



# NNE\_Boggess\_5H– Job Summary

**25<sup>th</sup> May 2019**

Prepared by:  
**Dmitry Avdeev**

DRILLING  
OPERATIONS

DRILLING  
SOLUTIONS

DRILLING  
EQUIPMENT

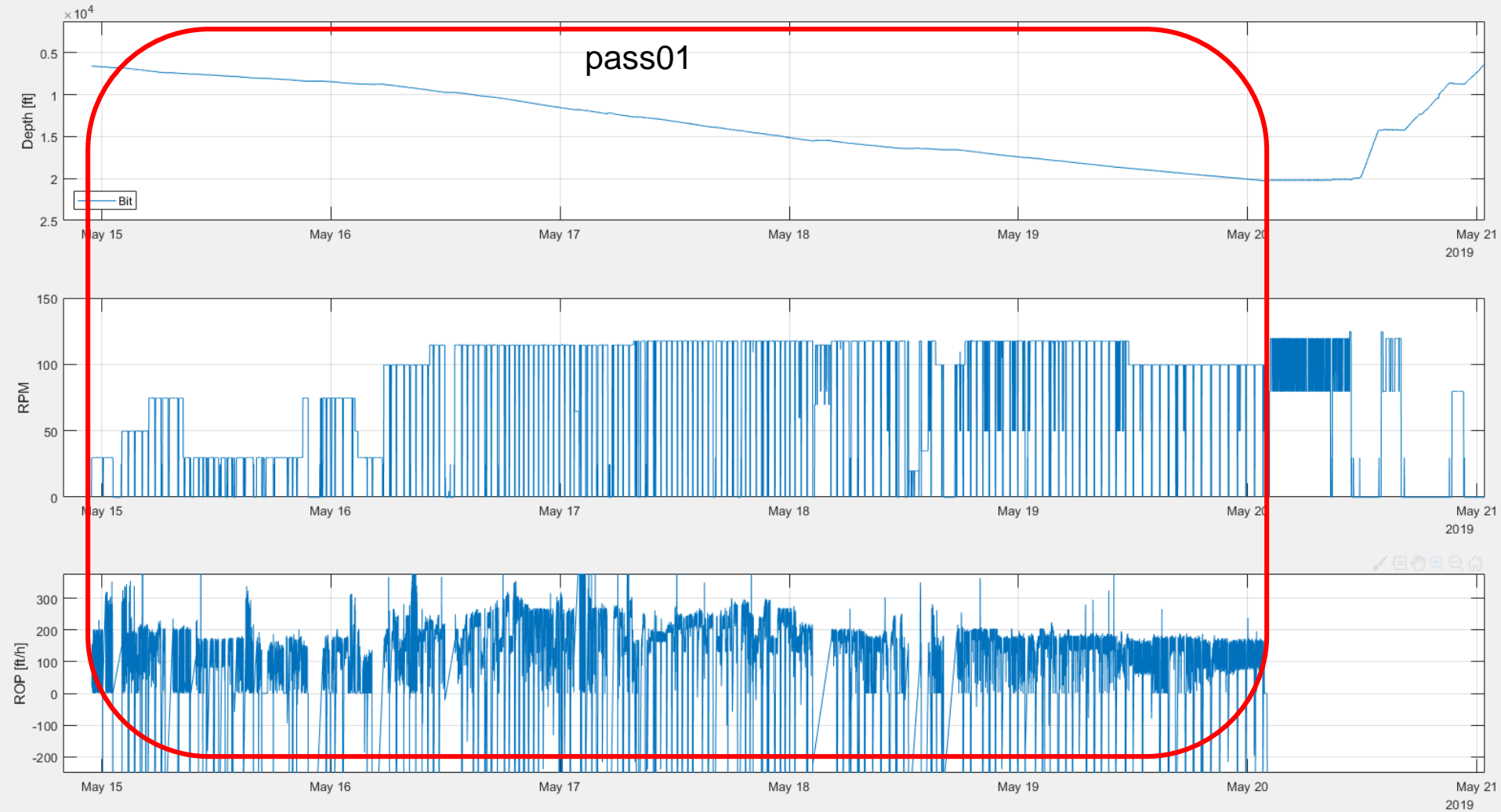
 **PetroMar**  
A NABORS COMPANY

# NNE\_Boggess\_5H– Job Summary. Outline.

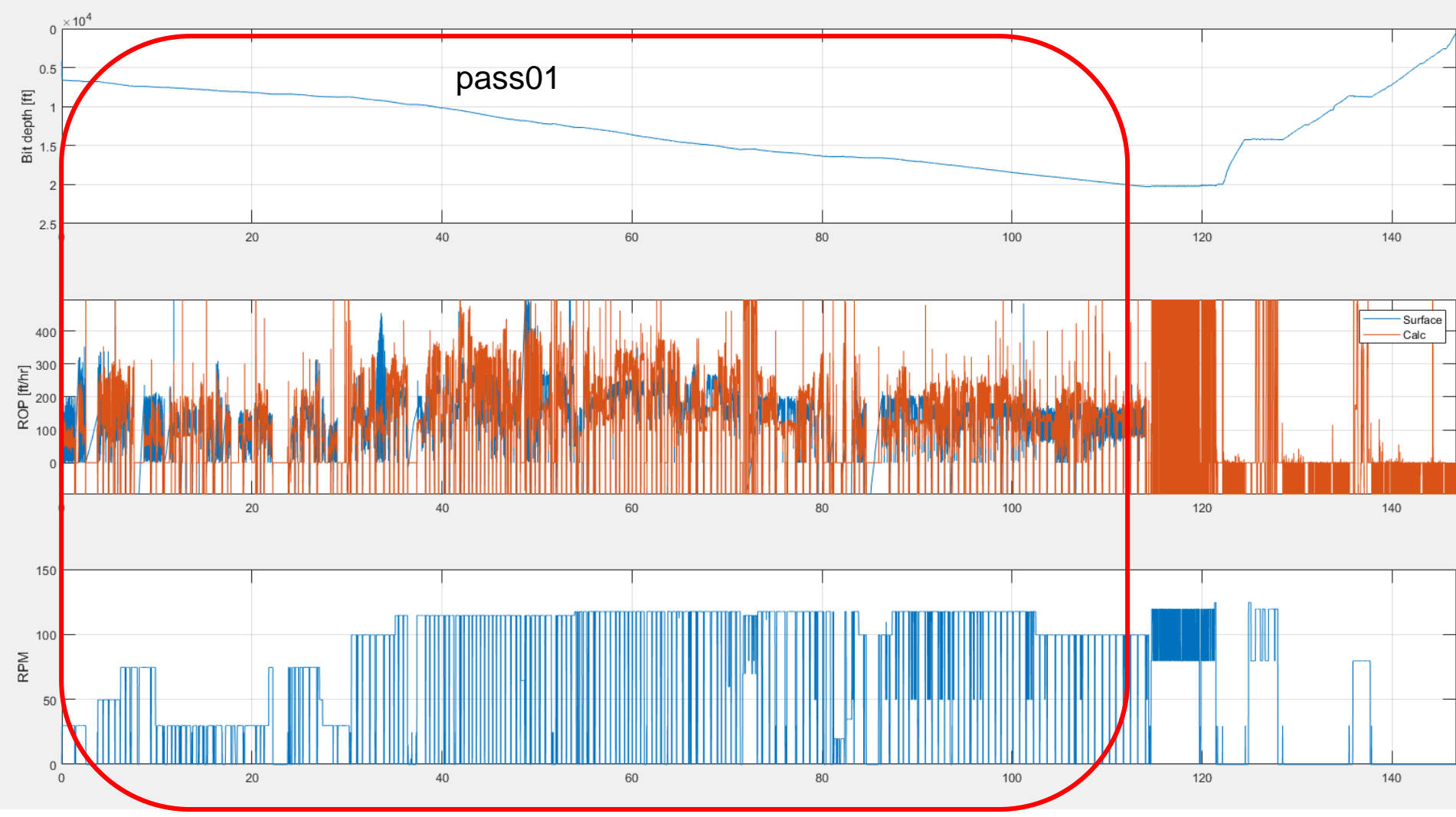


- **Section 01**
  - **Pass01 (drill)**

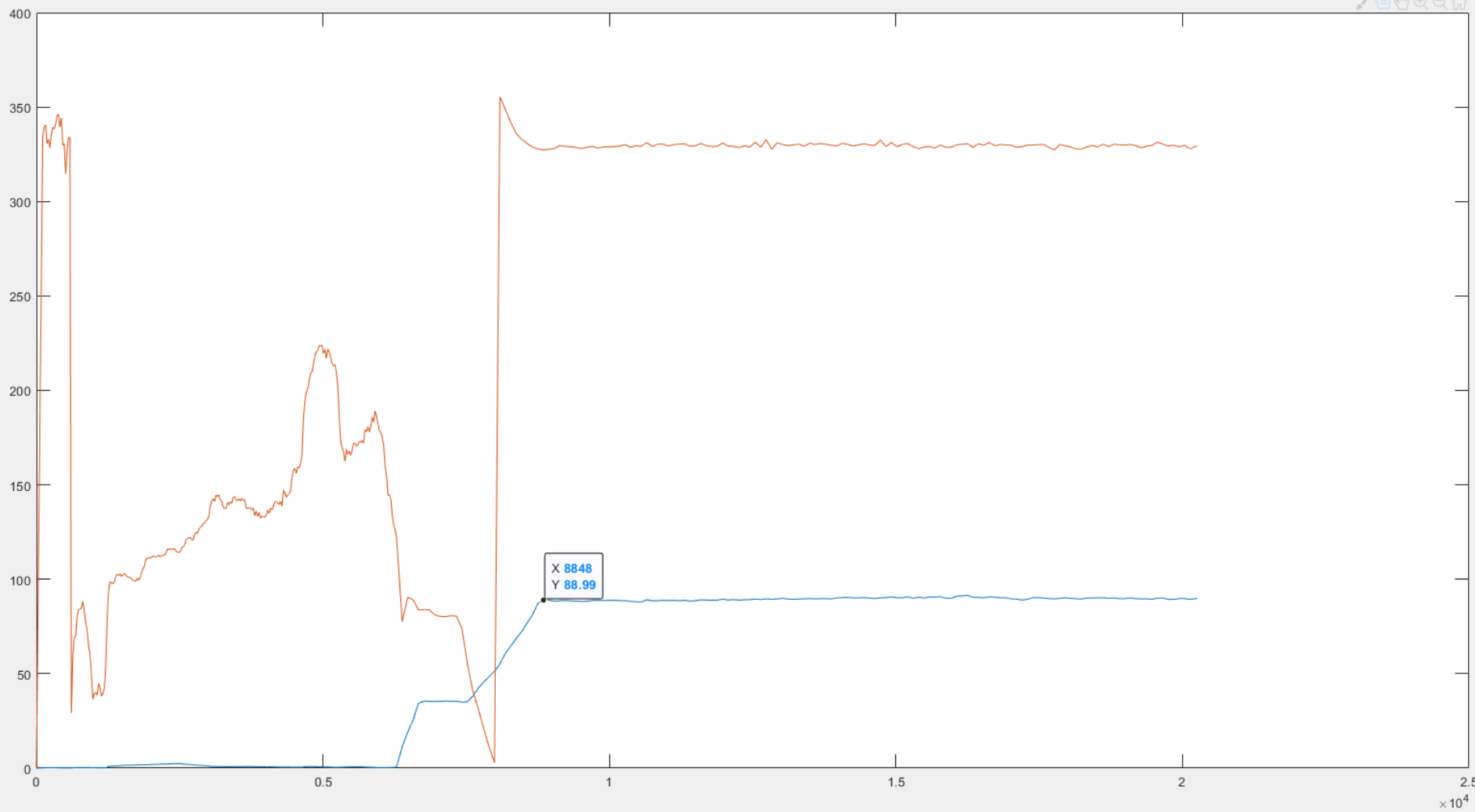
# NNE\_Boggess\_5H- Job Summary. Section01. Pass01.



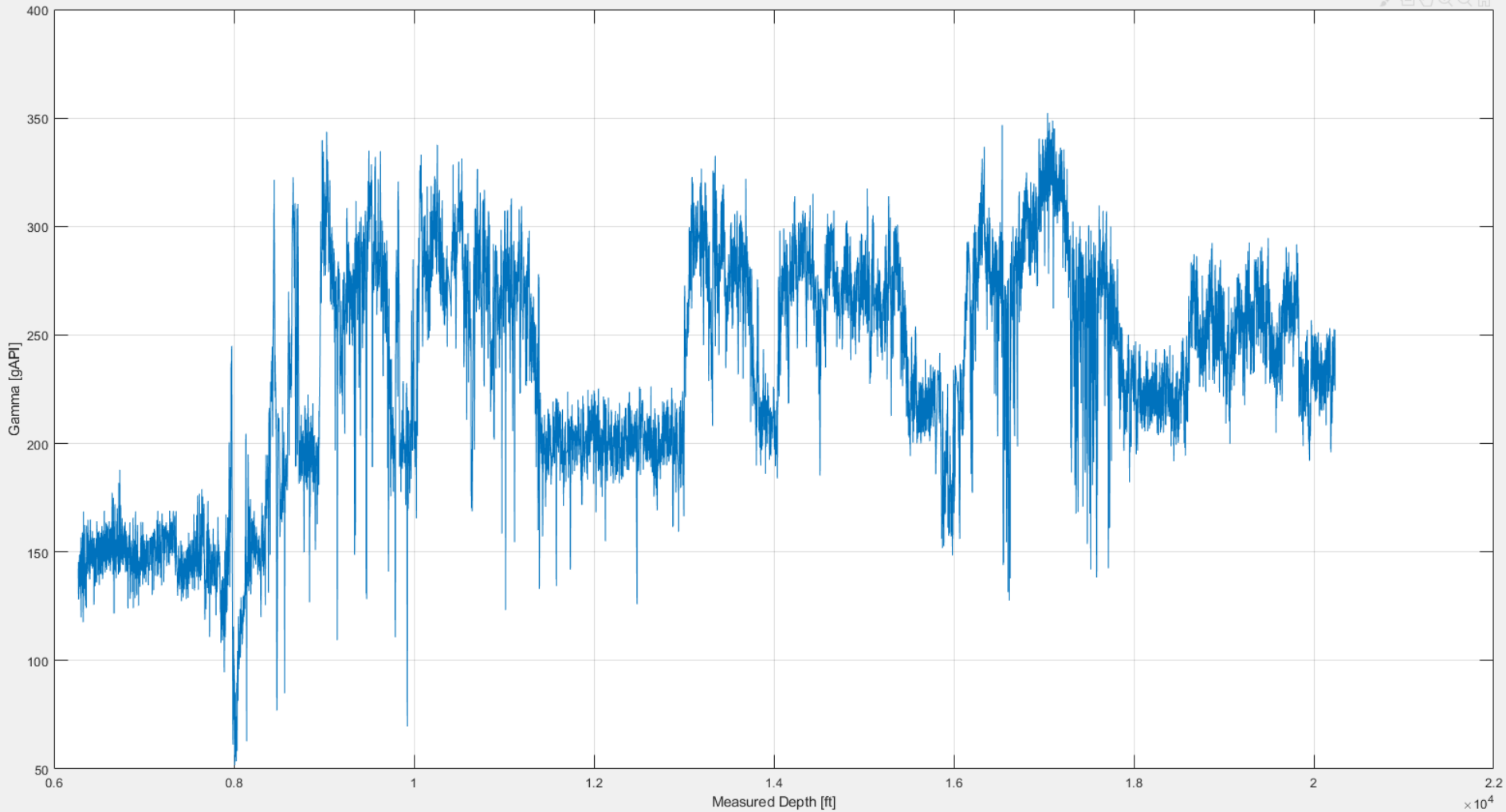
# NE\_Bogges\_5H- Job Summary. Section01. Pass01. RPM etc.



# NNE\_Bogges\_5H– Job Summary. Section01. Inclination & Azimuth.



# NNE\_Bogges\_5H– Job Summary. Section01. Gamma API.



# NNE\_Bogges\_5H– Job Summary.

## Section 01. Pass01 (drill)

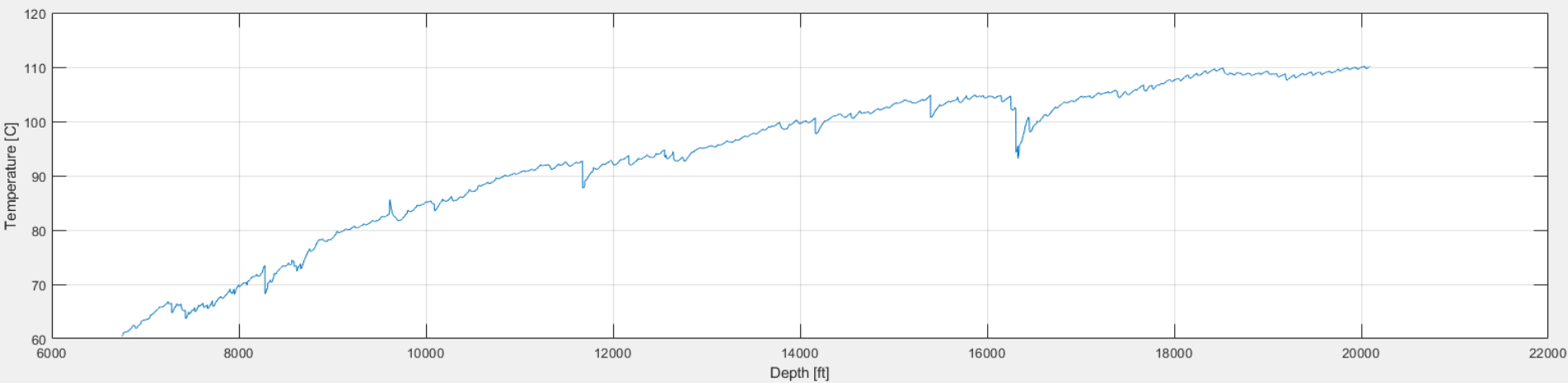
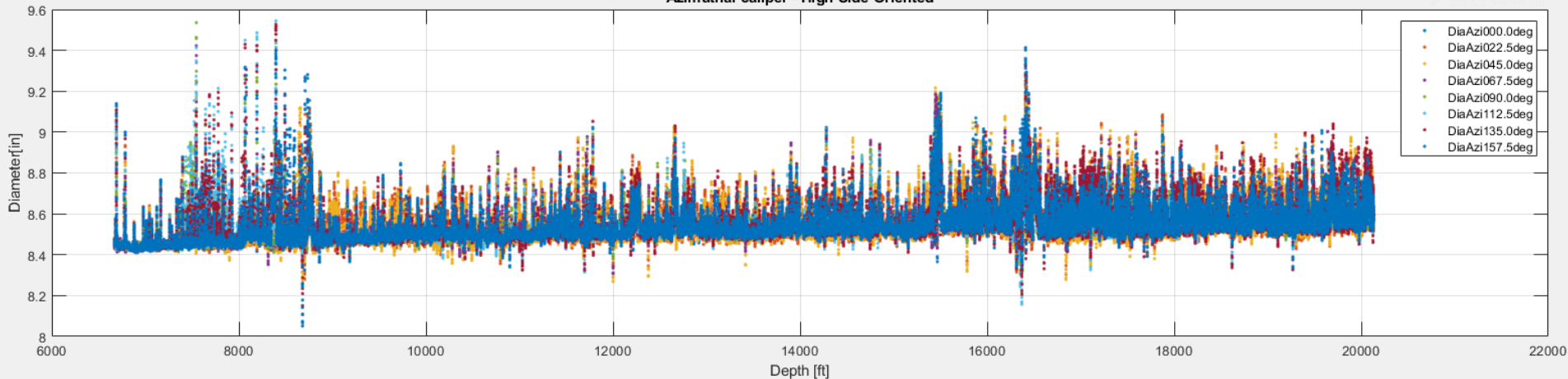


- **FV Sensor at 6,669 to 20,135 ft**
- **FV Sensor to Bit Distance ~ 122 ft**
- **Some Stick-Slip**

# NNE\_Bogges\_5H- Job Summary. Section01. Pass01. Azimuthal Calipers.

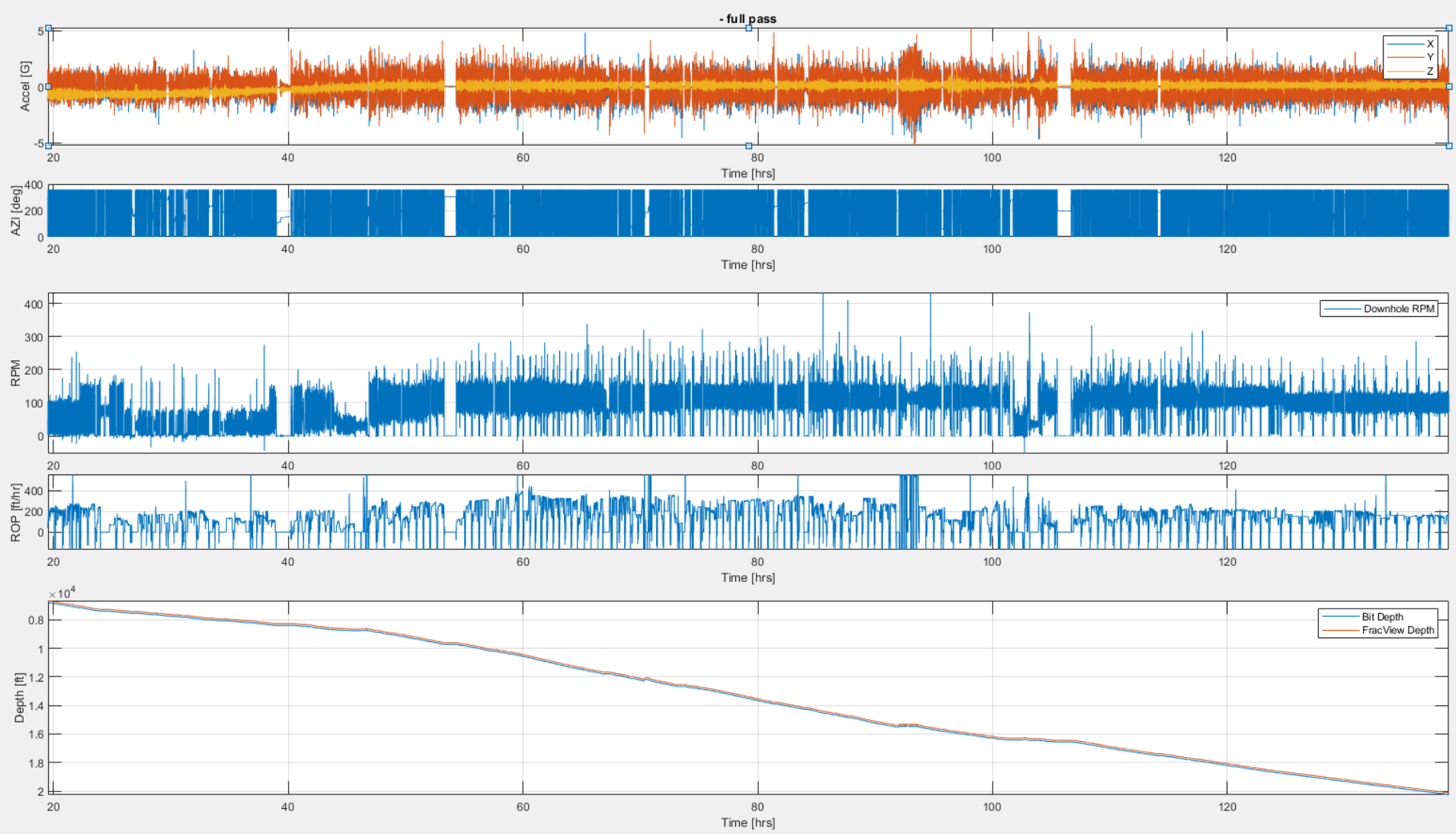


Azimuthal caliper - High Side Oriented



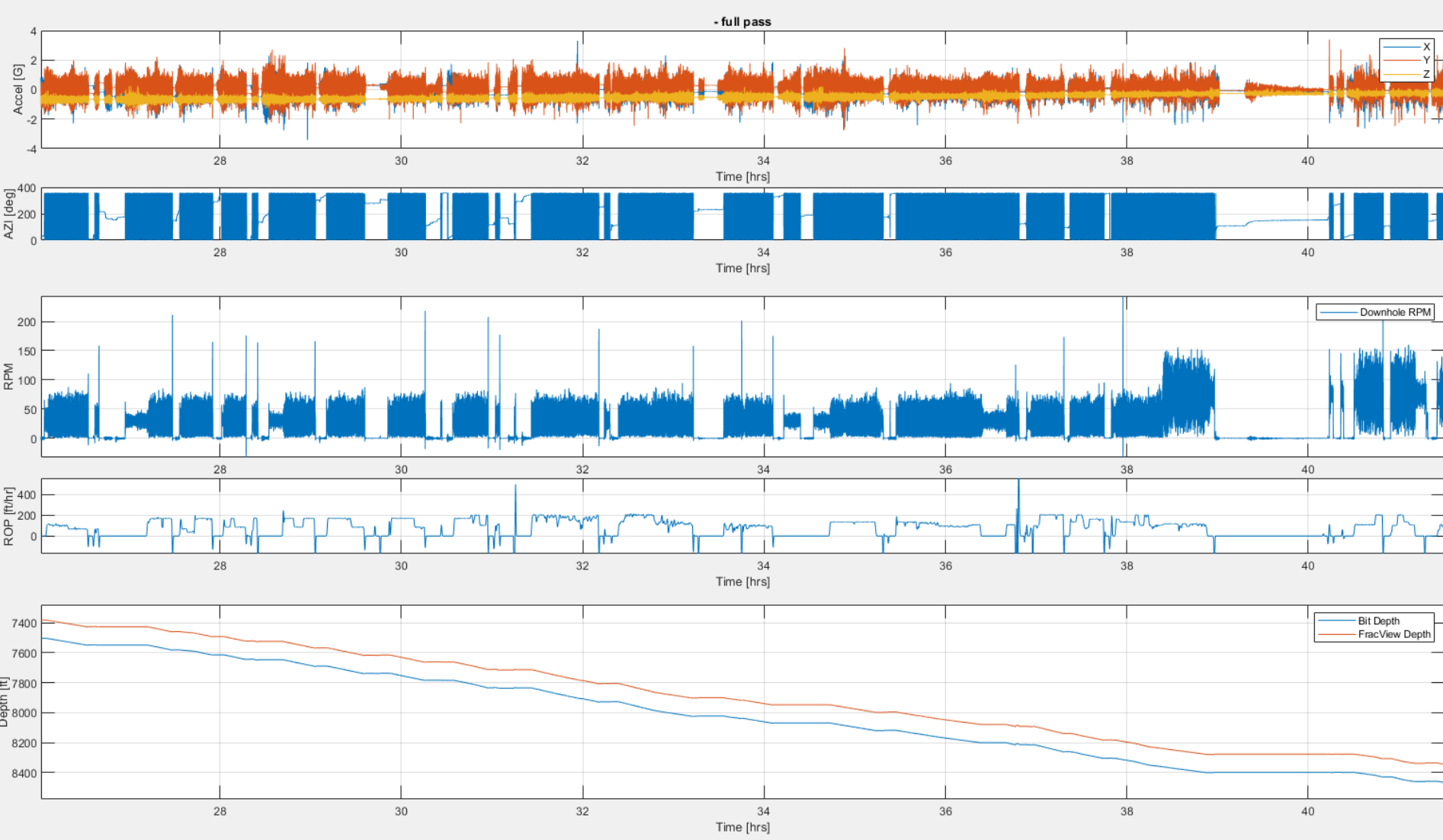


# NE\_Bogges\_5H- Job Summary. Section01. Pass01. Motion Dynamics.



# NNE\_Bogges\_5H- Job Summary.

## Section01. Pass01. Motion Dynamics (Stick Slip zoom)

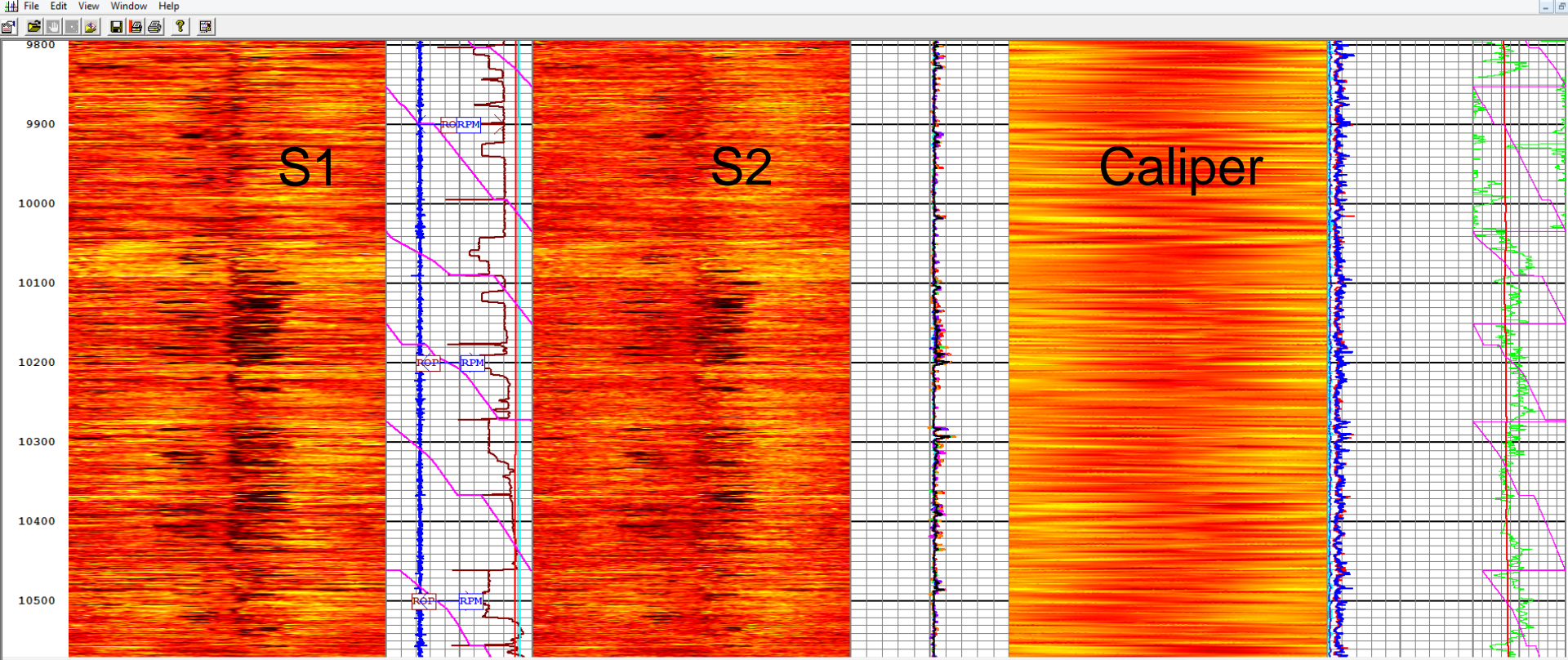


# NE\_Bogges\_5H- Job Summary.

## Section01. Pass01. BHC HS S1 VS S2



Bogges 5H\_Section01\_Pass01\_6669-20135ft\_FracView\_AmpMerg\_DB\_HS\_BHC\_S12\_LIN.dlls - Schlumberger DataView - [Bogges using FV\_2AMP\_Caliper\_RPMROP\_Azimuth]



0.000	0.009	0.019	0.029	0.039	0.049	0.059	0.069	0.079	0.089	0.099	0.109	0.119	0.129	0.139	0.149	0.159	0.169	0.179	0.189	0.199	0.209	0.219	0.229	0.239	0.249	0.259	0.269	0.279	0.289	0.299	0.309	0.319	0.329	0.339	0.349	0.359	0.369	0.379	0.389	0.399	0.409	0.419	0.429	0.439	0.449	0.459	0.469	0.479	0.489	0.499	0.509	0.519	0.529	0.539	0.549	0.559	0.569	0.579	0.589	0.599	0.609	0.619	0.629	0.639	0.649	0.659	0.669	0.679	0.689	0.699	0.709	0.719	0.729	0.739	0.749	0.759	0.769	0.779	0.789	0.799	0.809	0.819	0.829	0.839	0.849	0.859	0.869	0.879	0.889	0.899	0.909	0.919	0.929	0.939	0.949	0.959	0.969	0.979	0.989	0.999	1.000
ROP (ROP)		-500	ft/hr	500																																																																																																	
RPM_Filtered (RPM)		0	rpm	500																																																																																																	
Hole Deviation (DEVI)		0	deg	100																																																																																																	
Hole Azimuth (HAZI)																																																																																																					

0.000	0.009	0.019	0.029	0.039	0.049	0.059	0.069	0.079	0.089	0.099	0.109	0.119	0.129	0.139	0.149	0.159	0.169	0.179	0.189	0.199	0.209	0.219	0.229	0.239	0.249	0.259	0.269	0.279	0.289	0.299	0.309	0.319	0.329	0.339	0.349	0.359	0.369	0.379	0.389	0.399	0.409	0.419	0.429	0.439	0.449	0.459	0.469	0.479	0.489	0.499	0.509	0.519	0.529	0.539	0.549	0.559	0.569	0.579	0.589	0.599	0.609	0.619	0.629	0.639	0.649	0.659	0.669	0.679	0.689	0.699	0.709	0.719	0.729	0.739	0.749	0.759	0.769	0.779	0.789	0.799	0.809	0.819	0.829	0.839	0.849	0.859	0.869	0.879	0.889	0.899	0.909	0.919	0.929	0.939	0.949	0.959	0.969	0.979	0.989	0.999	1.000
ROP (ROP)		-500	ft/hr	500																																																																																																	
RPM_Filtered (RPM)		0	rpm	500																																																																																																	
Hole Deviation (DEVI)		0	deg	100																																																																																																	
Hole Azimuth (HAZI)																																																																																																					

BH Diameter 0deg (CalAzi1)		6.8	in	10
BH Diameter 22.5deg (CalAzi2)		6.8	in	10
BH Diameter 45deg (CalAzi3)				

FV S1 HS Caliper Image (Radius) (CalMrgS1)				
--	--	--	--	--

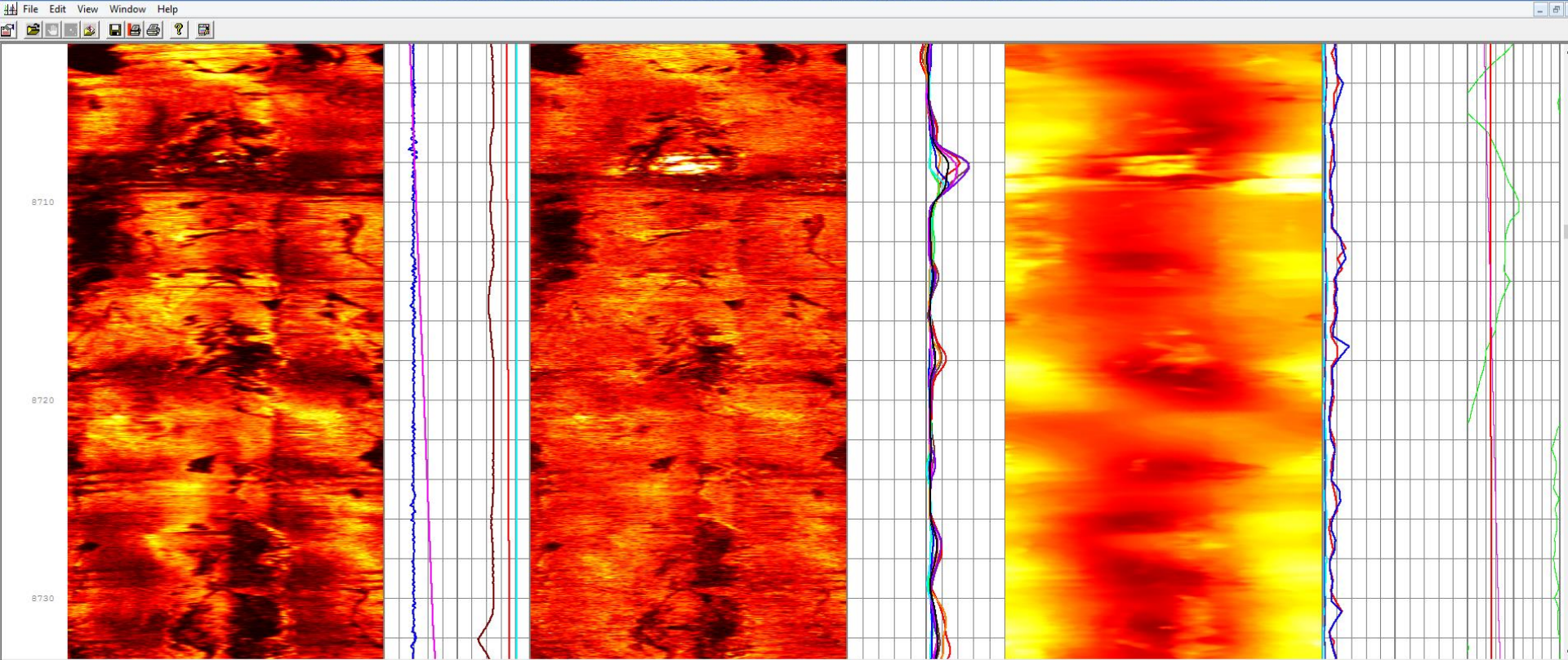
Shock X Accel (SHOCKX)		0	g	25
Shock Y Accel (SHOCKY)		0	g	25
Shock Z Accel (SHOCKZ)		0	g	25
RMS X Accel (VIBRX)				
GAMMA RAY API (GR)		0	API	200
Tool Temperature (TEMPC)		50	C	150
Exposure Time				

# NEE\_Bogges\_5H- Job Summary.

## Section01. Pass01. BHC HS S1 VS S2



Bogges 5H\_Section01\_Pass01\_6669-20135ft\_FracView\_AmplMerg\_DB\_HS\_BHC\_S12\_LIN.dlis - Schlumberger DataView - [Bogges using FV\_2AMP\_Caliper\_RPMROP\_Azimuth]



0.000	0.009	0.019	0.028	0.036	0.044	0.052	0.060	0.068	0.076	0.084	0.092	0.100	1.000
FV S1 HS BHC Merged Tx12 (AmpMrgS1)													
()													

ROP (ROP)	
-500	500
ft/hr	
RPM_Filtered (RPM)	
0	500
rpm	
Hole Deviation (DEVI)	
0	100
deg	
Hole Azimuth (HAZI)	

0.000	0.009	0.019	0.028	0.036	0.044	0.052	0.060	0.068	0.076	0.084	0.092	0.100	1.000
FV S2 HS BHC Merged Tx12 (AmpMrgS2)													
()													

BH Diameter 0deg (CalAzi1)	
6.8	10
in	
BH Diameter 22.5deg (CalAzi2)	
6.8	10
in	
BH Diameter 45deg (CalAzi3)	

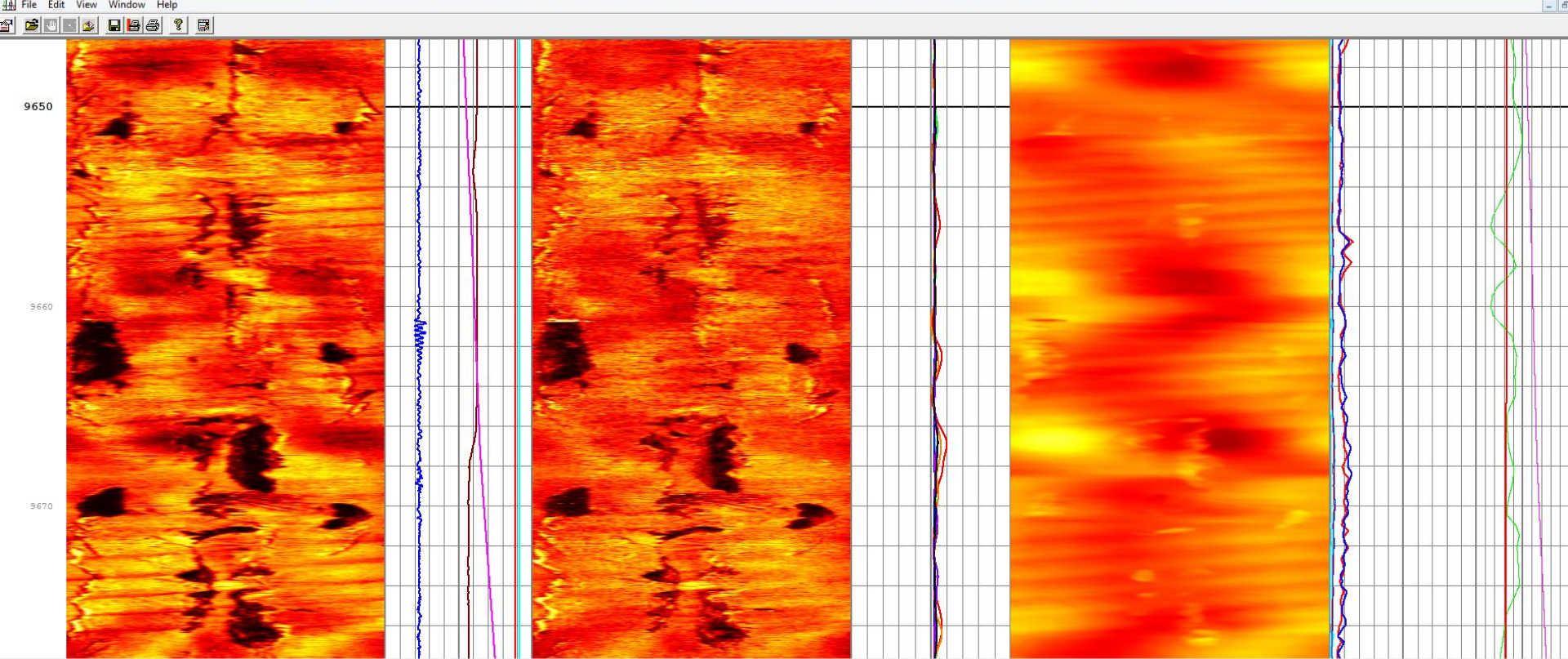
3.900	3.862	3.825	3.787	3.750	3.712	3.675	3.637	3.600	3.562	3.525	3.487	3.450	3.412	3.375	3.337	3.300	3.262	3.225	3.187	3.150	3.112	3.075	3.037	3.000	2.962	2.925	2.887	2.850	2.812	2.775	2.737	2.700	2.662	2.625	2.587	2.550	2.512	2.475	2.437	2.400	2.362	2.325	2.287	2.250	2.212	2.175	2.137	2.100	2.062	2.025	1.987	1.950	1.912	1.875	1.837	1.800	1.762	1.725	1.687	1.650	1.612	1.575	1.537	1.500	1.462	1.425	1.387	1.350	1.312	1.275	1.237	1.200	1.162	1.125	1.087	1.050	1.012	0.975	0.937	0.900	0.862	0.825	0.787	0.750	0.712	0.675	0.637	0.600	0.562	0.525	0.487	0.450	0.412	0.375	0.337	0.300	0.262	0.225	0.187	0.150	0.112	0.075	0.037	0.000	1.000
FV S1 HS Caliper Image (Radius) (CalMrgS1)																																																																																																									
()																																																																																																									

Shock X Accel (SHOCKX)		GAMMA RAY API (GR)	
0	g	25	0
Shock Y Accel (SHOCKY)		API 200	
0	g	25	
Shock Z Accel (SHOCKZ)		Tool Temperature (TEMPC)	
0	g	25	50 C 150
RMS X Accel (VIBRX)		Exposure Time	

# NEE\_Bogges\_5H- Job Summary. Section01. Pass01. BHC HS S1 VS S2



Bogges 5H\_Section01\_Pass01\_6669-20135ft\_FracView\_AmpMerg\_DB\_HS\_BHC\_S12\_LIN.dllis - Schlumberger DataView - [Bogges using FV\_2AMP\_Caliper\_RPMROP\_Azimuth]



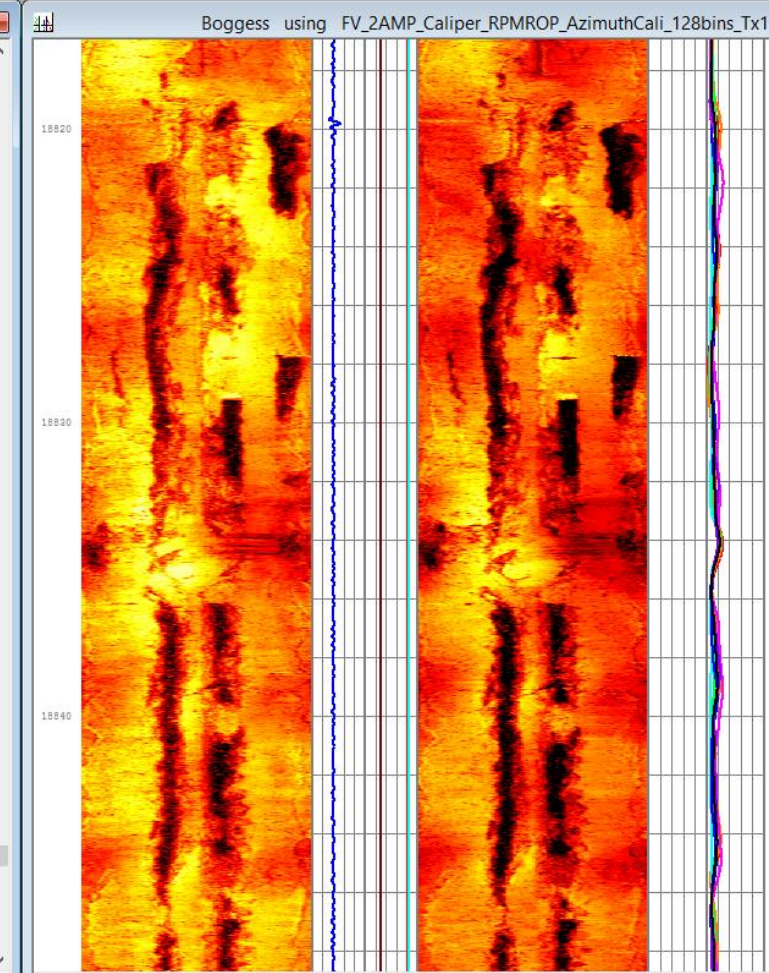
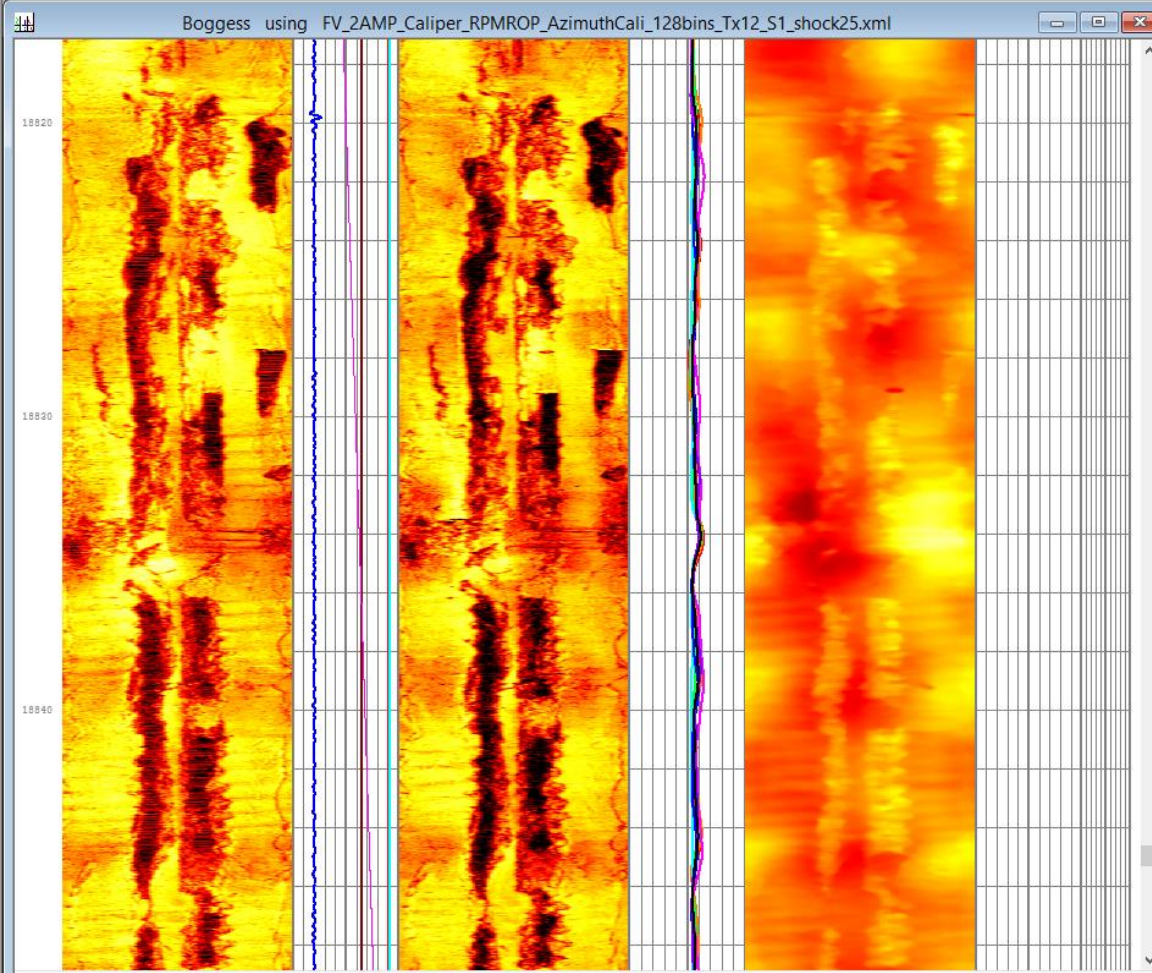
<p>0.009 0.019 0.017 0.156 0.236 0.273 0.32 0.391 0.469 0.529 0.596 0.665 0.703 0.781 0.829 0.886 1.000</p> <p>FV S1 HS BHC Merged Tx12 (AmpMrgS1) ()</p>	<p><b>ROP (ROP)</b> -500 ft/hr 500</p> <p><b>RPM_Filtered (RPM)</b> 0 rpm 500</p> <p><b>Hole Deviation (DEVI)</b> 0 deg 100</p> <p><b>Hole Azimuth (HAZI)</b></p>	<p>0.009 0.019 0.117 0.186 0.234 0.313 0.340 0.480 0.569 0.606 0.647 0.684 0.742 0.791 0.859 0.886 1.000</p> <p>FV S2 HS BHC Merged Tx12 (AmpMrgS2) ()</p>	<p><b>BH Diameter 0deg (CalAzi1)</b> 6.8 in 10</p> <p><b>BH Diameter 22.5deg (CalAzi2)</b> 6.8 in 10</p> <p><b>BH Diameter 45deg (CalAzi3)</b></p>	<p>3.940 3.626 3.959 3.712 3.000 4.026 4.106 4.213 4.339 4.400 4.698 4.713 4.768 0.000</p> <p>FV S1 HS Caliper Image (Radius) (CalMrgS1) ()</p>	<p><b>Shock X Accel (SHOCKX)</b> 0 g 25</p> <p><b>Shock Y Accel (SHOCKY)</b> 0 g 25</p> <p><b>Shock Z Accel (SHOCKZ)</b> 0 g 25</p> <p><b>RMS X Accel (VIBRX)</b></p>	<p><b>GAMMA RAY API (GR)</b> 0 API 200</p> <p><b>Tool Temperature (TEMPC)</b> 50 C 150</p> <p><b>Exposure Time</b></p>
---	---	--	--	---	---	--

# NNE\_Bogges\_5H- Job Summary. Section01. Pass01. NC HS S1 VS S2



Bogges 5H\_Section01\_Pass01\_6669-20135ft\_FracView\_Amp\_DB\_HS\_NC\_TX12\_S1\_LOG.dlis - Schlumberger DataView

File Edit View Window Help



FV S1 HS NC Tx1 (AmpTx1S1) ()	ROP (ROP) -500 500 ft/hr	FV S1 HS NC Tx2 (AmpTx2S1) ()	BH Diameter 6.8 in 10	FV S1 HS Caliper Image (Radius) (CalMrgS1) () 18,820-18,850
	RPM_Filtered (RPM)		BH Diameter 22.5deg (CalAzi2)	

FV S2 HS NC Tx1 (AmpTx1S2) ()	ROP (ROP) -500 500 ft/hr	FV S2 HS NC Tx2 (AmpTx2S2) ()	BH Diameter 6.8 in 10
	RPM_Filtered (RPM)		BH Diameter 22.5deg (CalAzi2)



**Thank You**