

Field: Boggess-3H
 Operator: NorthEast Natural Energy
 Block: USA
 Country: USA

Country: USA
 Operator: NNE
 Well: Boggess-3H
 Location: Permanent Datum
 TD Coffer: MD
 Drilling Measured From: ft

Other Services:
 Elevation: NONE
 KB: ft

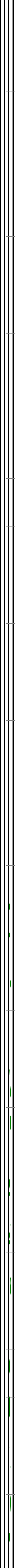
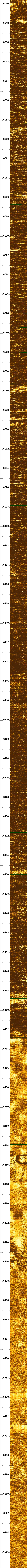
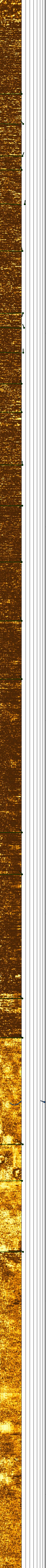
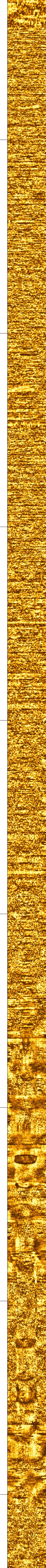
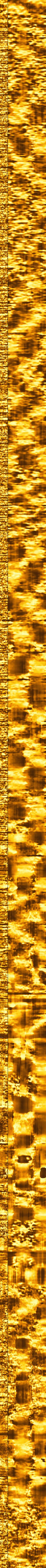
TD: 6045.15 ft
 Top Log Int: 21167.0 ft
 Base Log Int: 6045.15 ft
 Top Proc Int: 6045.15 ft
 Base Proc Int: 6045.15 ft

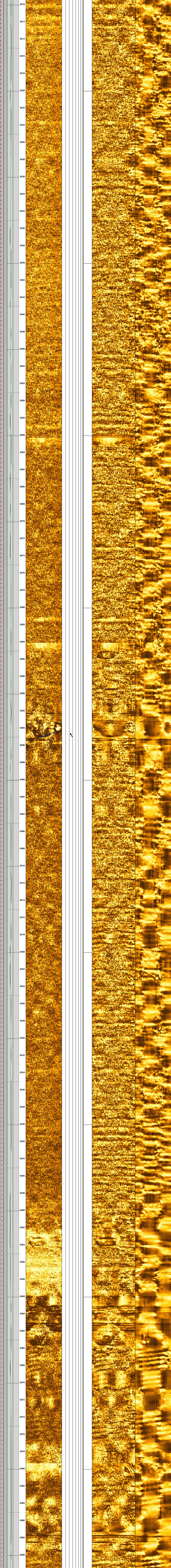
Bit Size: 8.500 in
 WUO VTI: 0 degF
 RMF & Temp: ohmm
 RMF & Temp: degF
 RMF & Temp: ohmm
 RMF & Temp: degF

DLT State: 100.00 us/f
 RHOB Shale: 2.40 g/ccs
 PHIN Shale: 30.00 pu
 GR Sl/Matrix: GAPI

BHT: degF
 BHTM Stability: ppm
 RV & Temp: ohmm
 RV & Temp: degF
 M and N: 2.00
 Analysis Loc: 2.00

Analysis By:





6210
6212
6214
6216
6218
6220
6222
6224
6226
6228
6230
6232
6234
6236
6238
6240
6242
6244
6246
6248
6250
6252
6254
6256
6258
6260
6262
6264
6266
6268
6270
6272
6274
6276
6278
6280
6282
6284
6286
6288
6290
6292
6294
6296
6298
6300
6302
6304
6306
6308
6310
6312
6314
6316
6318
6320
6322
6324
6326
6328
6330
6332
6334
6336
6338
6340
6342
6344
6346
6348
6350
6352
6354
6356
6358
6360
6362
6364
6366
6368
6370
6372
6374
6376
6378
6380
6382
6384
6386
6388
6390

