

Field: Boggess-13H
 Operator: NorthEast Natural Energy
 Block: Country: USA
 Other Services:

Country: USA
 Operator: NNE
 Well: Boggess-13H
 Location: Permanent Datum
 TD Driller: MD
 Drilling Measured From: ft

TD: 5502.02 ft
 Top Log Int: 20327.7 ft
 Top Proc Int: Base Proc Int: Base Proc Int: Bit Size: 8.500 in
 MUD VTI: ohmm
 RMF & Temp: ohmm
 RMC & Temp: ohmm
 DLT Stale: 100.00 us/f
 RHOB Stale: 2.40 g/cc
 PHIN Stale: 30.00 pu
 GR St/Matrix: GAPI

BHT: degF
 BHTM Stability: ppm
 RV & Temp: ohmm
 M and N: 2.00
 Analysis Loc: analysis by:

Country: USA
 Operator: NNE
 Well: Boggess-13H
 Location: Permanent Datum
 TD Driller: MD
 Drilling Measured From: ft

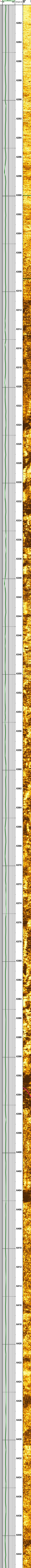
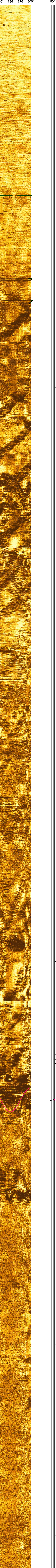
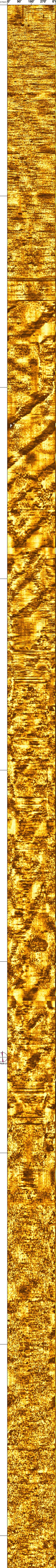
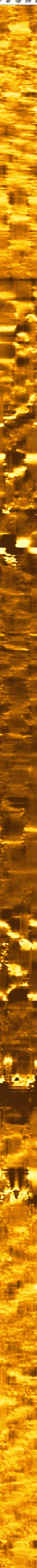
TD: 5502.02 ft
 Top Log Int: 20327.7 ft
 Top Proc Int: Base Proc Int: Base Proc Int: Bit Size: 8.500 in
 MUD VTI: ohmm
 RMF & Temp: ohmm
 RMC & Temp: ohmm
 DLT Stale: 100.00 us/f
 RHOB Stale: 2.40 g/cc
 PHIN Stale: 30.00 pu
 GR St/Matrix: GAPI

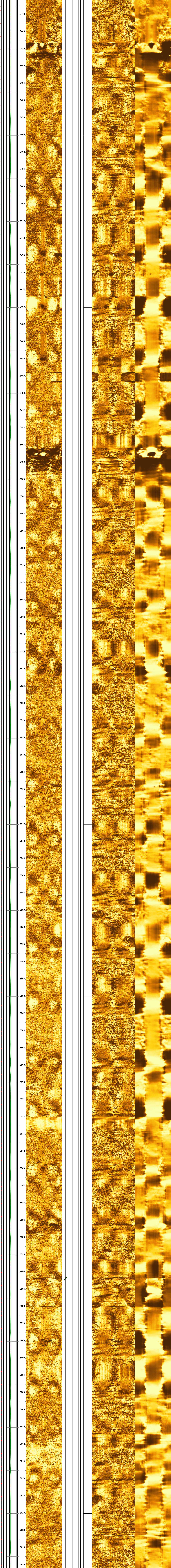
BHT: degF
 BHTM Stability: ppm
 RV & Temp: ohmm
 M and N: 2.00
 Analysis Loc: analysis by:

Country: USA
 Operator: NNE
 Well: Boggess-13H
 Location: Permanent Datum
 TD Driller: MD
 Drilling Measured From: ft

TD: 5502.02 ft
 Top Log Int: 20327.7 ft
 Top Proc Int: Base Proc Int: Base Proc Int: Bit Size: 8.500 in
 MUD VTI: ohmm
 RMF & Temp: ohmm
 RMC & Temp: ohmm
 DLT Stale: 100.00 us/f
 RHOB Stale: 2.40 g/cc
 PHIN Stale: 30.00 pu
 GR St/Matrix: GAPI

BHT: degF
 BHTM Stability: ppm
 RV & Temp: ohmm
 M and N: 2.00
 Analysis Loc: analysis by:





6446

6448

6450

6452

6454

6456

6458

6460

6462

6464

6466

6468

6470

6472

6474

6476

6478

6480

6482

6484

6486

6488

6490

6492

6494

6496

6498

6500

6502

6504

6506

6508

6510

6512

6514

6516

6518

6520

6522

6524

6526

6528

6530

6532

6534

6536

6538

6540

6542

6544

6546

6548

6550

6552

6554

6556

6558

6560

6562

6564

6566

6568

6570

6572

6574

6576

6578

6580

6582

6584

6586

6588

6590

6592

6594

6596

6598

6600

6602

6604

6606

6608

6610

6612

6614

6616

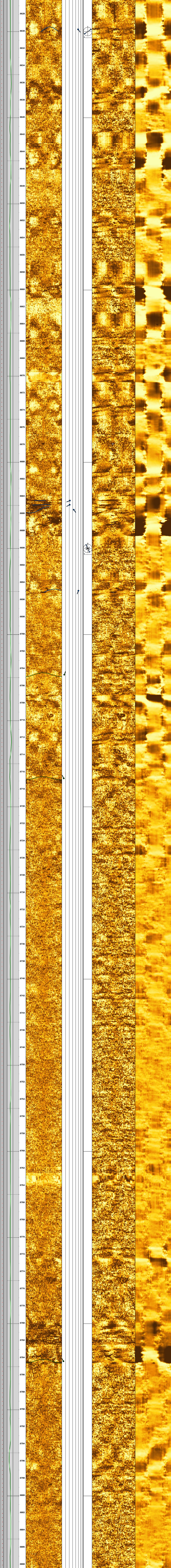
6618

6620

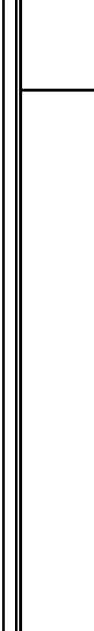
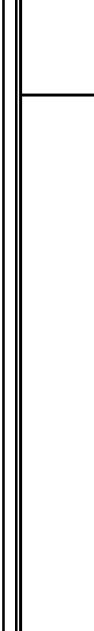
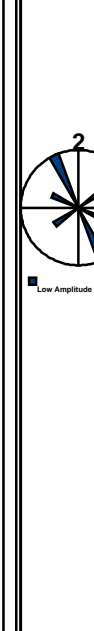
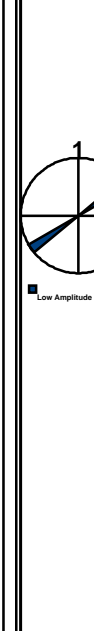
6622

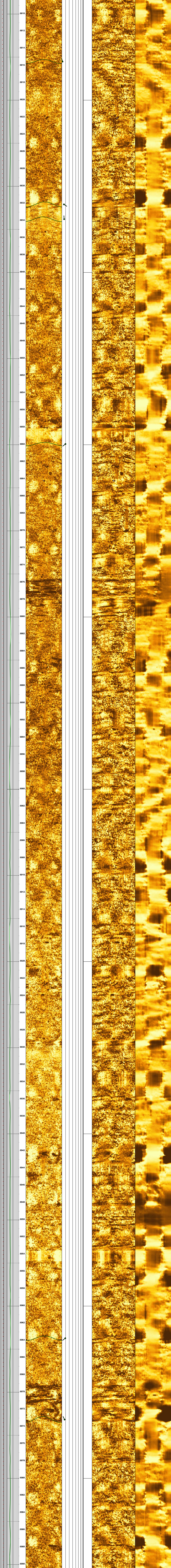
6624

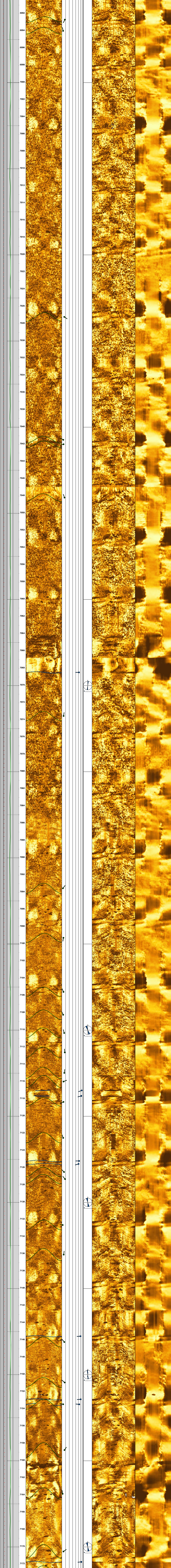
6626

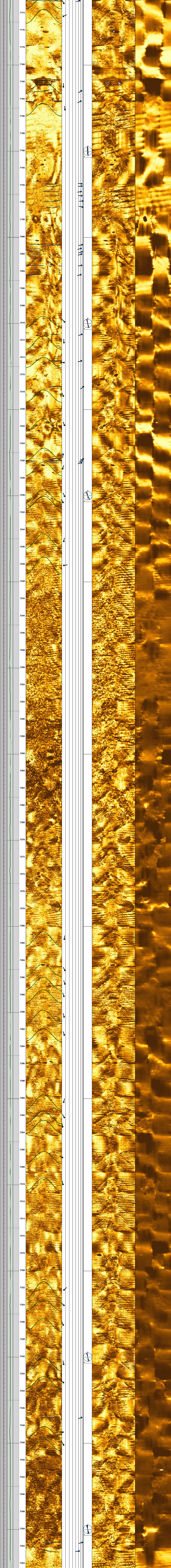


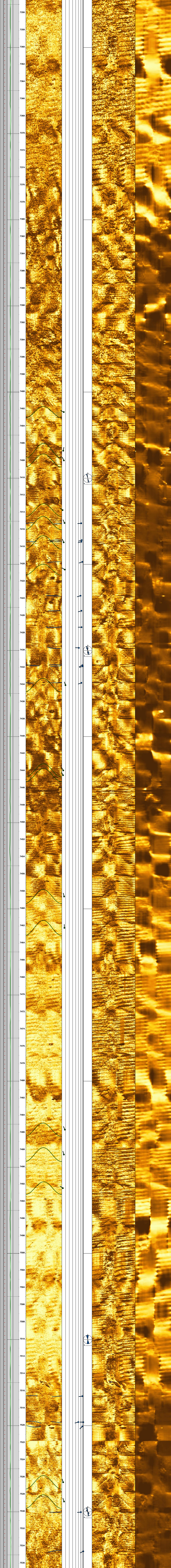
6628
6630
6632
6634
6636
6638
6640
6642
6644
6646
6648
6650
6652
6654
6656
6658
6660
6662
6664
6666
6668
6670
6672
6674
6676
6678
6680
6682
6684
6686
6688
6690
6692
6694
6696
6698
6700
6702
6704
6706
6708
6710
6712
6714
6716
6718
6720
6722
6724
6726
6728
6730
6732
6734
6736
6738
6740
6742
6744
6746
6748
6750
6752
6754
6756
6758
6760
6762
6764
6766
6768
6770
6772
6774
6776
6778
6780
6782
6784
6786
6788
6790
6792
6794
6796
6798
6800
6802
6804
6806
6808











7356

7358

7360

7362

7364

7366

7368

7370

7372

7374

7376

7378

7380

7382

7384

7386

7388

7390

7392

7394

7396

7398

7400

7402

7404

7406

7408

7410

7412

7414

7416

7418

7420

7422

7424

7426

7428

7430

7432

7434

7436

7438

7440

7442

7444

7446

7448

7450

7452

7454

7456

7458

7460

7462

7464

7466

7468

7470

7472

7474

7476

7478

7480

7482

7484

7486

7488

7490

7492

7494

7496

7498

7500

7502

7504

7506

7508

7510

7512

7514

7516

7518

7520

7522

7524

7526

7528

7530

7532

7534

7536

