

NNE_Bogges_13H–Job Summary Sections 01 & 02

18th June 2019

Prepared by:
Dmitry Avdeev

DRILLING
OPERATIONS

DRILLING
SOLUTIONS

DRILLING
EQUIPMENT

 **PetroMar**
A NABORS COMPANY

NNE_Boggess_13H– Job Summary. Outline. Sections & Passes



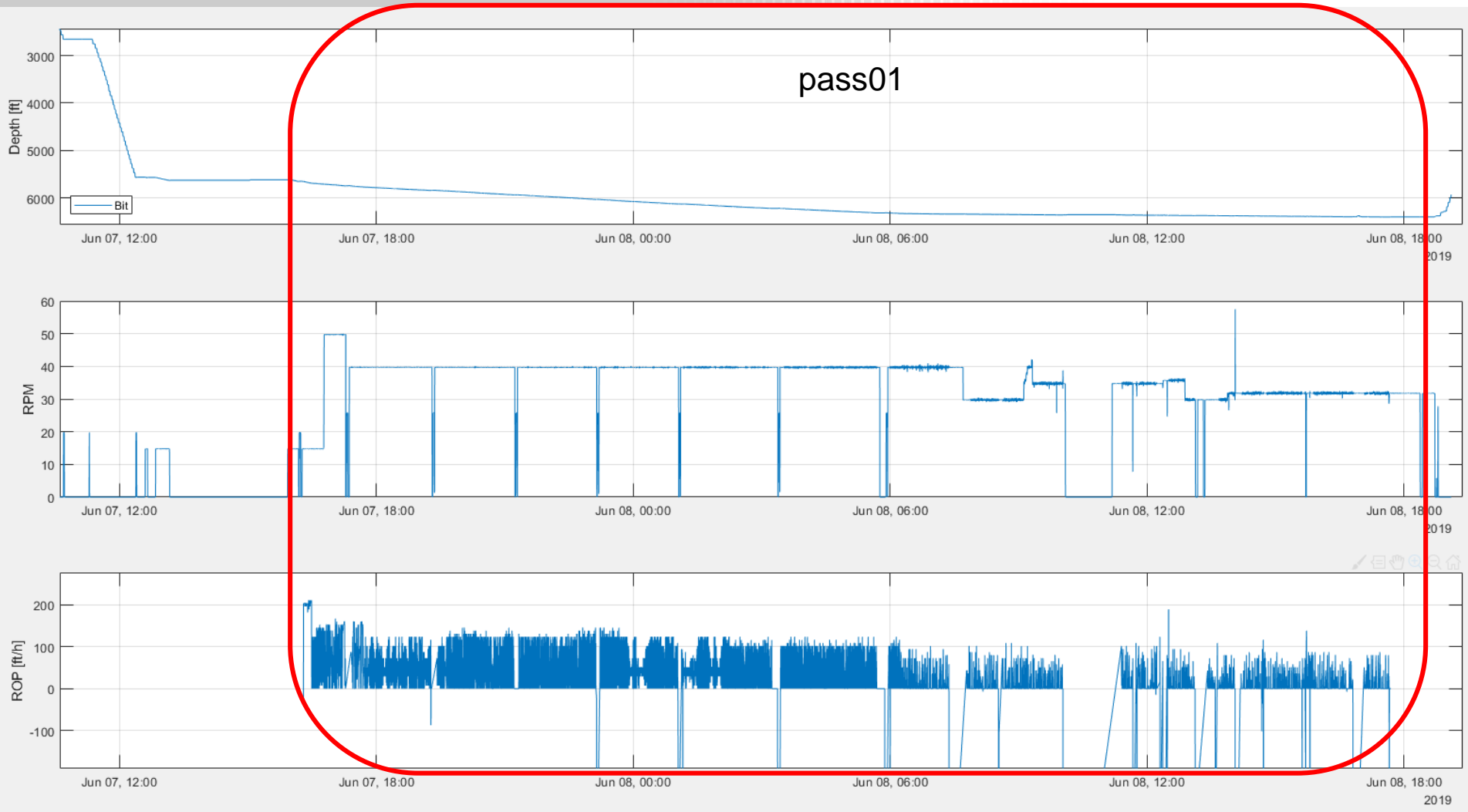
- **Section 01 (vertical)**
 - **Pass01 (drill)**
- **Section 02 (vertical, curve, lateral)**
 - **Pass01 (vertical+curve, drill)**
 - **Pass02 (lateral, drill)**

NNE_Boggess_13H– Job Summary. Section01.

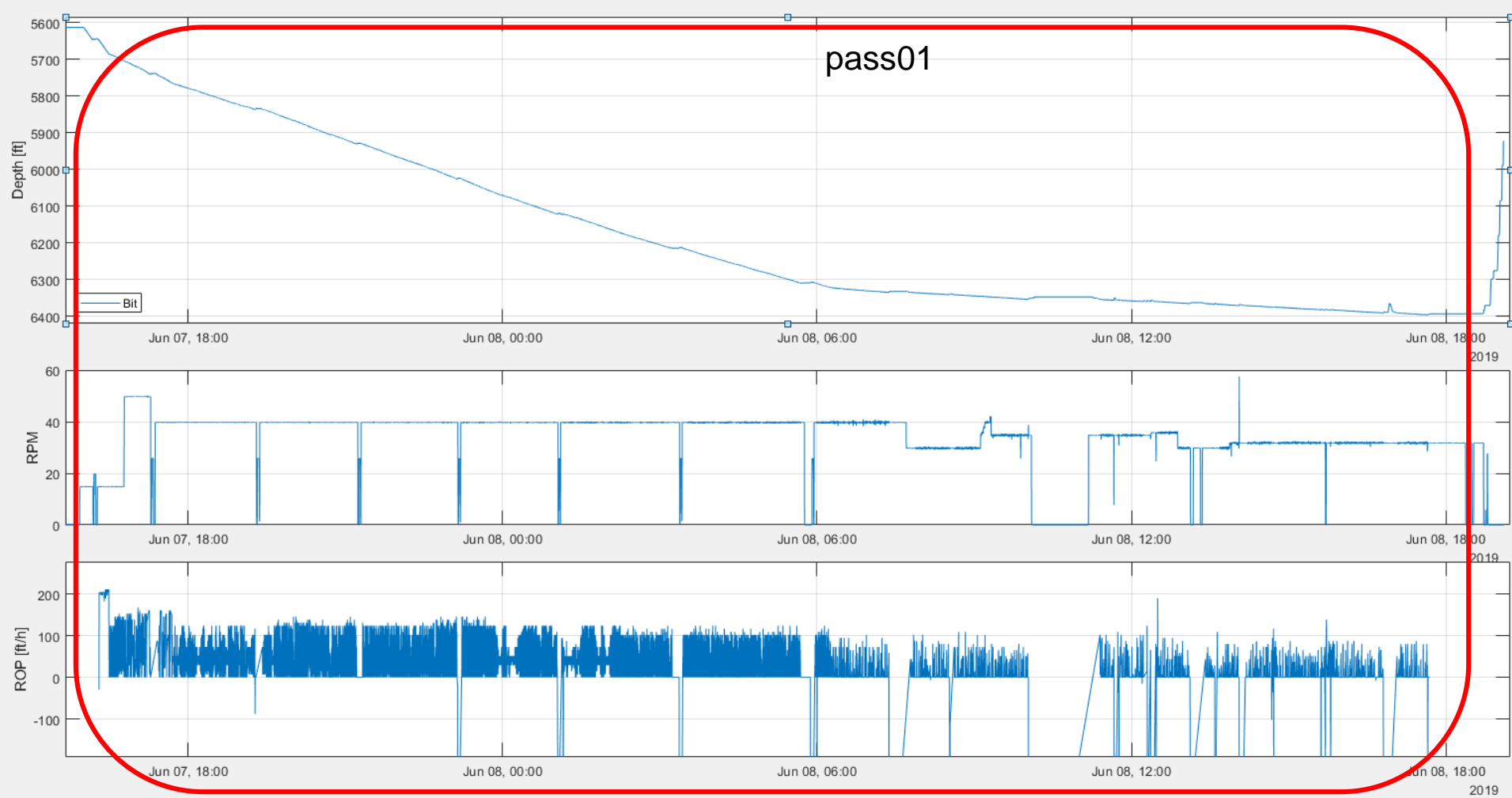


- **Section 01 (vertical)**
 - **Pass01 (drill)**

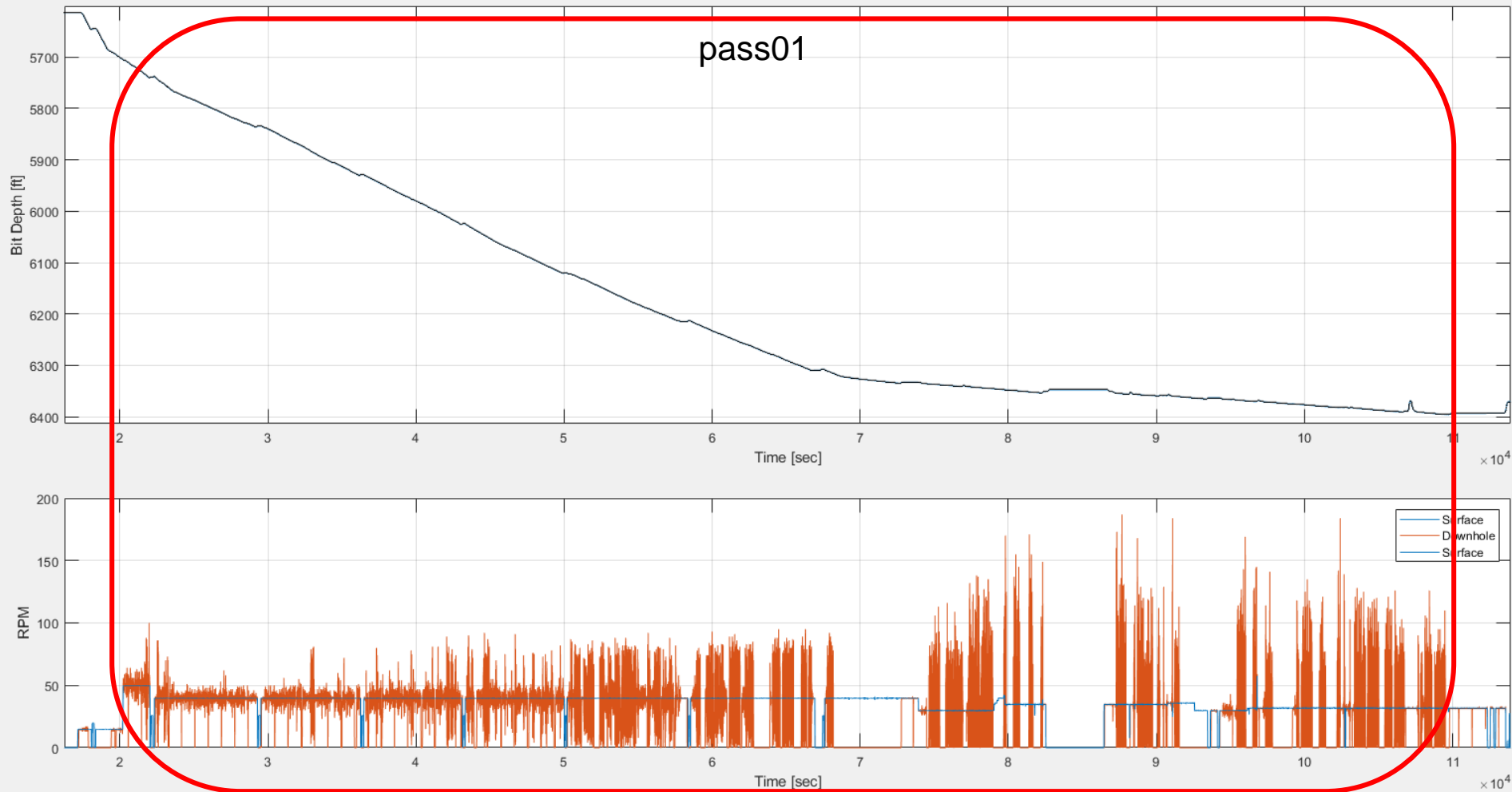
NNE_Boggess_13H– Job Summary. Section01. Pass01.



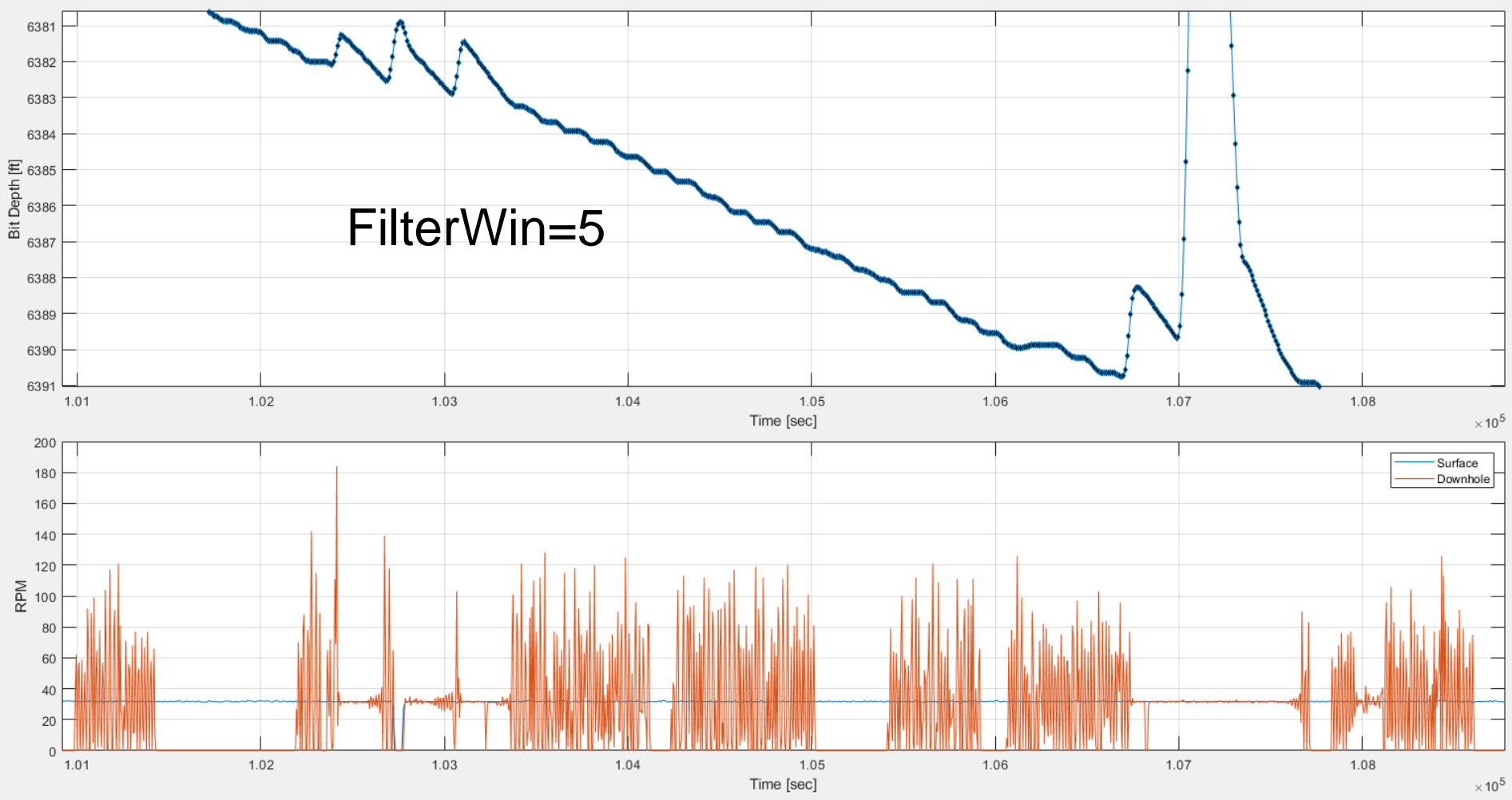
NNE_Boggess_13H– Job Summary. Section01. Pass01.



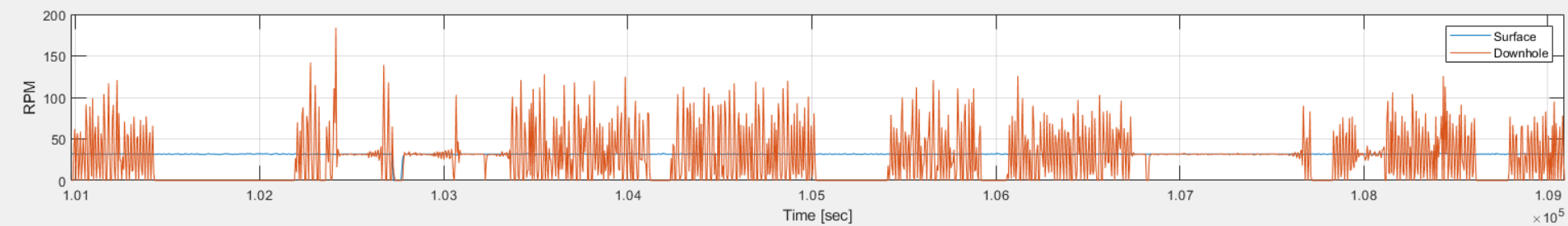
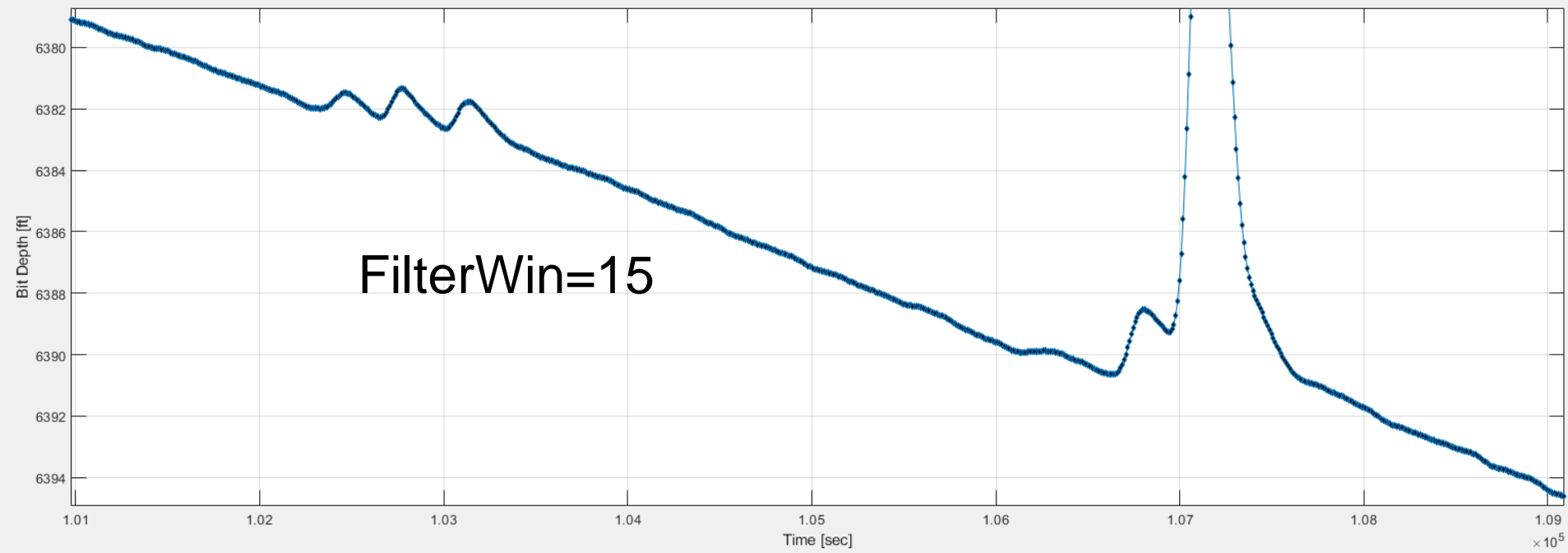
NNE_Bogges_13H– Job Summary. Section01. Pass01.



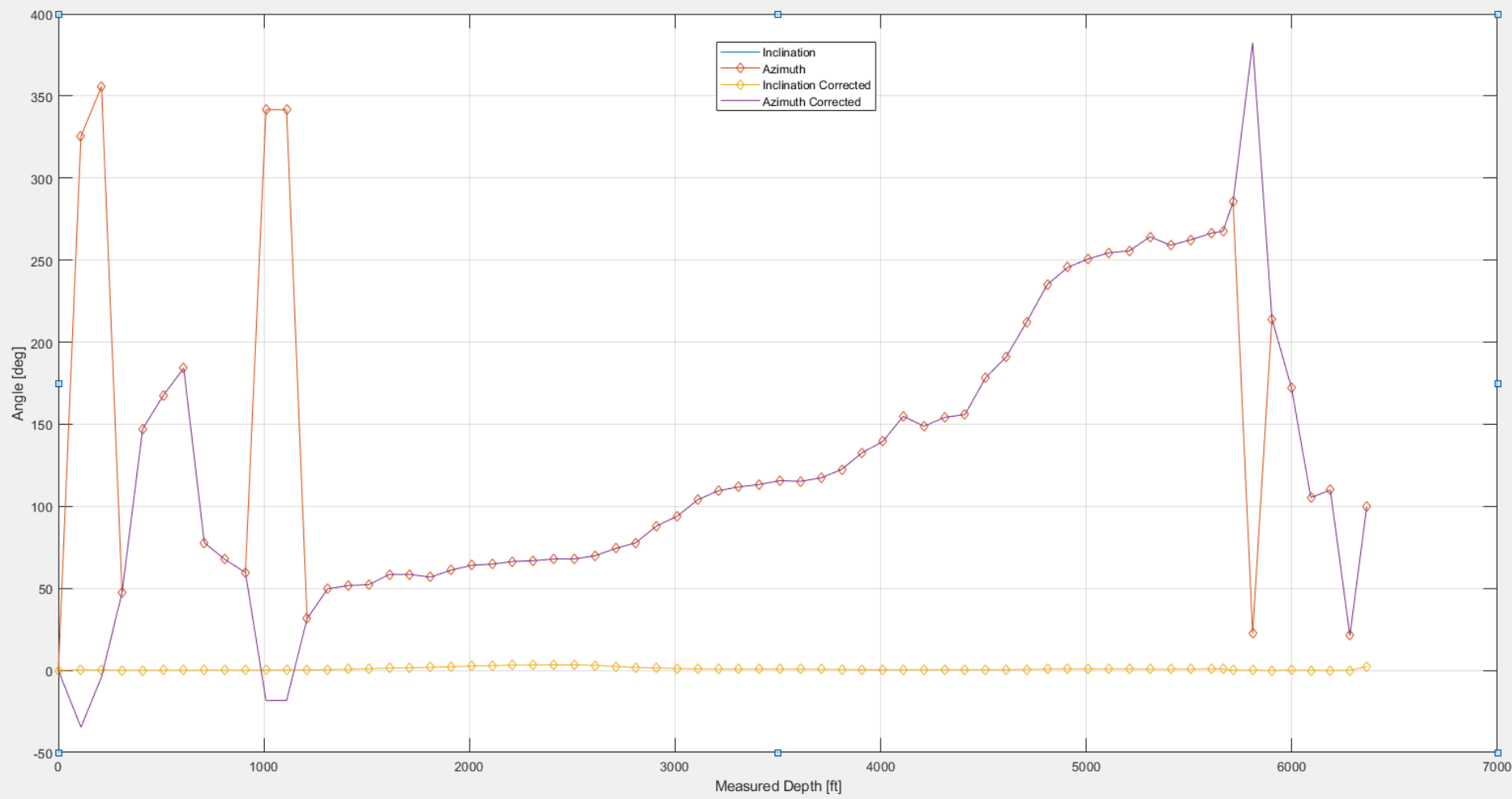
NNE_Bogges_13H– Job Summary. Section01. Pass01. Stair Casing.



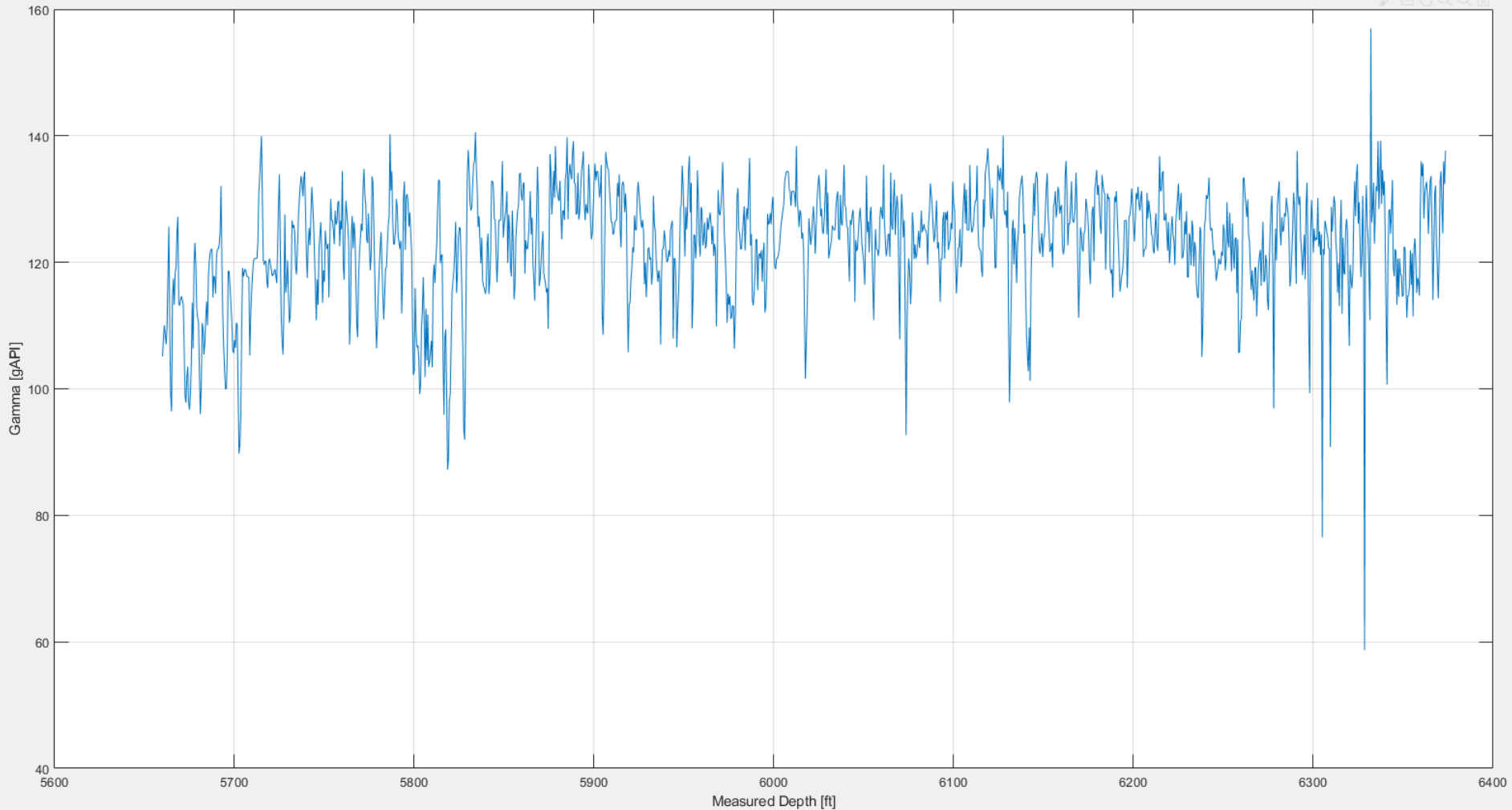
NNE_Boggess_13H– Job Summary. Section01. Pass01. Stair Casing.



NNE_Boggess_13H– Job Summary. Section01. Inclination & Azimuth.



NNE_Boggess_13H– Job Summary. Section01. Gamma API (GRC_D).



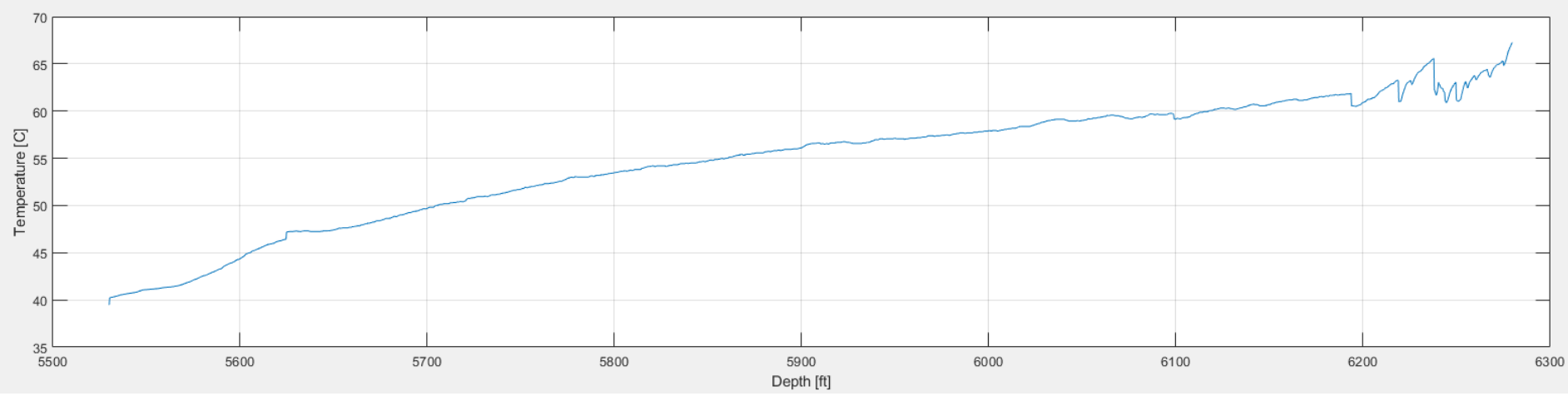
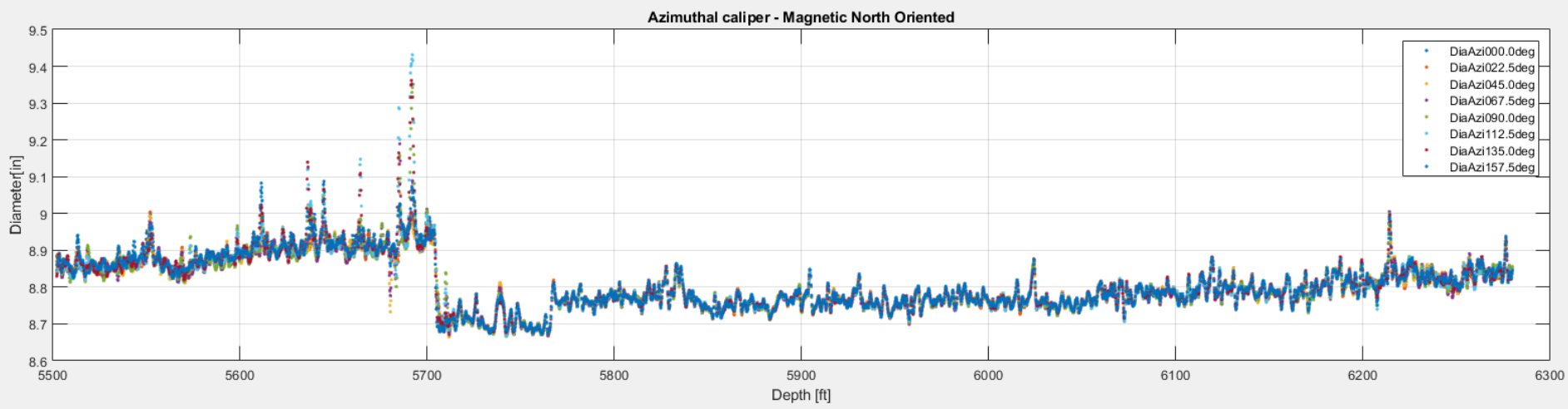
NNE_Bogges_13H– Job Summary.

Section 01. Pass01 (vertical, drill)

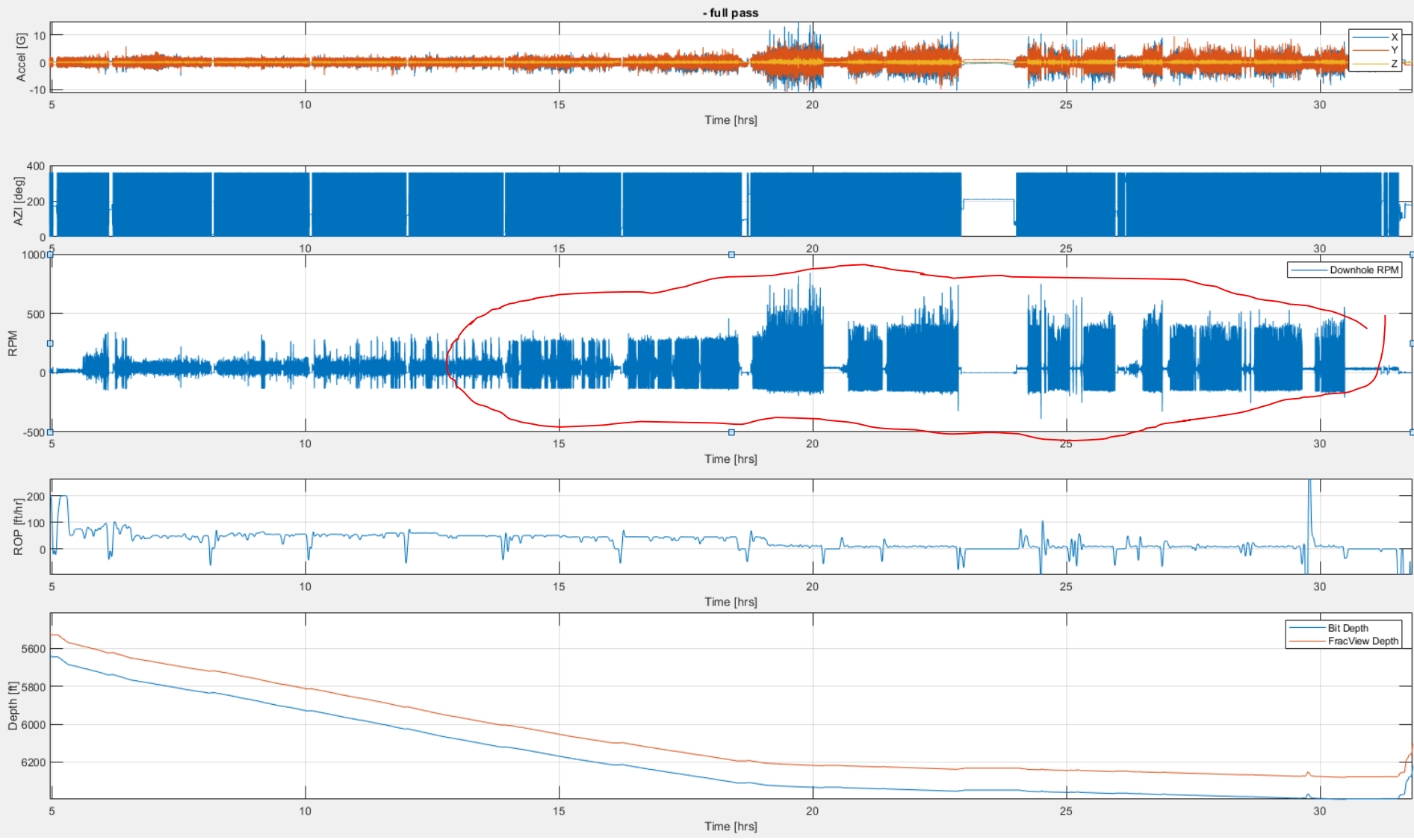


- **FV Sensor at 5,502 to 6,280 ft**
- **FV Sensor to Bit Distance ~ 115.8 ft**
- **Severe Stick-Slip (?)**

NNE_Boggess_13H– Job Summary. Section01. Pass01. Azimuthal Calipers.

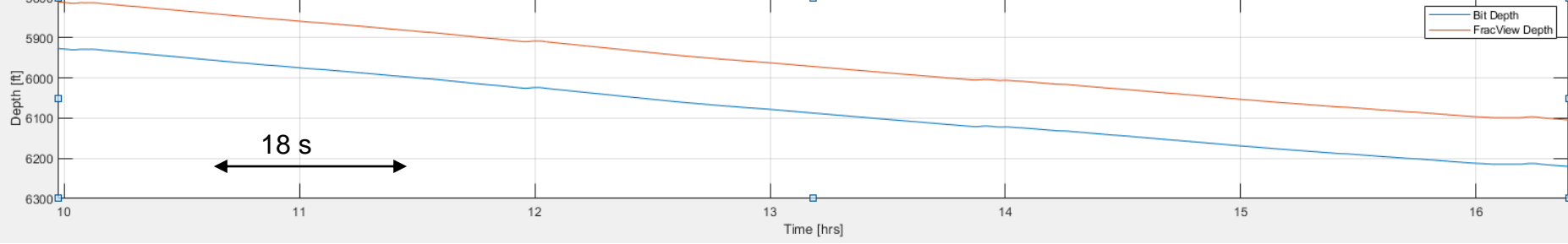
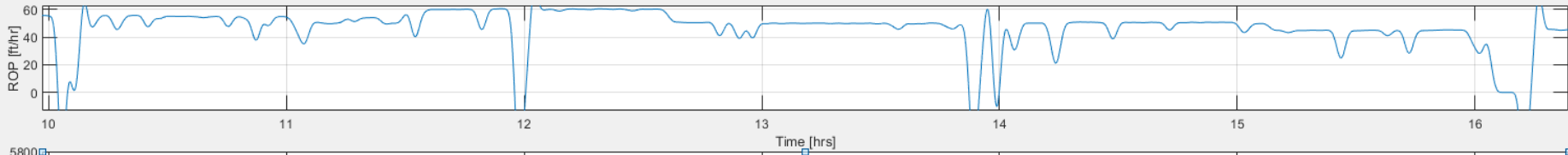
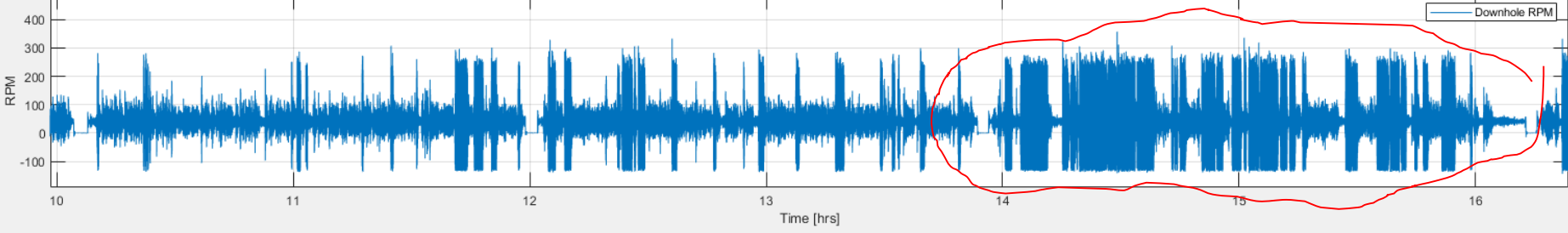
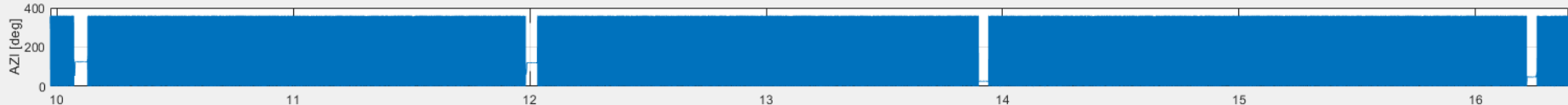
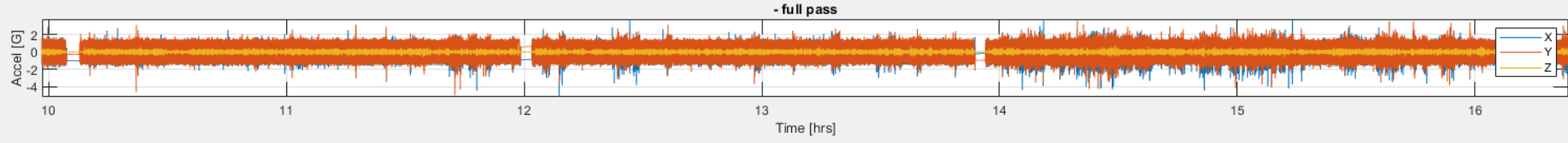


NE_Bogges_13H- Job Summary. Section01. Pass01. Motion Dynamics.



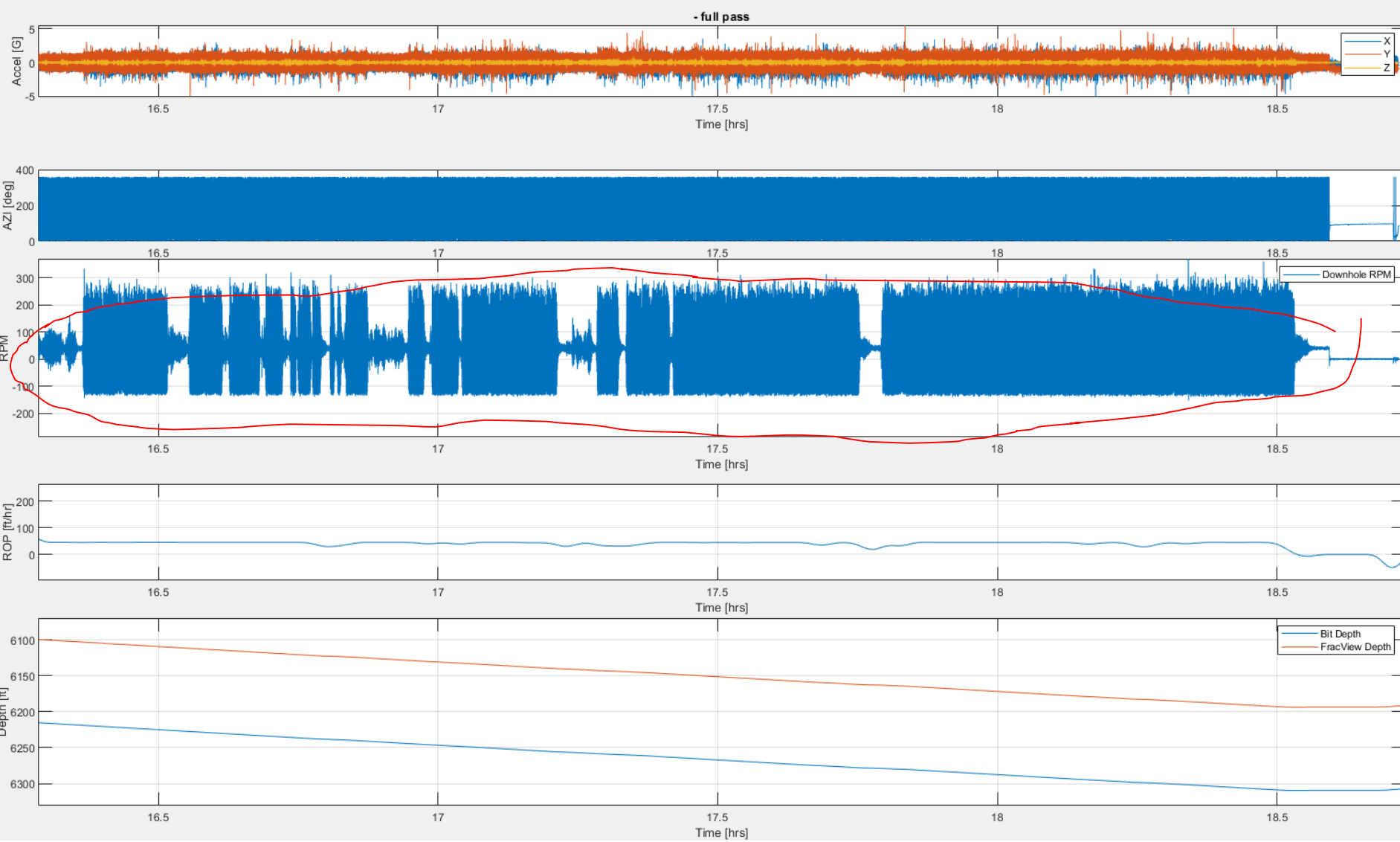
NNE_Bogges_13H- Job Summary.

Section01. Pass01. Motion Dynamics (Stick Slip zoom)



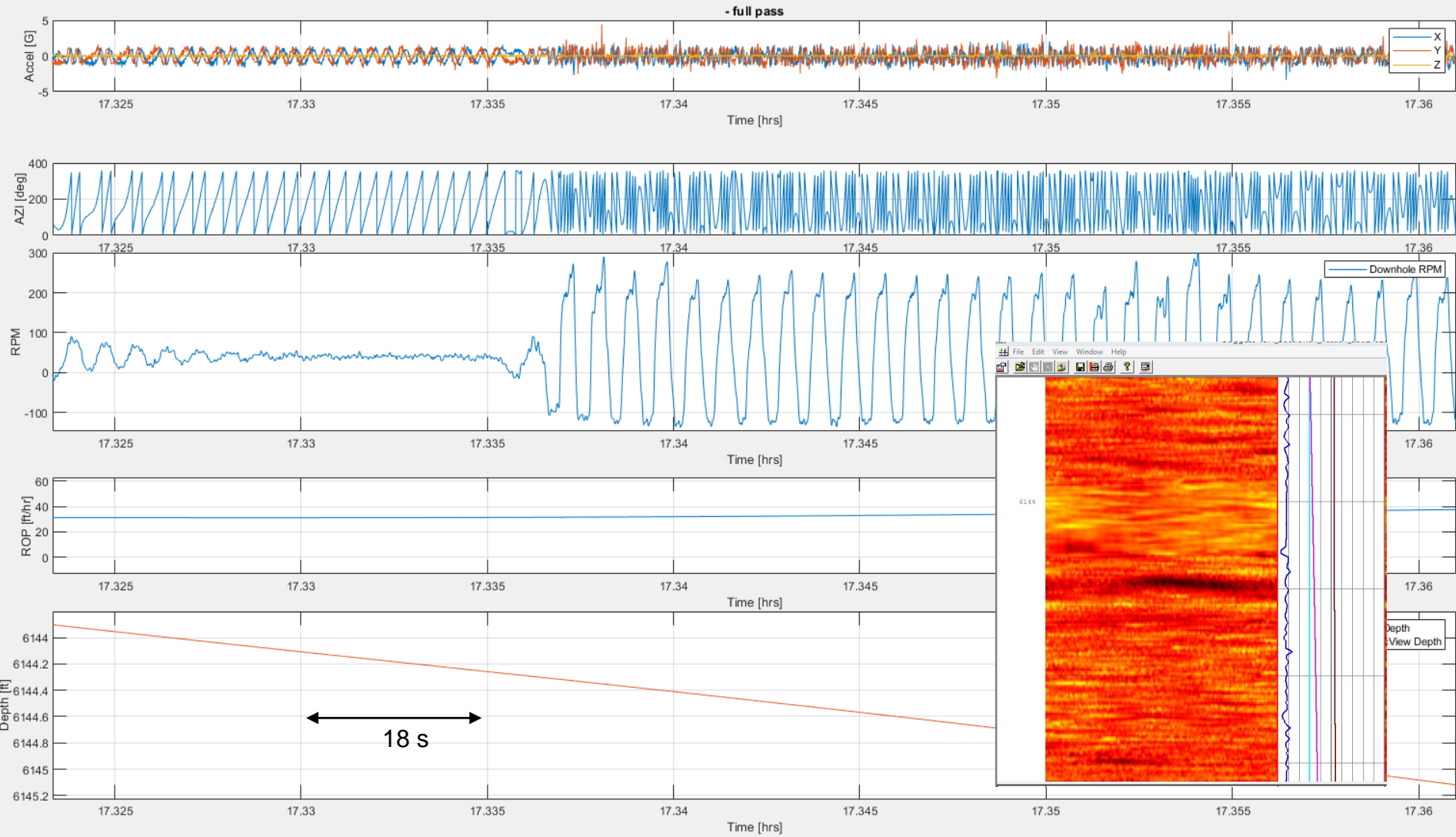
NNE_Bogges_13H- Job Summary.

Section01. Pass01. Motion Dynamics (Stick Slip zoom)



NNE_Bogges_13H- Job Summary.

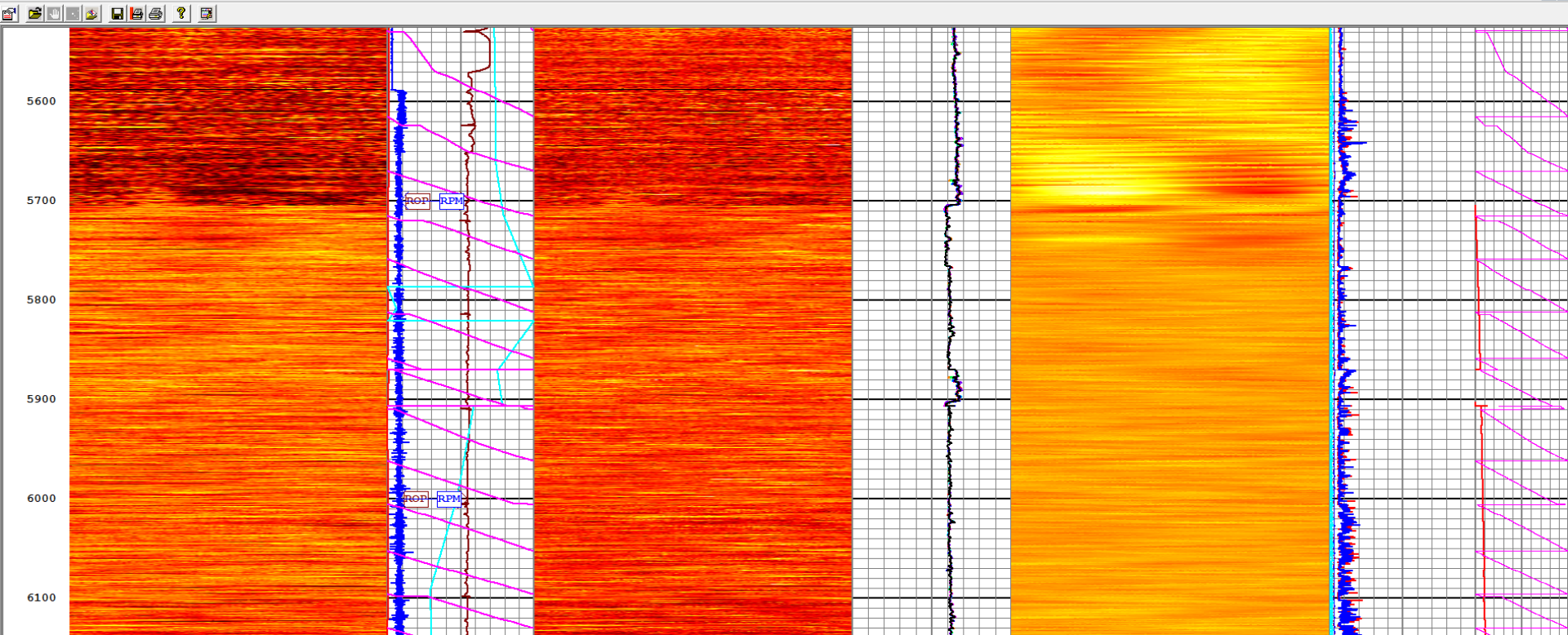
Section01. Pass01. Motion Dynamics (Stick Slip zoom)



NNE_Bogges_13H– Job Summary. Section01. Pass01. BHC MAG S1 vs S2



Bogges 13H_Section01_Pass01_5502-6280ft_FracView_AmplMerg_DB_MAG_BHC_S12_LIN.dlis - Schlumberger DataView - [Bogges using FV_2AMP_Caliper_RPMROP_Azimet]



0.000	0.078	0.156	0.234	0.312	0.390	0.468	0.546	0.624	0.702	0.780	0.858	0.936	1.000
FV S1 MAG BHC Merged Tx12 (AmpMrgS1)													

ROP (ROP)	
-500	500
ft/hr	
RPM_Filtered (RPM)	
0	500
rpm	
Hole Deviation (DEVI)	
0	100
deg	
Hole Azimuth (HAZI)	

0.000	0.039	0.078	0.117	0.156	0.234	0.312	0.352	0.430	0.508	0.586	0.664	0.742	0.820	0.898	1.000
FV S2 MAG BHC Merged Tx12 (AmpMrgS2)															

BH Diameter 0deg (CalAzi1)	
6.8	10
in	
BH Diameter 22.5deg (CalAzi2)	
6.8	10
in	
BH Diameter 45deg (CalAzi3)	

3.400	3.525	3.650	3.775	3.900	4.025	4.150	4.275	4.400	4.525	4.650	4.775	4.900	5.000
FV S1 MAG Caliper Image (Radius) (CalMrgS1)													

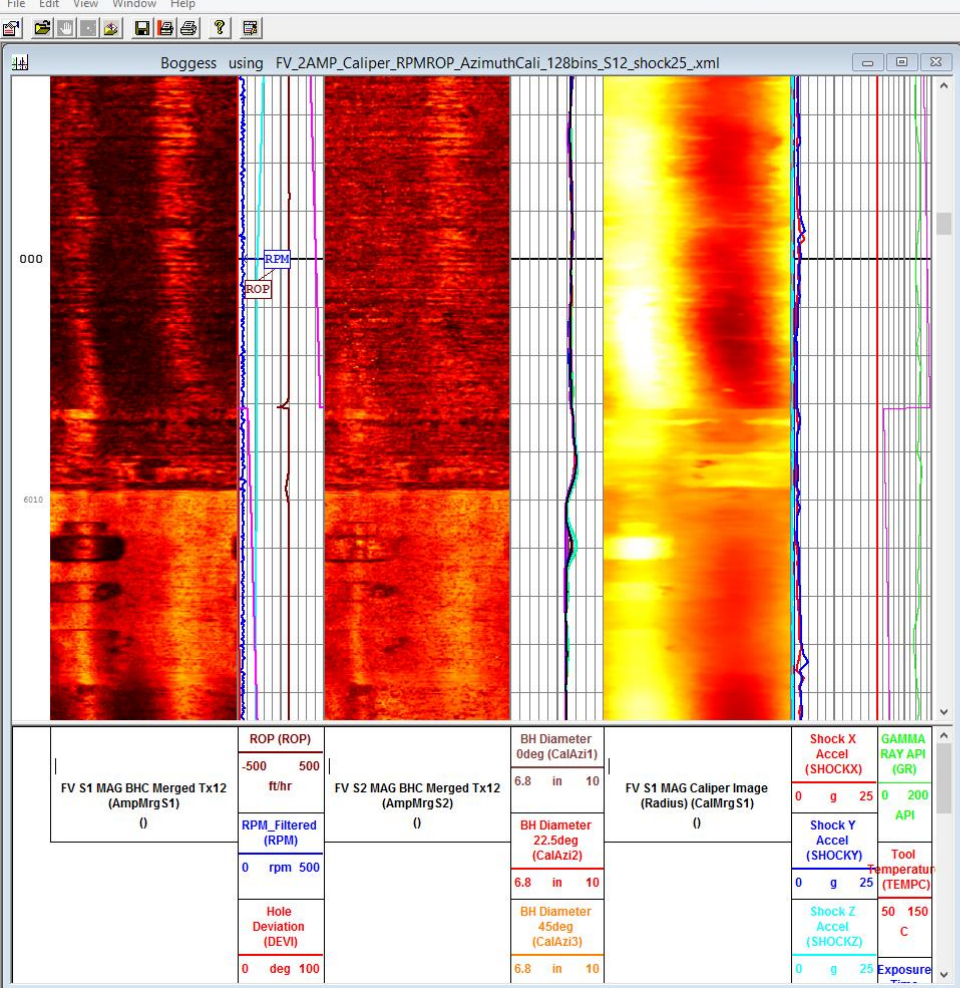
Shock X Accel (SHOCKX)	
0	25
g	
Shock Y Accel (SHOCKY)	
0	25
g	
Shock Z Accel (SHOCKZ)	
0	25
g	
RMS X Accel (VIBRX)	

GAMMA RAY API (GR)	
0	200
API	
Tool Temperature (TEMPC)	
50	150
C	
Exposure Time	

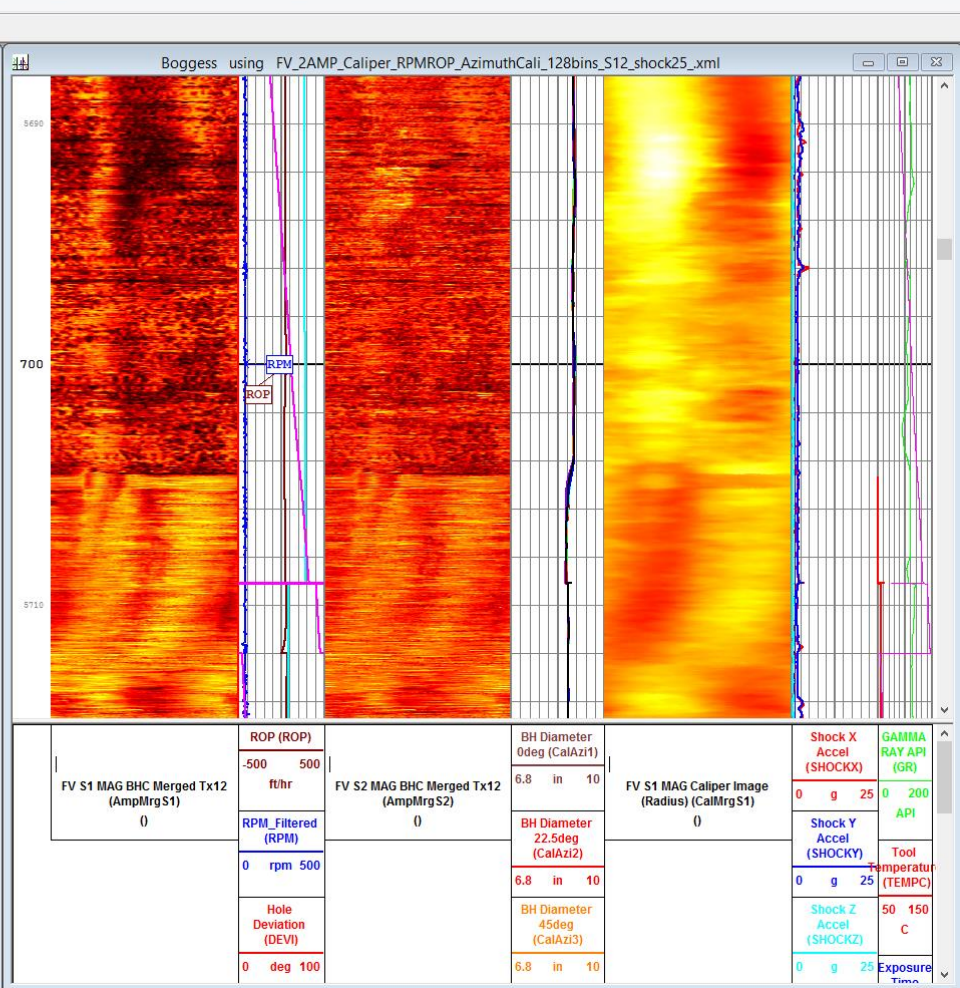
NE_Bogges_13H– Job Summary. Section01. Pass01. 13H vs 9H



Bogges 9H_Section01_Pass01_5850-6579ft_FracView_AmplMerg_DB_MAG_BHC_S12_LIN.dlis - Schlumberger DataView



9H



13H

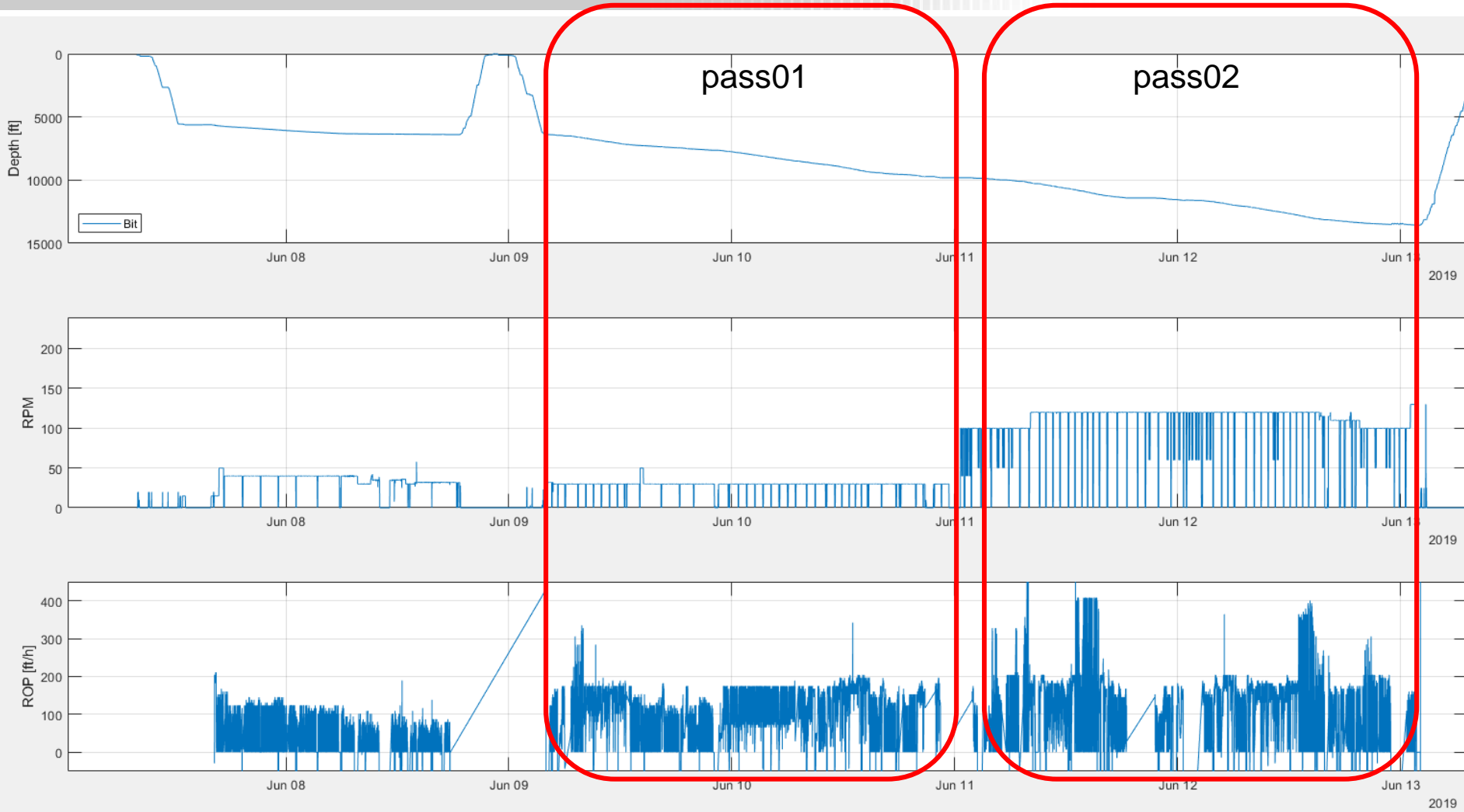
NNE_Boggess_13H– Job Summary.

Section02.

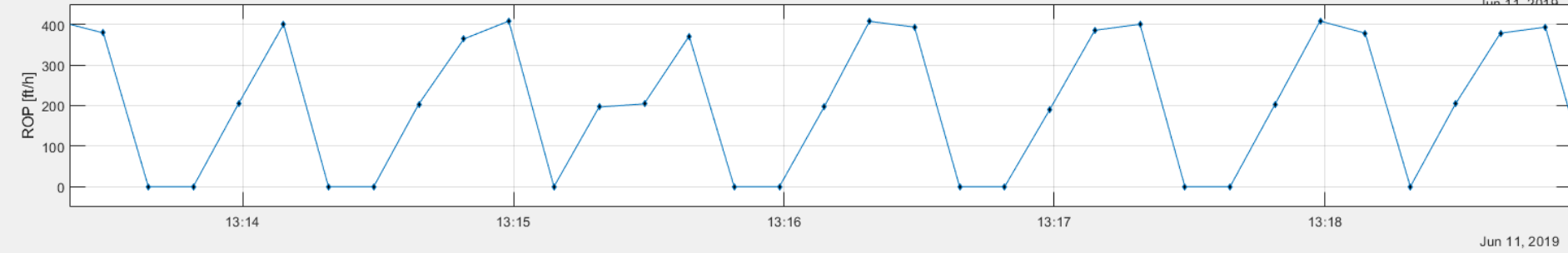
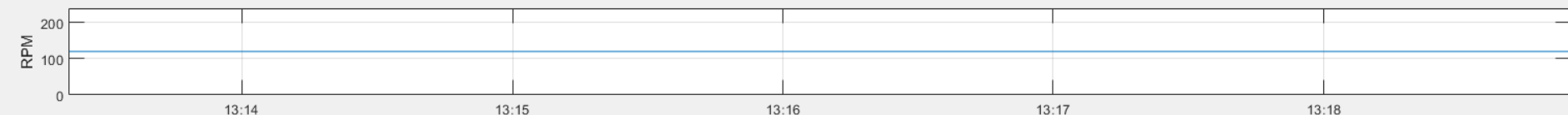
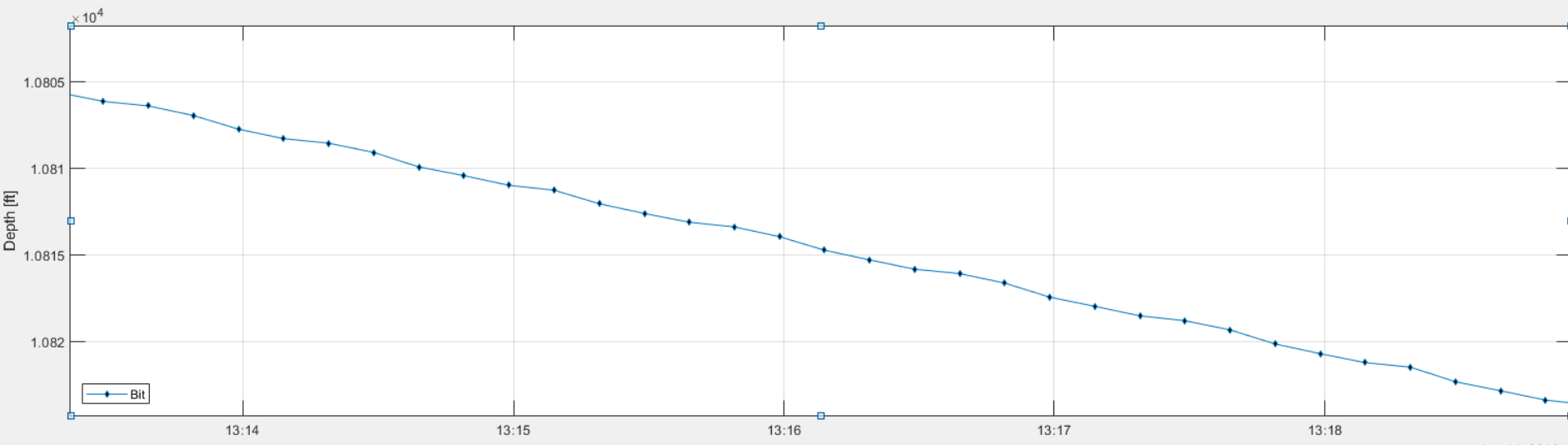


- **Section 02 (vertical, curve, lateral)**
 - **Pass01 (vertical+curve, drill)**
 - **Pass02 (lateral, drill)**

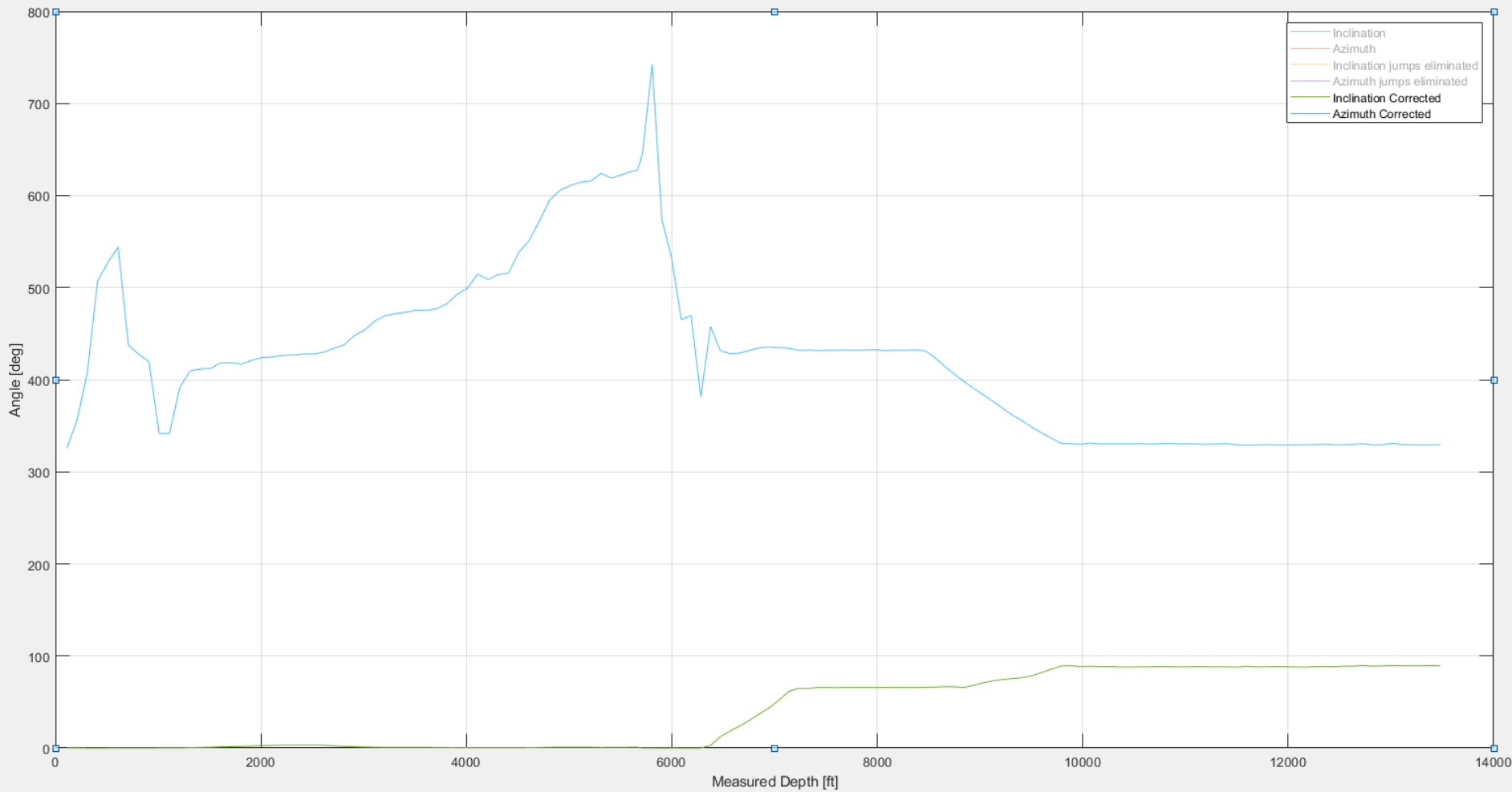
NE_Bogges_13H– Job Summary. Section02. Pass01 & 02



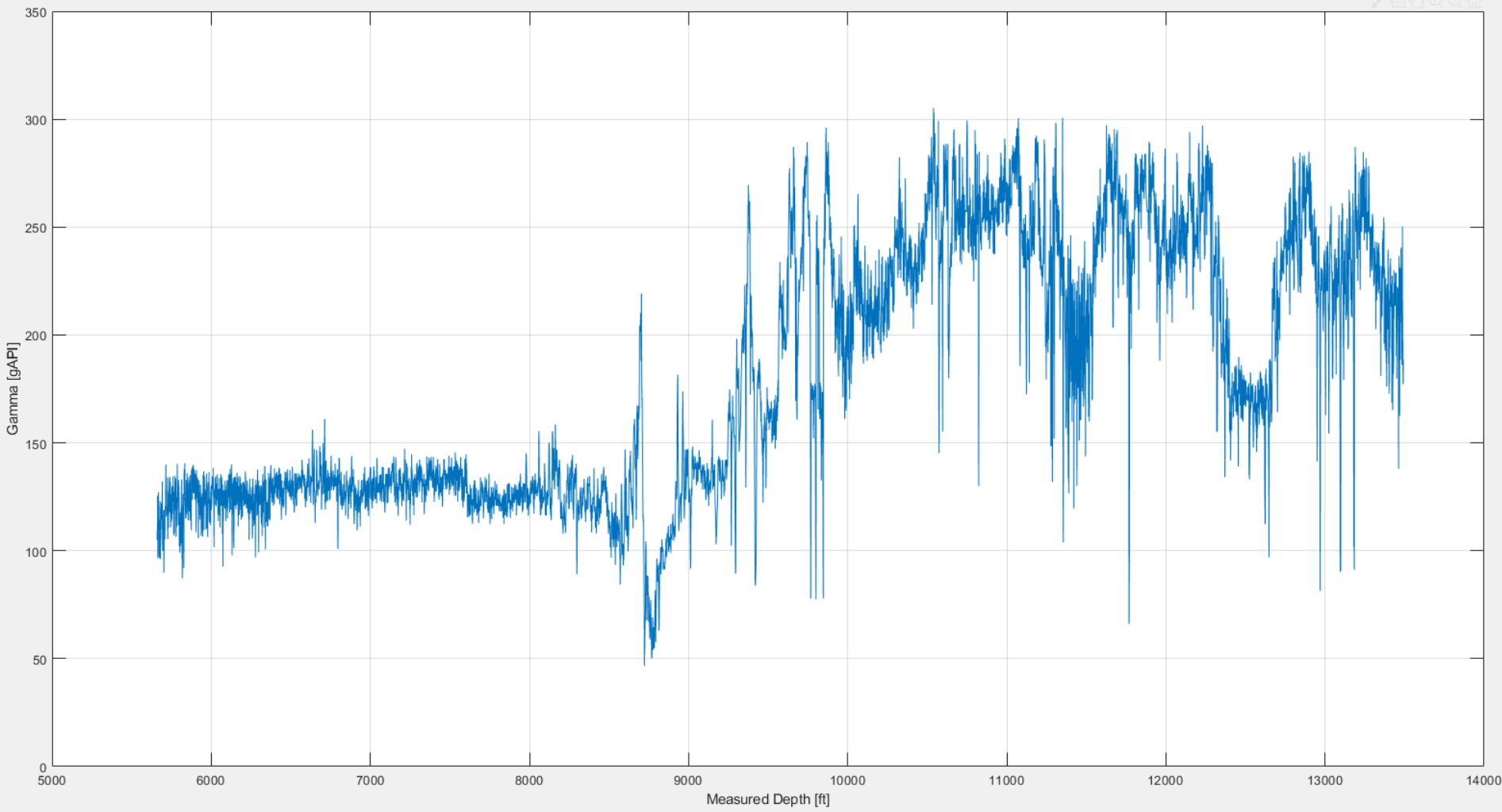
NNE_Boggess_13H– Job Summary. Section02.



NNE_Boggess_13H– Job Summary. Section02. Inclination & Azimuth.



NNE_Boggess_13H– Job Summary. Section02. Gamma API (GRC_D).



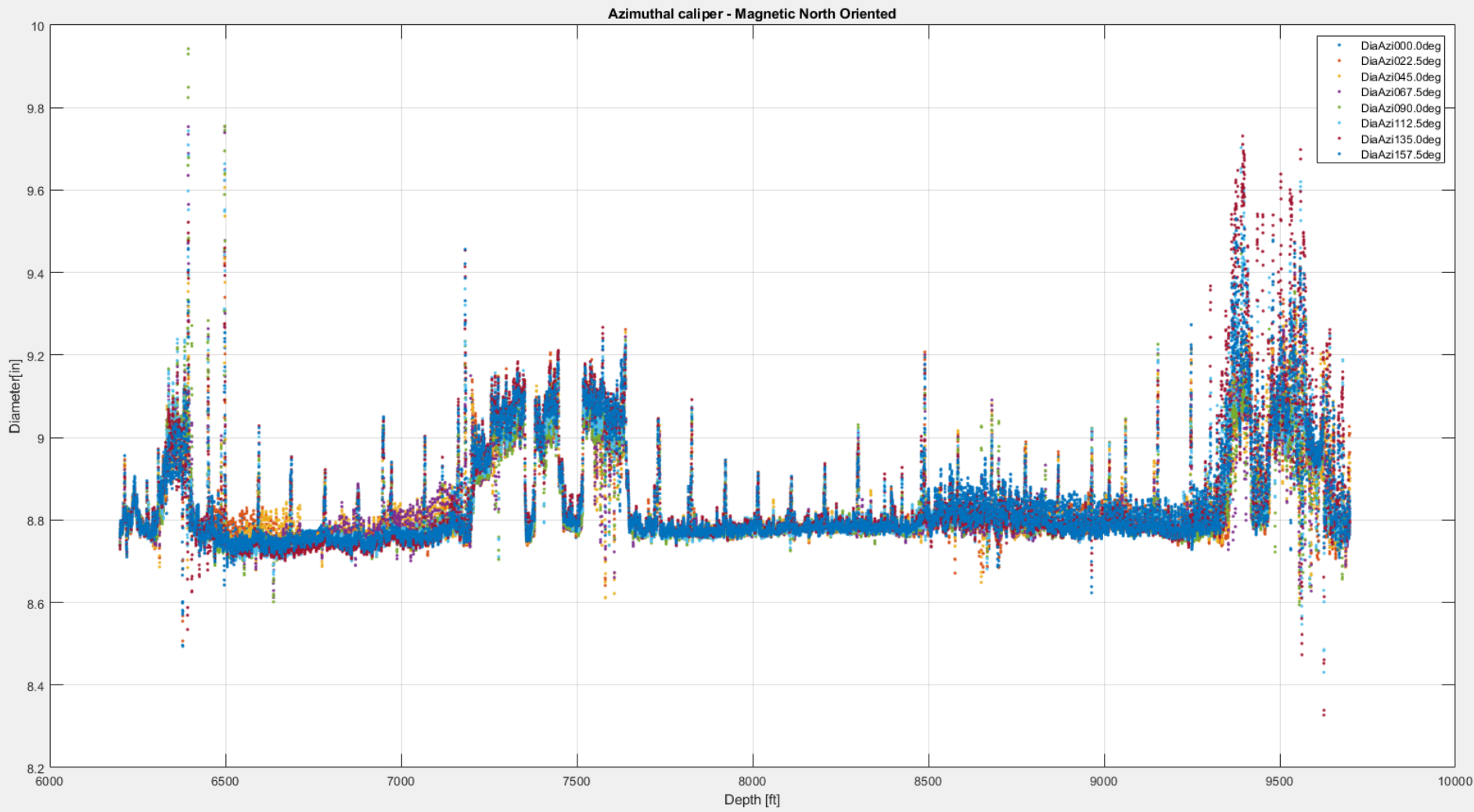
NNE_Boggess_13H– Job Summary.

Section 02. Pass01 (vertical+curve, drill)

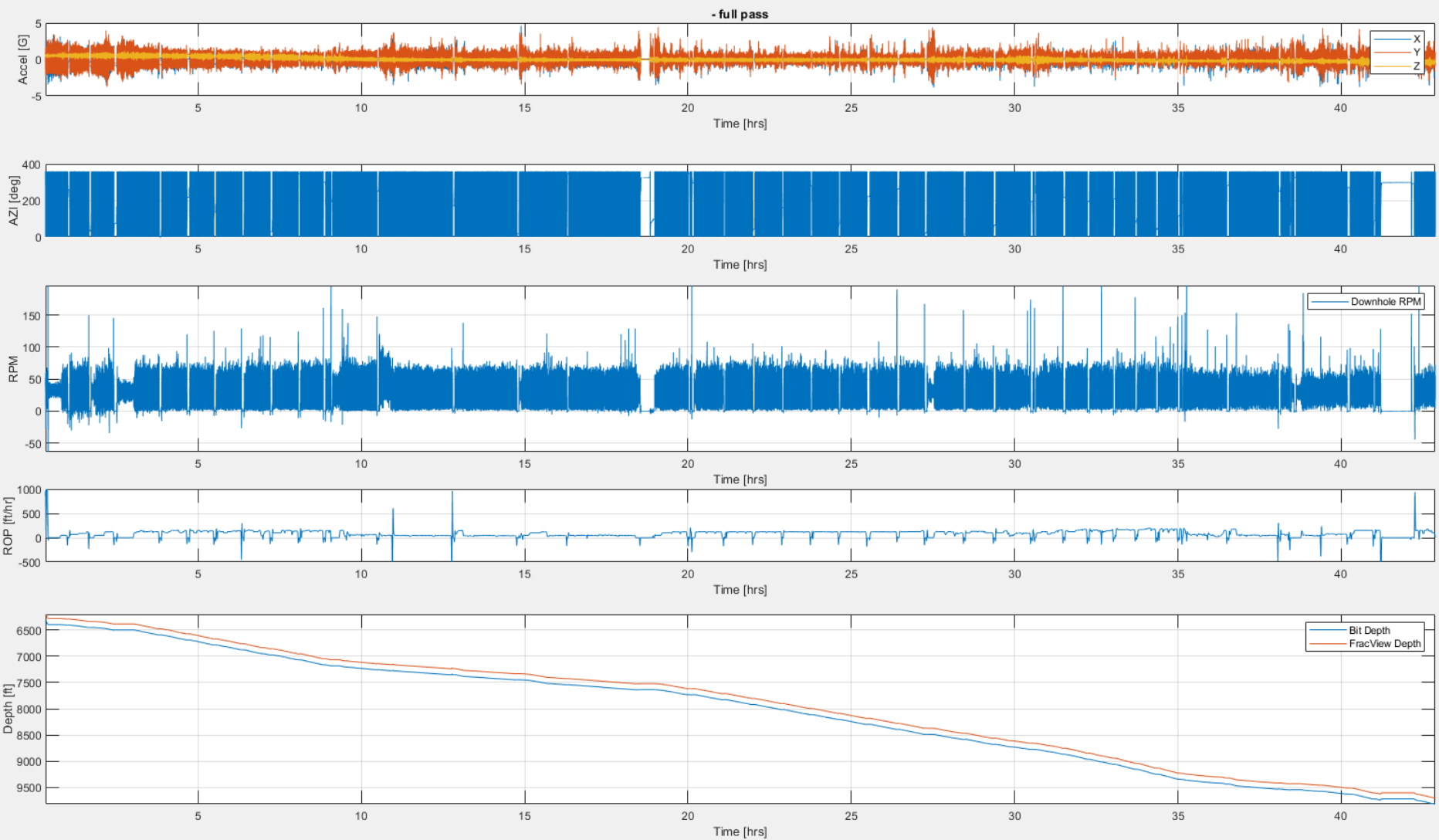


- **FV Sensor at 6,200 to 9,700 ft**
- **FV Sensor to Bit Distance ~ 115.85 ft**
- **Stick-Slip**

NNE_Boggess_13H– Job Summary. Section02. Pass01. Azimuthal Calipers.

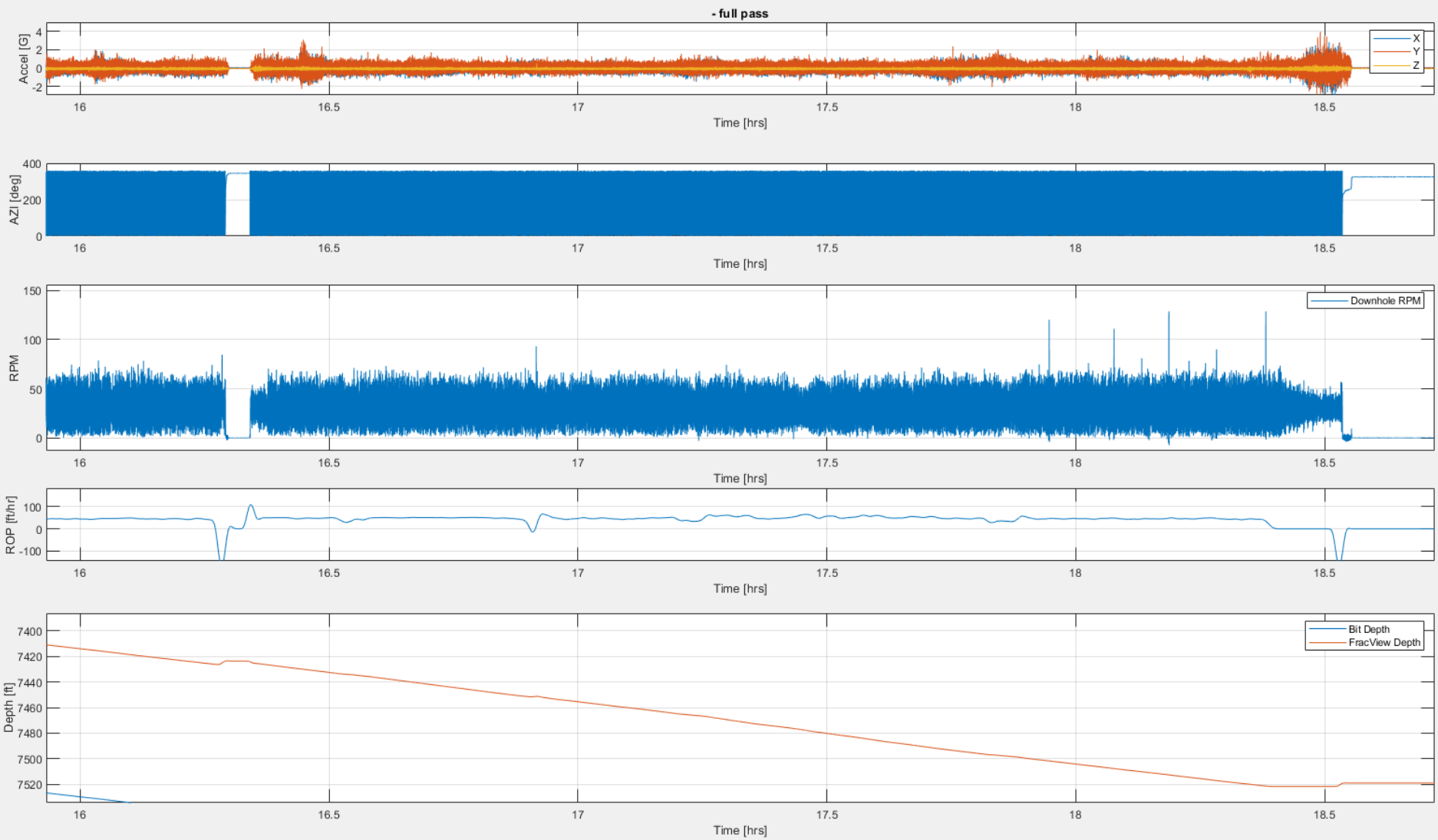


NE_Bogges_13H– Job Summary. Section02. Pass01. Motion Dynamics.

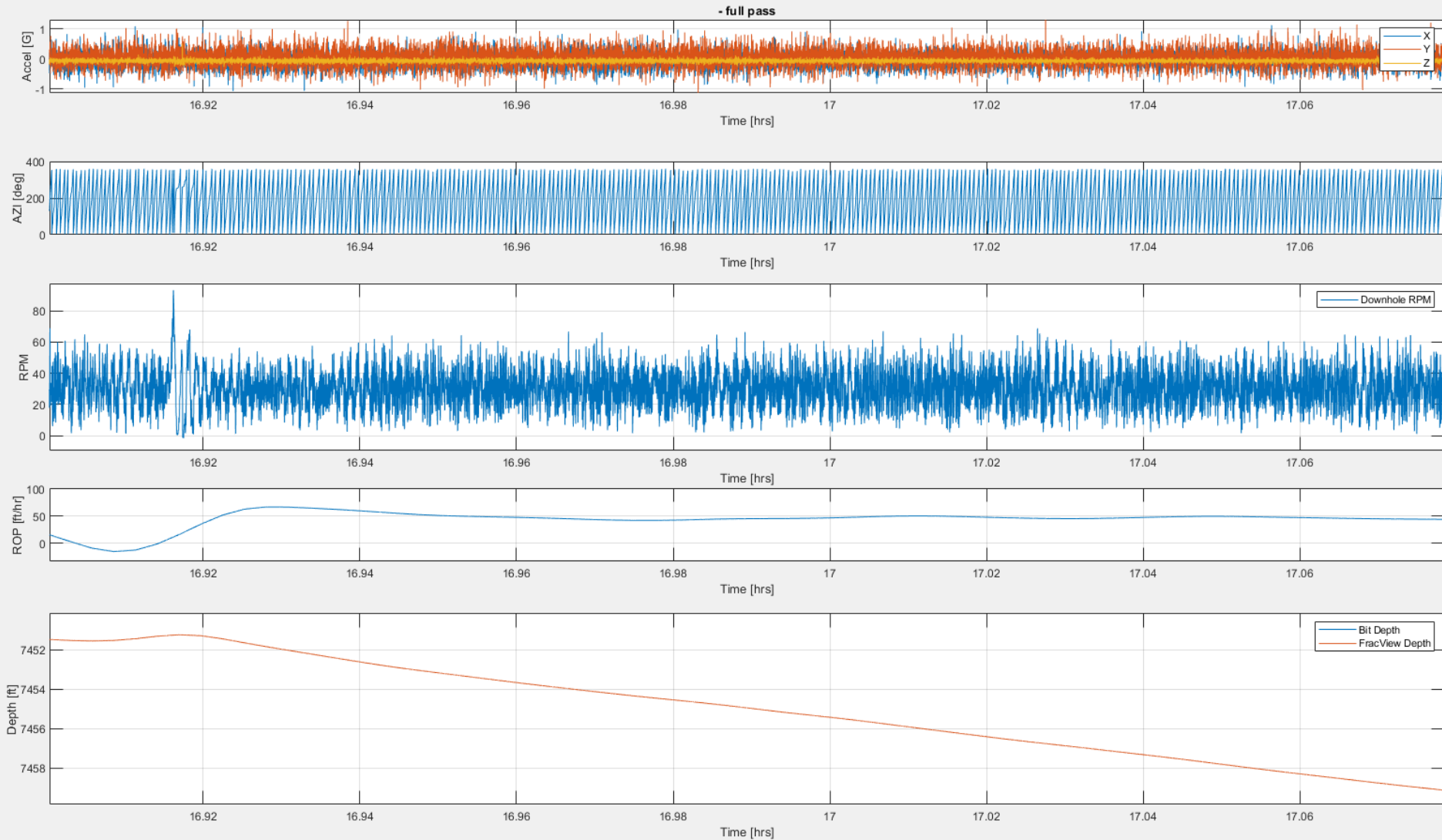


NE_Bogges_13H- Job Summary.

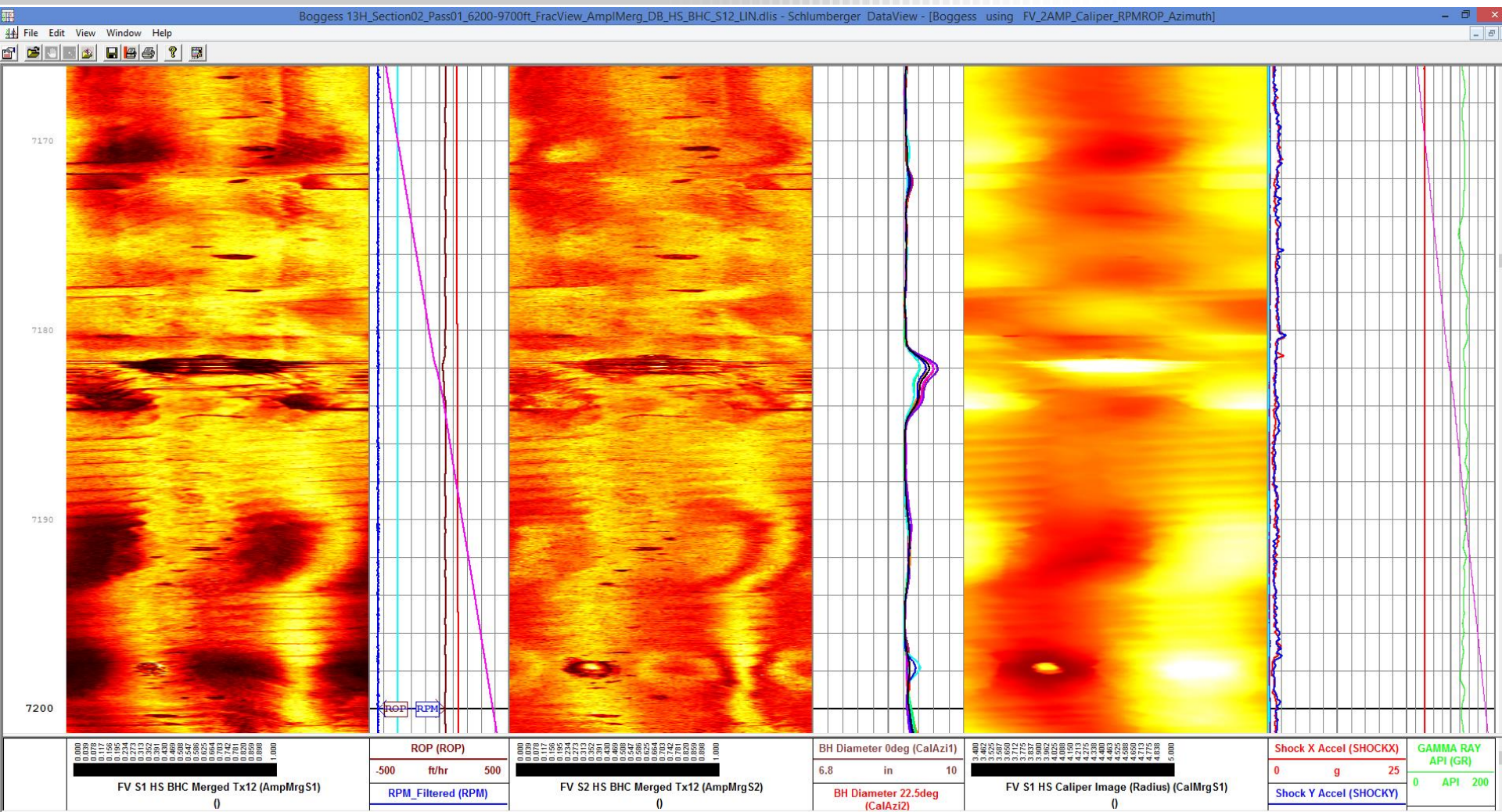
Section02. Pass01. Motion Dynamics (zoom in)



NE_Bogges_13H– Job Summary. Section02. Pass01. Motion Dynamics (zoom in)

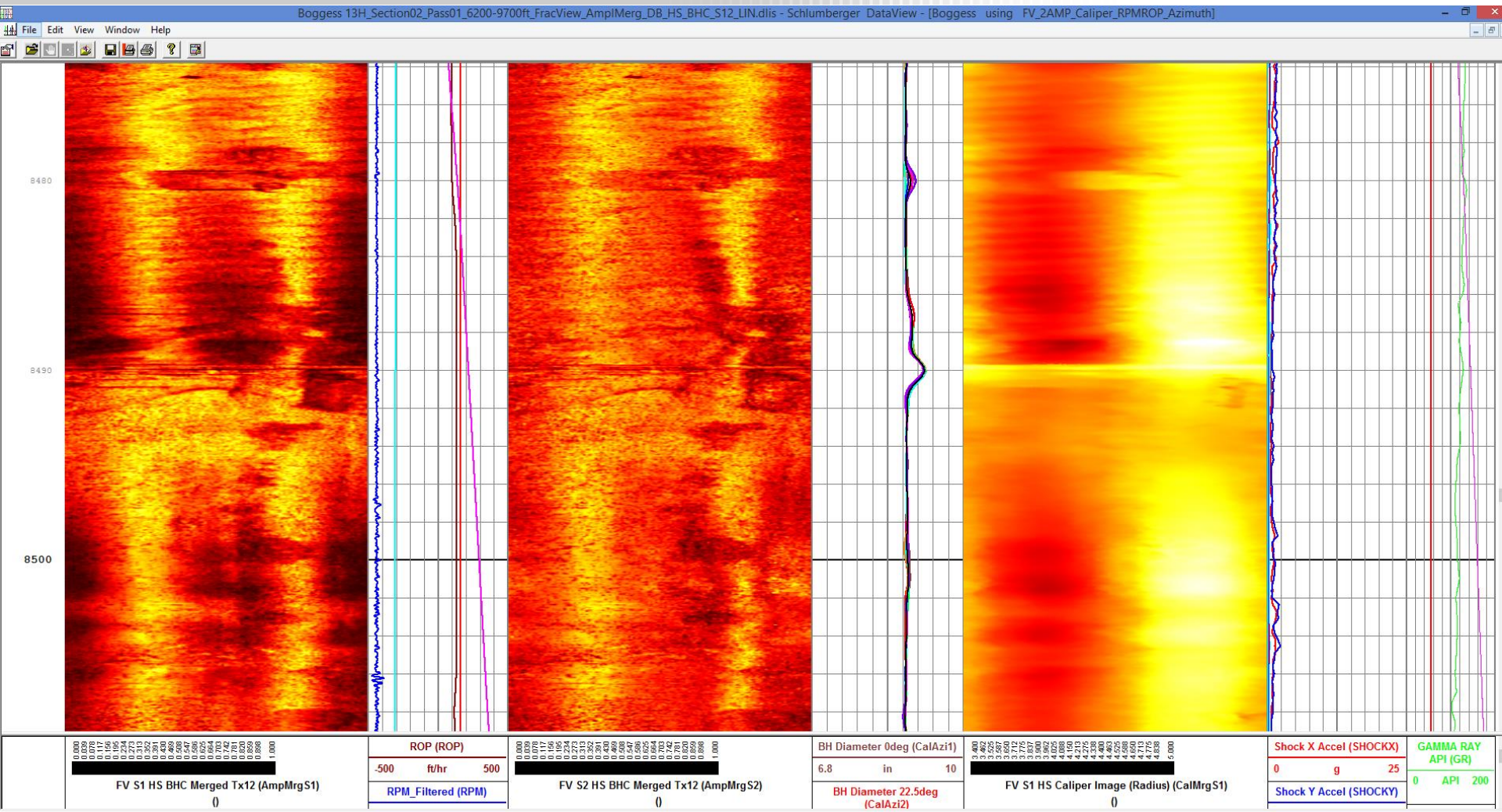


NE_Bogges_13H- Job Summary. Section02. Pass01. BHC HS S1 vs S2



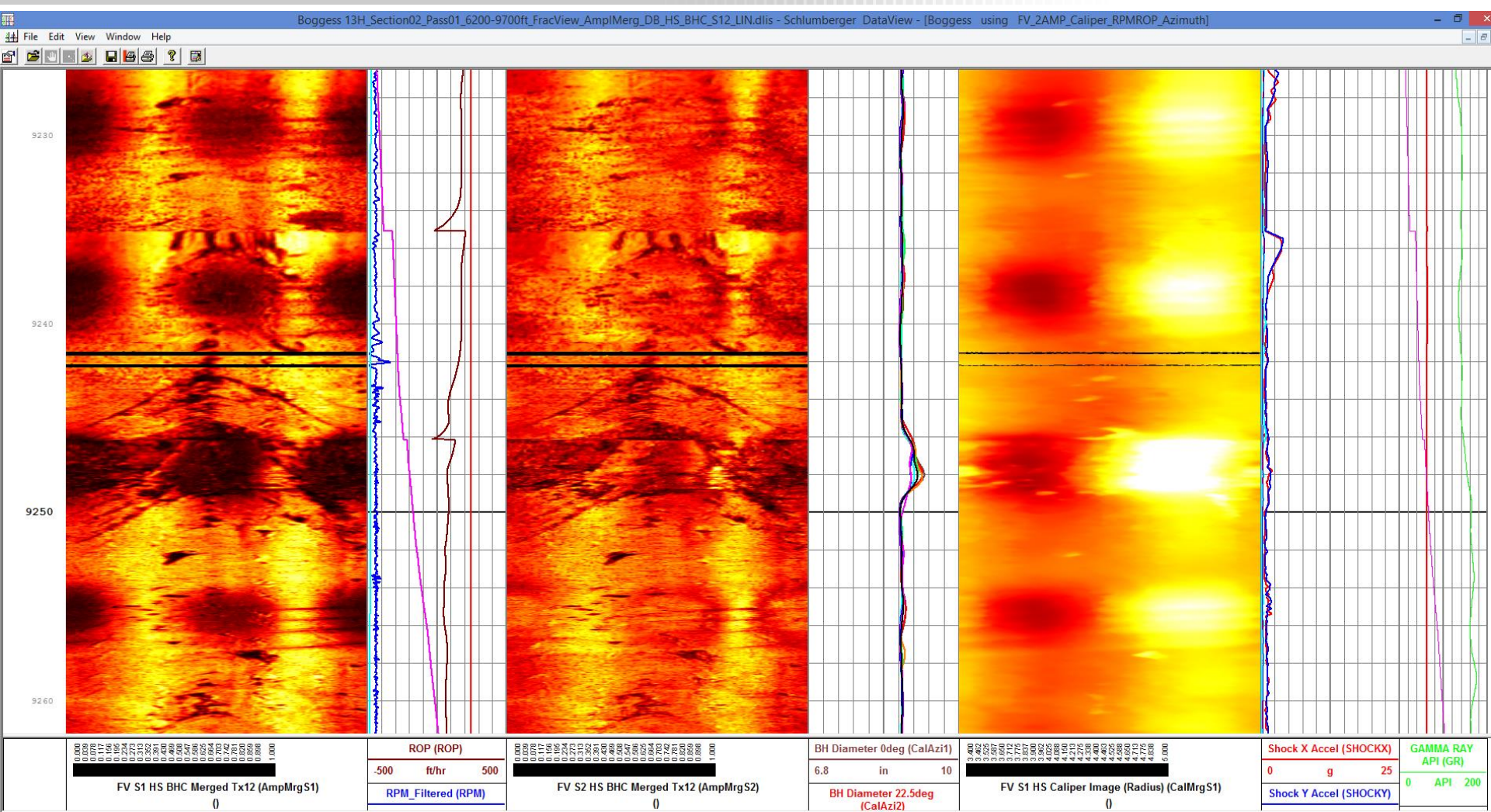
NNE_Boggess_13H– Job Summary.

Section02. Pass01. BHC HS S1 vs S2

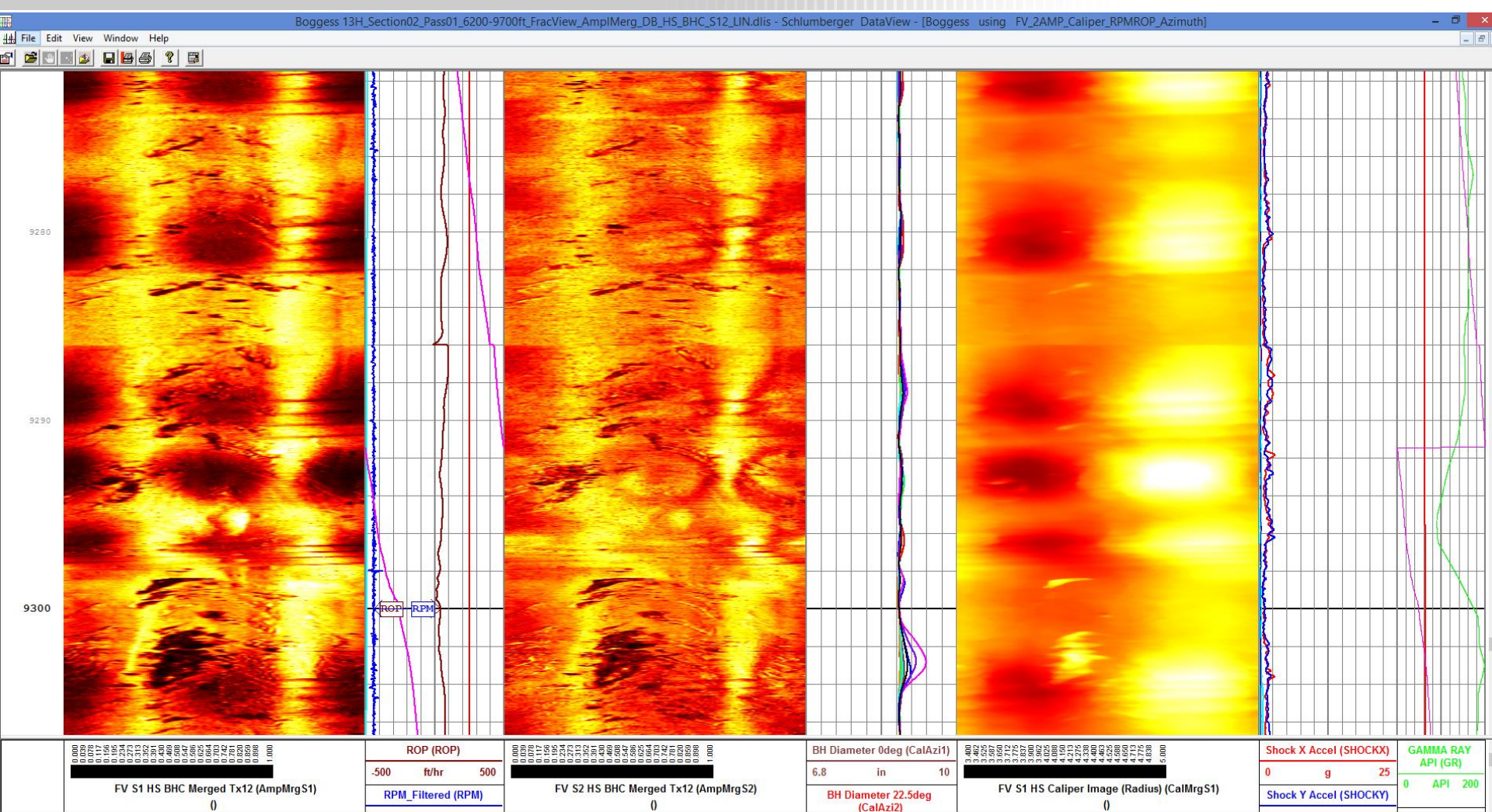


NEE_Bogges_13H- Job Summary.

Section02. Pass01. BHC HS S1 vs S2



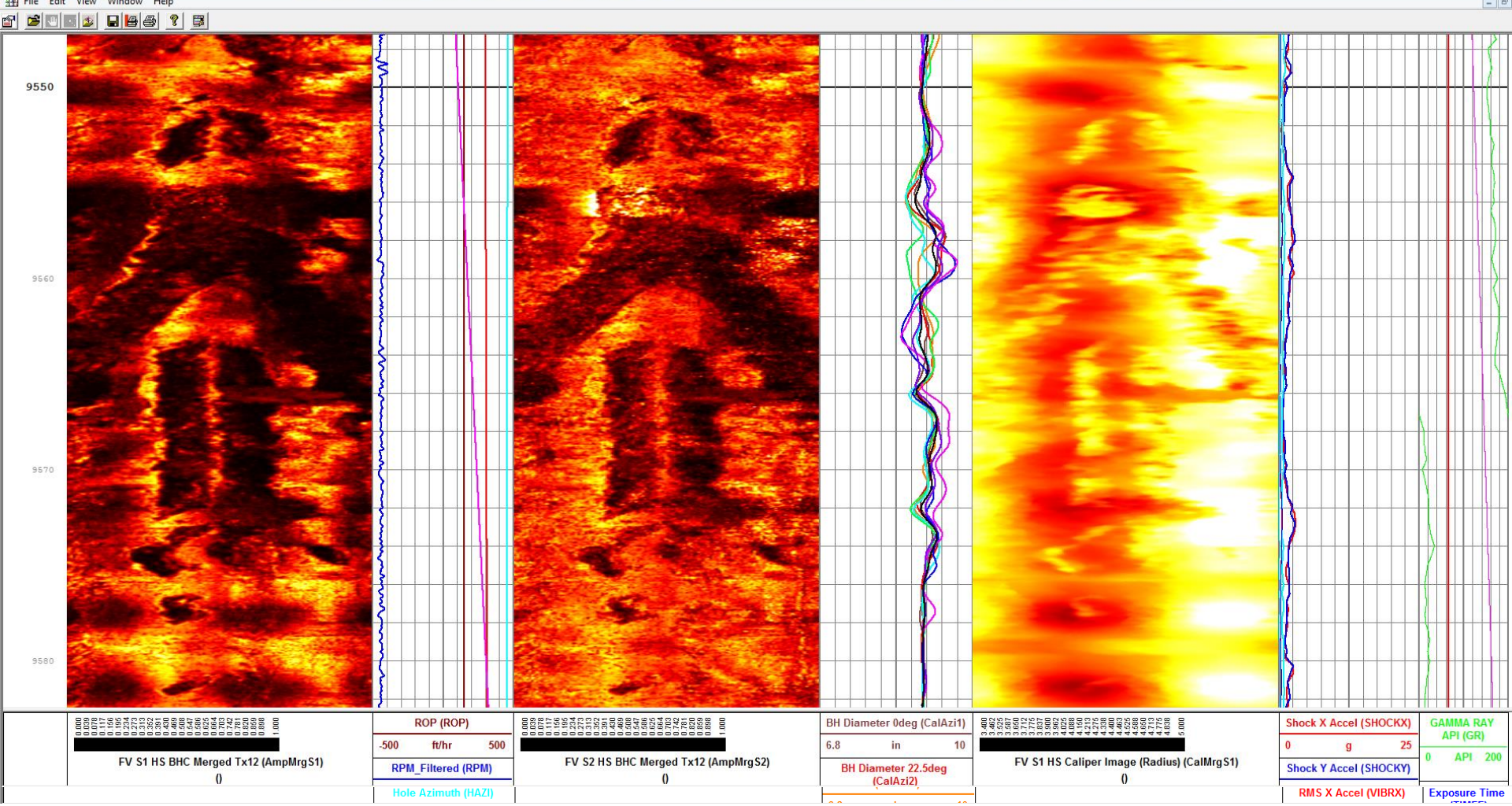
NNE_Boggess_13H– Job Summary. Section02. Pass01. BHC HS S1 vs S2



NE_Bogges_13H– Job Summary. Section02. Pass01. BHC HS S1 vs S2



Bogges 13H_Section02_Pass01_6200-9700ft_FracView_AmplMerg_DB_HS_BHC_S12_LIN.dllis - Schlumberger DataView - [Bogges using FV_2AMP_Caliper_RPMROP_Azimuth]



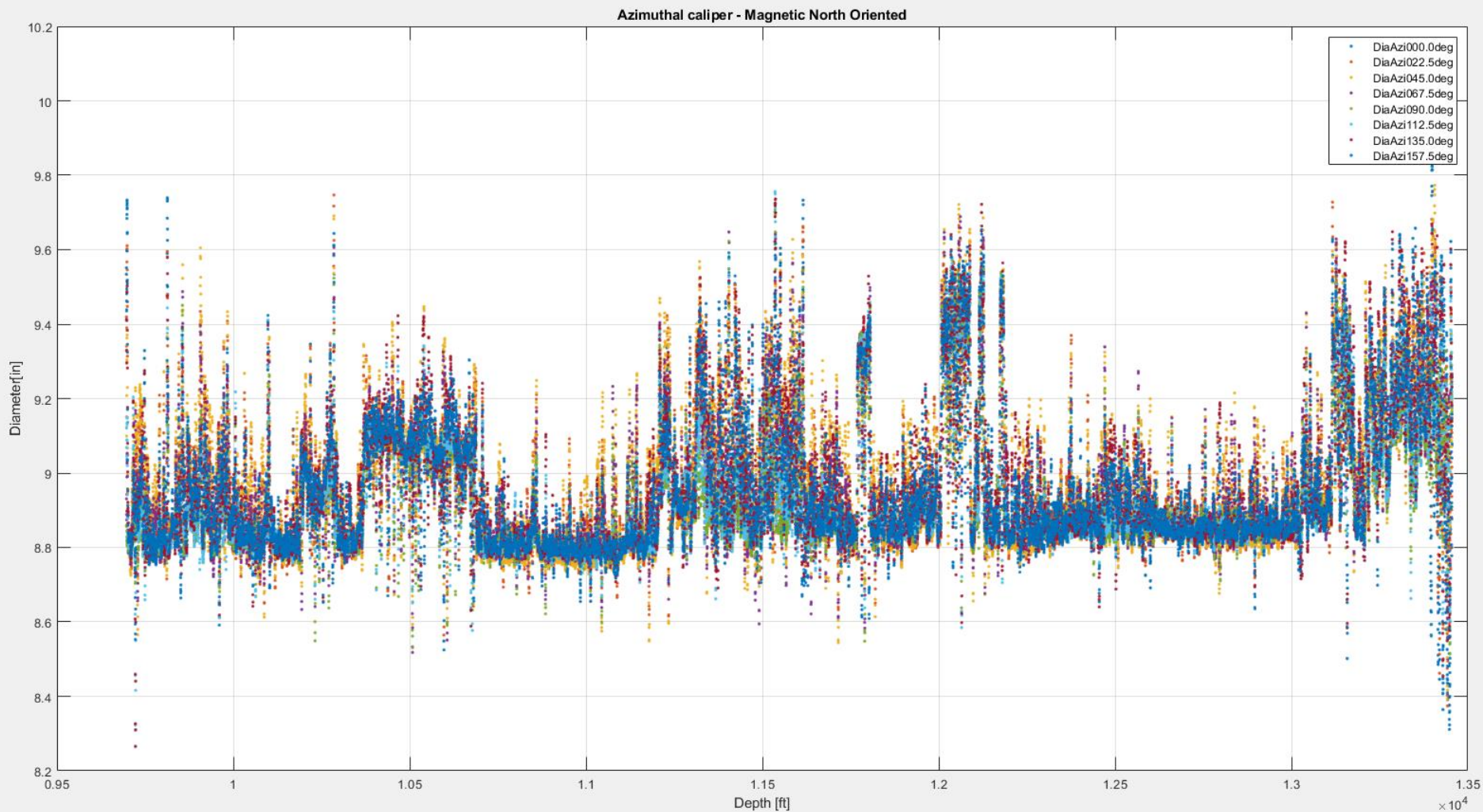
NNE_Boggess_13H– Job Summary.

Section 02. Pass02 (lateral, drill)

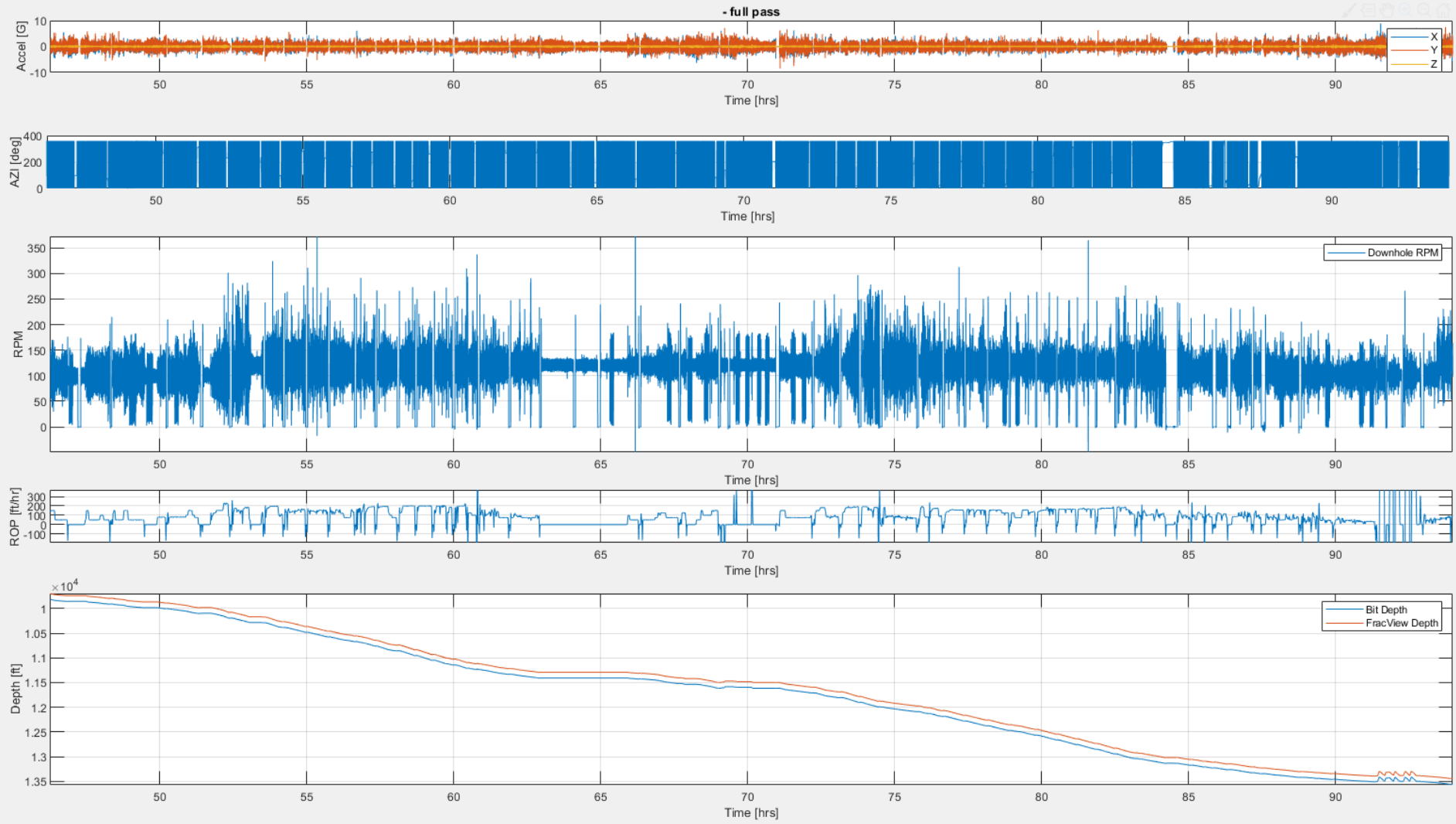


- **FV Sensor at 9,697 to 13,456 ft**
- **FV Sensor to Bit Distance ~ 115.85 ft**
- **Some Stick-Slip**

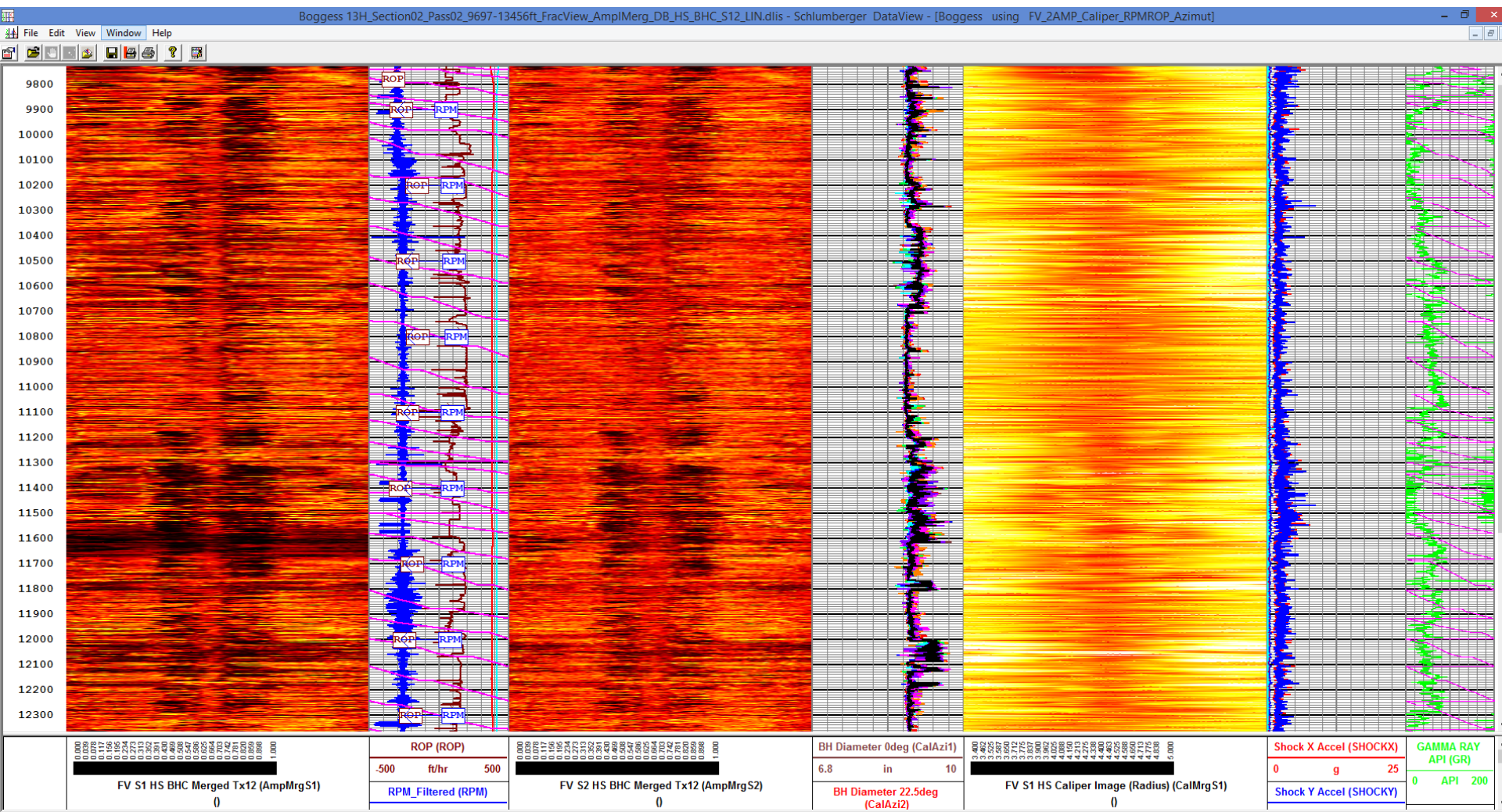
NE_Bogges_13H- Job Summary. Section02. Pass02. Azimuthal Calipers.



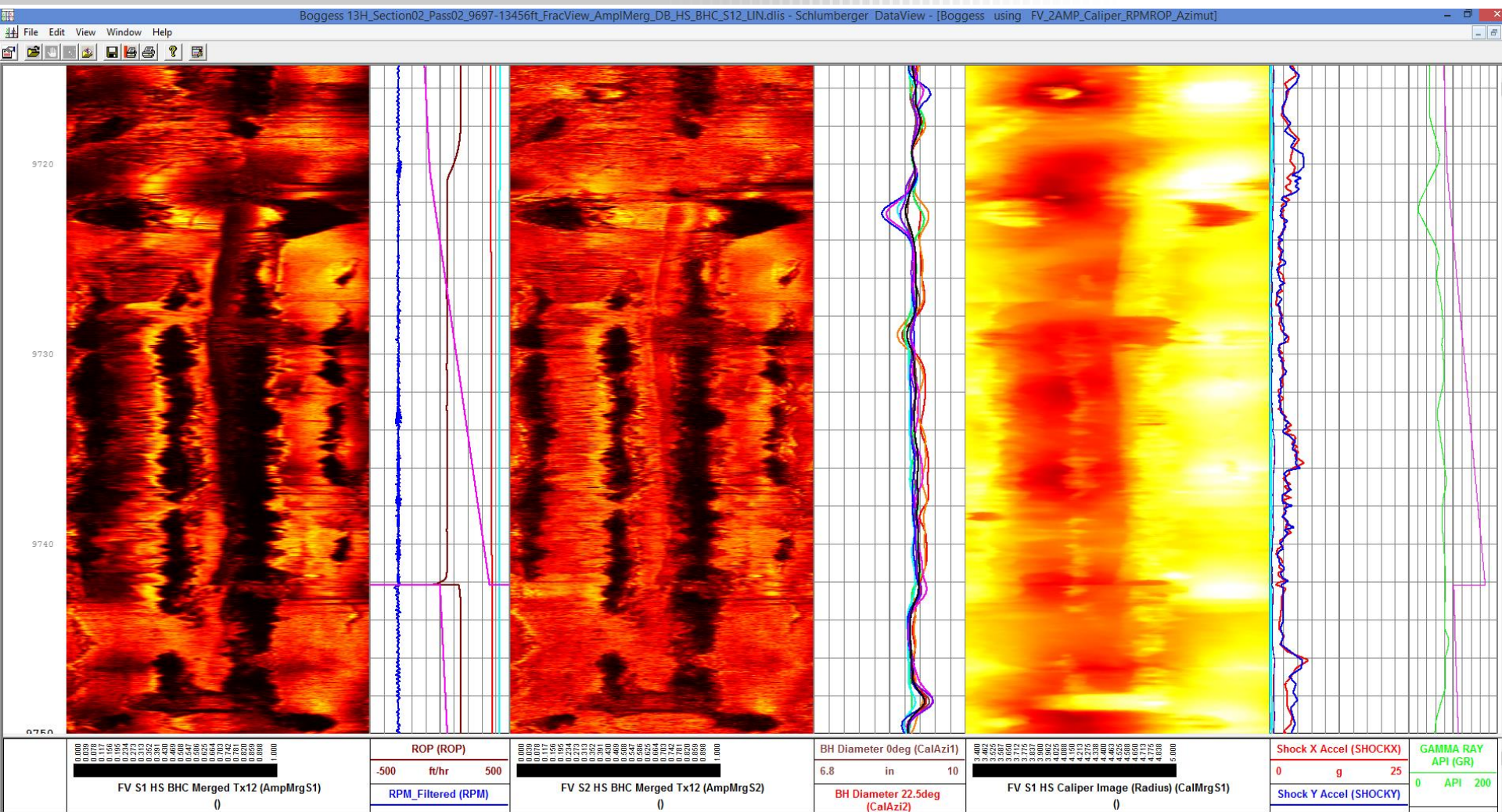
NE_Bogges_13H- Job Summary. Section02. Pass02. Motion Dynamics.



NNE_Bogges_13H– Job Summary. Section02. Pass02. BHC HS S1 vs S2

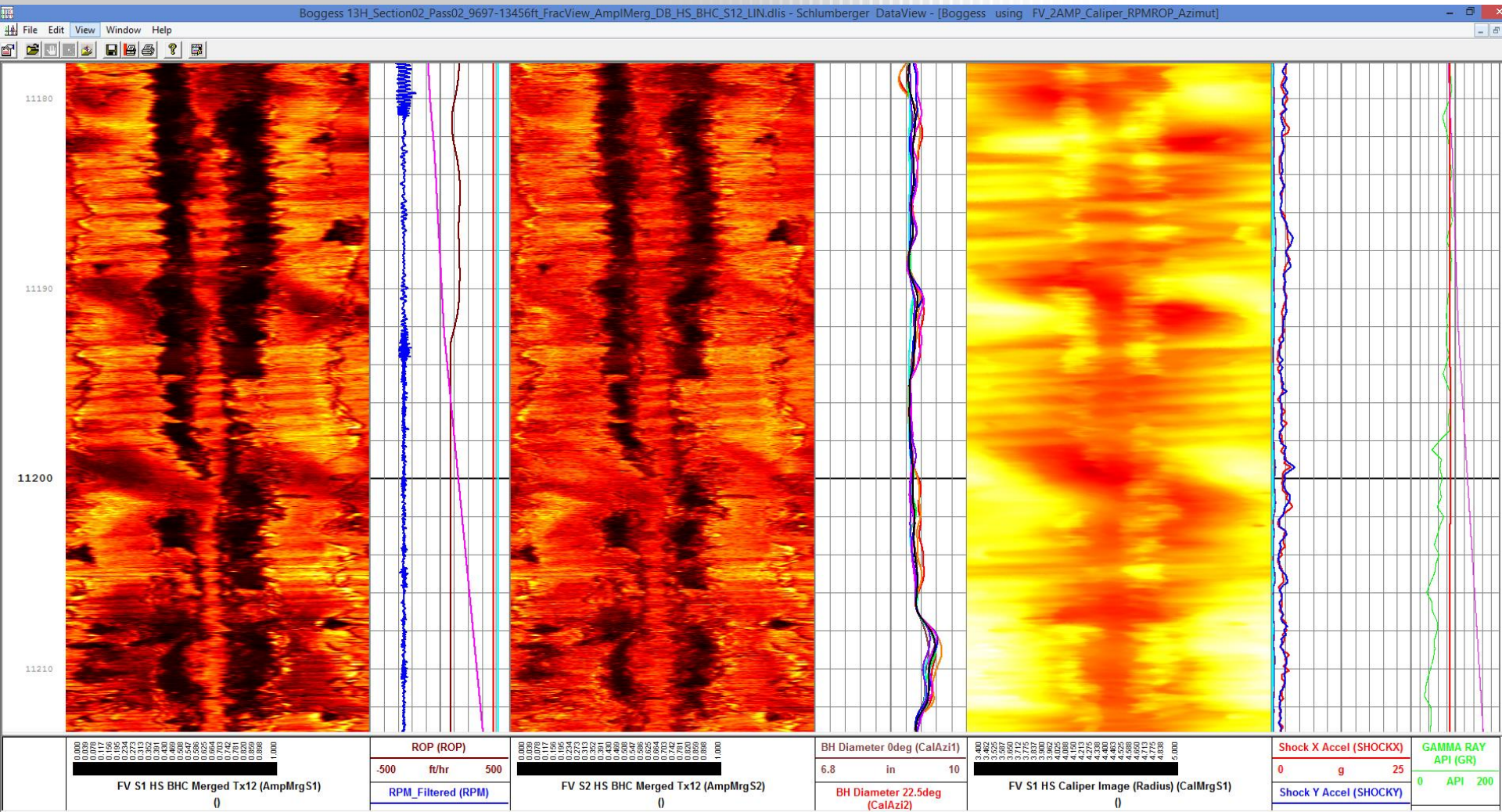


NEE_Bogges_13H- Job Summary. Section02. Pass02. BHC HS S1 vs S2

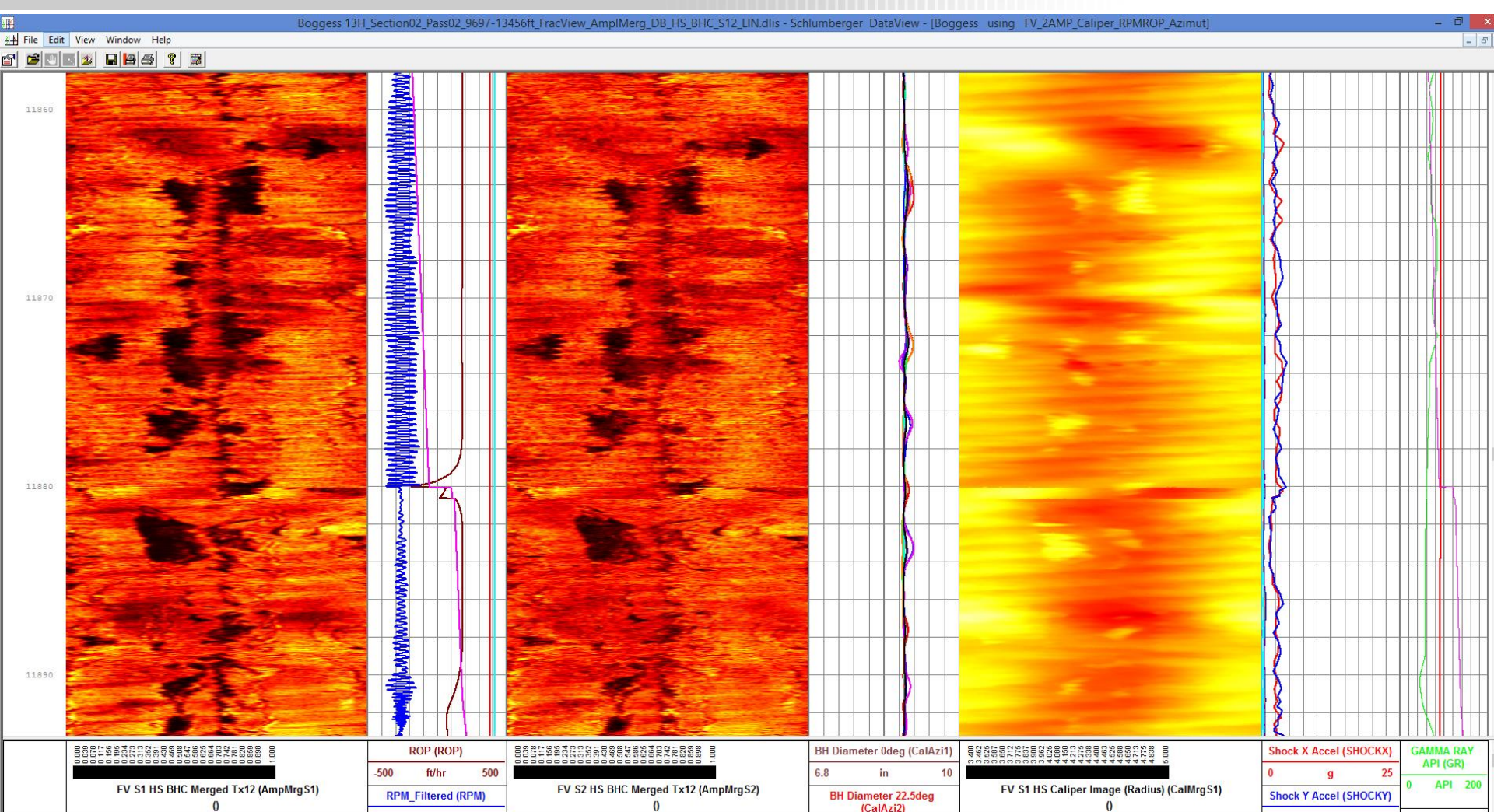


NE_Bogges_13H- Job Summary.

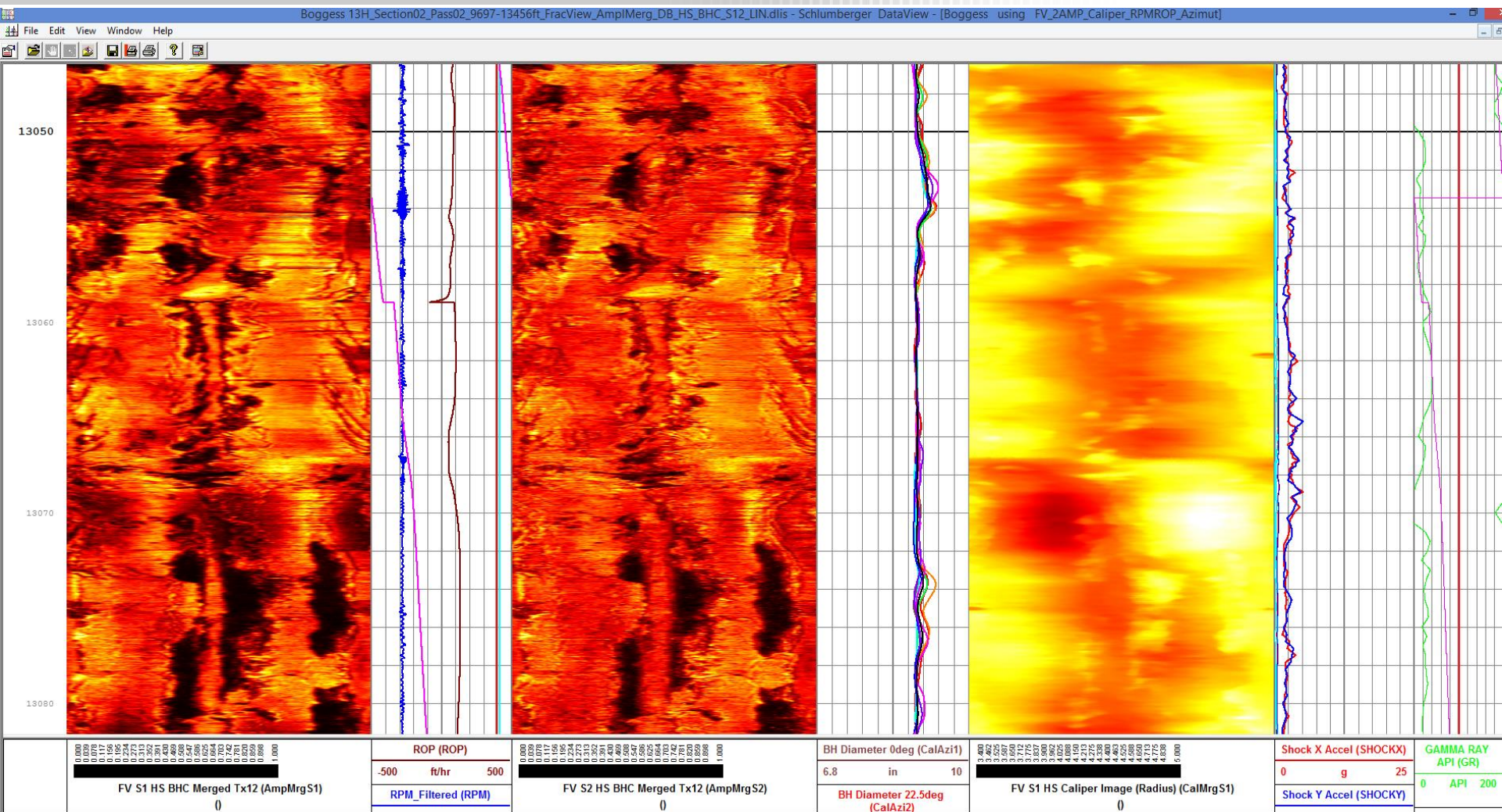
Section02. Pass02. BHC HS S1 vs S2



NNE_Bogges_13H– Job Summary. Section02. Pass02. BHC HS S1 vs S2

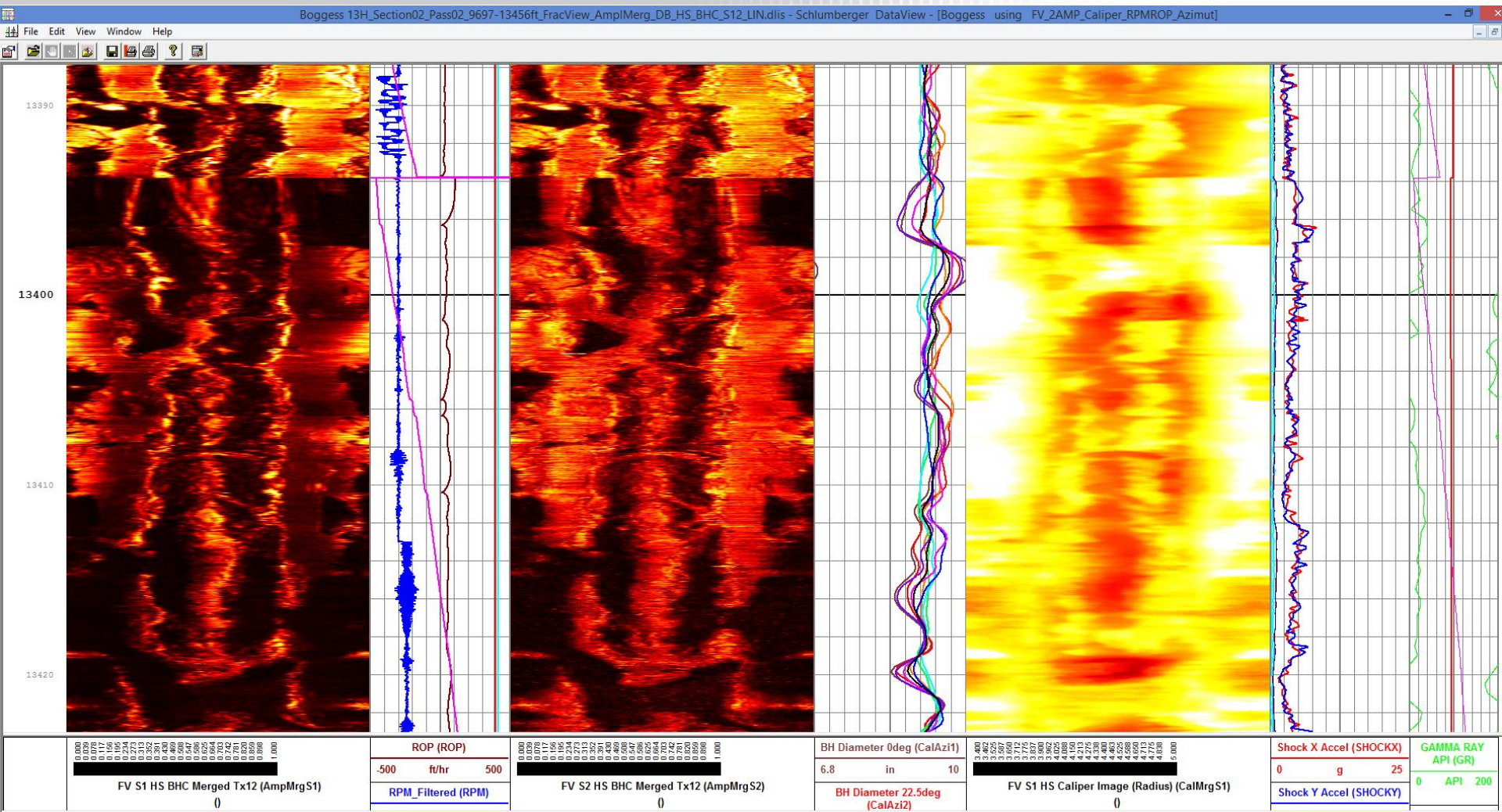


NNE_Boggess_13H– Job Summary. Section02. Pass02. BHC HS S1 vs S2



NE_Bogges_13H- Job Summary.

Section02. Pass02. BHC HS S1 vs S2





Thank You