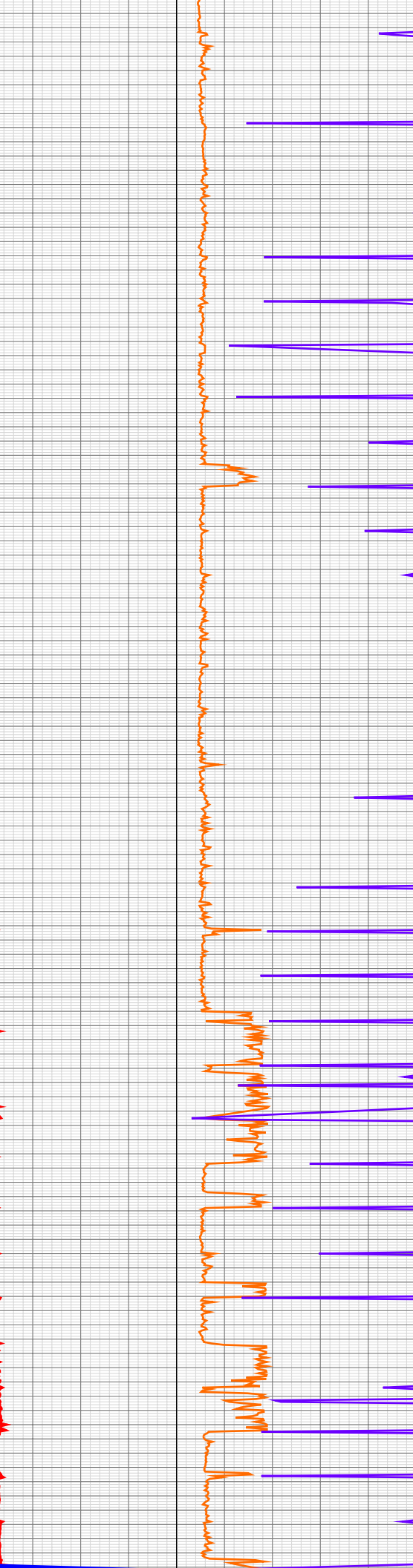




03:07 740  
03:28 760  
03:33 780  
03:48 800  
04:03 820  
04:08 840  
04:23 860  
04:38 880  
04:43 900  
05:02 920  
05:09 940  
05:28 960  
05:43 980  
05:50 1000  
06:05 1020  
06:10 1040  
07:10 1060  
07:29 1080  
07:37 1100  
07:57 1120  
08:16 1140  
08:25 1160  
08:43 1180  
09:05 1200  
09:15 1220  
09:34 1240  
09:55 1260  
10:04 1280  
10:23 1300  
10:29 1320  
10:48 1340  
11:08 1360  
11:14 1380  
11:37 1400  
12:01 1420  
12:07 1440  
12:24 1460  
12:41 1480  
12:48 1500  
13:07 1520  
13:15 1540  
14:19 1560  
14:37 1580  
14:45 1600  
15:06 1620  
15:12 1640  
15:30 1660  
15:51 1680  
15:58 1700  
16:20 1720  
16:42 1740  
16:50 1760  
17:08 1780  
17:27 1800  
17:32 1820



Alarm Device Available  
530.03ft: BIT DEPTH CHANGED TO 433.2 FEET  
530.03ft: RIGALARM: No PVT Rig Alarm Device Available  
530.03ft: ZWOB from SideKick sk-06-03-3887  
530.03ft: BIT DEPTH CHANGED TO 503.4 FEET  
532.11ft: ZWOB from SideKick sk-06-03-3887  
566.00ft: Connection at 566.5  
597.74ft: Connection at 598.4  
597.74ft: RIGALARM: No PVT Rig Alarm Device Available  
627.17ft: Connection at 629.8  
658.76ft: Connection at 661.4  
660.35ft: ZWOB from SideKick sk-06-03-3887  
691.51ft: Connection at 692.8  
722.38ft: Connection at 724.0  
753.40ft: Connection at 755.3  
753.40ft: ZWOB from SideKick sk-06-03-3887  
783.40ft: Connection at 787.0  
815.57ft: Connection at 818.8  
848.17ft: Connection at 850.6  
848.17ft: ZWOB from SideKick sk-06-03-3887  
879.33ft: Connection at 882.1  
908.76ft: Connection at 913.8  
941.65ft: Connection at 945.4  
941.65ft: ZWOB from SideKick sk-06-03-3887  
972.81ft: Connection at 977.1  
973.09ft: IN TALLY: HOLE DEPTH SET TO 977.1  
1007.00ft: Connection at 1009.0  
1040.27ft: Connection at 1040.7  
1040.27ft: CIRCULATE AND SURVEY  
1040.27ft: SURVEY @ 999' INC 0.1 AZ 345.4  
1040.27ft: ZWOB from SideKick sk-06-03-3887  
1068.55ft: RIGALARM: No PVT Rig Alarm Device Available  
1071.43ft: Connection at 1072.3  
1102.30ft: Connection at 1103.7  
1102.30ft: ZWOB from SideKick sk-06-03-3887  
1133.18ft: Connection at 1135.1  
1165.06ft: Connection at 1167.0  
1196.07ft: Connection at 1198.2  
1196.07ft: ZWOB from SideKick sk-06-03-3887  
1227.23ft: Connection at 1229.4  
1258.10ft: Connection at 1261.0  
1258.10ft: ZWOB from SideKick sk-06-03-3887  
1289.40ft: Connection at 1292.8  
1321.14ft: Connection at 1324.4  
1321.14ft: ZWOB from SideKick sk-06-03-3887  
1352.59ft: Connection at 1356.1  
1352.59ft: ZWOB from SideKick sk-06-03-3887  
1383.75ft: Connection at 1387.7  
1383.75ft: ZWOB from SideKick sk-06-03-3887  
1414.76ft: Connection at 1419.5  
1446.78ft: Connection at 1451.3  
1446.78ft: ZWOB from SideKick sk-06-03-3887  
1508.67ft: Connection at 1514.4  
1508.67ft: ZWOB from SideKick sk-06-03-3887  
1508.67ft: IN TALLY: HOLE DEPTH SET TO 1514.4  
1517.24ft: Connection at 1514.4  
1532.68ft: RIGALARM: No PVT Rig Alarm Device Available  
1546.53ft: CIRCULATE AND SURVEY  
1546.53ft: Connection at 1546.1  
1546.53ft: SURVEY @ 1504' INC 0.4 AZ 47.6  
1553.17ft: RIGALARM: No PVT Rig Alarm Device Available  
1577.83ft: Connection at 1577.8  
1577.83ft: ZWOB from SideKick sk-06-03-3887  
1609.28ft: Connection at 1609.6  
1609.28ft: ZWOB from SideKick sk-06-03-3887  
1640.87ft: Connection at 1641.4  
1672.03ft: Connection at 1673.0  
1703.33ft: Connection at 1704.5  
1703.33ft: ZWOB from SideKick sk-06-03-3887  
1734.78ft: Connection at 1736.0  
1765.80ft: Connection at 1767.8  
1797.24ft: Connection at 1799.4  
1797.24ft: ZWOB from SideKick sk-06-03-3887  
1828.69ft: Connection at 1831.1  
1828.69ft: IN TALLY: HOLE DEPTH SET TO 1831.1  
1840.89ft: TD 1845'  
1845.36ft: RIGALARM: No PVT Rig Alarm Device Available  
1845.36ft: RIGALARM: No PVT Rig Alarm Device Available

17:40 1840

Sep 21, 2015

07:51 1860

08:04 1880

08:13 1900

08:20 1920

08:31 1940

08:36 1960

08:46 1980

08:55 2000

08:59 2020

09:45 2040

09:55 2060

10:00 2080

10:11 2100

10:16 2120

10:26 2140

10:37 2160

10:42 2180

10:52 2200

11:08 2220

11:13 2240

11:32 2260

11:41 2280

11:45 2300

12:01 2320

12:09 2340

12:14 2360

12:23 2380

12:28 2400

12:39 2420

12:49 2440

12:53 2460

13:03 2480

13:13 2500

13:18 2520

14:16 2540

14:21 2560

14:33 2580

14:45 2600

14:50 2620

15:03 2640

15:15 2660

15:20 2680

15:32 2700

15:41 2720

15:46 2740

15:58 2760

16:04 2780

16:18 2800

16:29 2820

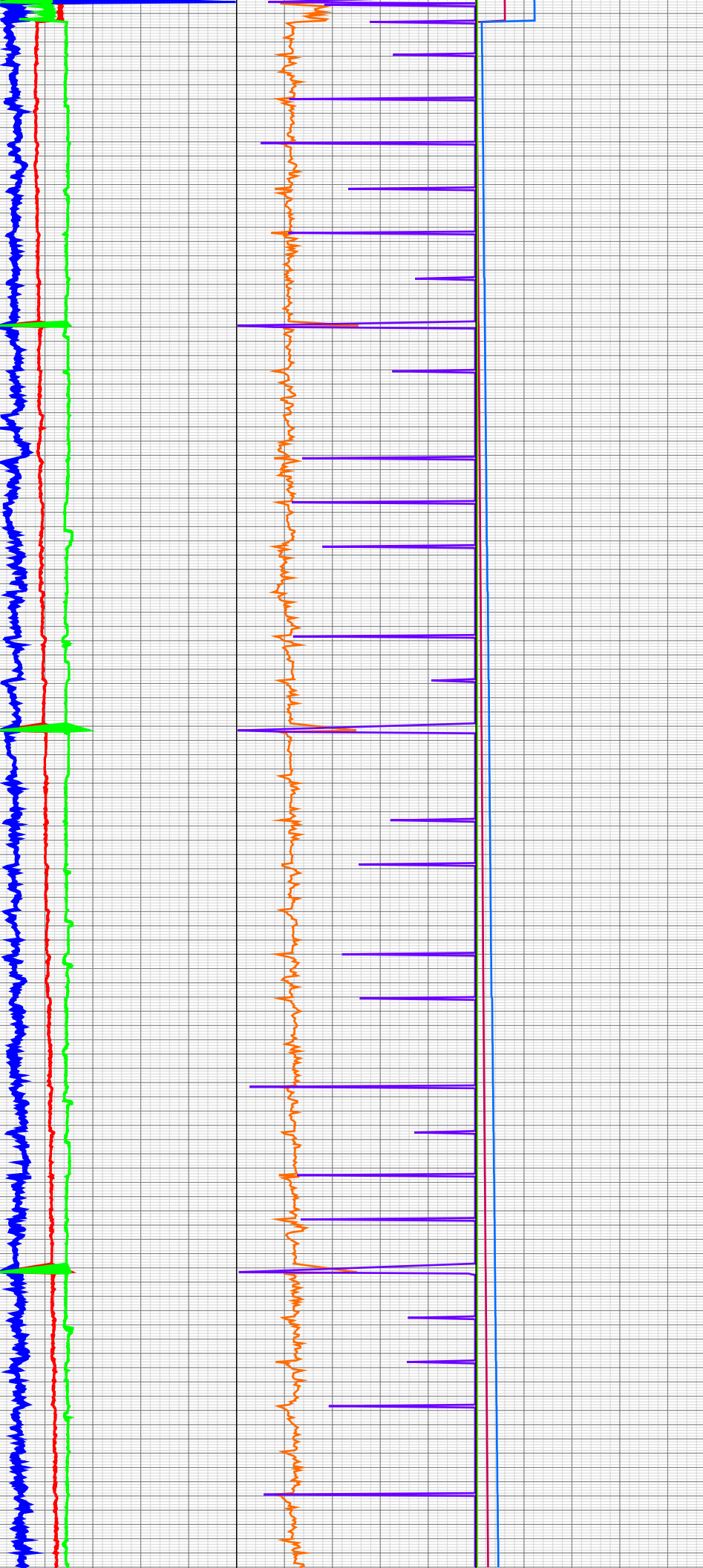
16:35 2840

16:46 2860

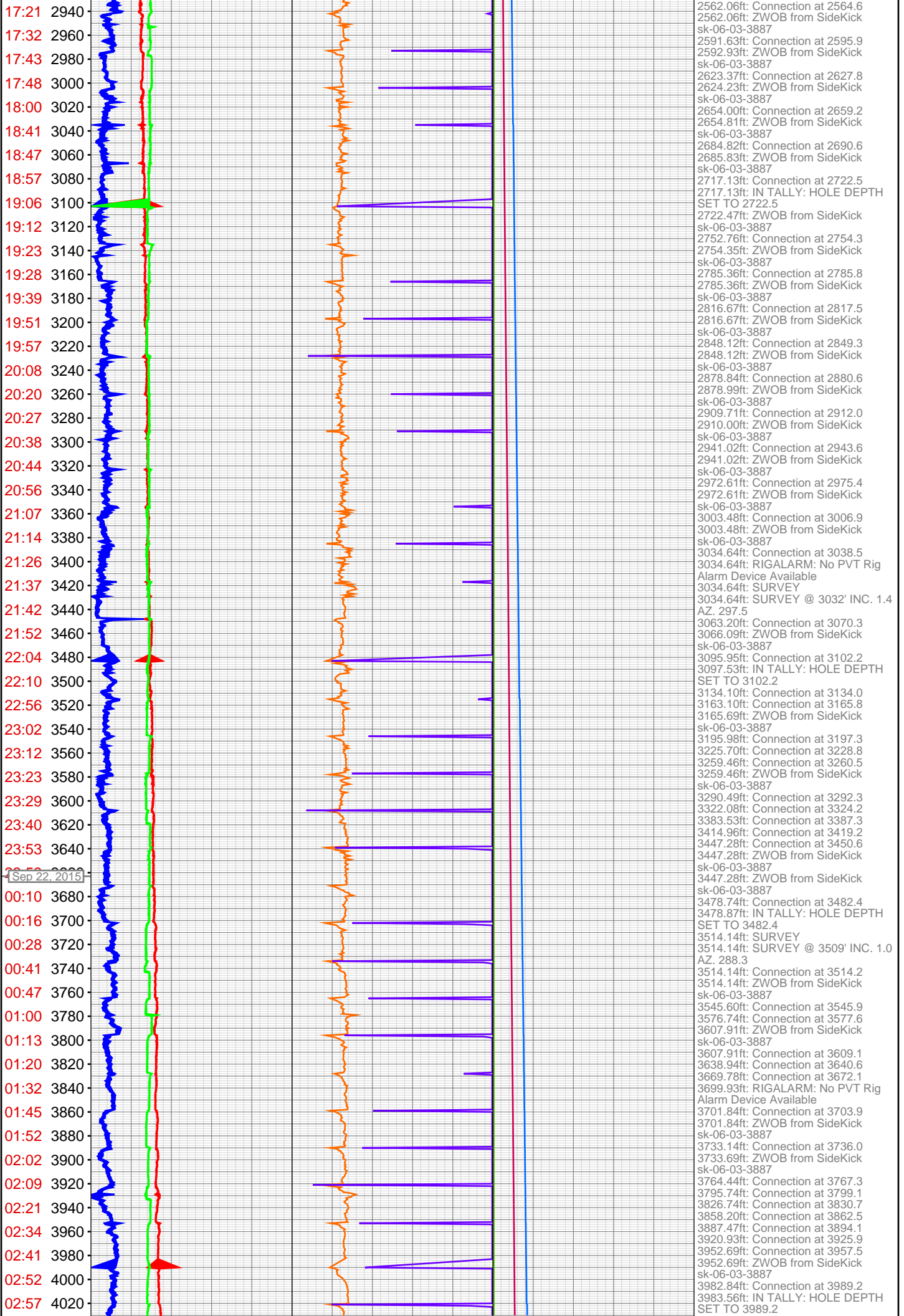
16:58 2880

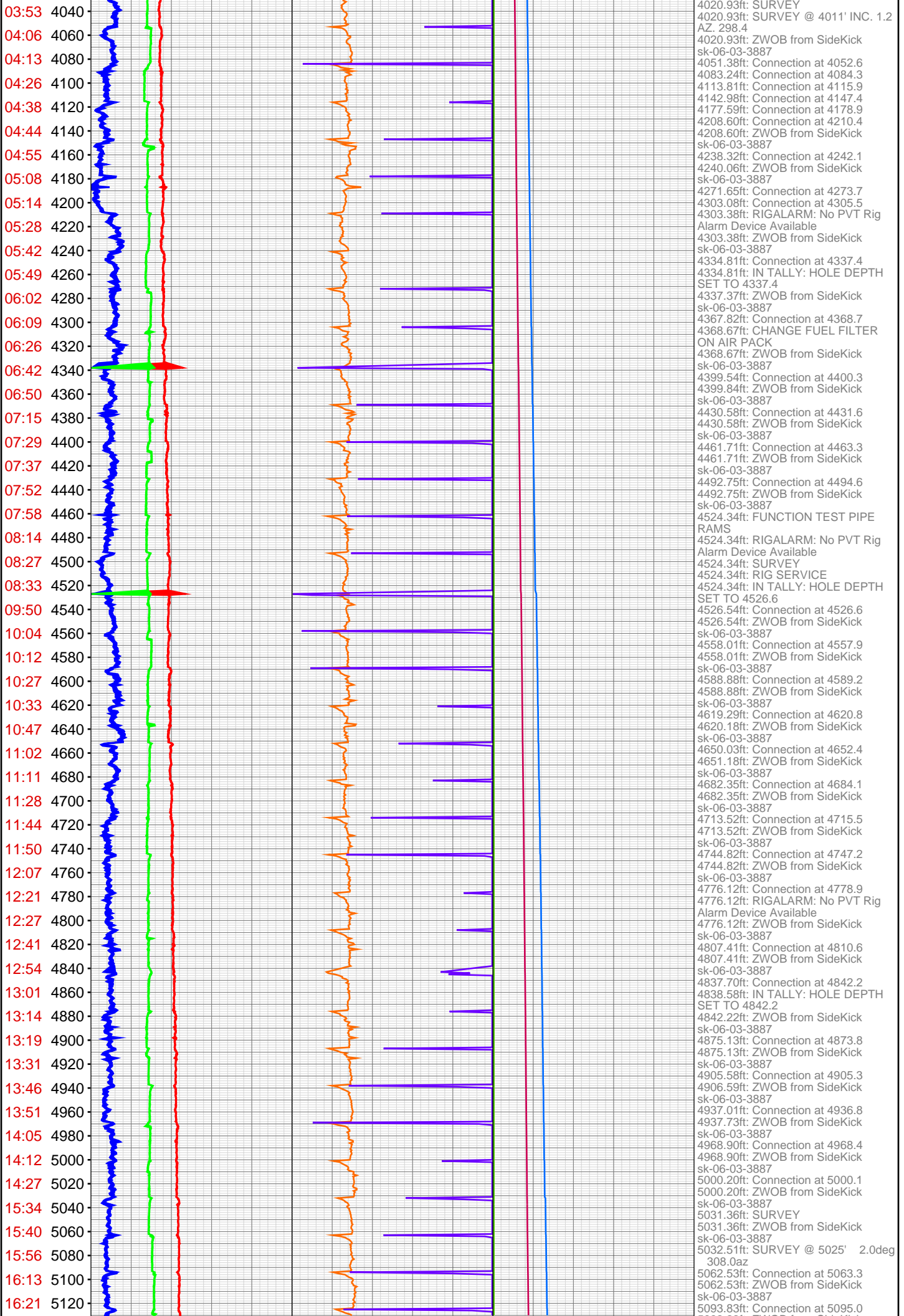
17:04 2900

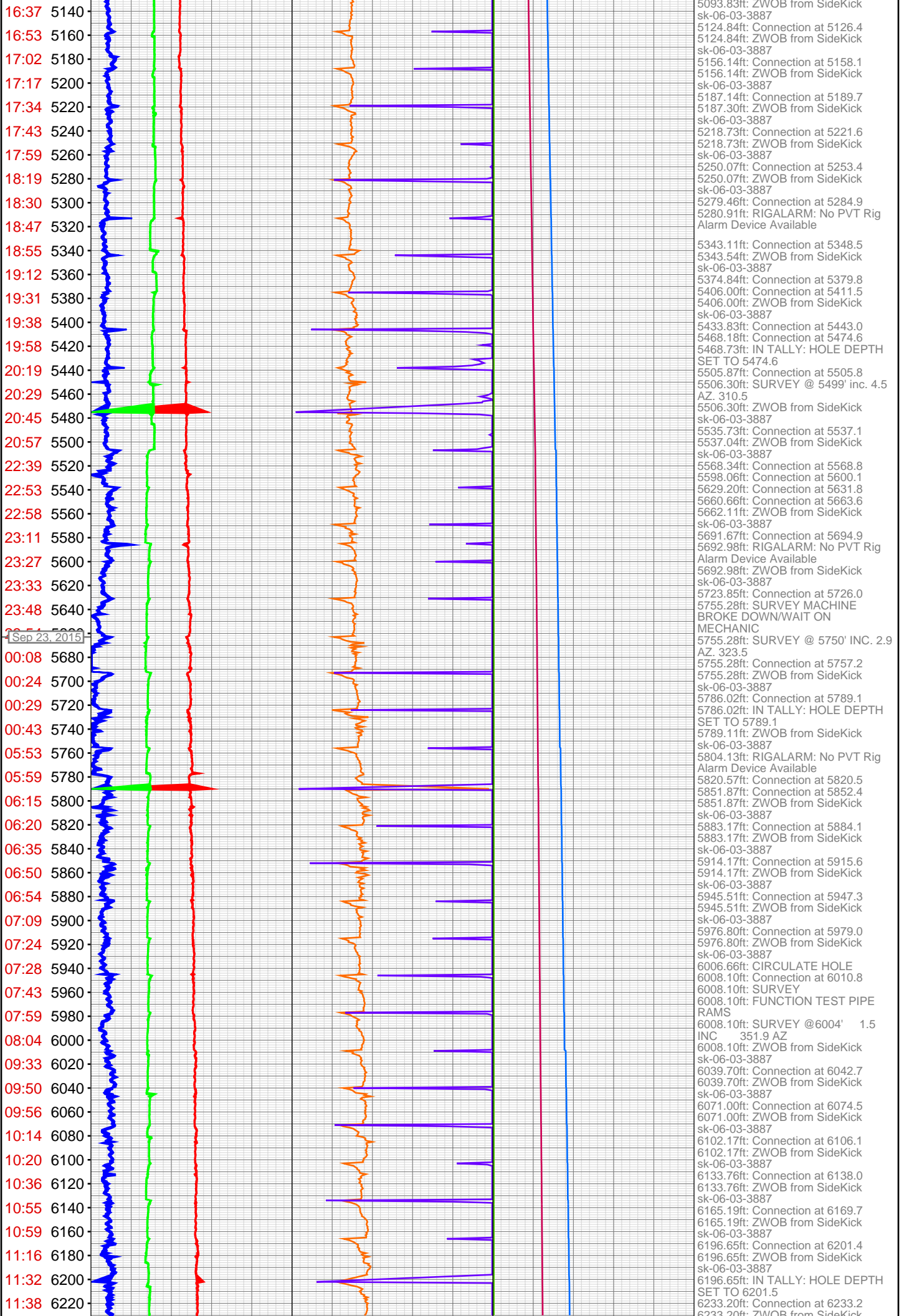
17:16 2920



1845.36ft: RIGALARM: No PVT Rig  
 Alarm Device Available  
 1845.36ft: WOC  
 1845.36ft: RIGALARM: No PVT Rig  
 Alarm Device Available  
 1845.36ft: RIGALARM: No PVT Rig  
 Alarm Device Available  
 1845.36ft: RIGALARM: No PVT Rig  
 Alarm Device Available  
 1845.36ft: RIGALARM: No PVT Rig  
 Alarm Device Available  
 1845.36ft: BIT HOURS CHANGED  
 FROM 12 TO 0  
 1845.36ft: BIT DEPTH CHANGED TO  
 1706.6 FEET  
 1845.36ft: ZWOB from SideKick  
 sk-06-03-3887  
 1845.36ft: ZWOB from SideKick  
 sk-06-03-3887  
 1845.36ft: RIGALARM: No PVT Rig  
 Alarm Device Available  
 1845.36ft: RIGALARM: No PVT Rig  
 Alarm Device Available  
 1845.36ft: RIGALARM: No PVT Rig  
 Alarm Device Available  
 1845.36ft: RIGALARM: No PVT Rig  
 Alarm Device Available  
 1845.36ft: RIGALARM: No PVT Rig  
 Alarm Device Available  
 1845.36ft: ZWOB from SideKick  
 sk-06-03-3887  
 1845.36ft: BIT DEPTH CHANGED TO  
 1836.9 FEET  
 1868.35ft: Connection at 1868.6  
 1868.35ft: ZWOB from SideKick  
 sk-06-03-3887  
 1899.80ft: Connection at 1900.4  
 1899.80ft: ZWOB from SideKick  
 sk-06-03-3887  
 1930.52ft: Connection at 1931.8  
 1930.95ft: ZWOB from SideKick  
 sk-06-03-3887  
 1962.40ft: Connection at 1963.7  
 1962.55ft: ZWOB from SideKick  
 sk-06-03-3887  
 1992.12ft: Connection at 1995.5  
 1993.99ft: ZWOB from SideKick  
 sk-06-03-3887  
 2025.30ft: Connection at 2027.2  
 2025.30ft: SURVEY @ 2021' .2deg  
 308.3az  
 2025.30ft: ZWOB from SideKick  
 sk-06-03-3887  
 2056.17ft: Connection at 2058.6  
 2056.17ft: IN TALLY: HOLE DEPTH  
 SET TO 2058.6  
 2058.63ft: ZWOB from SideKick  
 sk-06-03-3887  
 2090.22ft: Connection at 2090.3  
 2090.37ft: ZWOB from SideKick  
 sk-06-03-3887  
 2121.09ft: Connection at 2121.7  
 2121.09ft: ZWOB from SideKick  
 sk-06-03-3887  
 2150.23ft: Connection at 2152.8  
 2151.67ft: ZWOB from SideKick  
 sk-06-03-3887  
 2182.26ft: Connection at 2184.3  
 2182.69ft: ZWOB from SideKick  
 sk-06-03-3887  
 2213.13ft: Connection at 2215.8  
 2213.70ft: ZWOB from SideKick  
 sk-06-03-3887  
 2245.15ft: Connection at 2247.6  
 2245.15ft: ZWOB from SideKick  
 sk-06-03-3887  
 2276.60ft: Connection at 2279.4  
 2276.60ft: ZWOB from SideKick  
 sk-06-03-3887  
 2306.46ft: Connection at 2310.8  
 2307.33ft: ZWOB from SideKick  
 sk-06-03-3887  
 2338.48ft: Connection at 2342.5  
 2338.48ft: IN TALLY: HOLE DEPTH  
 SET TO 2342.5  
 2342.50ft: ZWOB from SideKick  
 sk-06-03-3887  
 2371.06ft: RIGALARM: No PVT Rig  
 Alarm Device Available  
 2373.51ft: Connection at 2374.0  
 2374.09ft: ZWOB from SideKick  
 sk-06-03-3887  
 2405.39ft: Connection at 2405.7  
 2405.39ft: ZWOB from SideKick  
 sk-06-03-3887  
 2436.12ft: Connection at 2437.4  
 2436.70ft: ZWOB from SideKick  
 sk-06-03-3887  
 2468.15ft: Connection at 2469.4  
 2468.15ft: ZWOB from SideKick  
 sk-06-03-3887  
 2499.45ft: Connection at 2501.2  
 2499.45ft: ZWOB from SideKick  
 sk-06-03-3887  
 2530.47ft: Connection at 2532.8  
 2530.47ft: ZWOB from SideKick  
 sk-06-03-3887  
 2531.62ft: SURVEY @ 2526' INC .8  
 AZ 290.7







5093.83ft: ZWOB from SideKick  
 sk-06-03-3887  
 5124.84ft: Connection at 5126.4  
 5124.84ft: ZWOB from SideKick  
 sk-06-03-3887  
 5156.14ft: Connection at 5158.1  
 5156.14ft: ZWOB from SideKick  
 sk-06-03-3887  
 5187.14ft: Connection at 5189.7  
 5187.30ft: ZWOB from SideKick  
 sk-06-03-3887  
 5218.73ft: Connection at 5221.6  
 5218.73ft: ZWOB from SideKick  
 sk-06-03-3887  
 5250.07ft: Connection at 5253.4  
 5250.07ft: ZWOB from SideKick  
 sk-06-03-3887  
 5279.46ft: Connection at 5284.9  
 5280.91ft: RIGALARM: No PVT Rig  
 Alarm Device Available  
  
 5343.11ft: Connection at 5348.5  
 5343.54ft: ZWOB from SideKick  
 sk-06-03-3887  
 5374.84ft: Connection at 5379.8  
 5406.00ft: Connection at 5411.5  
 5406.00ft: ZWOB from SideKick  
 sk-06-03-3887  
 5433.83ft: Connection at 5443.0  
 5468.18ft: Connection at 5474.6  
 5468.73ft: IN TALLY: HOLE DEPTH  
 SET TO 5474.6  
 5505.87ft: Connection at 5505.8  
 5506.30ft: SURVEY @ 5499' inc. 4.5  
 AZ. 310.5  
 5506.30ft: ZWOB from SideKick  
 sk-06-03-3887  
 5535.73ft: Connection at 5537.1  
 5537.04ft: ZWOB from SideKick  
 sk-06-03-3887  
 5568.34ft: Connection at 5568.8  
 5598.06ft: Connection at 5600.1  
 5629.20ft: Connection at 5631.8  
 5660.66ft: Connection at 5663.6  
 5662.11ft: ZWOB from SideKick  
 sk-06-03-3887  
 5691.67ft: Connection at 5694.9  
 5692.98ft: RIGALARM: No PVT Rig  
 Alarm Device Available  
 5692.98ft: ZWOB from SideKick  
 sk-06-03-3887  
 5723.85ft: Connection at 5726.0  
 5755.28ft: SURVEY MACHINE  
 BROKE DOWN/WAIT ON  
 MECHANIC  
 5755.28ft: SURVEY @ 5750' INC. 2.9  
 AZ. 323.5  
 5755.28ft: Connection at 5757.2  
 5755.28ft: ZWOB from SideKick  
 sk-06-03-3887  
 5786.02ft: Connection at 5789.1  
 5786.02ft: IN TALLY: HOLE DEPTH  
 SET TO 5789.1  
 5789.11ft: ZWOB from SideKick  
 sk-06-03-3887  
 5804.13ft: RIGALARM: No PVT Rig  
 Alarm Device Available  
 5820.57ft: Connection at 5820.5  
 5851.87ft: Connection at 5852.4  
 5851.87ft: ZWOB from SideKick  
 sk-06-03-3887  
 5883.17ft: Connection at 5884.1  
 5883.17ft: ZWOB from SideKick  
 sk-06-03-3887  
 5914.17ft: Connection at 5915.6  
 5914.17ft: ZWOB from SideKick  
 sk-06-03-3887  
 5945.51ft: Connection at 5947.3  
 5945.51ft: ZWOB from SideKick  
 sk-06-03-3887  
 5976.80ft: Connection at 5979.0  
 5976.80ft: ZWOB from SideKick  
 sk-06-03-3887  
 6006.66ft: CIRCULATE HOLE  
 6008.10ft: Connection at 6010.8  
 6008.10ft: SURVEY  
 6008.10ft: FUNCTION TEST PIPE  
 RAMS  
 6008.10ft: SURVEY @6004' 1.5  
 INC 351.9 AZ  
 6008.10ft: ZWOB from SideKick  
 sk-06-03-3887  
 6039.70ft: Connection at 6042.7  
 6039.70ft: ZWOB from SideKick  
 sk-06-03-3887  
 6071.00ft: Connection at 6074.5  
 6071.00ft: ZWOB from SideKick  
 sk-06-03-3887  
 6102.17ft: Connection at 6106.1  
 6102.17ft: ZWOB from SideKick  
 sk-06-03-3887  
 6133.76ft: Connection at 6138.0  
 6133.76ft: ZWOB from SideKick  
 sk-06-03-3887  
 6165.19ft: Connection at 6169.7  
 6165.19ft: ZWOB from SideKick  
 sk-06-03-3887  
 6196.65ft: Connection at 6201.4  
 6196.65ft: ZWOB from SideKick  
 sk-06-03-3887  
 6196.65ft: IN TALLY: HOLE DEPTH  
 SET TO 6201.5  
 6233.20ft: Connection at 6233.2  
 6233.20ft: ZWOB from SideKick

