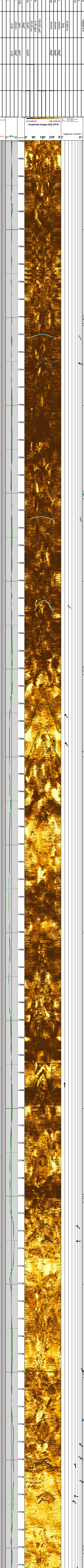
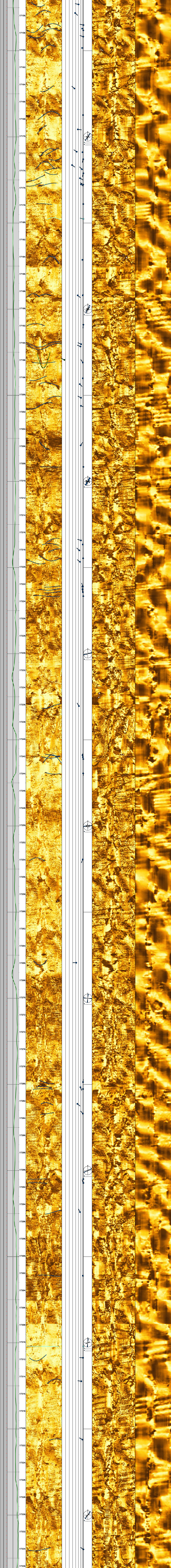


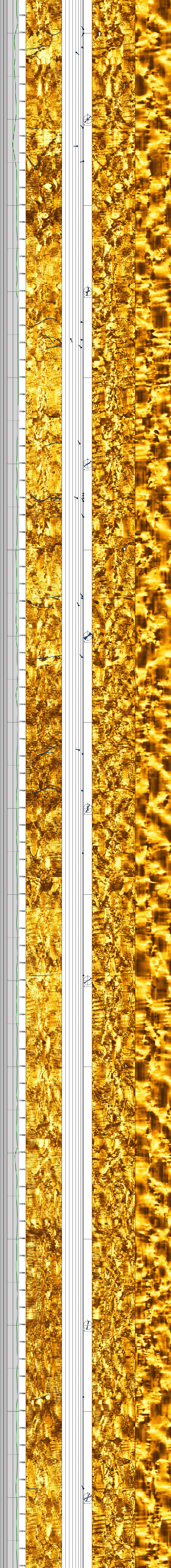
Field	Boggeess-9H
Operator	NorthEast Natural Energy
Block	
Country	USA
Other Services:	

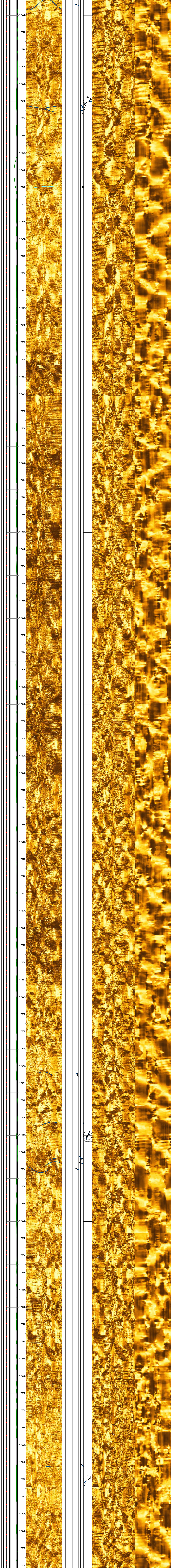
Country	USA
Operator	NNE
Well:	Boggeess-9H
Permanent Datum	
TD Driller - MD	
Drilling Measured From:	
LOCATION	
Elevations:	NONE
KB: ft	

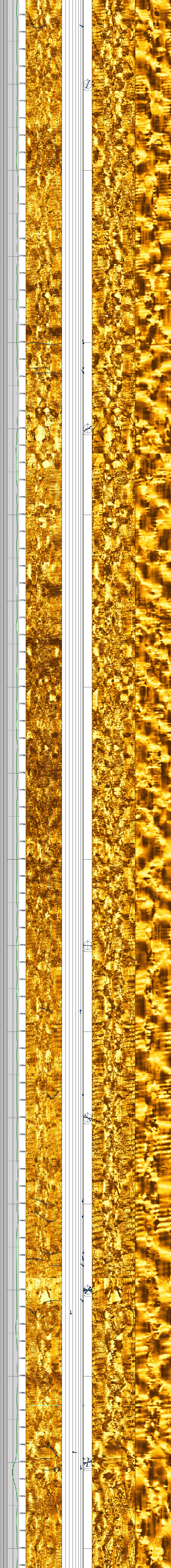
TD		
Top Log Int	5850.34 ft	
Base Log Int	19928.9 ft	
Top Picc Int		
Base Picc Int		
Bit Size	8.500 in	
MUD VTL	16/g	
RMI & Temp	ohmm	degF
RMI & Temp	ohmm	degF
RMC & Temp	ohmm	degF
DLT Shale	100.00 us/f	
RHOB Shale	2.40 g/cc	
PHIN Shale	30.00 pu	
GR Sh Matrix	GAPI	
BHT	degF	ppm
BHMT Stability	ohmm	degF
Rv & Temp	ohmm	degF
M and N	2.00	2.00
Analysis Loc		

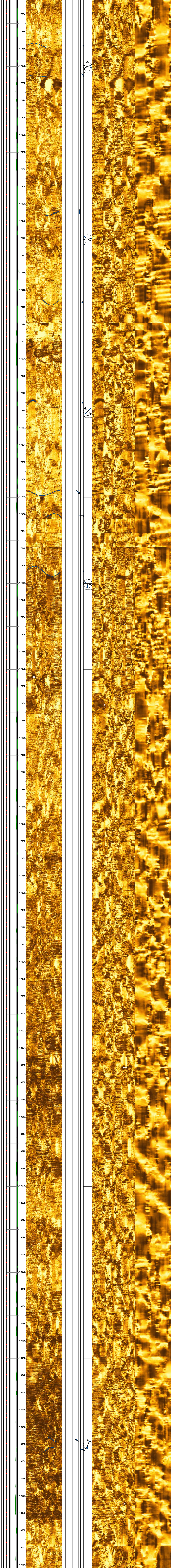




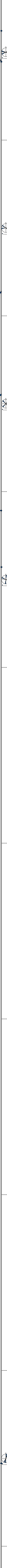


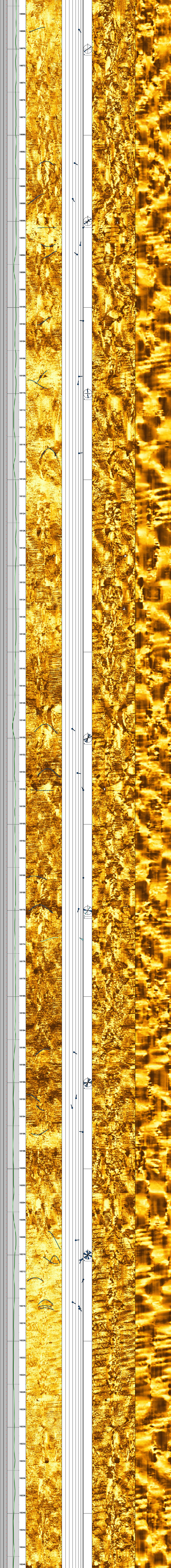


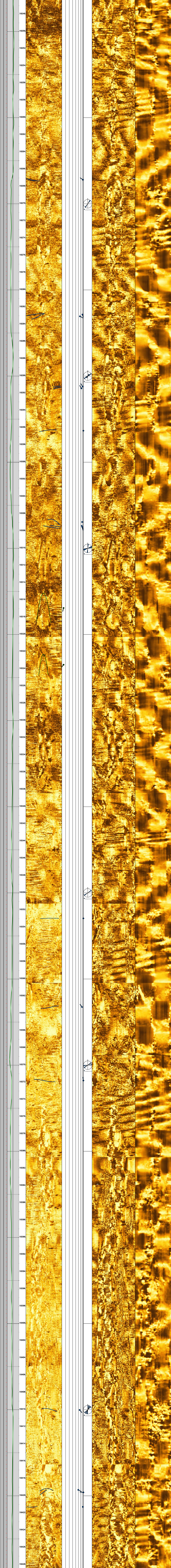




17884  
17886  
17888  
17890  
17892  
17894  
17896  
17898  
17900  
17902  
17904  
17906  
17908  
17910  
17912  
17914  
17916  
17918  
17920  
17922  
17924  
17926  
17928  
17930  
17932  
17934  
17936  
17938  
17940  
17942  
17944  
17946  
17948  
17950  
17952  
17954  
17956  
17958  
17960  
17962  
17964  
17966  
17968  
17970  
17972  
17974  
17976  
17978  
17980  
17982  
17984  
17986  
17988  
17990  
17992  
17994  
17996  
17998  
18000  
18002  
18004  
18006  
18008  
18010  
18012  
18014  
18016  
18018  
18020  
18022  
18024  
18026  
18028  
18030  
18032  
18034  
18036  
18038  
18040  
18042  
18044  
18046  
18048  
18050  
18052  
18054  
18056  
18058  
18060  
18062  
18064

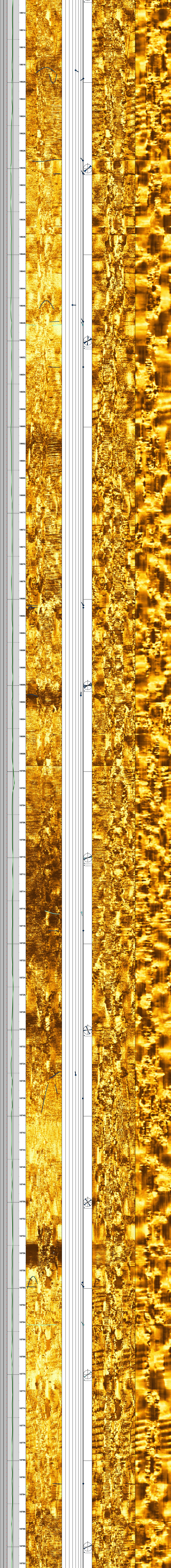


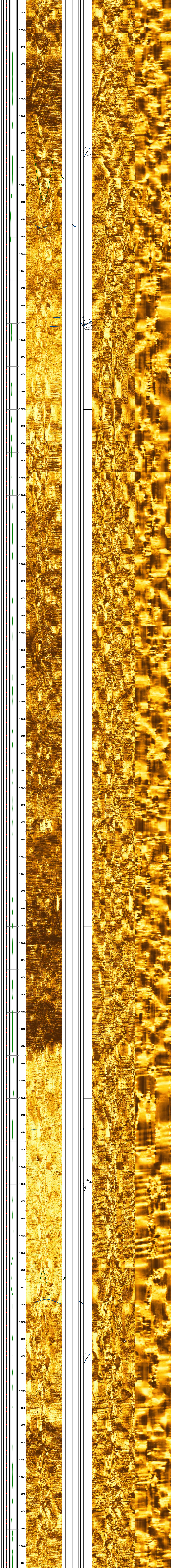


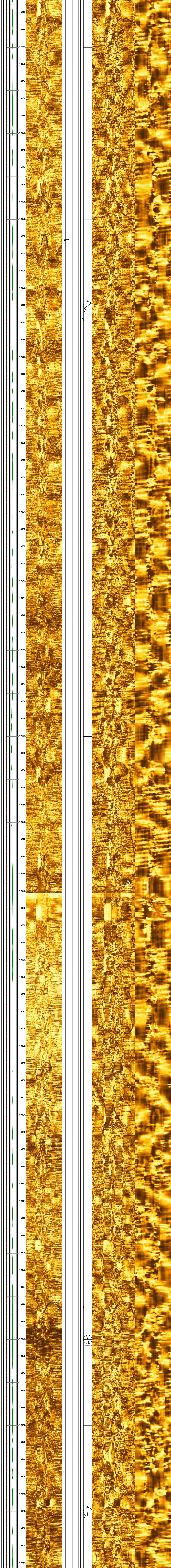












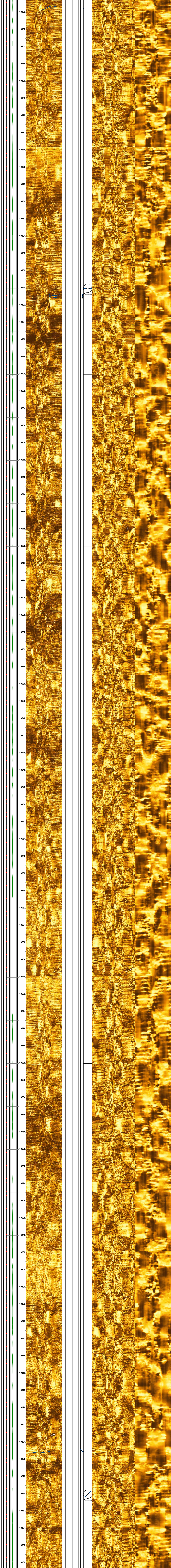
18976  
18978  
18980  
18982  
18984  
18986  
18988  
18990  
18992  
18994  
18996  
18998  
19000  
19002  
19004  
19006  
19008  
19010  
19012  
19014  
19016  
19018  
19020  
19022  
19024  
19026  
19028  
19030  
19032  
19034  
19036  
19038  
19040  
19042  
19044  
19046  
19048  
19050  
19052  
19054  
19056  
19058  
19060  
19062  
19064  
19066  
19068  
19070  
19072  
19074  
19076  
19078  
19080  
19082  
19084  
19086  
19088  
19090  
19092  
19094  
19096  
19098  
19100  
19102  
19104  
19106  
19108  
19110  
19112  
19114  
19116  
19118  
19120  
19122  
19124  
19126  
19128  
19130  
19132  
19134  
19136  
19138  
19140  
19142  
19144  
19146  
19148  
19150  
19152  
19154  
19156



19012

19126

19130



19158

19160

19162

19164

19166

19168

19170

19172

19174

19176

19178

19180

19182

19184

19186

19188

19190

19192

19194

19196

19198

19200

19202

19204

19206

19208

19210

19212

19214

19216

19218

19220

19222

19224

19226

19228

19230

19232

19234

19236

19238

19240

19242

19244

19246

19248

19250

19252

19254

19256

19258

19260

19262

19264

19266

19268

19270

19272

19274

19276

19278

19280

19282

19284

19286

19288

19290

19292

19294

19296

19298

19300

19302

19304

19306

19308

19310

19312

19314

19316

19318

19320

19322

19324

19326

19328

19330

19332

19334

19336

19338

