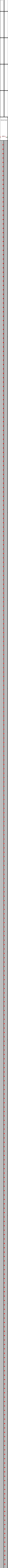
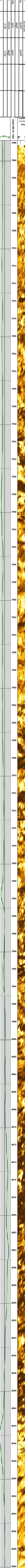
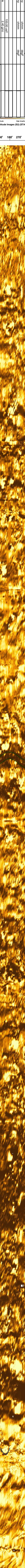
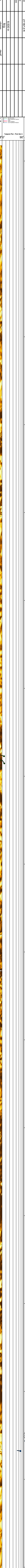
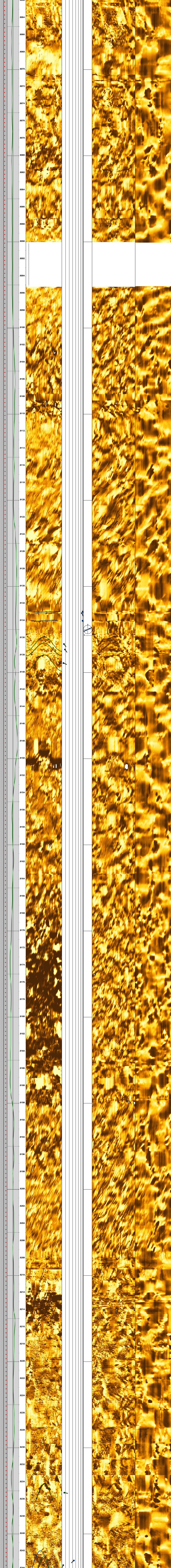


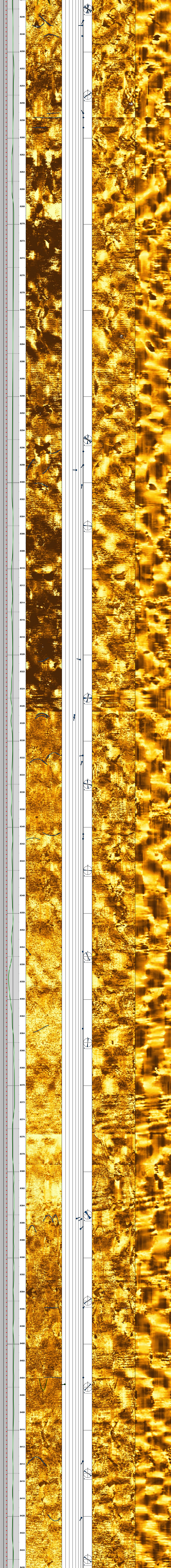
Field: Boggess-3H
 Operator: NorthEast Natural Energy
 Block: USA
 Country: USA
 Other Services:

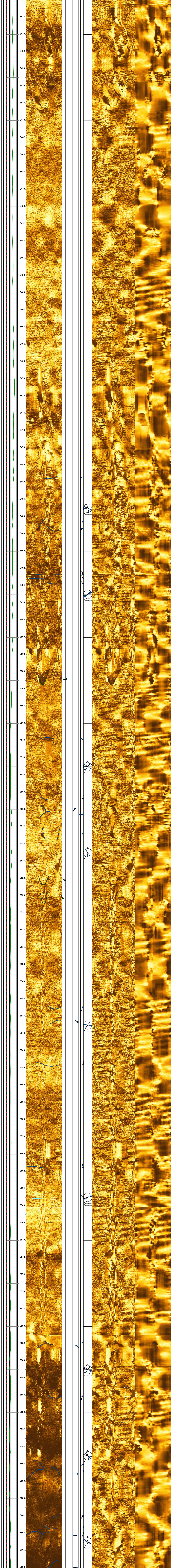
Country: USA
 Operator: NNE
 Well: Boggess-3H
 Location: Permanent Datum
 TD Offset: - MD
 Drilling Measured From: ft
 Elevation: NONE
 KB: ft

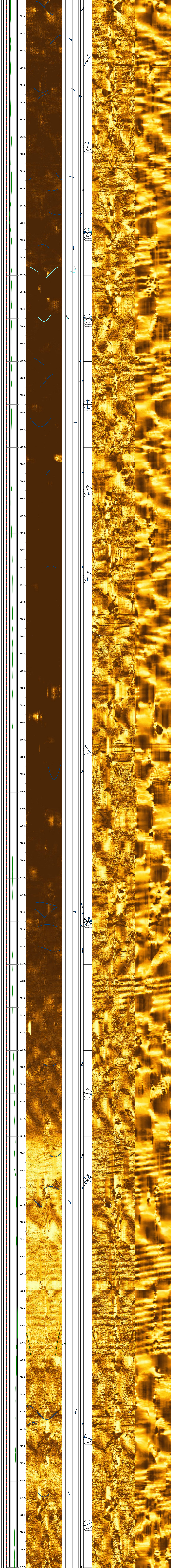
TD: 6045.15 ft
 Top Log Int: 21167.0 ft
 Base Log Int: 8.500 in
 Base Plot Int: 8.500 in
 Bit Size: 8.500 in
 MUD VTL: ohmm
 RMF & Temp: degF
 RMF & Temp: ohmm
 RMF & Temp: degF
 RMF & Temp: ohmm
 RMF & Temp: degF
 DLT State: 100.00 usF
 RHOB State: 2.40 g/cc
 PHIN State: 30.00 pu
 GR Sl Matrix: GAPI
 BHT: degF
 BHTM Stability: ppm
 RV & Temp: ohmm
 RV & Temp: degF
 M and N: 2.00
 Analysis Loc: 2.00

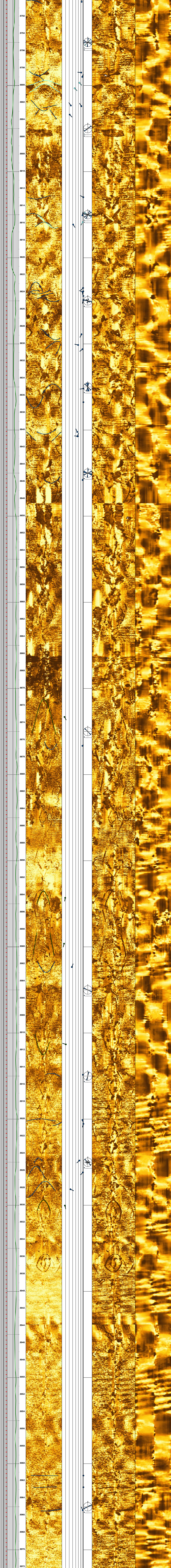


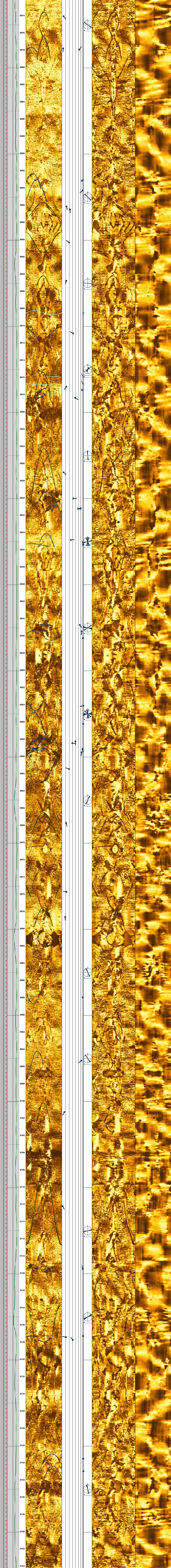


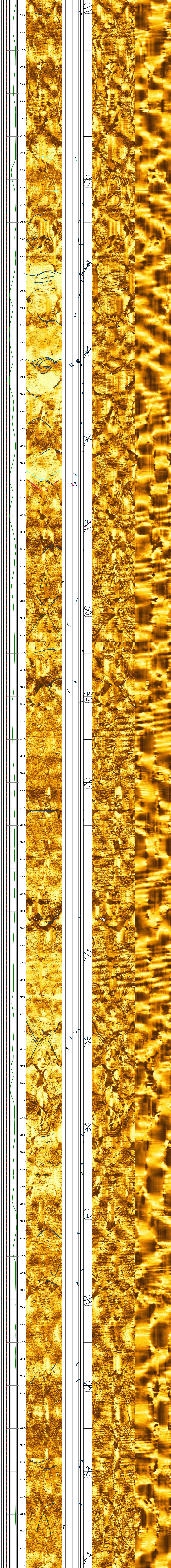


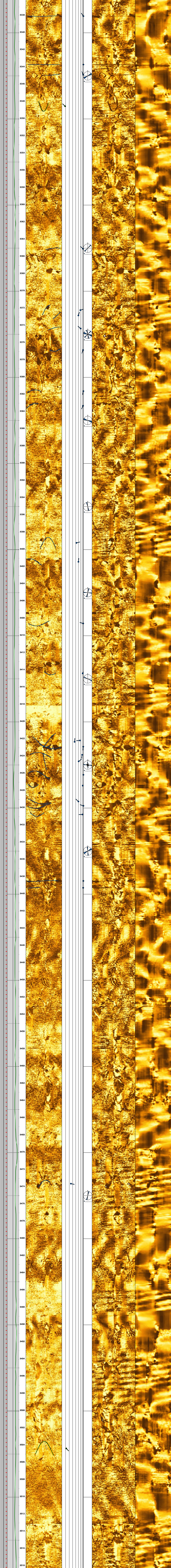


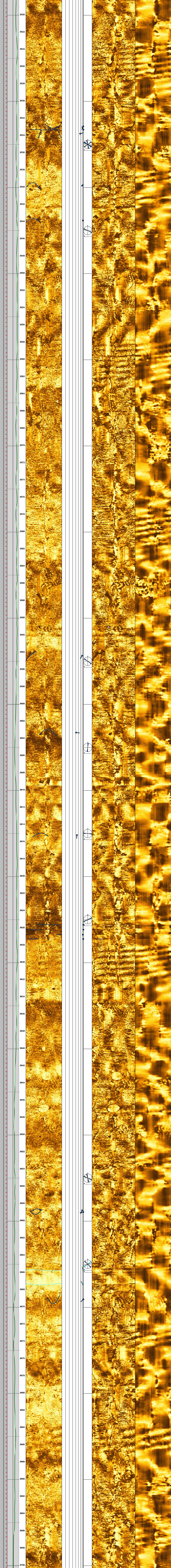


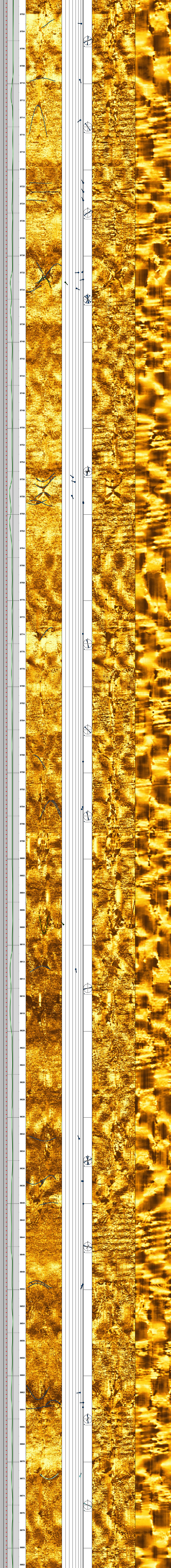


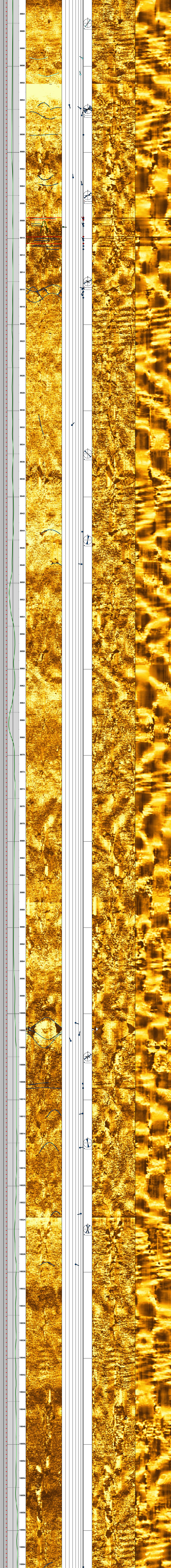


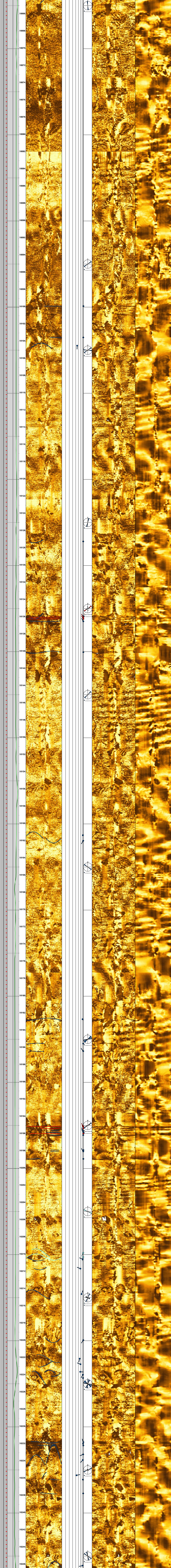


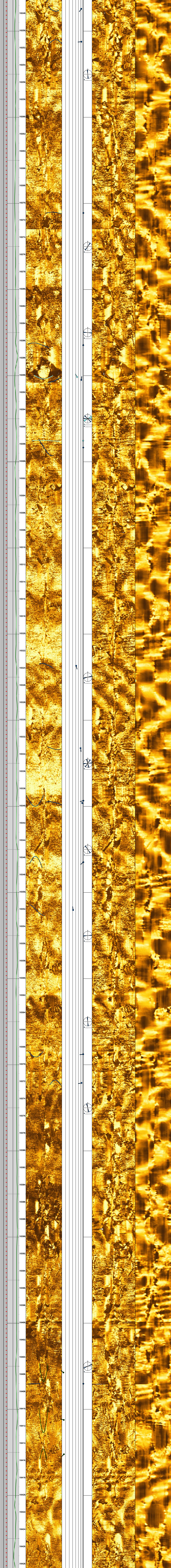


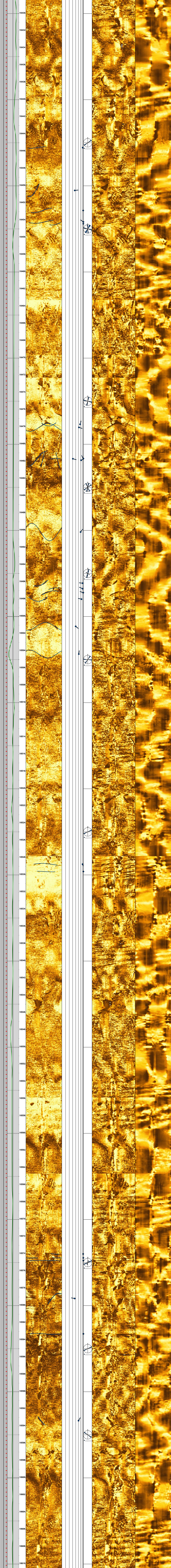


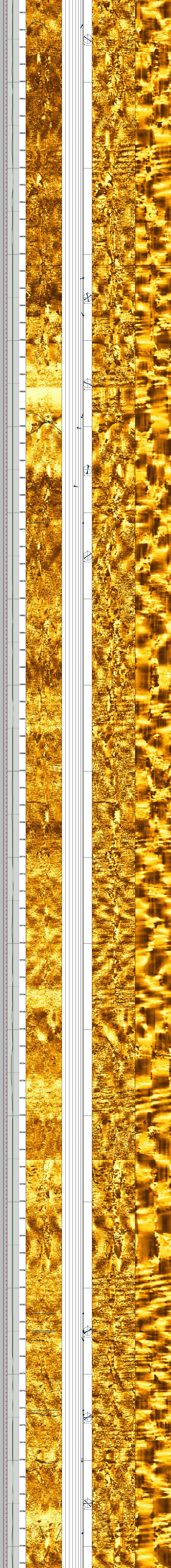


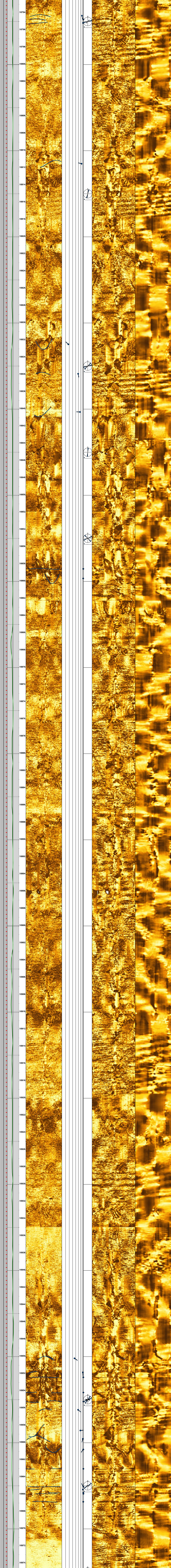


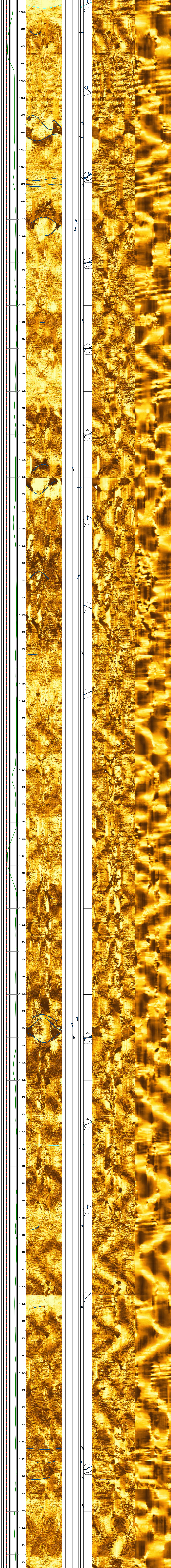


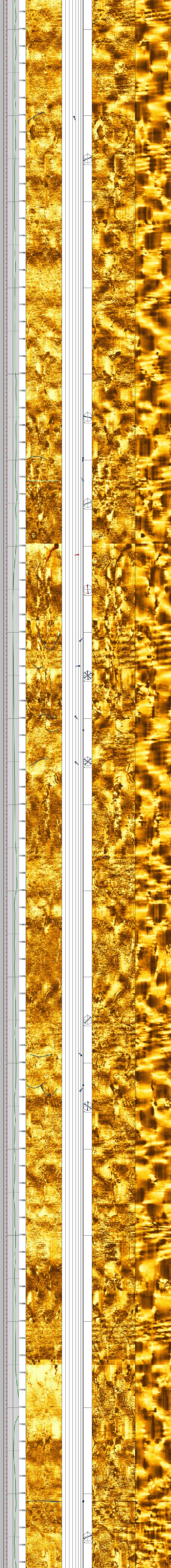


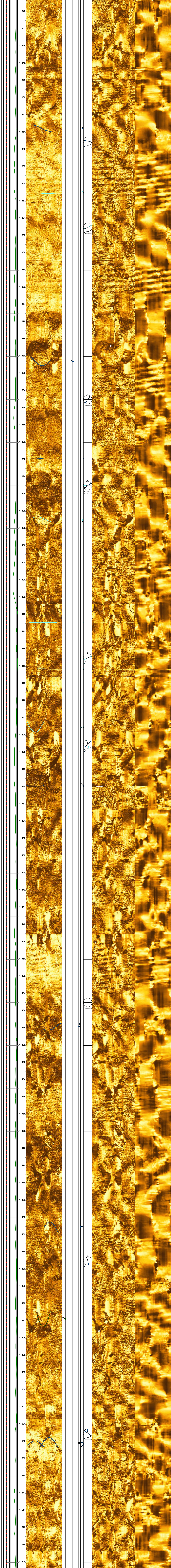


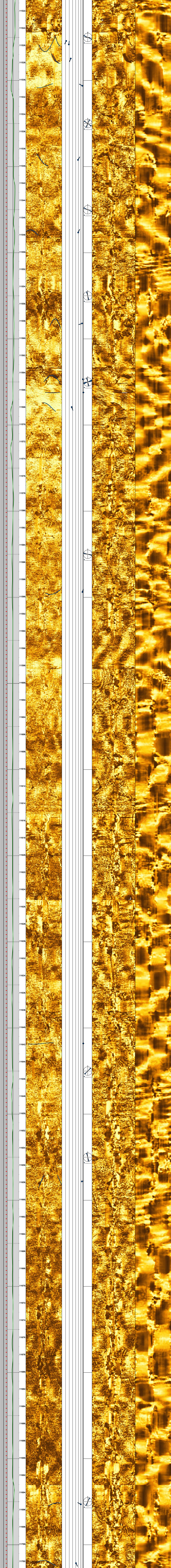


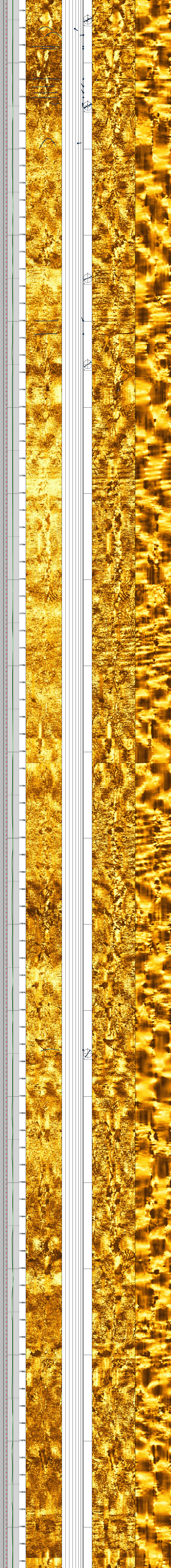


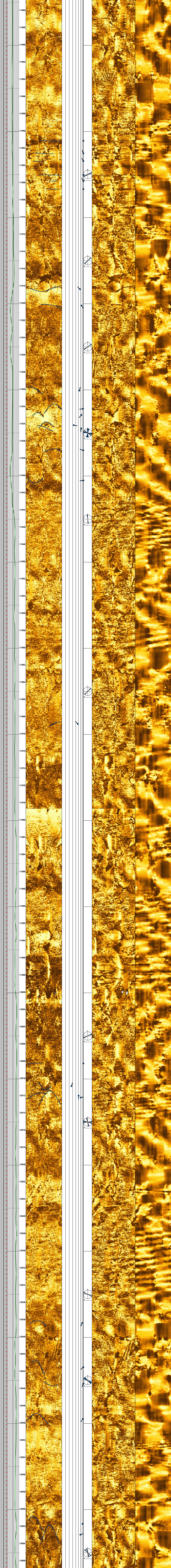


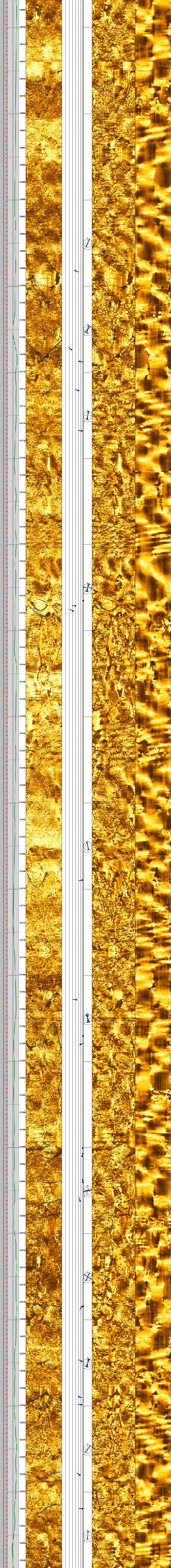


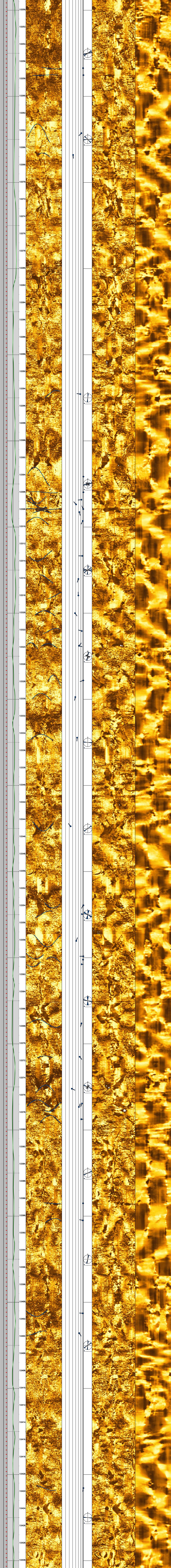


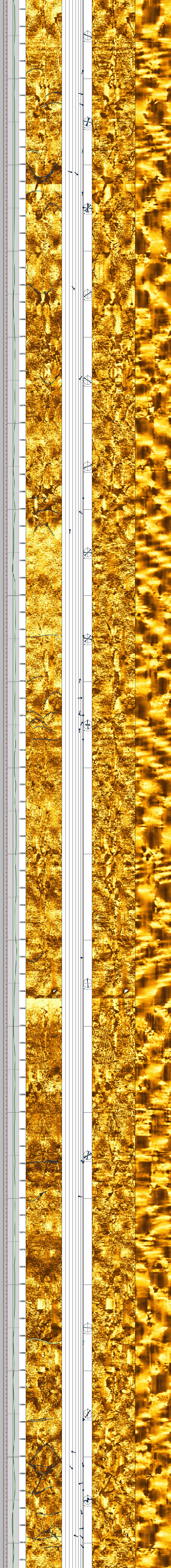


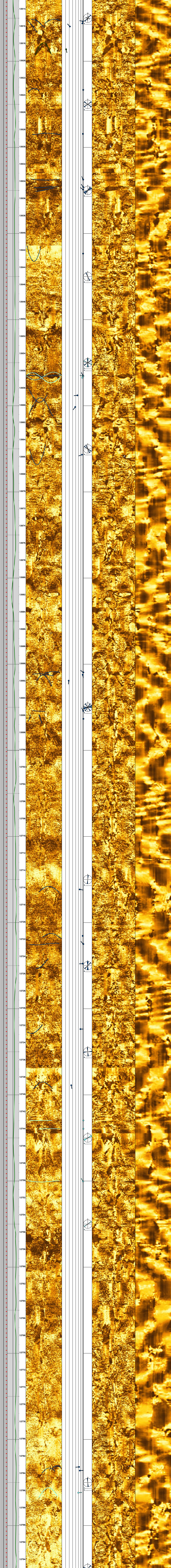


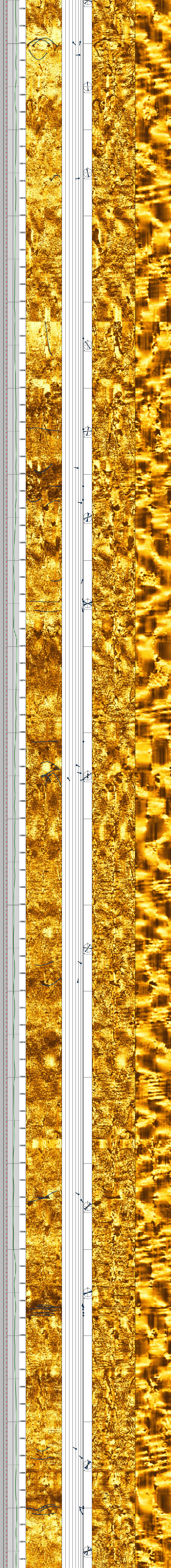


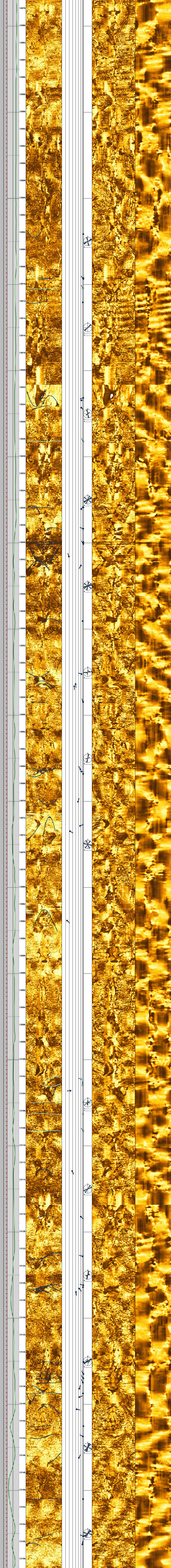












12978

12980

12982

12984

12986

12988

12990

12992

12994

12996

12998

13000

13002

13004

13006

13008

13010

13012

13014

13016

13018

13020

13022

13024

13026

13028

13030

13032

13034

13036

13038

13040

13042

13044

13046

13048

13050

13052

13054

13056

13058

13060

13062

13064

13066

13068

13070

13072

13074

13076

13078

13080

13082

13084

13086

13088

13090

13092

13094

13096

13098

13100

13102

13104

13106

13108

13110

13112

13114

13116

13118

13120

13122

13124

13126

13128

13130

13132

13134

13136

13138

13140

13142

13144

13146

13148

13150

13152

13154

13156

13158

