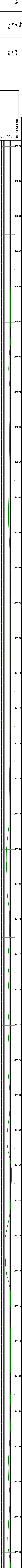
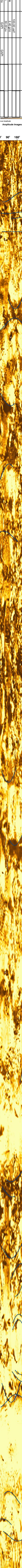
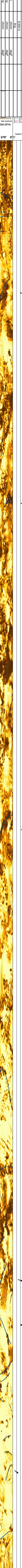
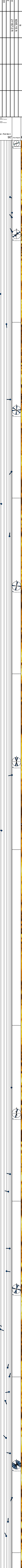
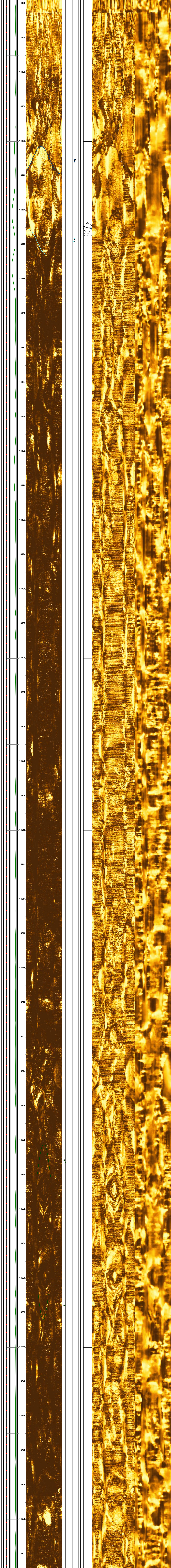


Country	USA	Field	Boggeess-3H
Operator	NNE	Operator	NorthEast Natural Energy
Well:	Boggeess-3H	Block	
LOCATION		Country	USA
Permanent Datum		Other Services:	
TD Offset - MD		NONE	
Drilling Measured From:		Elevations:	
		KB: ft	

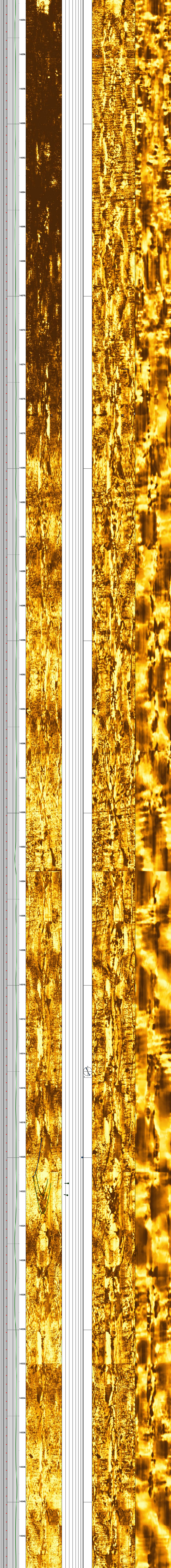
TD	ft		
Top Log Int	6045.15 ft		
Base Log Int	21167.0 ft		
Top Picc Int			
Base Picc Int			
Bit Size	8.500 in		
MUD V1	10/g		
RMF & Temp	ohmm	degF	
RMF & Temp	ohmm	degF	
RMF & Temp	ohmm	degF	
DLT Shale	100.00 us/f		
RHOB Shale	2.40 g/cc		
PHLN Shale	30.00 pu		
GR Sh Matrix	GAPI		
BHT	degF	ppm	
BH/TM Stability	ppm	degF	
Rv & Temp	ohmm	degF	
M and N	2.00		
Analysis Loc			



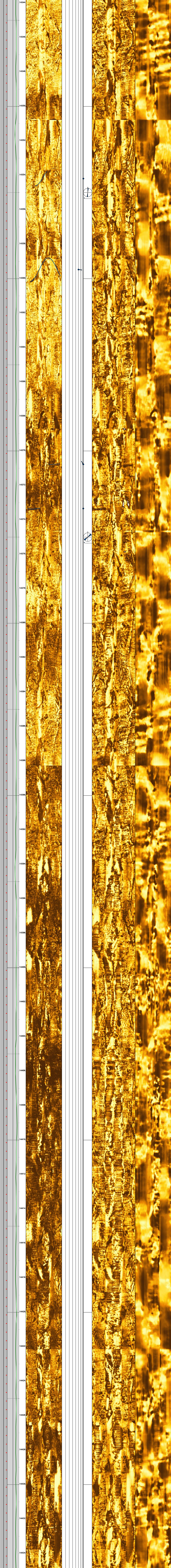




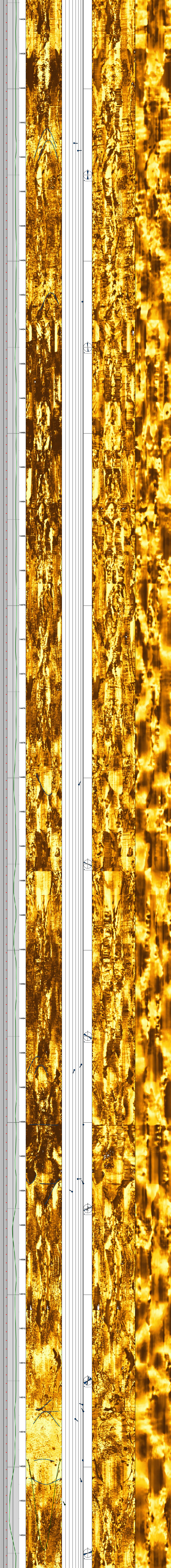




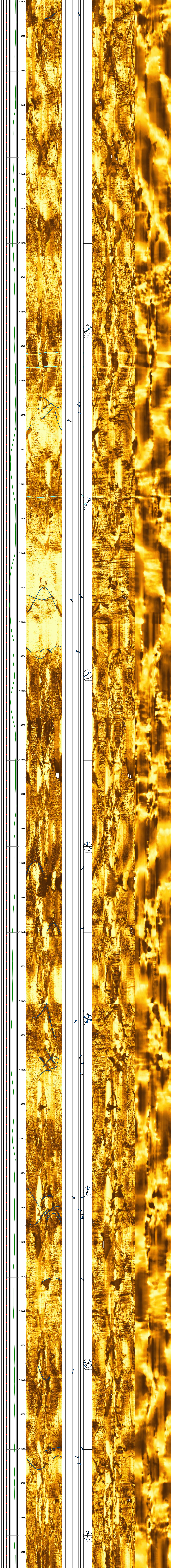




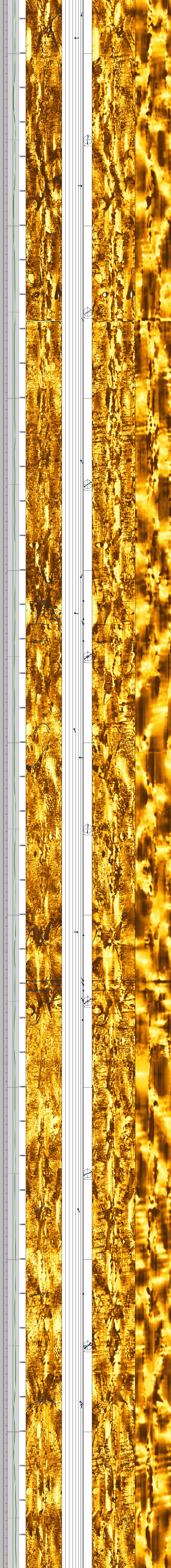




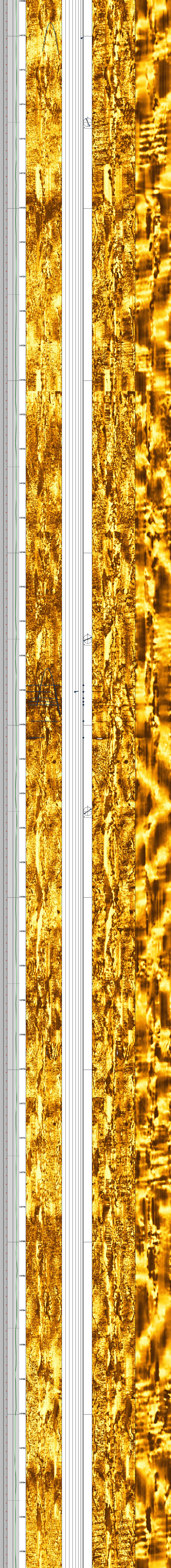




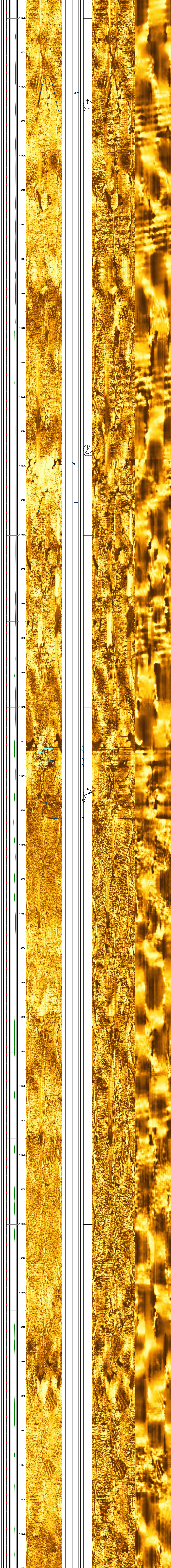




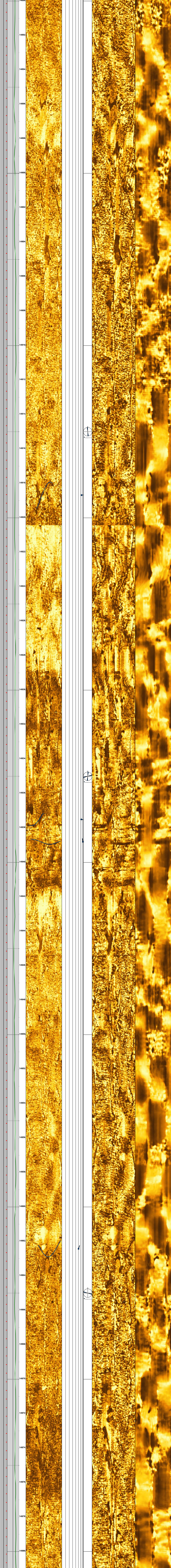




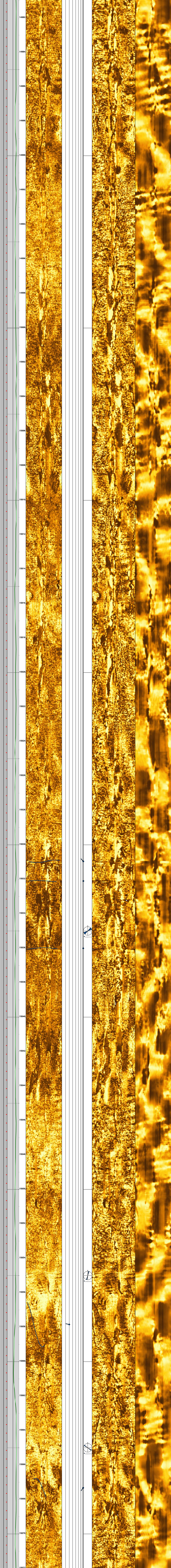




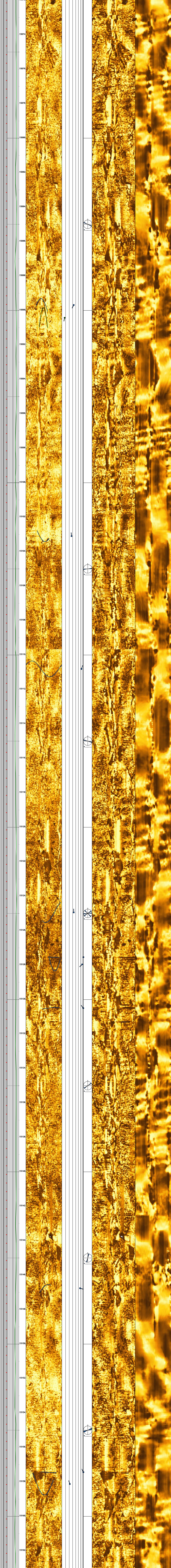




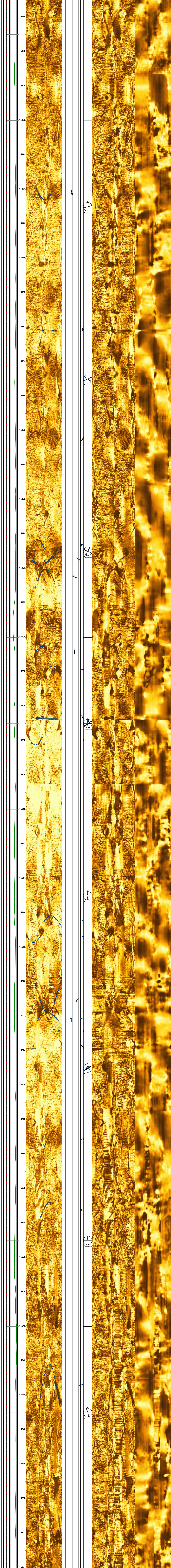




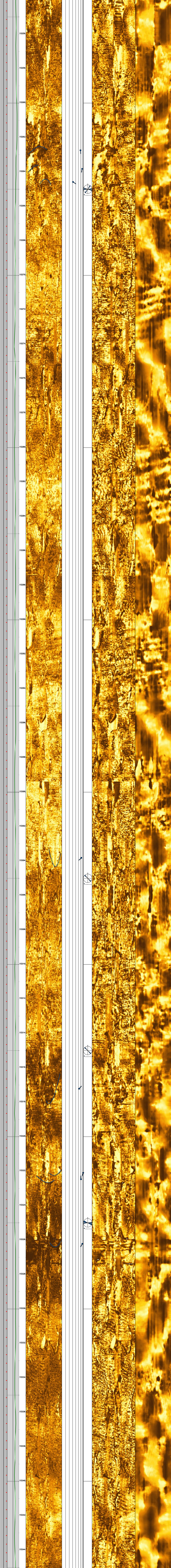




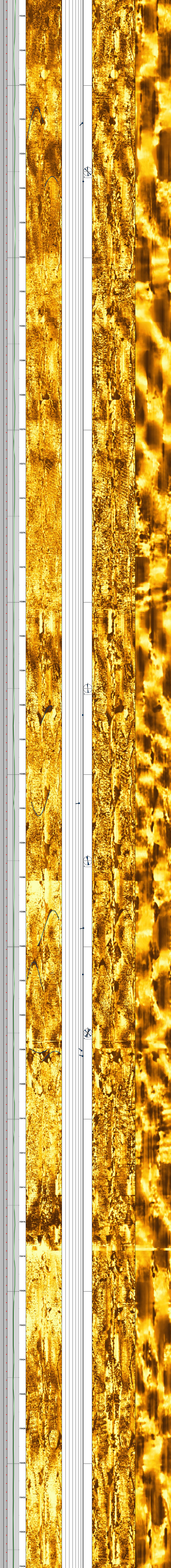




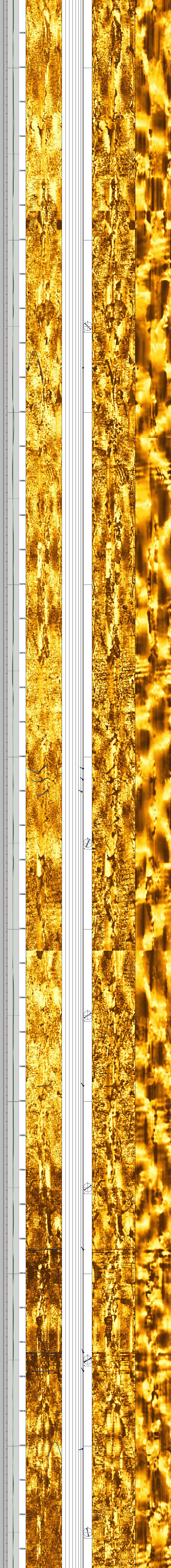




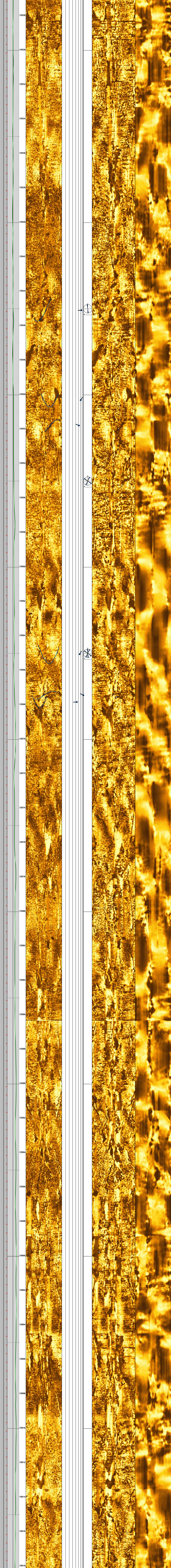




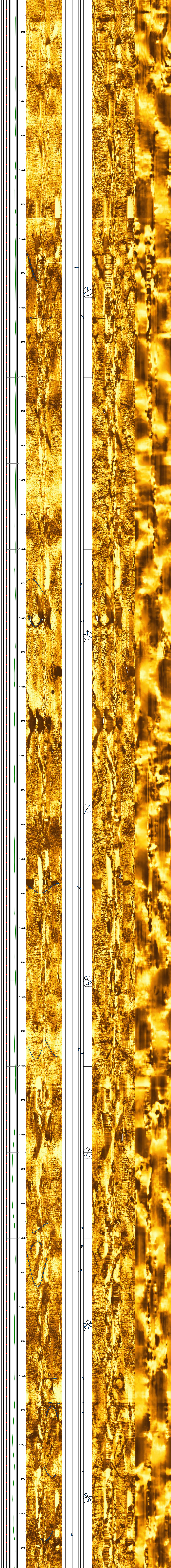




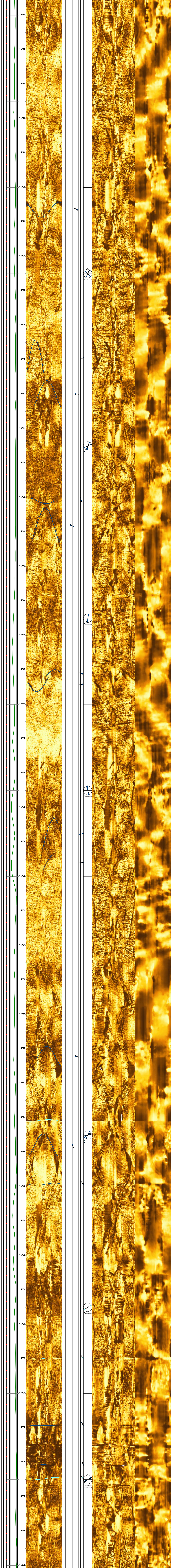




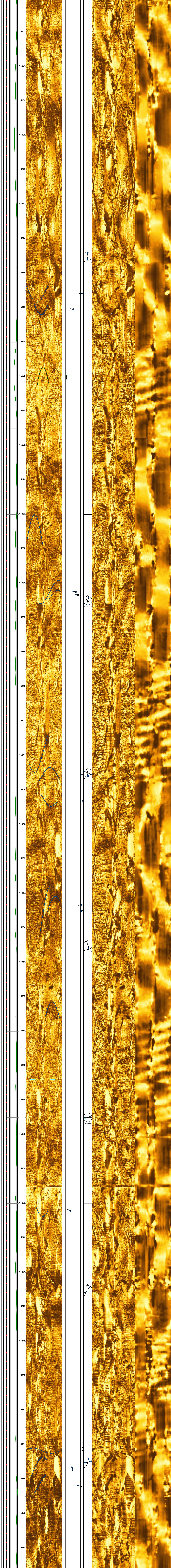




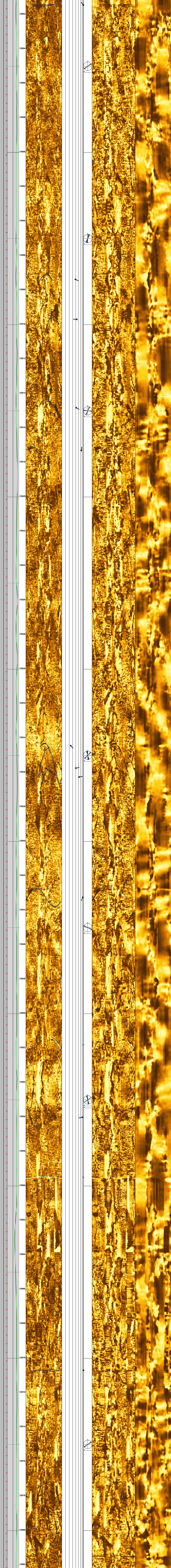




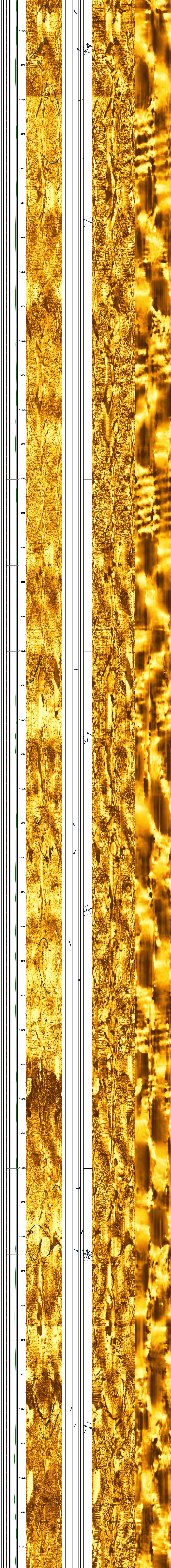




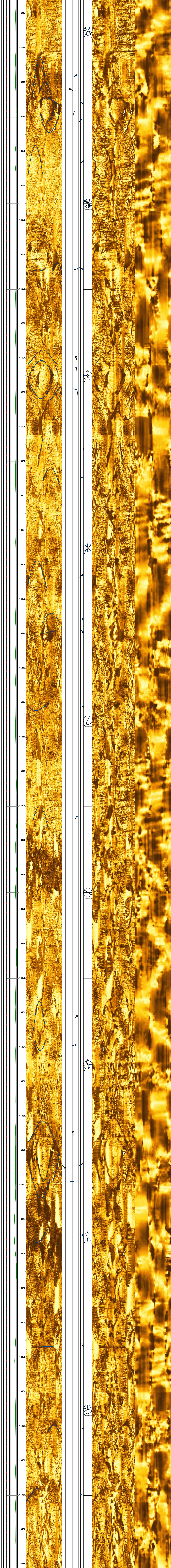




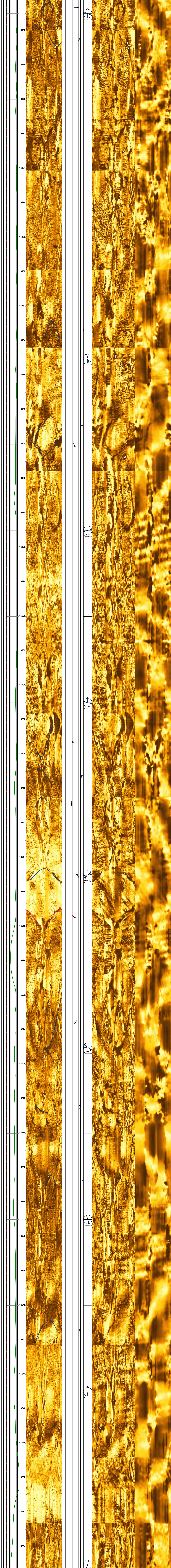




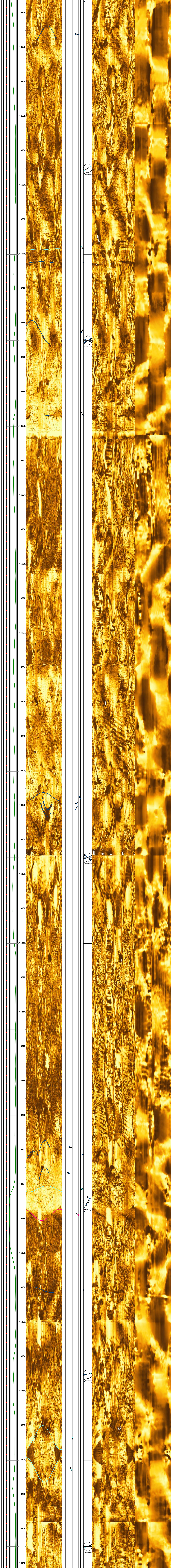




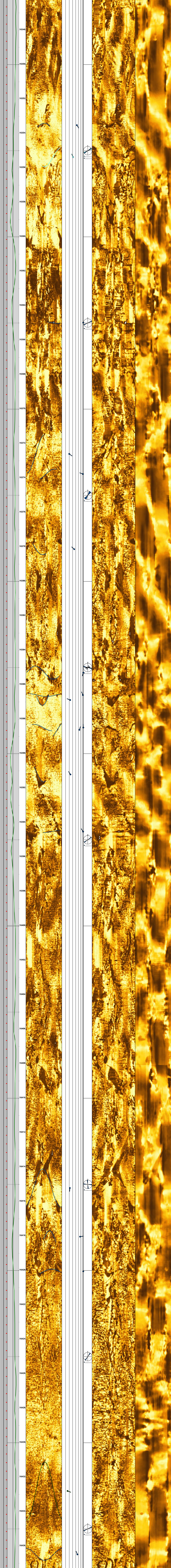




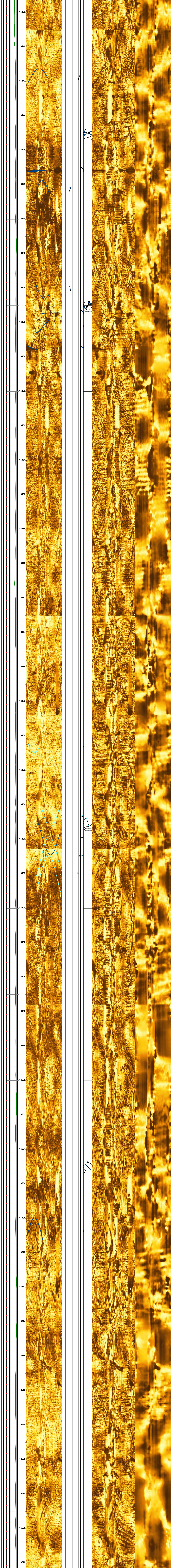




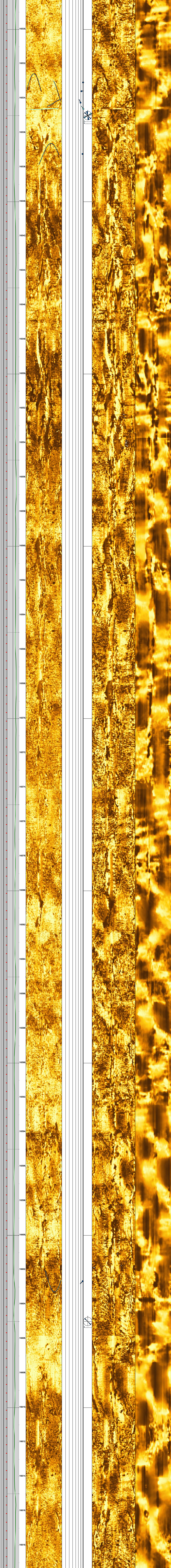




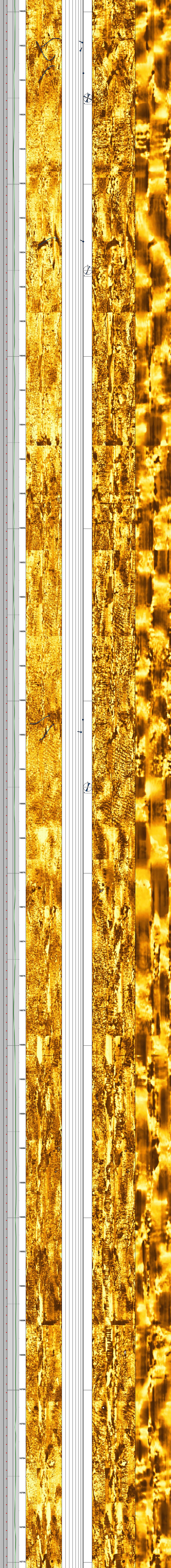




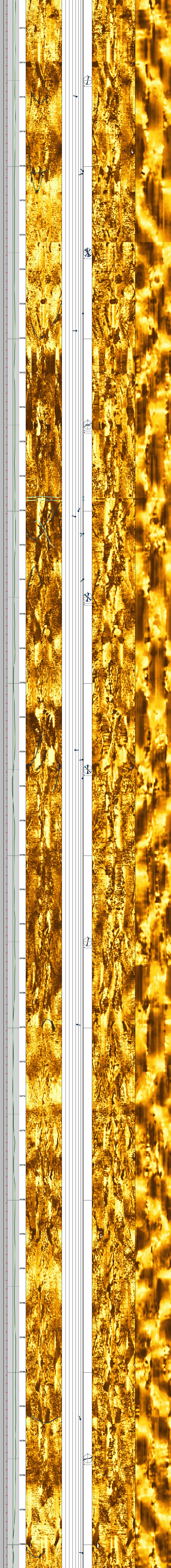




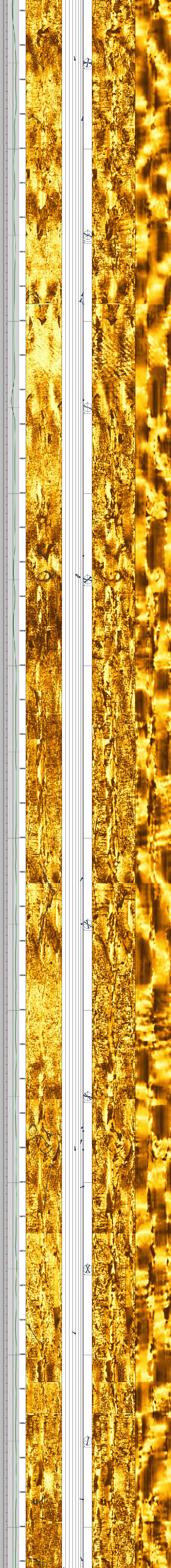




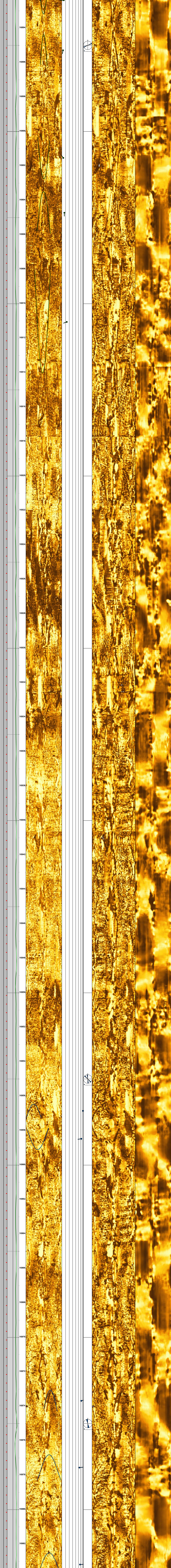




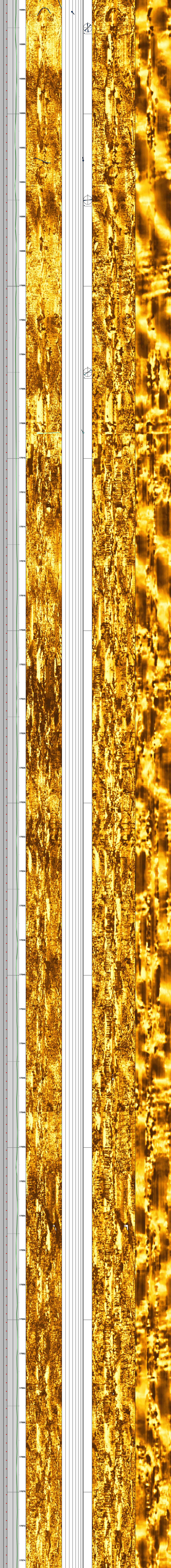




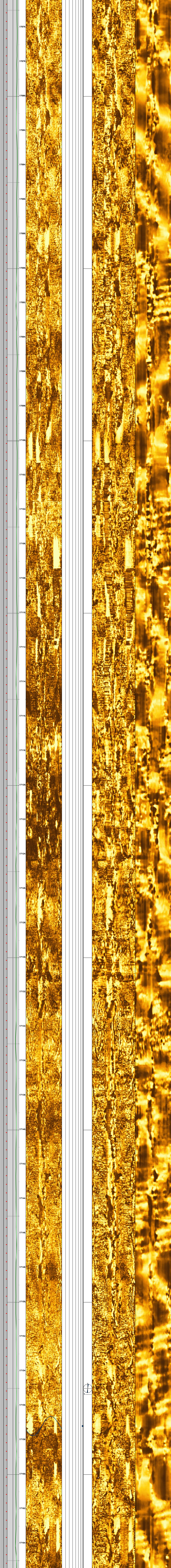




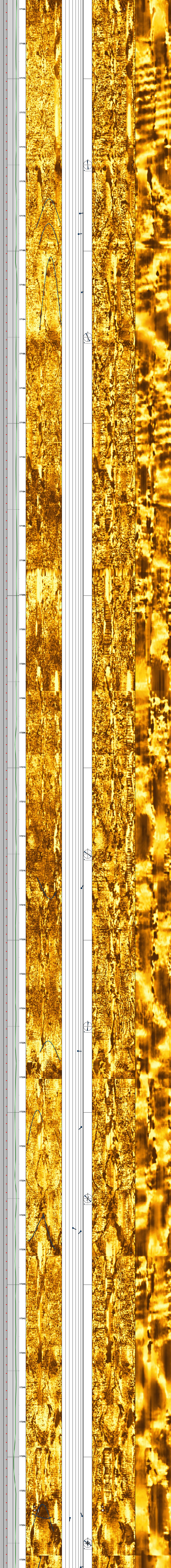




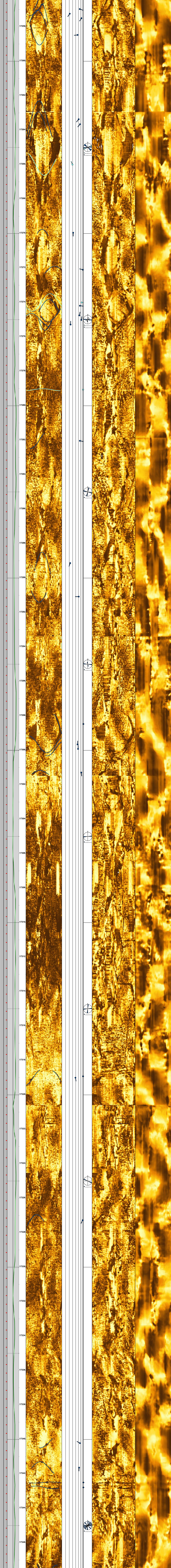




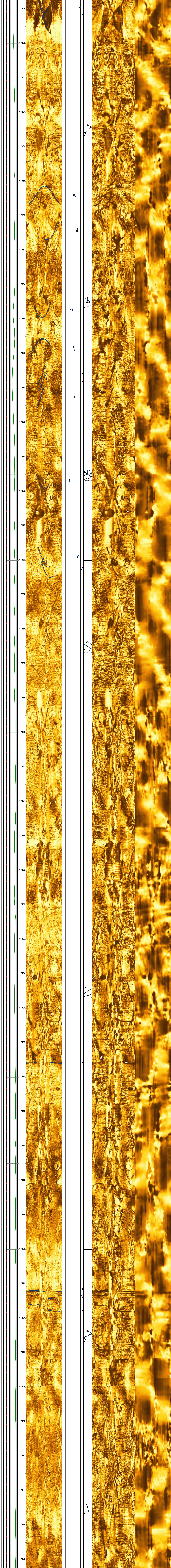




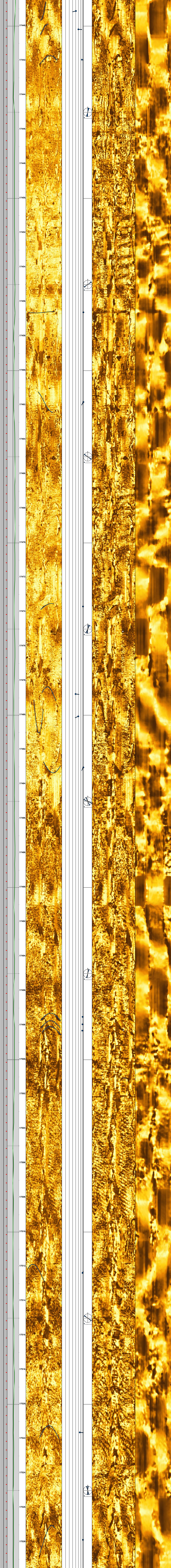




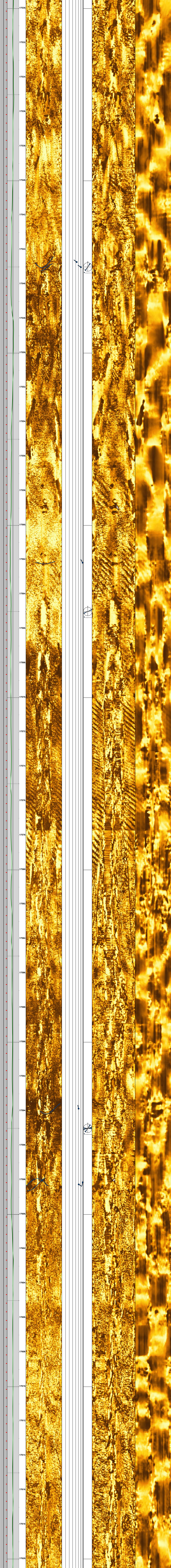












17530

17532

17534

17536

17538

17540

17542

17544

17546

17548

17550

17552

17554

17556

17558

17560

17562

17564

17566

17568

17570

17572

17574

17576

17578

17580

17582

17584

17586

17588

17590

17592

17594

17596

17598

17600

17602

17604

17606

17608

17610

17612

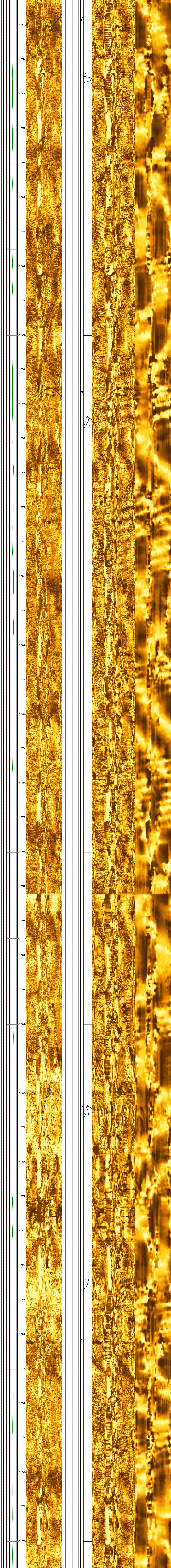
17614

17616

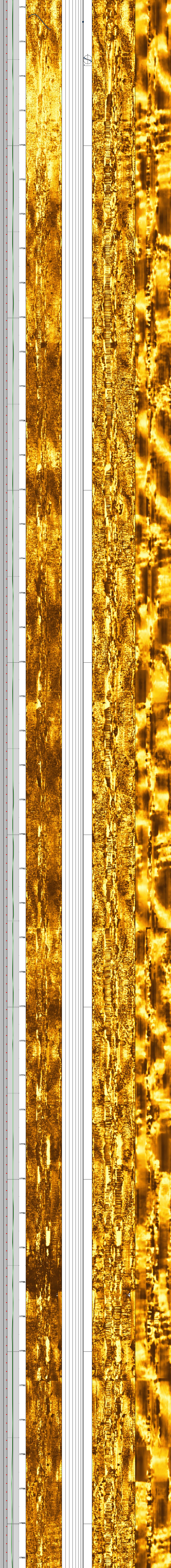
17618

17620

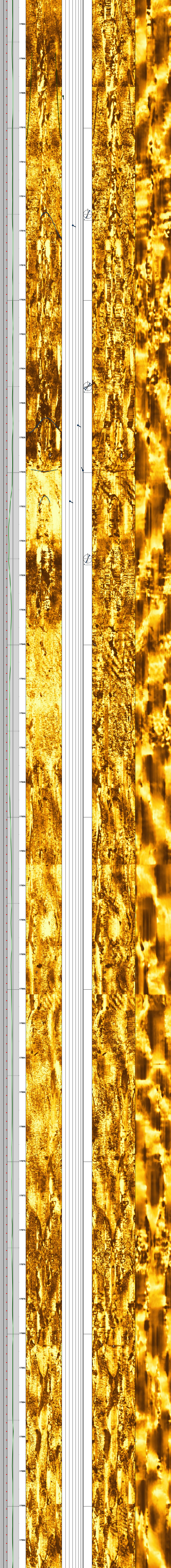




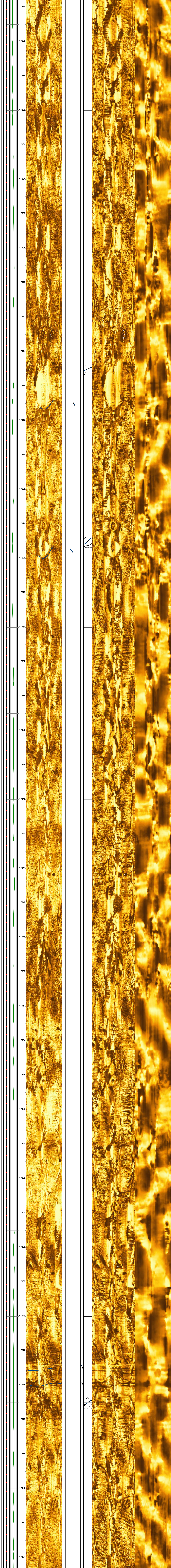




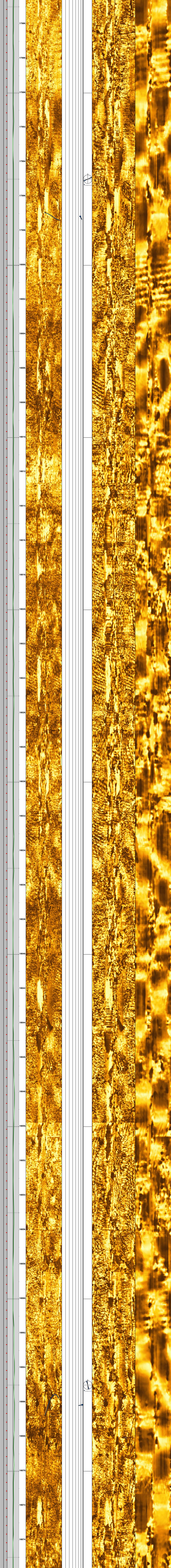




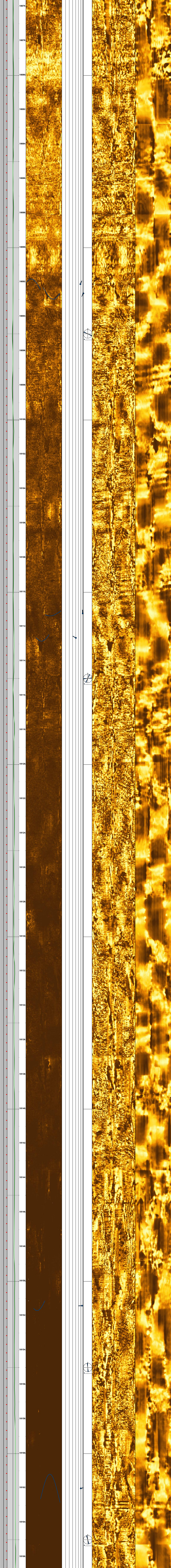












18076

18078

18080

18082

18084

18086

18088

18090

18092

18094

18096

18098

18100

18102

18104

18106

18108

18110

18112

18114

18116

18118

18120

18122

18124

18126

18128

18130

18132

18134

18136

18138

18140

18142

18144

18146

18148

18150

18152

18154

18156

18158

18160

18162

18164

18166



