



NNE Boggess 3H: Vertical – Job Summary

14th May 2019

Prepared by:
Dmitry Avdeev

DRILLING
OPERATIONS

DRILLING
SOLUTIONS

DRILLING
EQUIPMENT

 **PetroMar**
A NABORS COMPANY

NNE Boggess 3H– Job Summary. Outline.



- **Section 01 (Vertical),**
 - **Pass01 (main drill)**

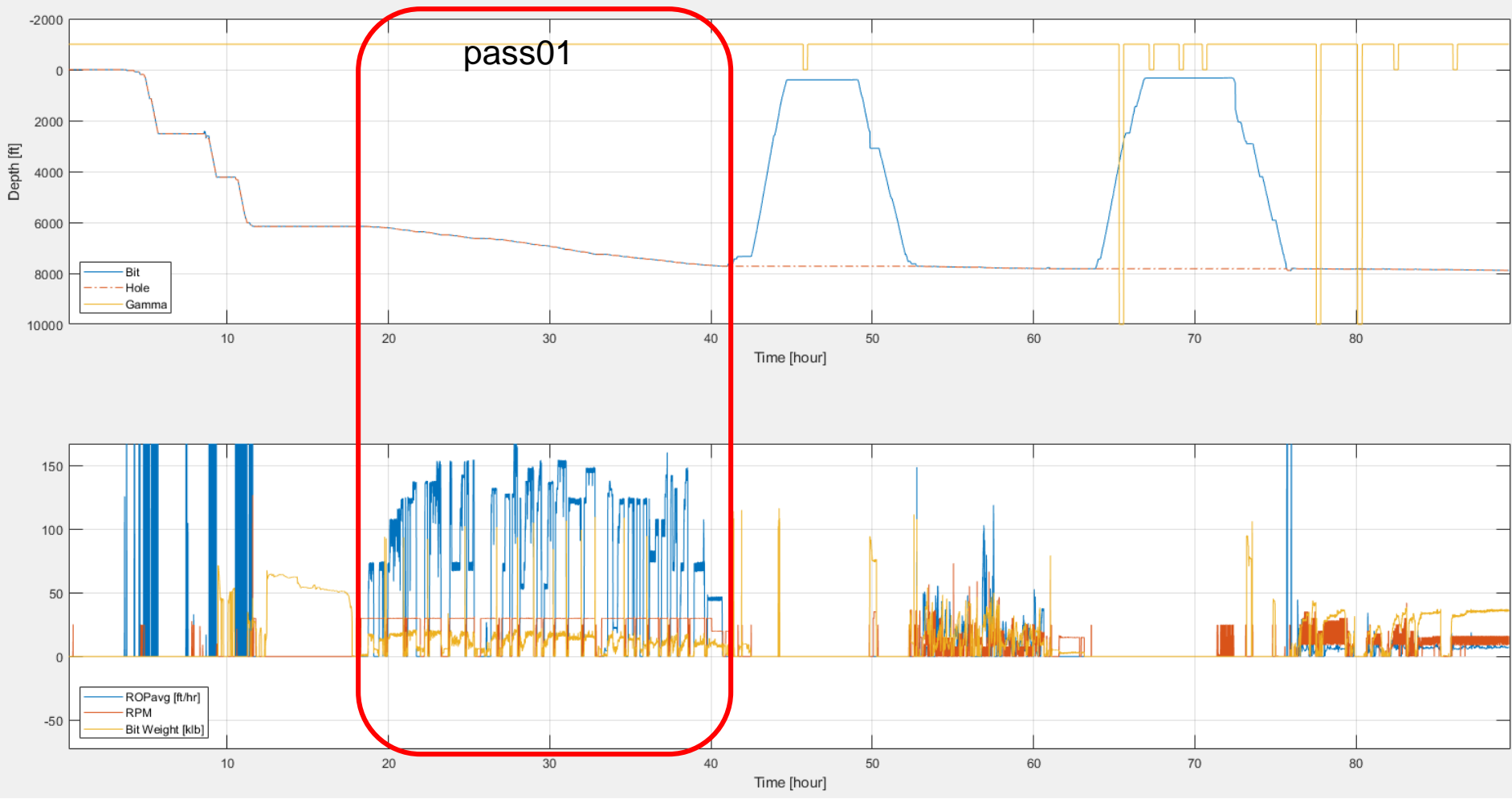
- **Section 02 (Lateral),**
 - **Pass01 (drill, part 1)**
 - **Pass02 (drill, part 2)**
 - **Pass03 (drill, part 3)**

NNE Boggess 3H– Job Summary. Outline.



- **Section 01 (Vertical),**
 - **Pass01 (main drill)**

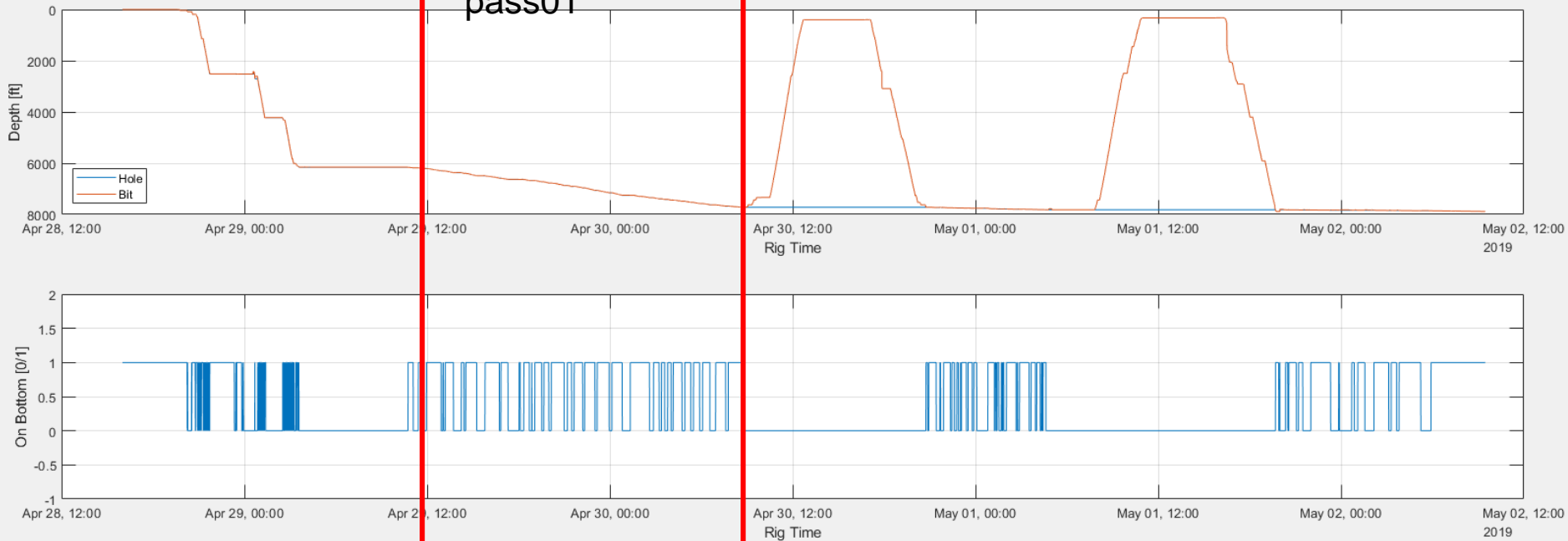
NE Boggess 3H– Job Summary. Section01. Pass01.



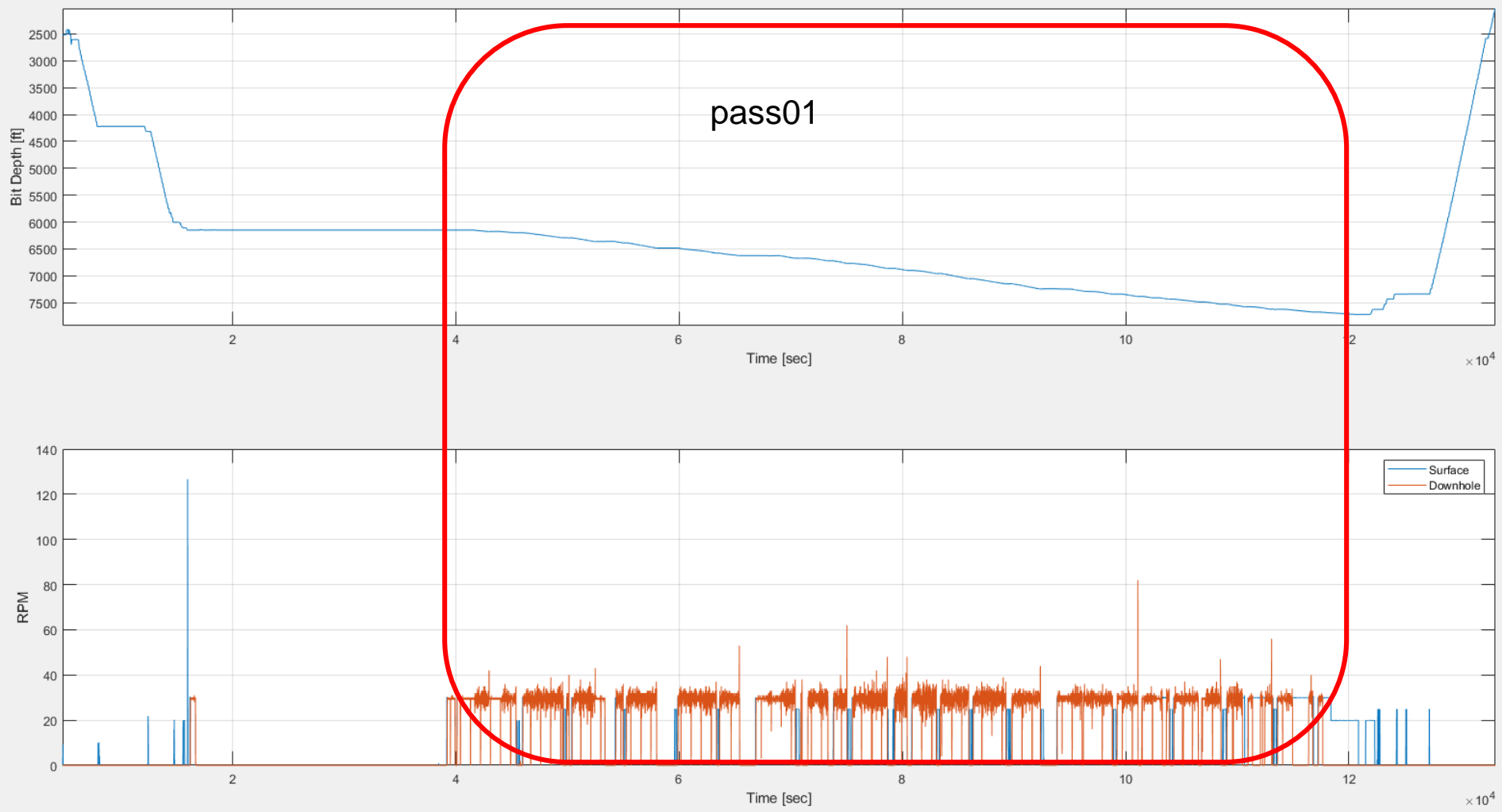
NNE Boggess 3H– Job Summary. Section01. Pason. On Bottom Status.



Section 01
pass01



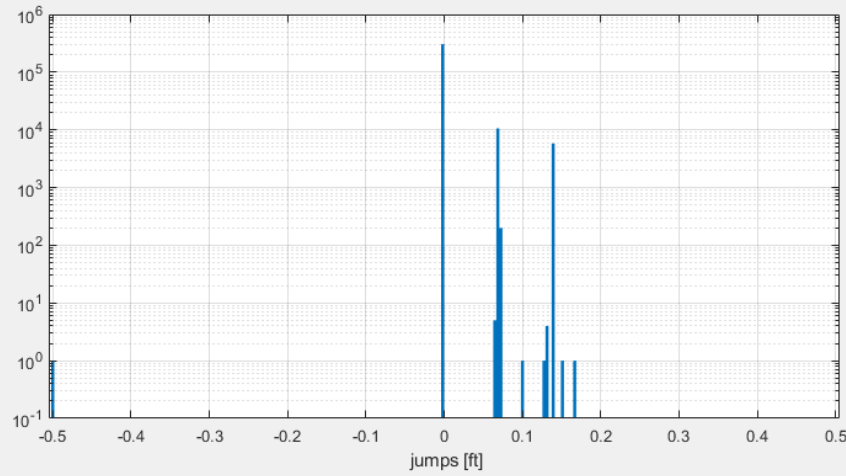
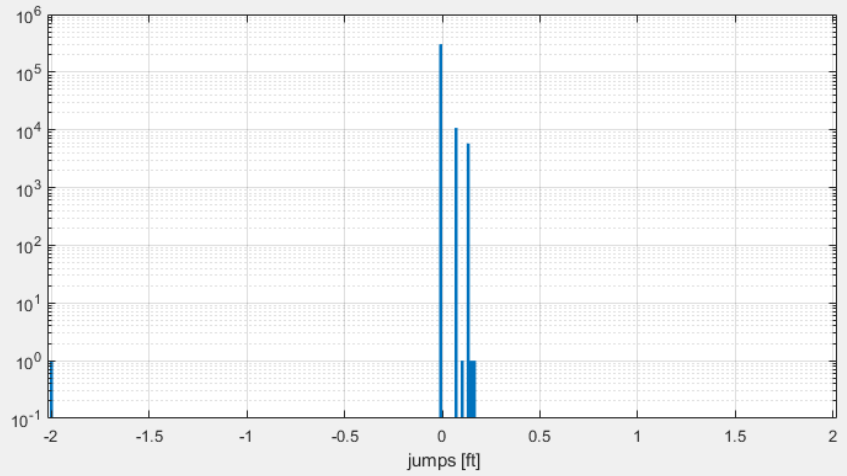
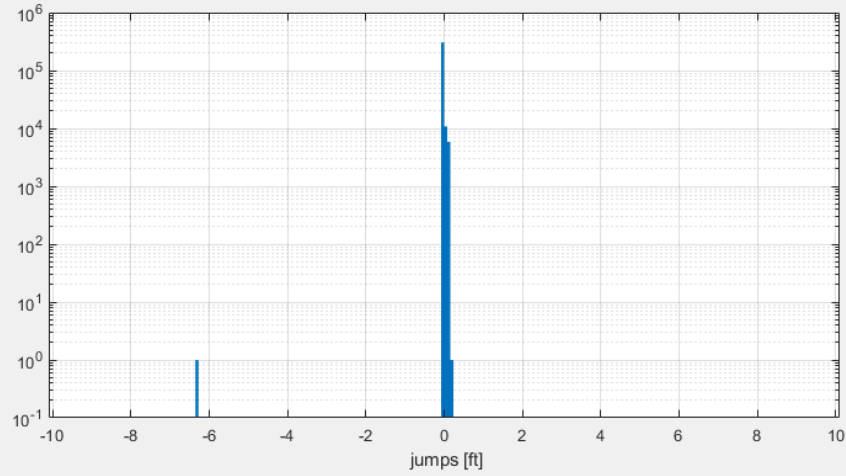
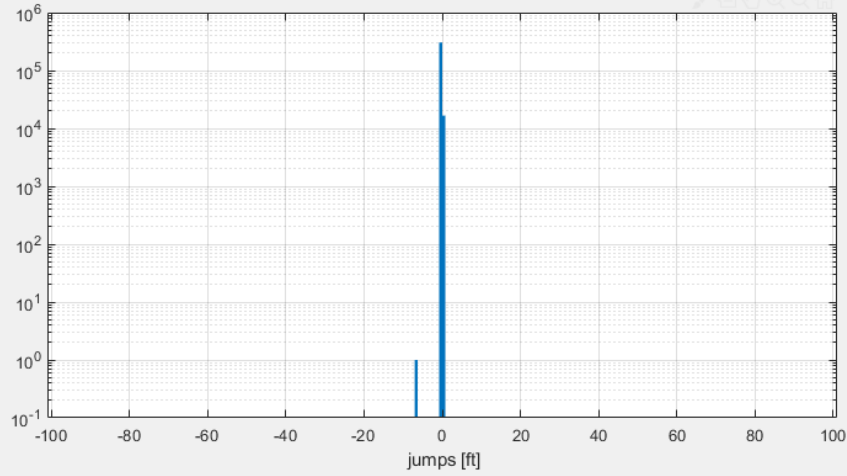
NNE Boggess 3H– Job Summary. Section01. Pass01 (zoom).



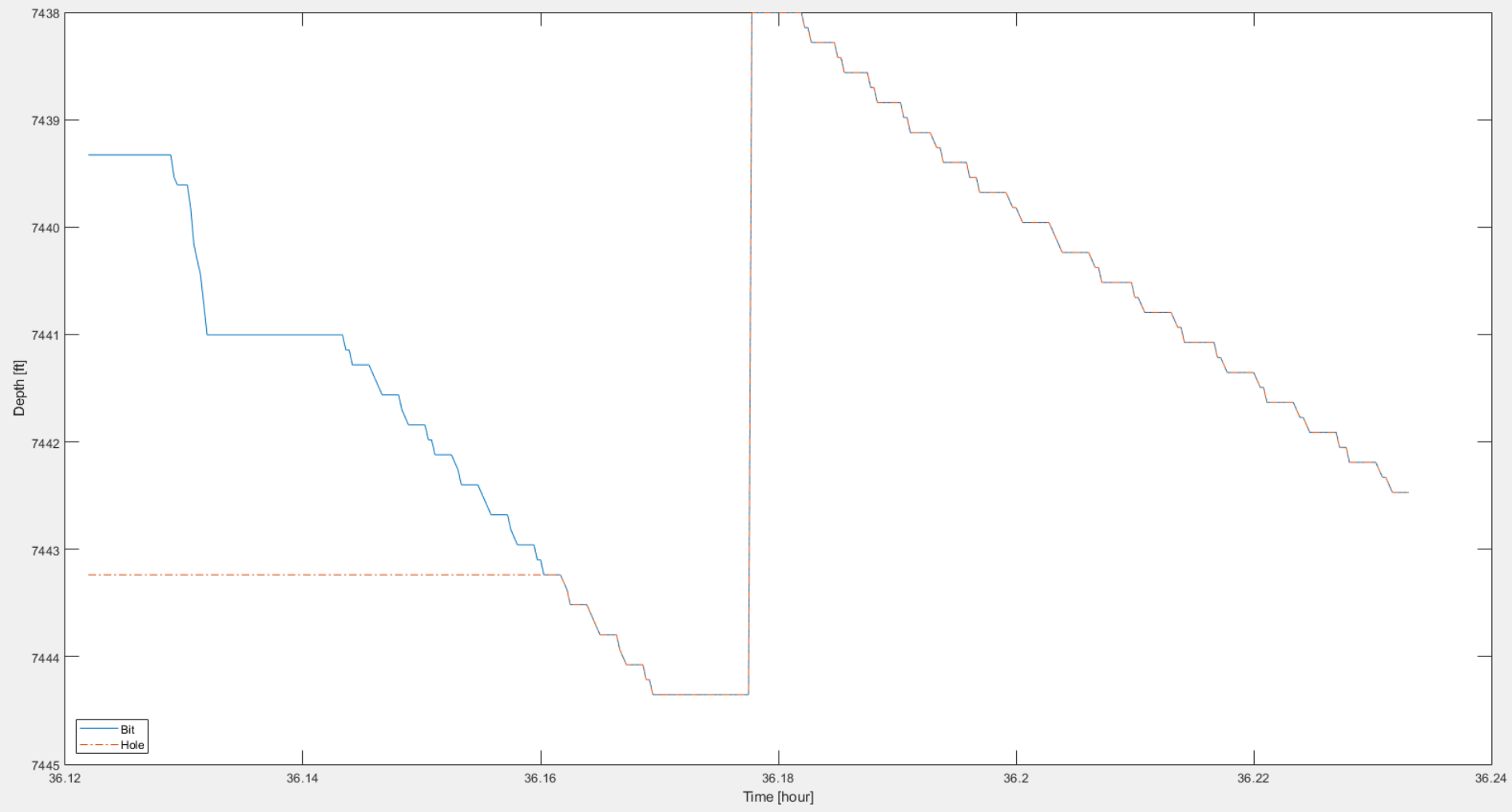


Pason TD Curve Irregularities

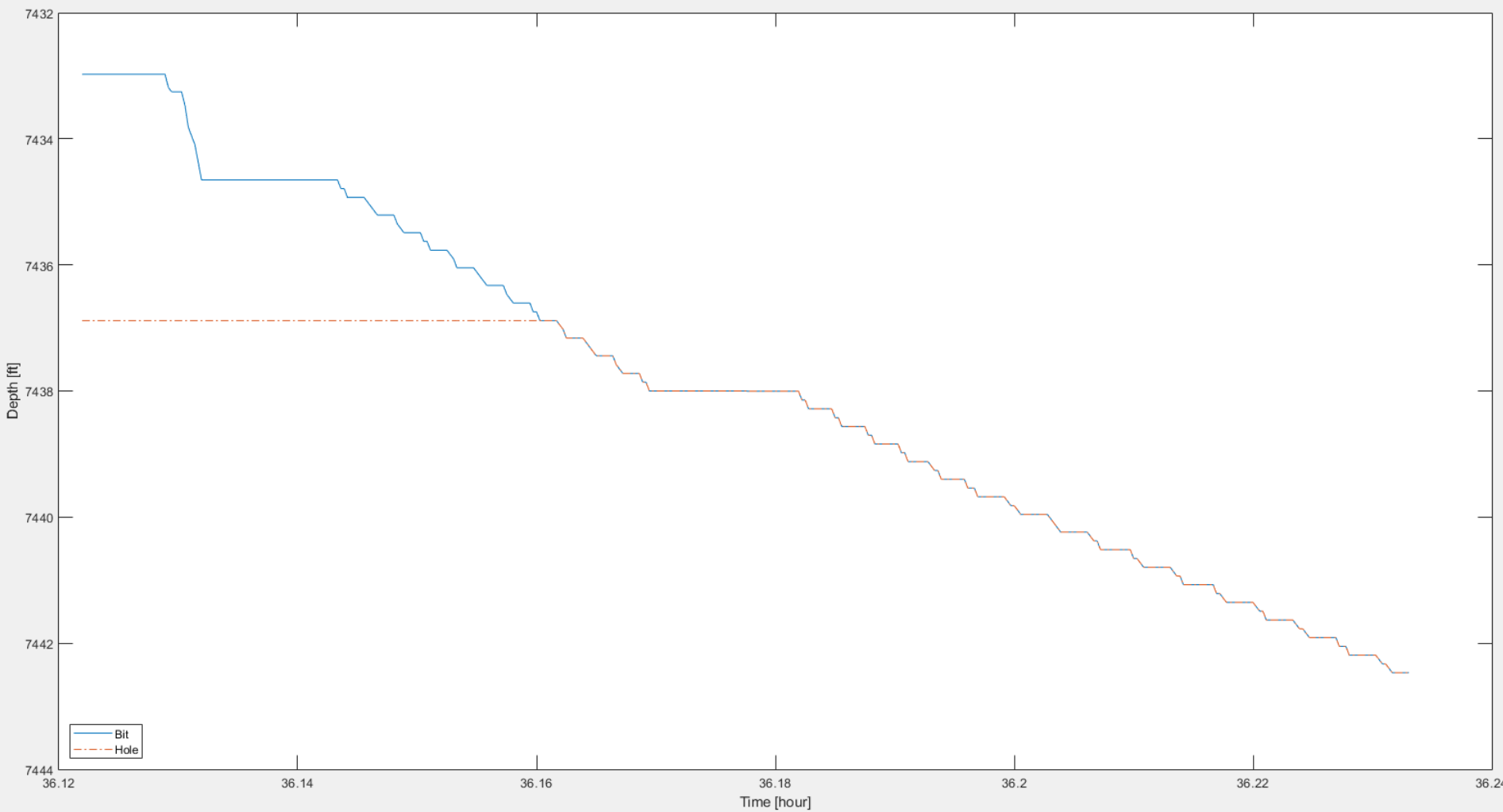
NNE Boggess 3H– Job Summary. Section01. Pason. TD Hole Depth Jumps Histogram



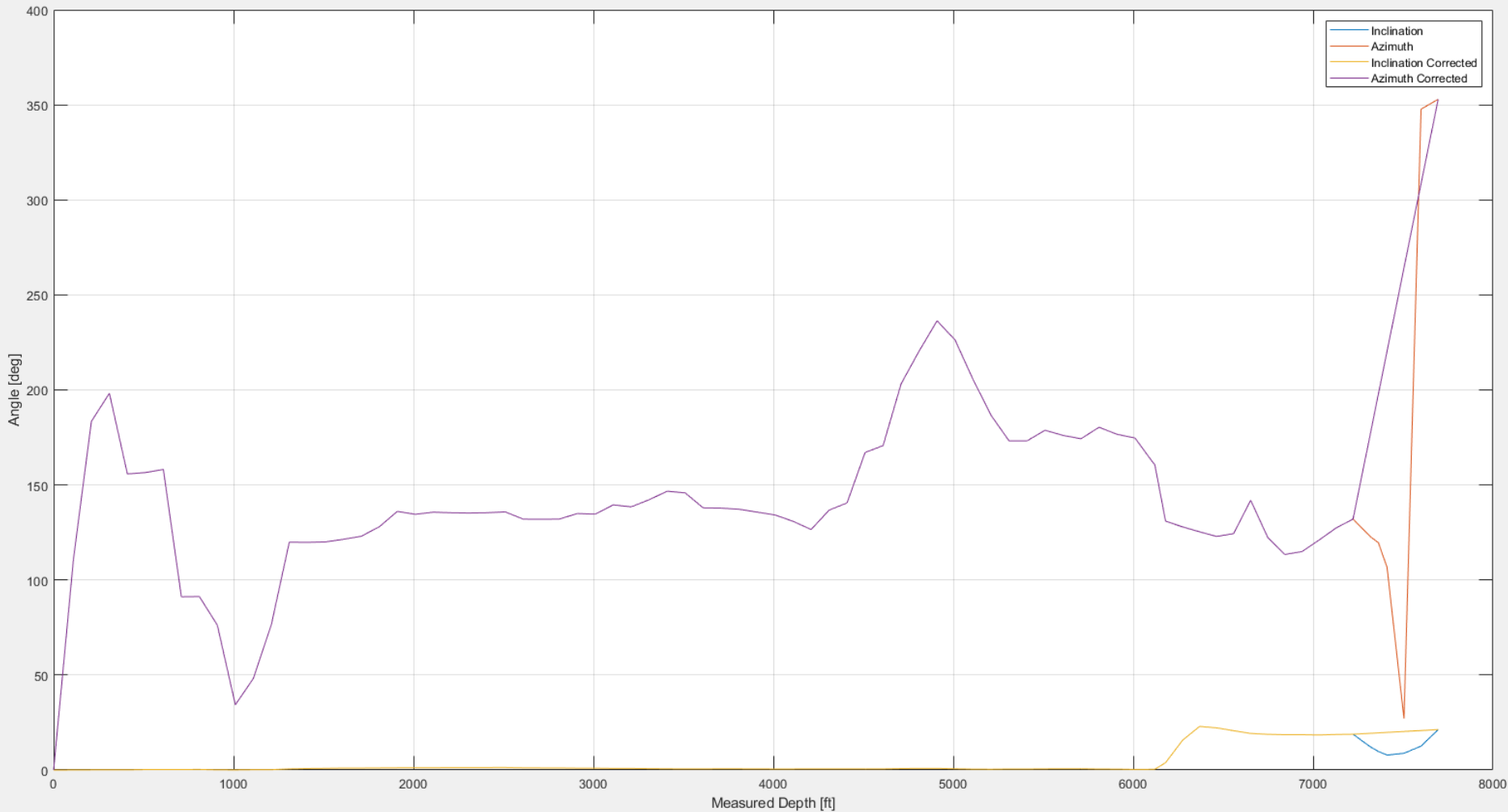
NNE Boggess 3H– Job Summary. Section01. Pason. Jumps >0.25 ft.



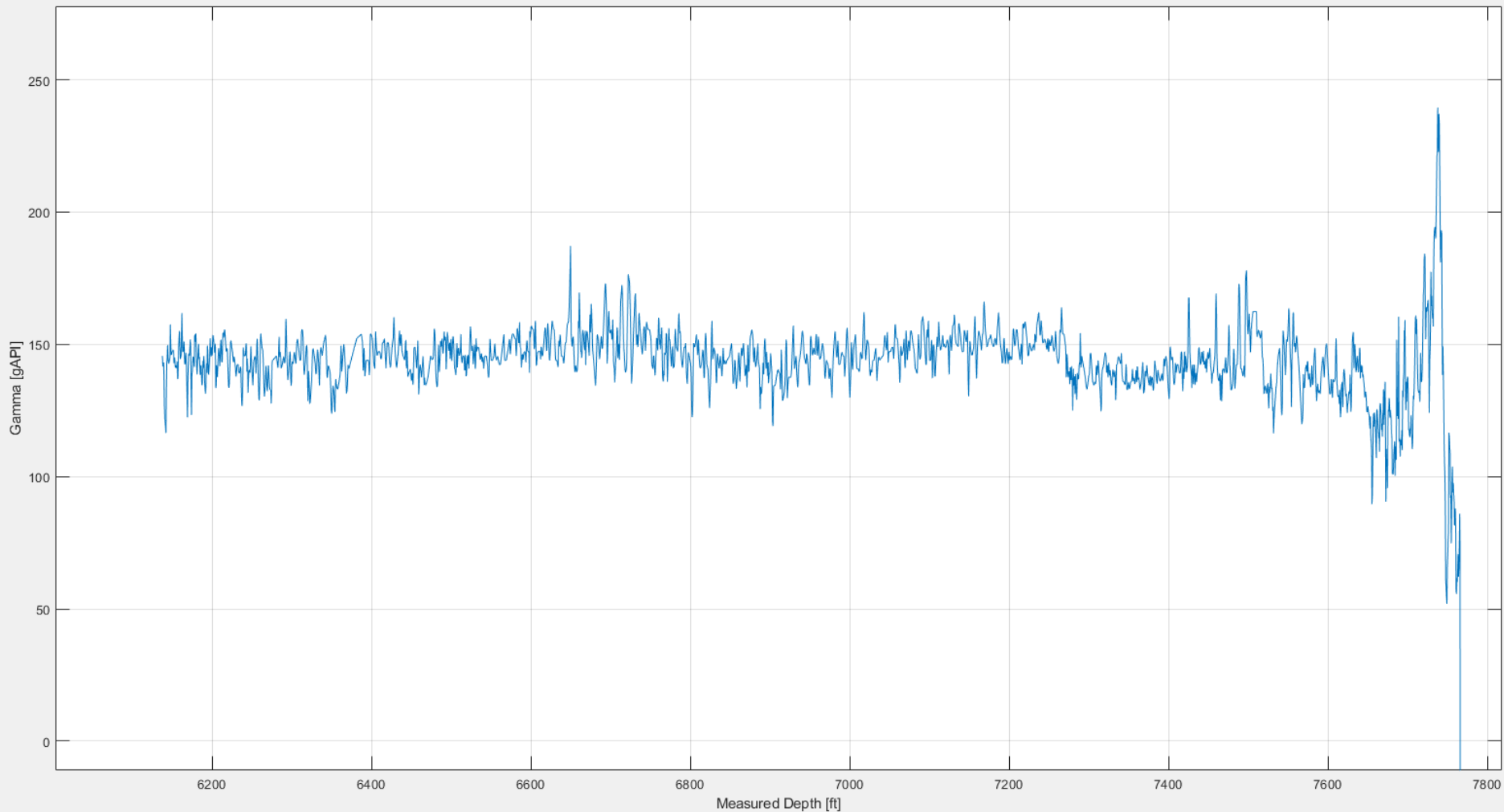
NNE Boggess 3H– Job Summary. Section01. Pason. Tracer Jumps Fixed.



NNE Boggess 3H– Job Summary. Section01. MWD. Inclination & Azimuth.



NNE Boggess 3H– Job Summary. Section01. MWD. Gamma API.



NNE Boggess 3H– Job Summary.

Section 01. Pass01 (main, drill)

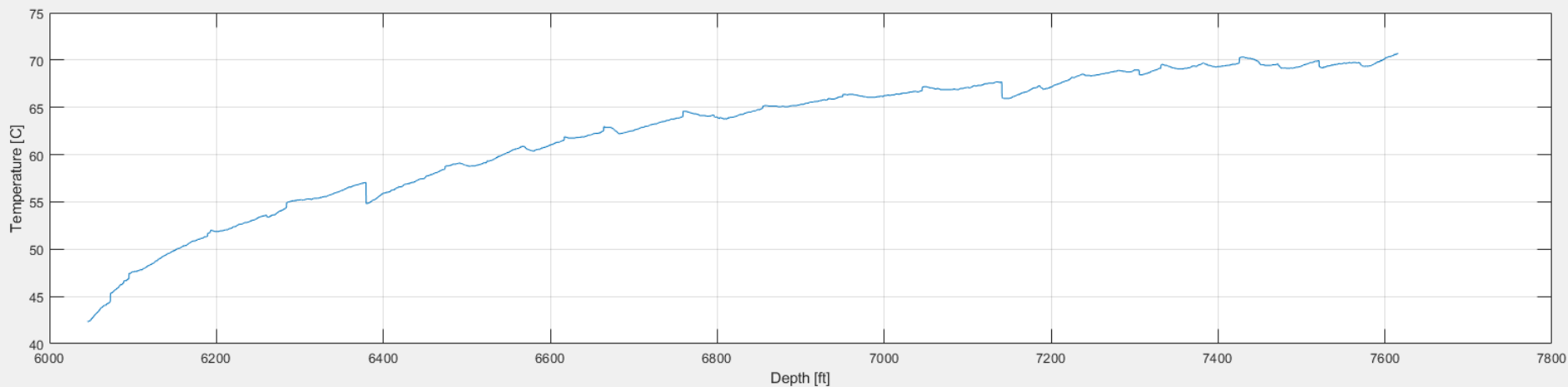
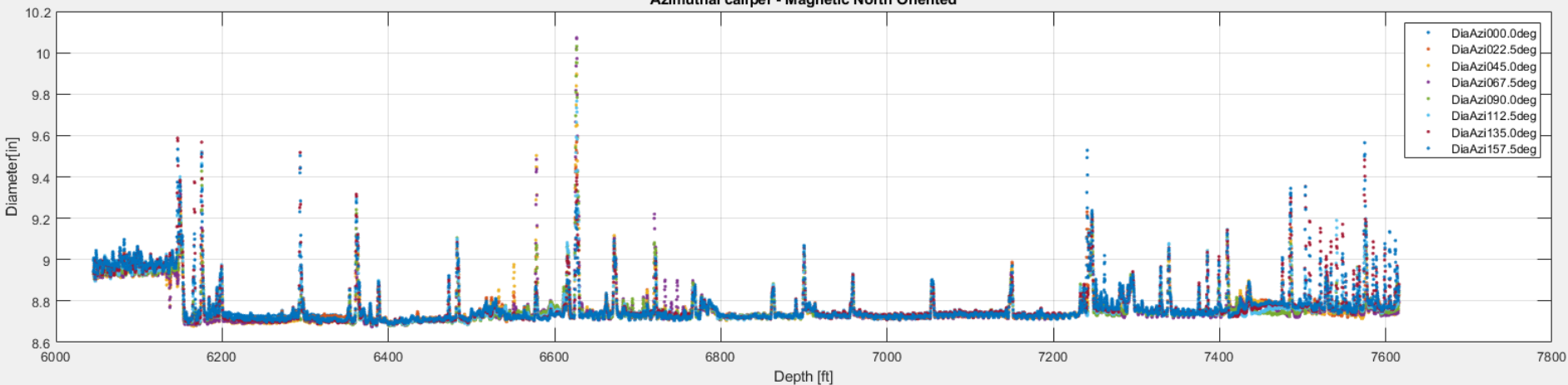


- **FV Sensor at 6,046 to 7,615 ft**
- **FV Sensor to Bit Distance ~105 ft**
- **Severe Stick-Slip !**

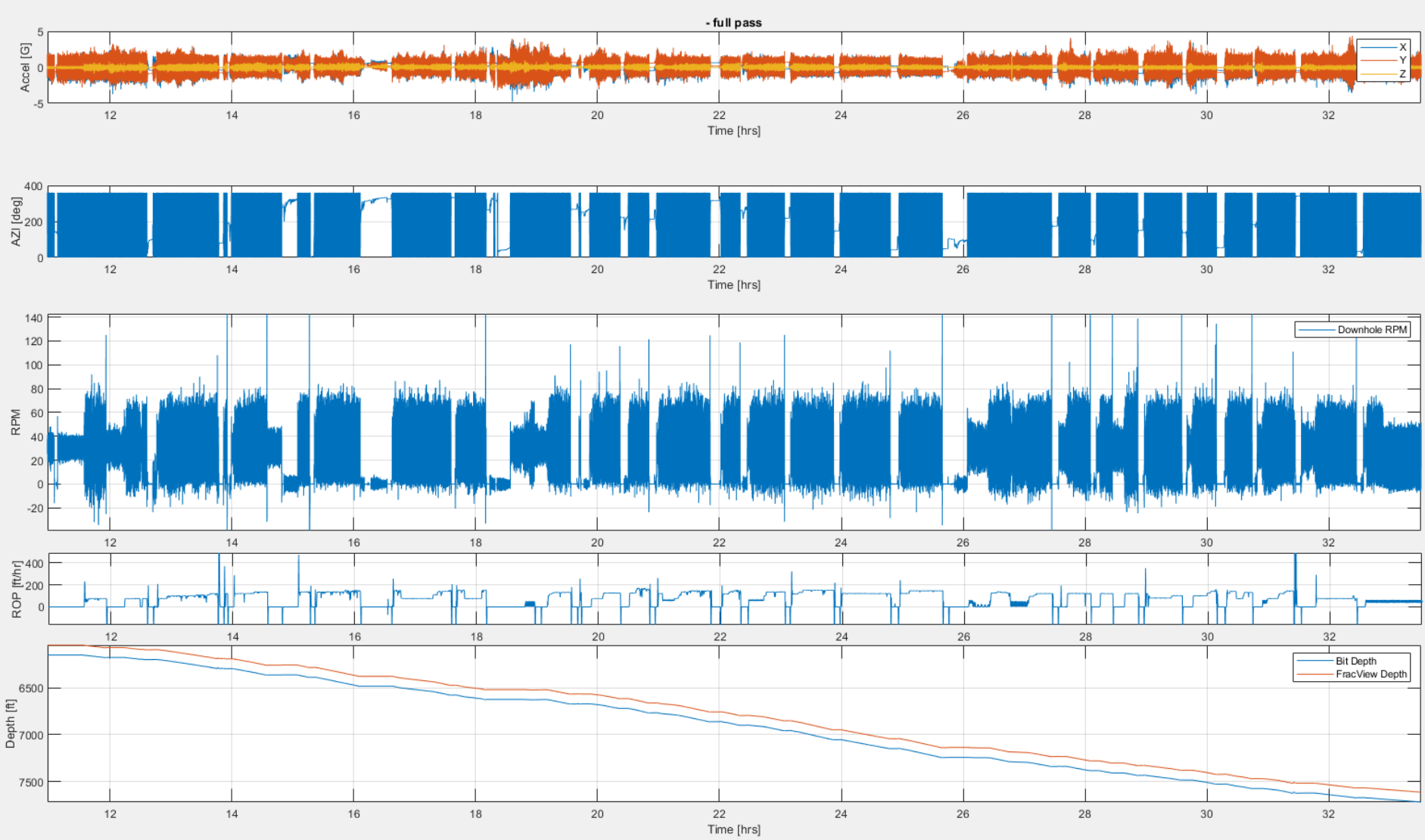
NE Boggess 3H– Job Summary. Section01. Pass01. Azimuthal Calipers.



Azimuthal caliper - Magnetic North Oriented

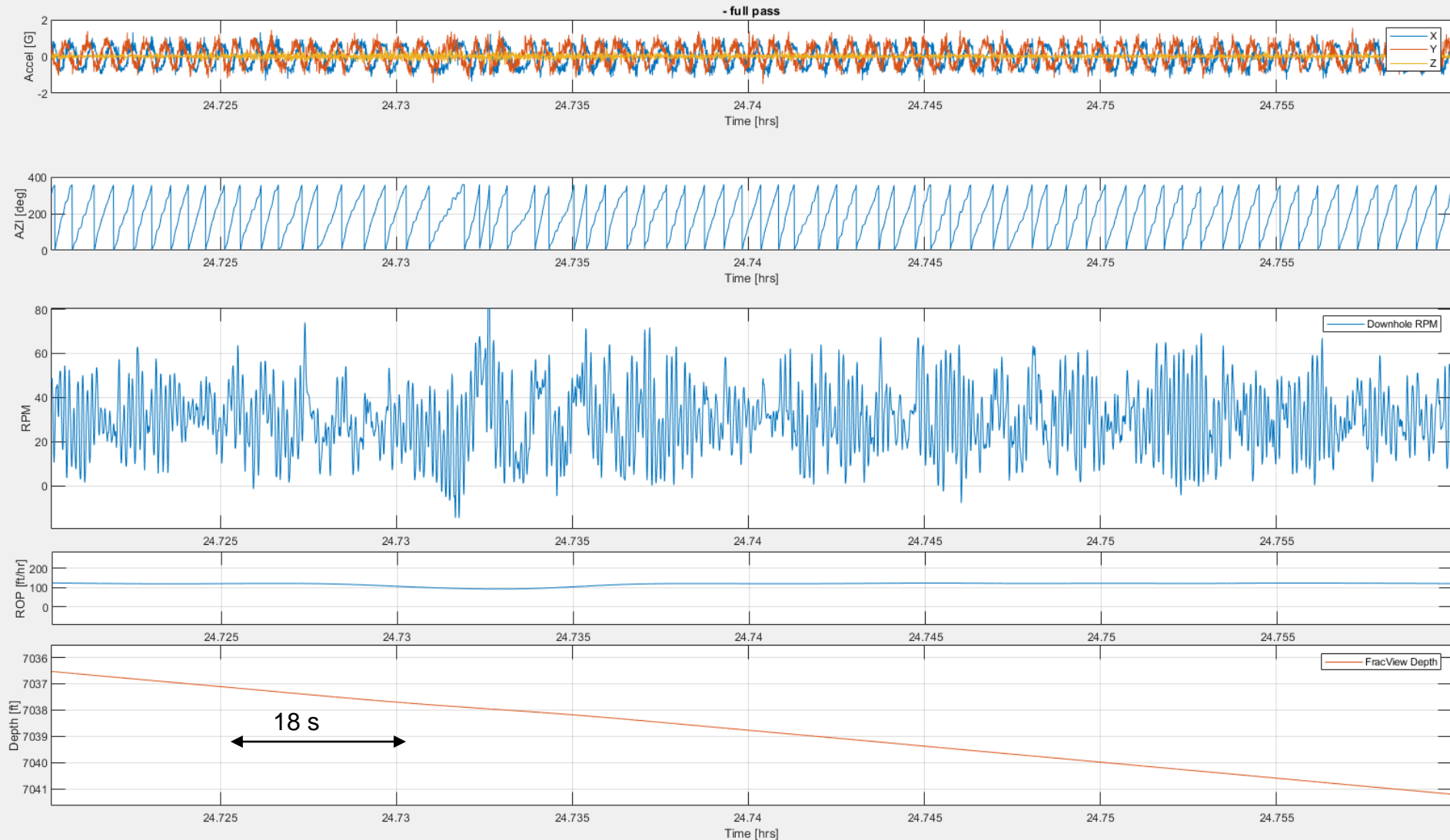


NE Boggess 3H- Job Summary. Section01. Pass01. Motion Dynamics. Stick-Slip



NE Boggess 3H– Job Summary.

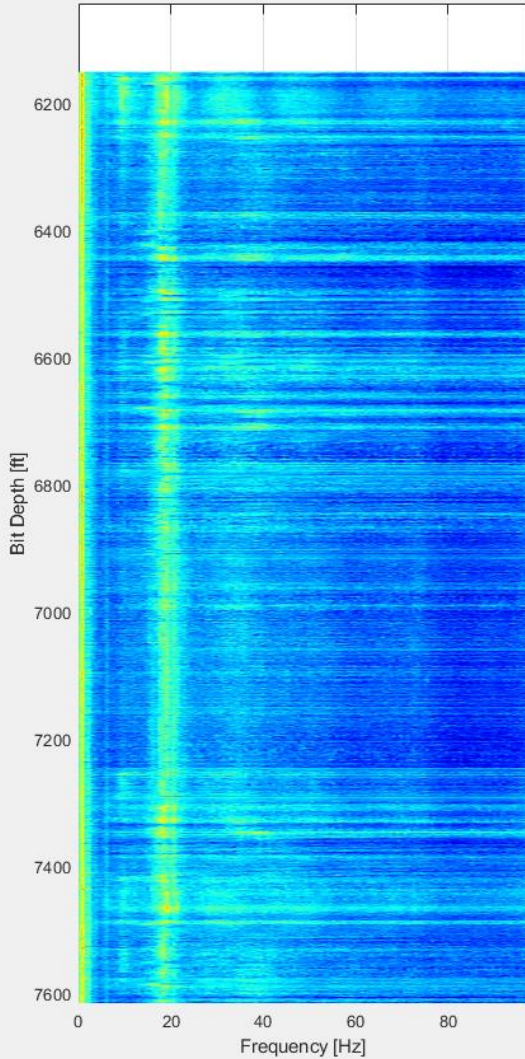
Section01. Pass01. Motion Dynamics (zoom)



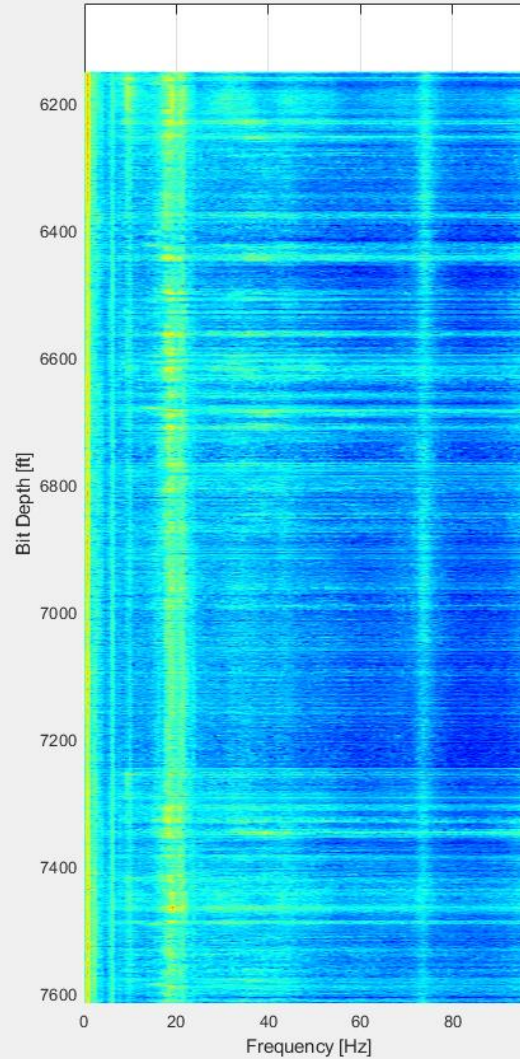
NNE Boggess 3H– Job Summary. Section01. Pass01. PSD



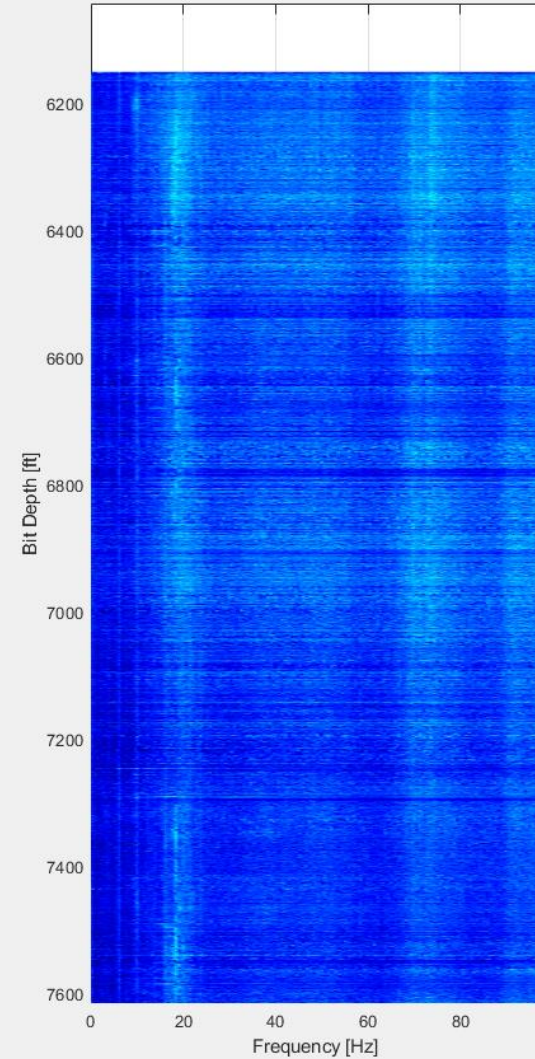
X accel



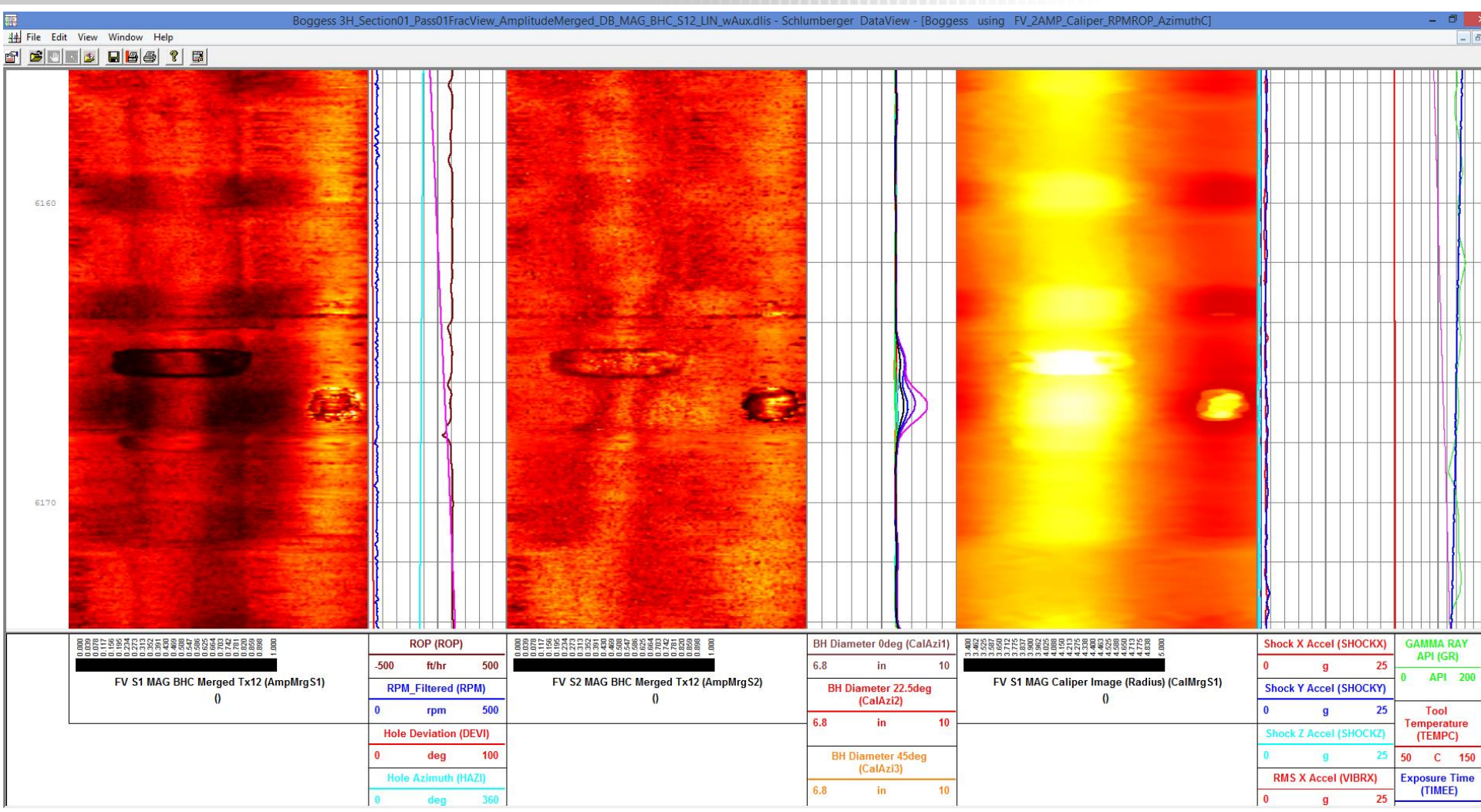
Y accel



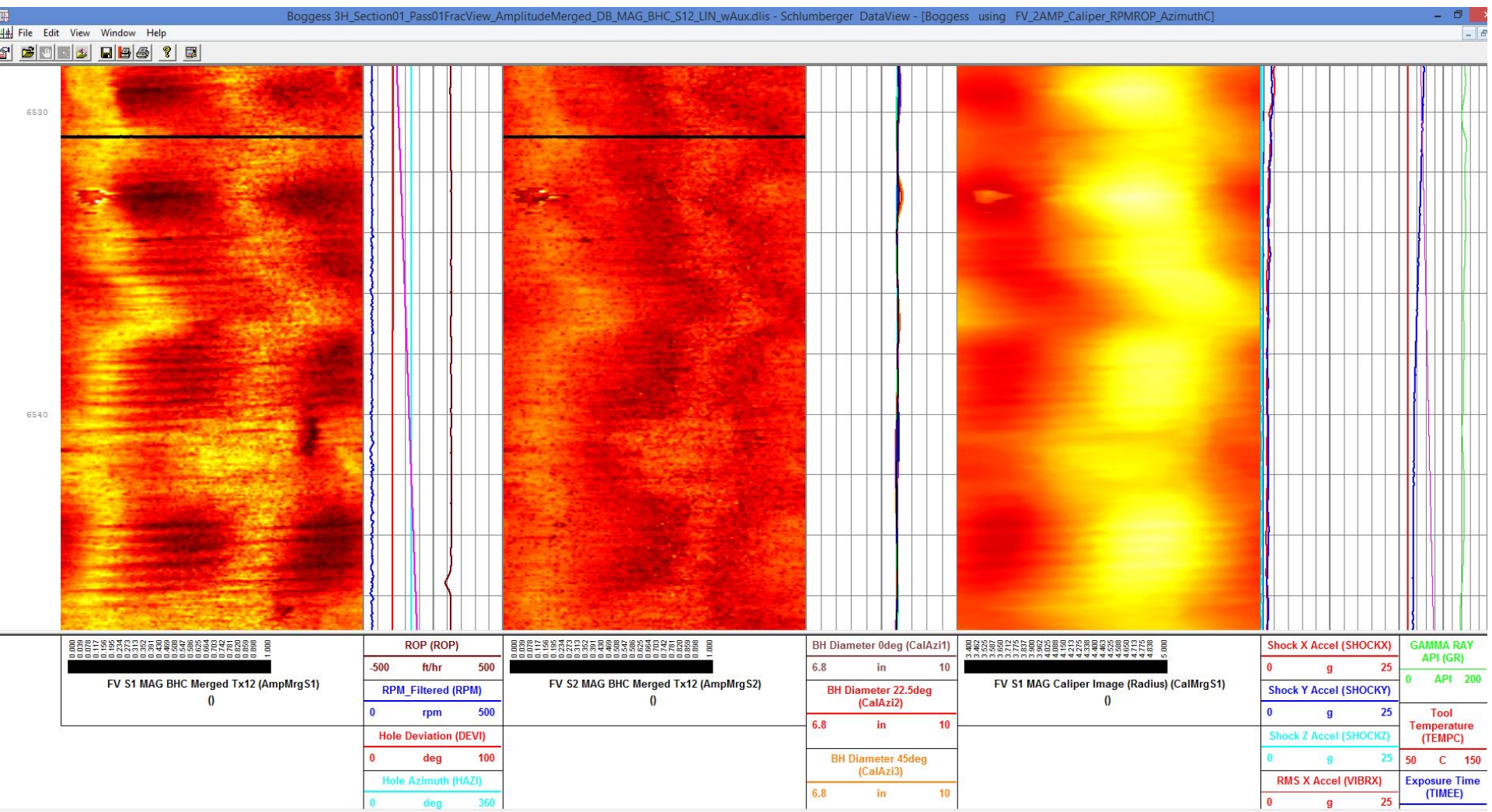
Z accel



NNE Boggess 3H– Job Summary. Section01. Pass01. BHC MAG S1 VS S2



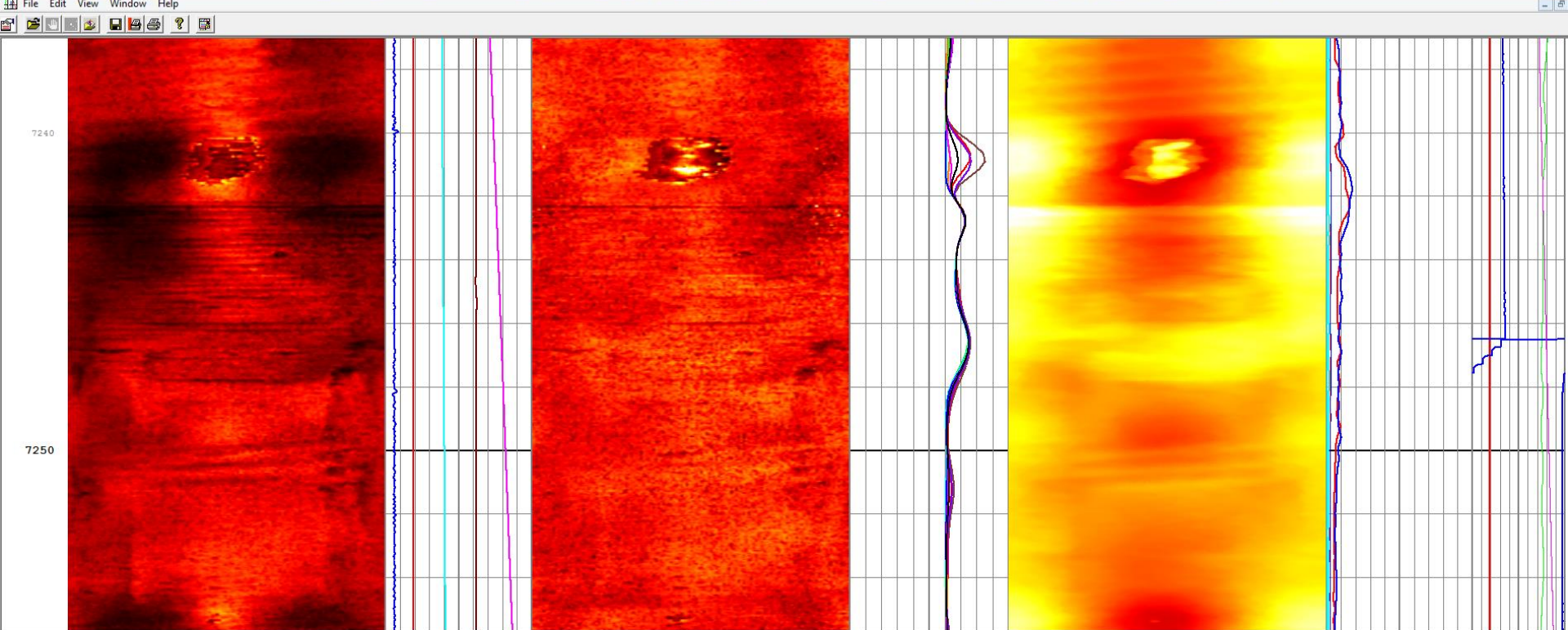
NNE Boggess 3H– Job Summary. Section01. Pass01. BHC MAG S1 VS S2



NE Boggress 3H– Job Summary. Section01. Pass01. BHC MAG S1 VS S2



Boggress 3H_Section01_Pass01FracView_AmplitudeMerged_DB_MAG_BHC_S12_LIN_wAux.dlis - Schlumberger DataView - [Boggress using FV_2AMP_Caliper_RPMROP_AzimuthC]



0.000	0.078	0.156	0.234	0.312	0.391	0.469	0.548	0.626	0.704	0.782	0.860	0.938	1.000
FV S1 MAG BHC Merged Tx12 (AmpMrgS1)													
()													

ROP (ROP)	
-500	500
ft/hr	
RPM_Filtered (RPM)	
0	500
rpm	
Hole Deviation (DEVI)	
0	100
deg	
Hole Azimuth (HAZI)	
0	360
deg	

0.000	0.078	0.156	0.234	0.312	0.391	0.469	0.548	0.626	0.704	0.782	0.860	0.938	1.000
FV S2 MAG BHC Merged Tx12 (AmpMrgS2)													
()													

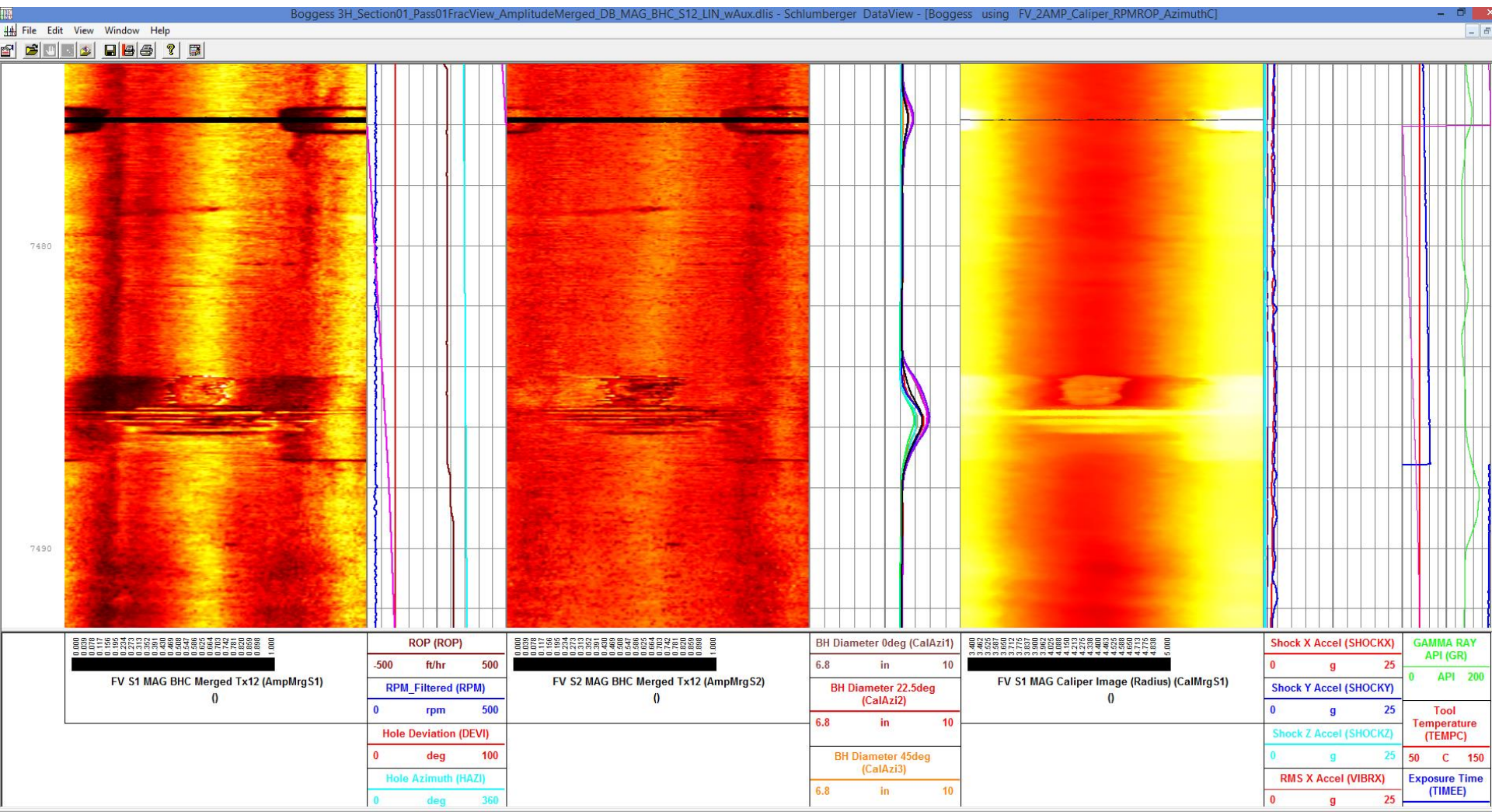
BH Diameter 0deg (CalAzi1)	
6.8	10
in	
BH Diameter 22.5deg (CalAzi2)	
6.8	10
in	
BH Diameter 45deg (CalAzi3)	
6.8	10
in	

0.000	0.078	0.156	0.234	0.312	0.391	0.469	0.548	0.626	0.704	0.782	0.860	0.938	1.000
FV S1 MAG Caliper Image (Radius) (CalMrgS1)													
()													

Shock X Accel (SHOCKX)	
0	25
g	
Shock Y Accel (SHOCKY)	
0	25
g	
Shock Z Accel (SHOCKZ)	
0	25
g	
RMS X Accel (VIBRX)	
0	25
g	

GAMMA RAY API (GR)	
0	200
API	
Tool Temperature (TEMPC)	
50	150
C	
Exposure Time (TIMEE)	

NE Boggress 3H– Job Summary. Section01. Pass01. BHC MAG S1 VS S2

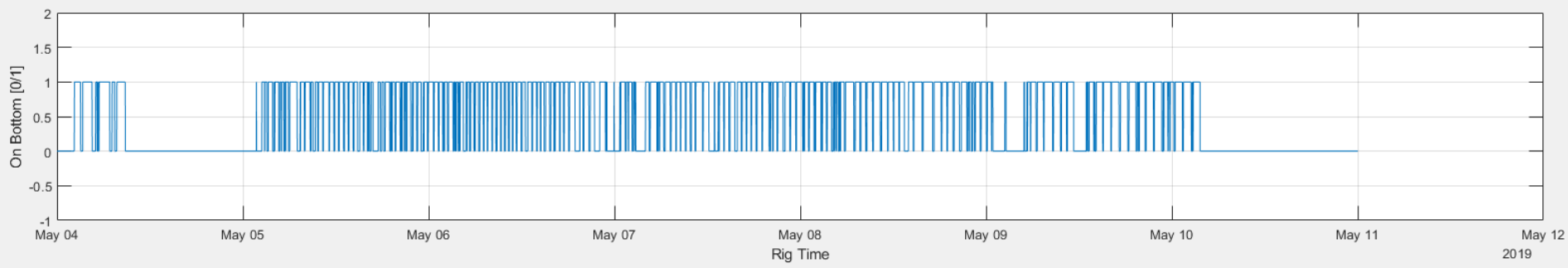
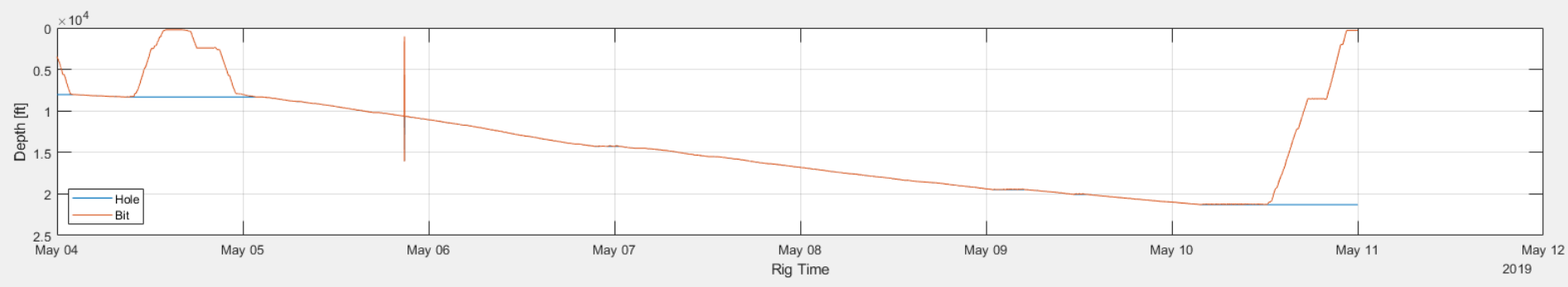


NNE Boggess 3H– Job Summary. Outline. Section 02 (lateral)

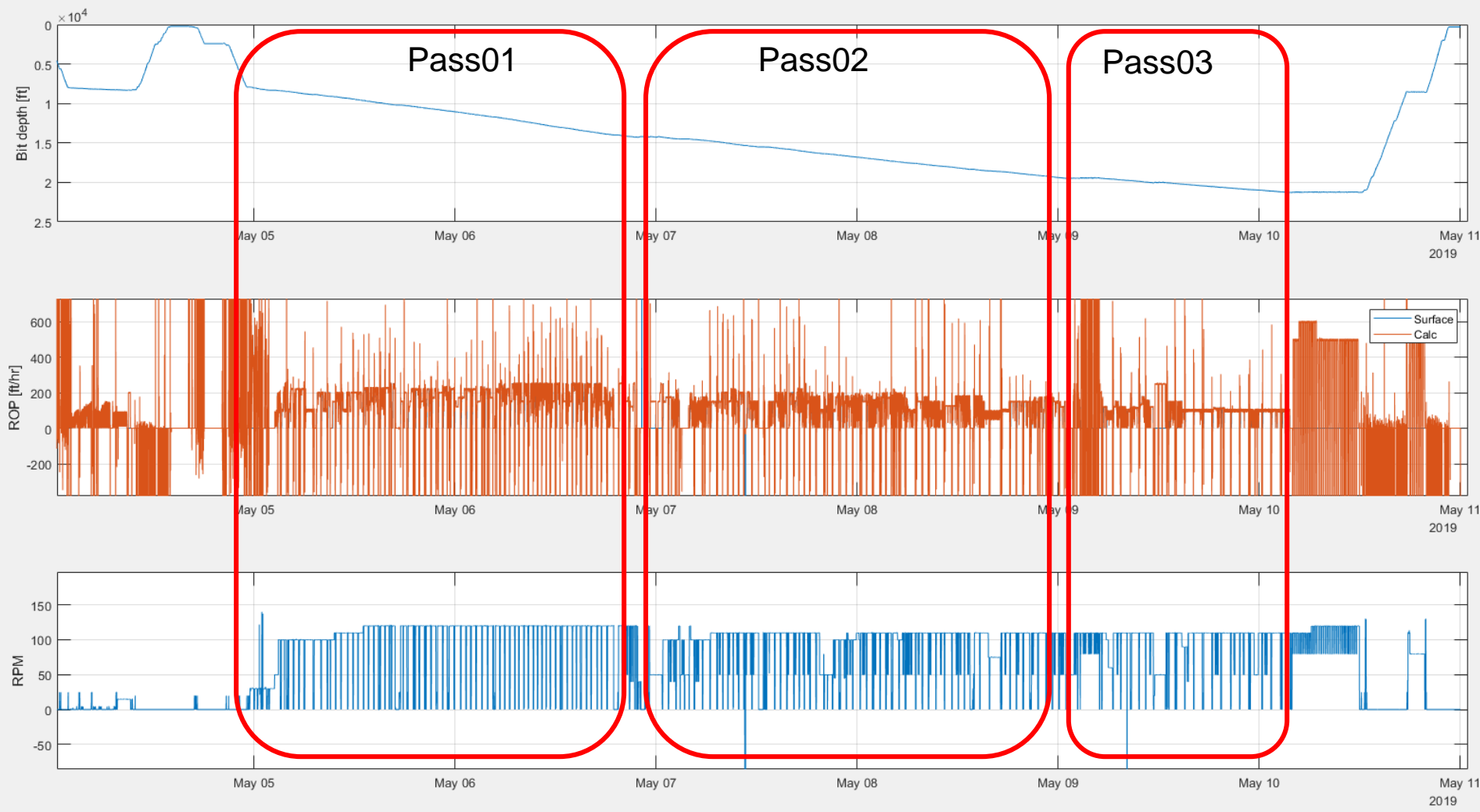


- **Section 02 (Lateral),**
 - **Pass01 (drill, part 1)**
 - **Pass02 (drill, part 2)**
 - **Pass03 (drill, part 3)**
 - **FV675007**

NNE Boggess 3H– Job Summary. Section02. Pason. On Bottom Status.

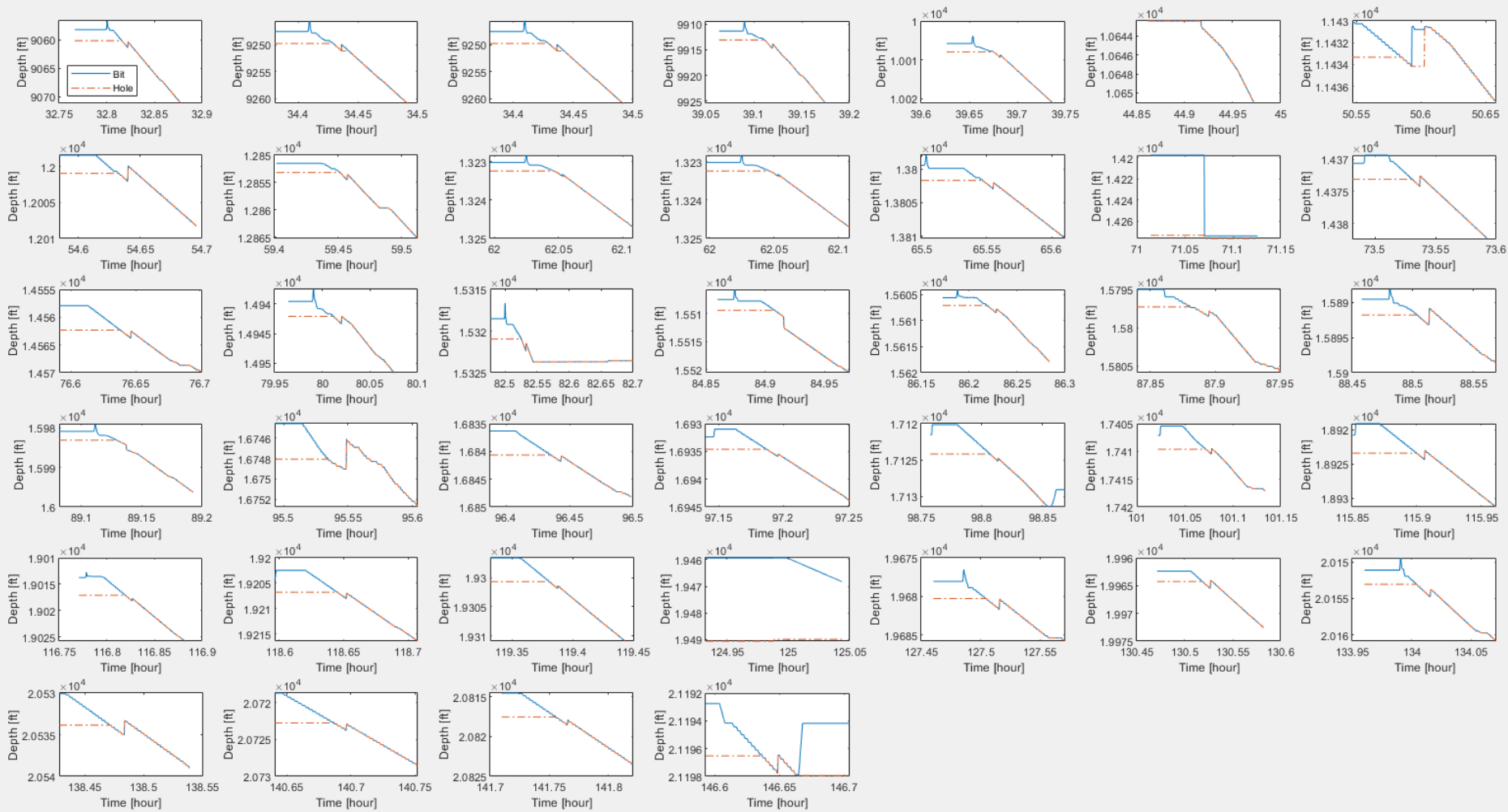


NNE Boggess 3H– Job Summary. Section02. Passes.



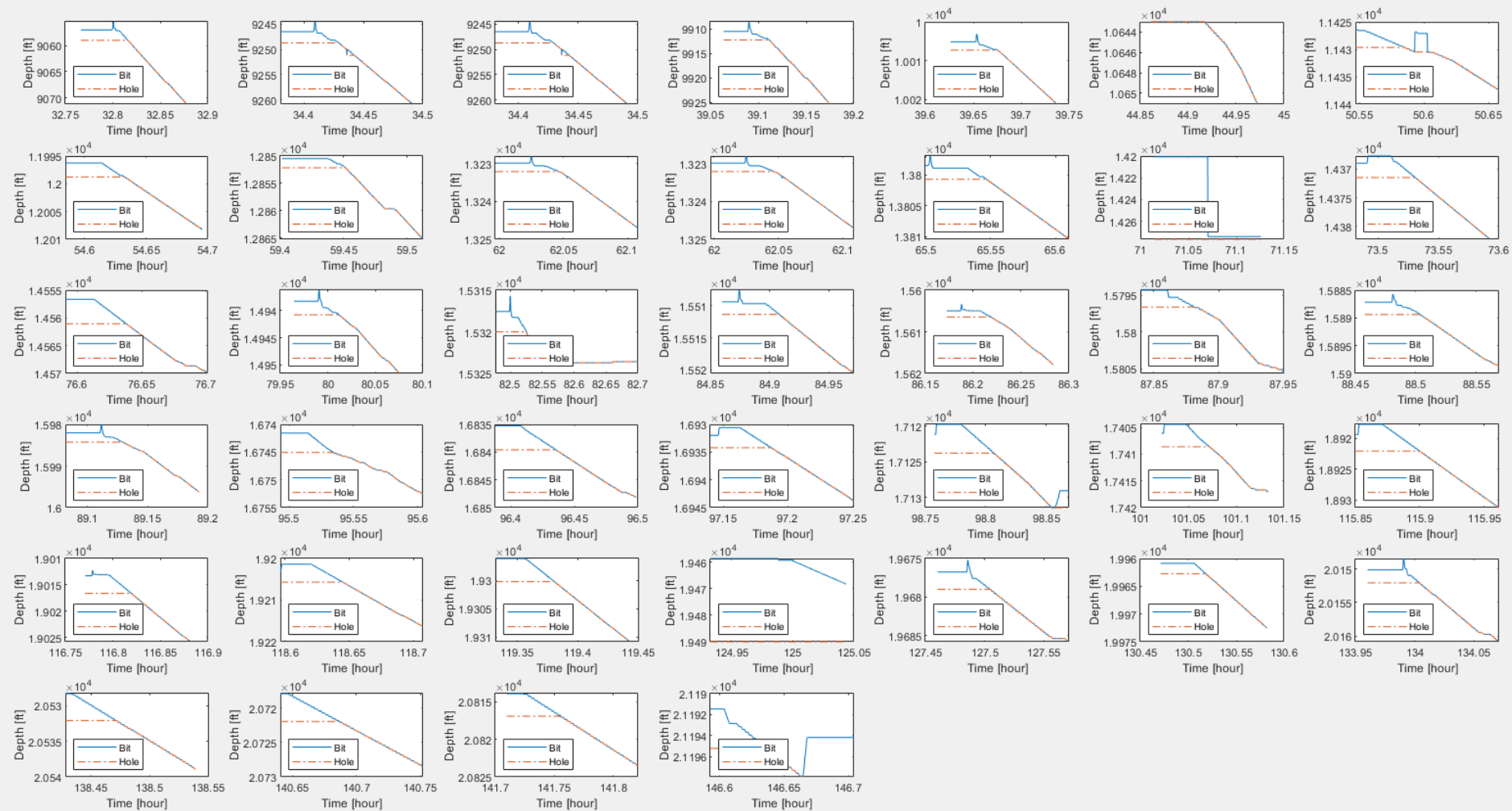
NEE Boggess 3H– Job Summary.

Section02. Pason. Hole Depth Jumps >0.3 ft

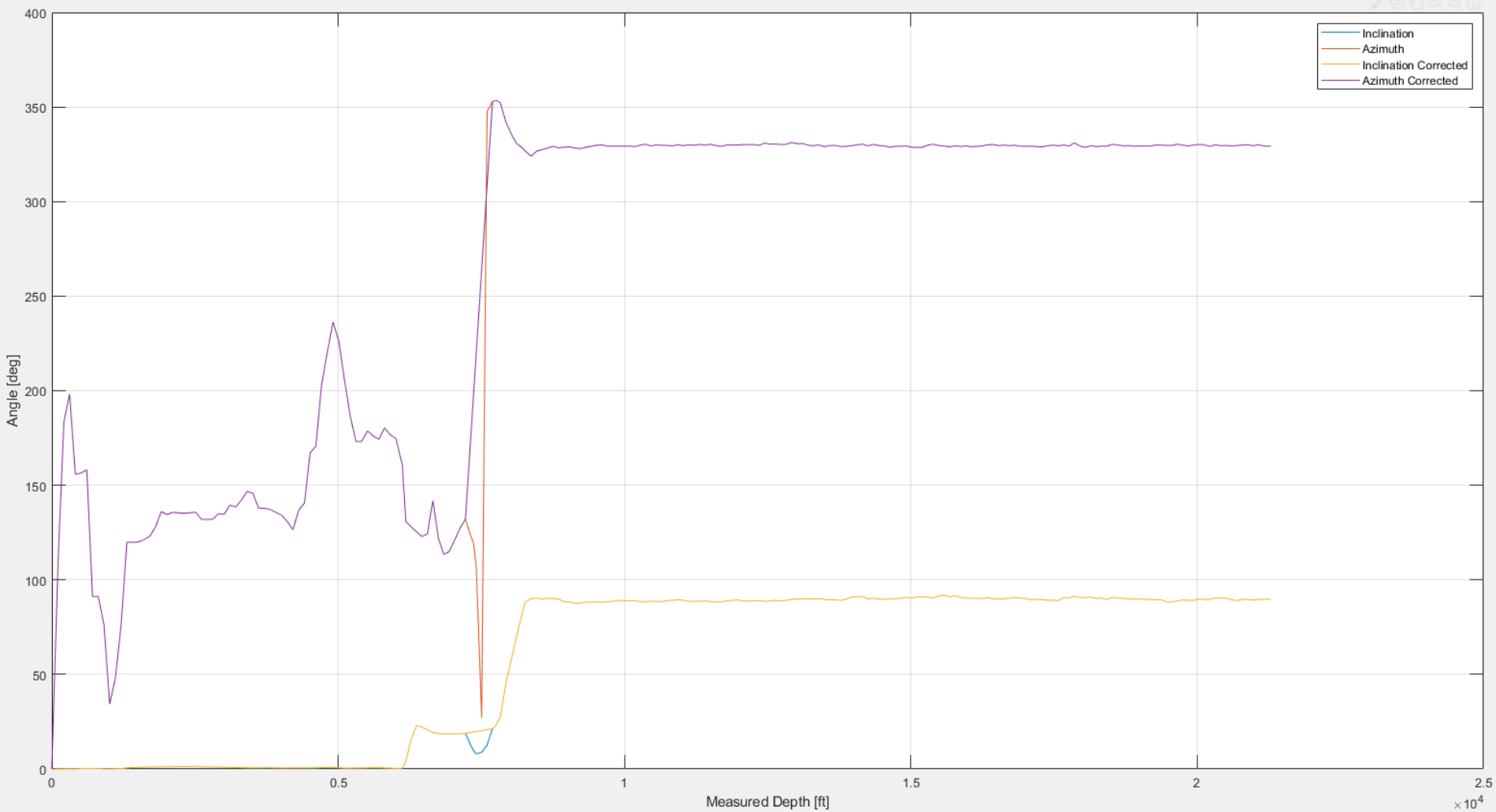


NNE Bogges 3H- Job Summary.

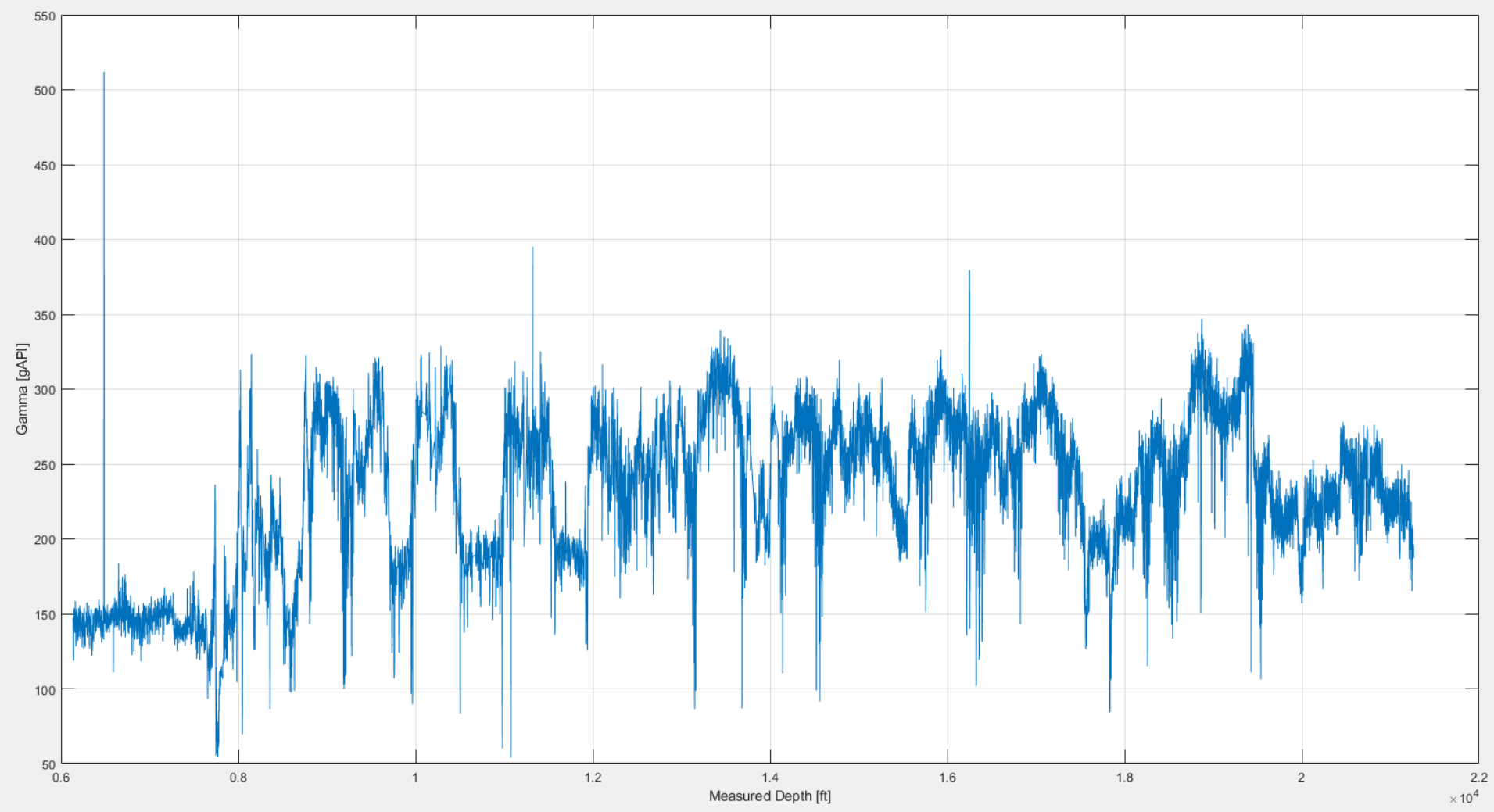
Section02. Pason. Hole Depth Jumps >0.5 ft Correction



NNE Boggess 3H– Job Summary. Section02. MWD. Survey



NNE Boggess 3H– Job Summary. Section02. MWD. Gamma Ray



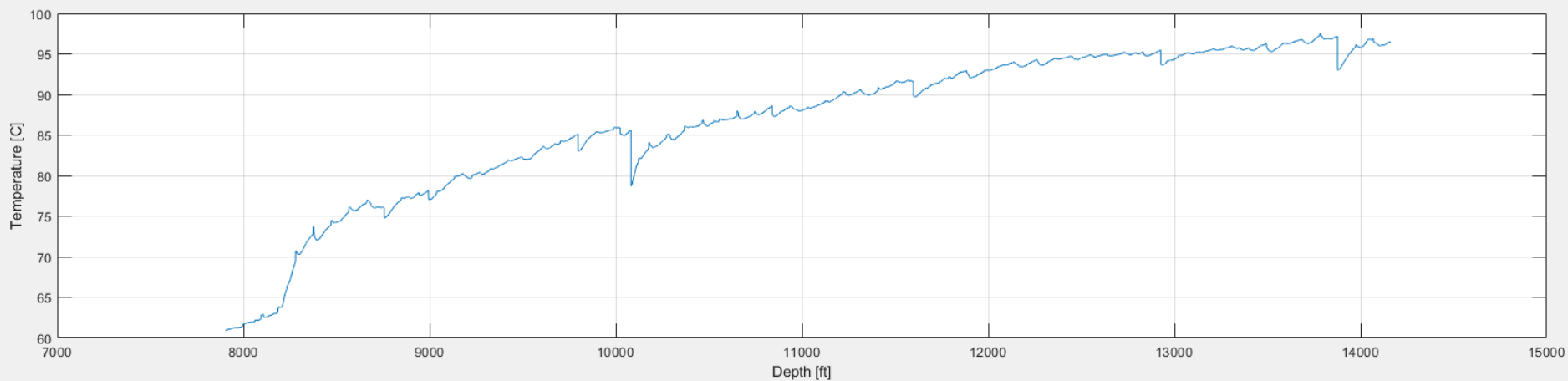
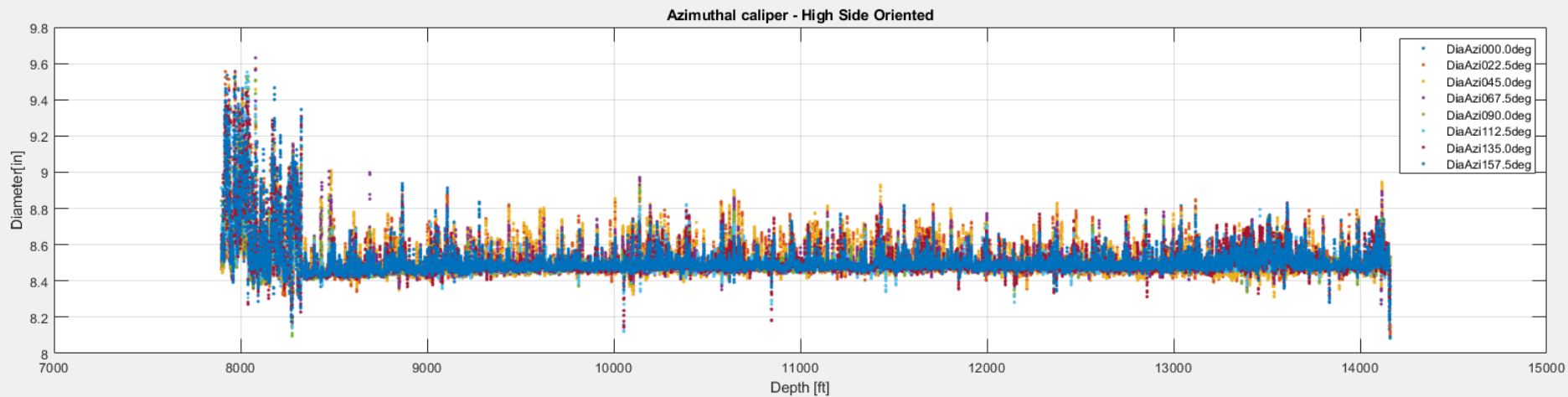
NNE Boggess 3H– Job Summary.

Section 02. Pass01 (drill)

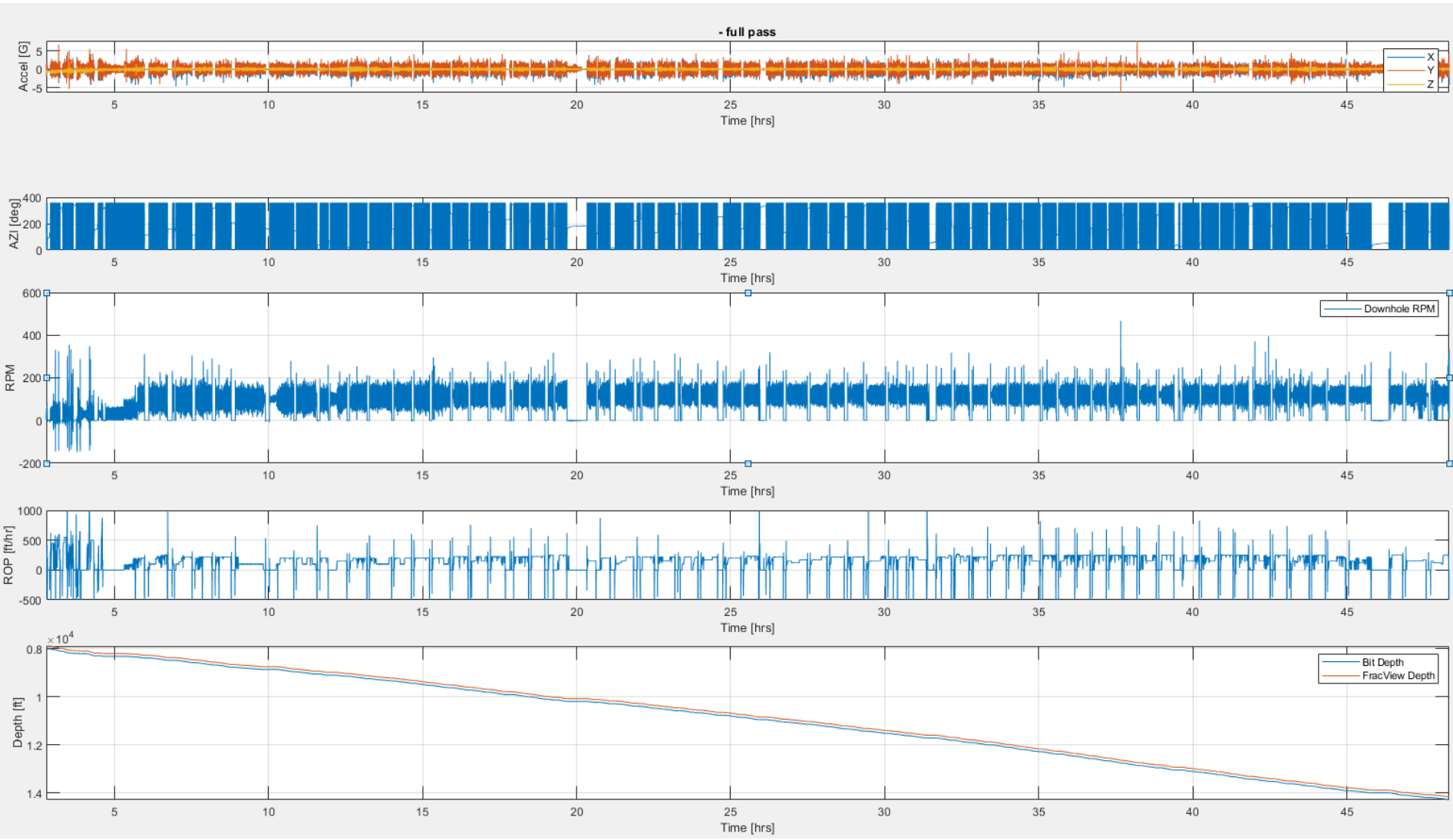


- **FV Sensor at 7,900 to 14,147 ft**
- **FV Sensor to Bit Distance ~115 ft**

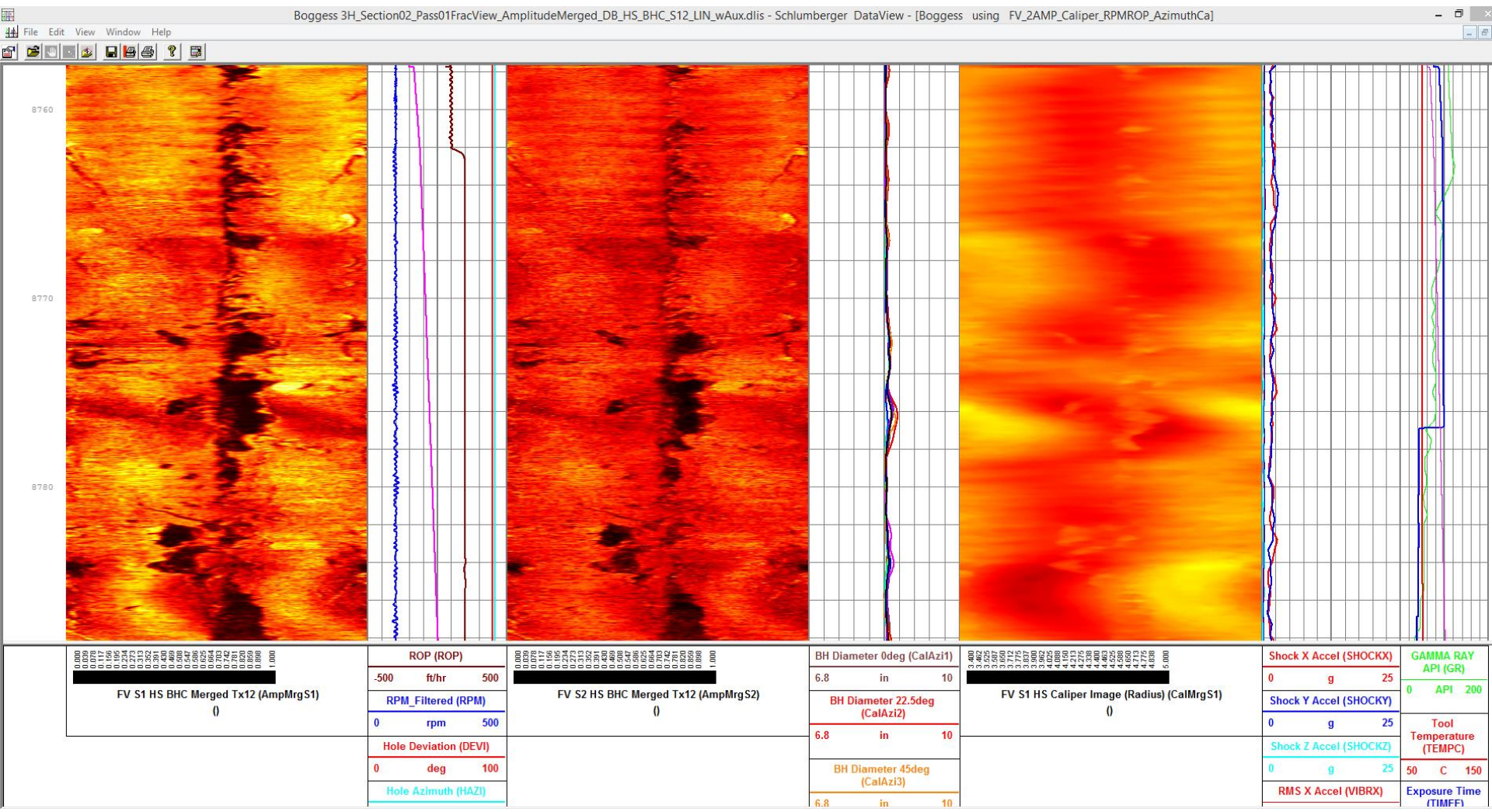
NE Boggess 3H– Job Summary. Section02. Pass01. Azimuthal Calipers.



NEE Boggess 3H– Job Summary. Section02. Pass01. Motion Dynamics.



NNE Boggess 3H– Job Summary. Section02. Pass01. BHC HS S1 vs S2

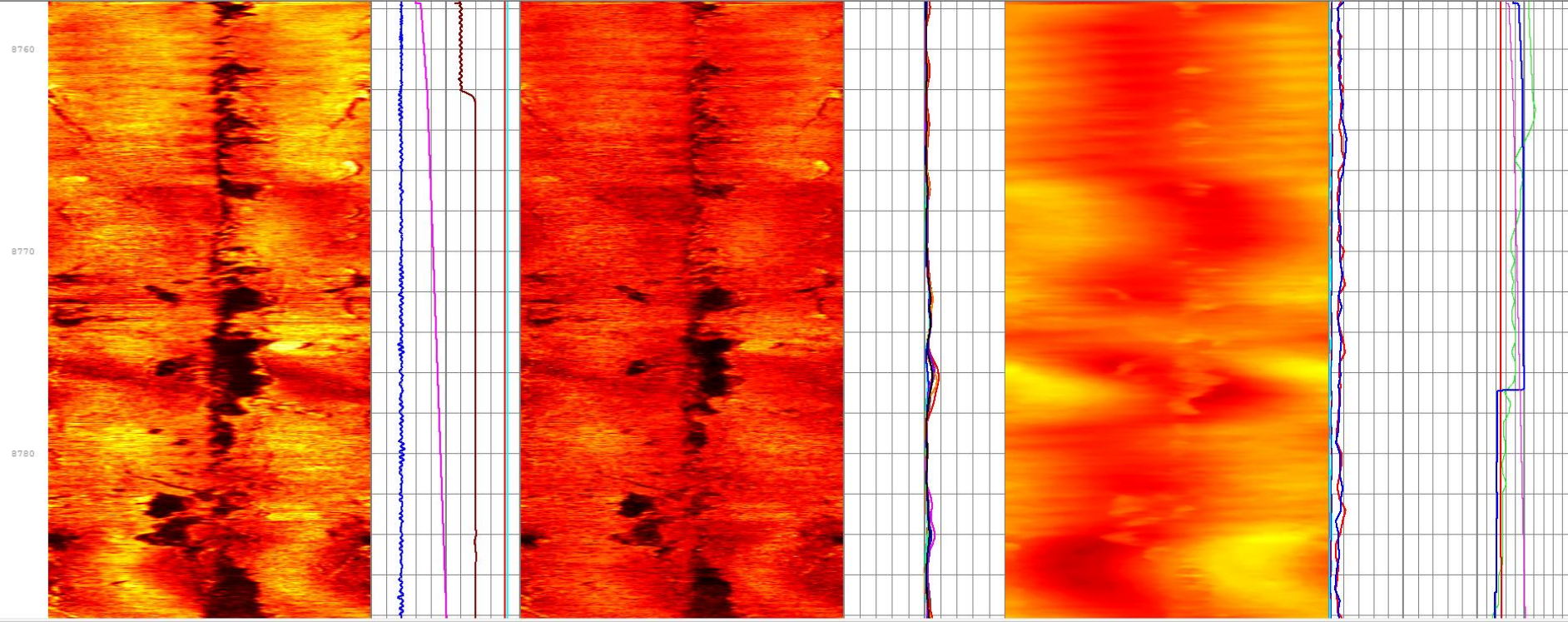


NE Boggress 3H– Job Summary. Section02. Pass01. BHC HS S1 vs S2



Boggress 3H_Section02_Pass01FracView_AmplitudeMerged_DB_HS_BHC_S12_LIN_wAux.dlis - Schlumberger DataView - [Boggress using FV_2AMP_Caliper_RPMROP_AzimuthCa]
 Boggress 3H_Section02_Pass01FracView_AmplitudeMerged_DB_HS_BHC_S12_LIN_wAux.dlis - Schlumberger DataView - [Boggress using FV_2AMP_Caliper_RPMROP_AzimuthCa]

File Edit View Window Help



0.000	0.000
0.078	0.157
0.195	0.391
0.273	0.547
0.333	0.699
0.391	0.782
0.440	0.820
0.500	0.859
0.556	0.898
0.625	0.937
0.702	0.976
0.782	1.000
0.820	
0.859	
0.898	
0.937	
0.976	
1.000	

FV S1 HS BHC Merged Tx12 (AmpMrgS1)
()

ROP (ROP)	
-500	ft/hr 500
RPM_Filtered (RPM)	
0	rpm 500
Hole Deviation (DEVI)	
0	deg 100
Hole Azimuth (HAZI)	

0.000	0.000
0.059	0.117
0.117	0.195
0.195	0.273
0.273	0.333
0.333	0.391
0.391	0.440
0.440	0.499
0.499	0.556
0.556	0.625
0.625	0.699
0.699	0.742
0.742	0.782
0.782	0.820
0.820	0.859
0.859	0.898
0.898	0.937
0.937	0.976
0.976	1.000

FV S2 HS BHC Merged Tx12 (AmpMrgS2)
()

BH Diameter 0deg (CalAzi1)		
6.8	in	10
BH Diameter 22.5deg (CalAzi2)		
6.8	in	10
BH Diameter 45deg (CalAzi3)		
6.8	in	10

3.462	0.000
3.625	0.059
3.650	0.117
3.712	0.195
3.837	0.273
3.960	0.333
4.025	0.391
4.213	0.440
4.338	0.499
4.460	0.556
4.625	0.625
4.650	0.699
4.713	0.742
4.837	0.782
4.960	0.820
5.000	0.859
5.000	0.898
5.000	0.937
5.000	0.976
5.000	1.000

FV S1 HS Caliper Image (Radius) (CalMrgS1)
()

Shock X Accel (SHOCKX)		GAMMA RAY API (GR)	
0	g 25	0	API 200
Shock Y Accel (SHOCKY)		Tool Temperature (TEMPC)	
0	g 25	50	C 150
Shock Z Accel (SHOCKZ)		Exposure Time (TIMFF)	
0	g 25		
RMS X Accel (VIBRX)			

NNE Boggess 3H– Job Summary.

Section 02. Pass02 (drill)

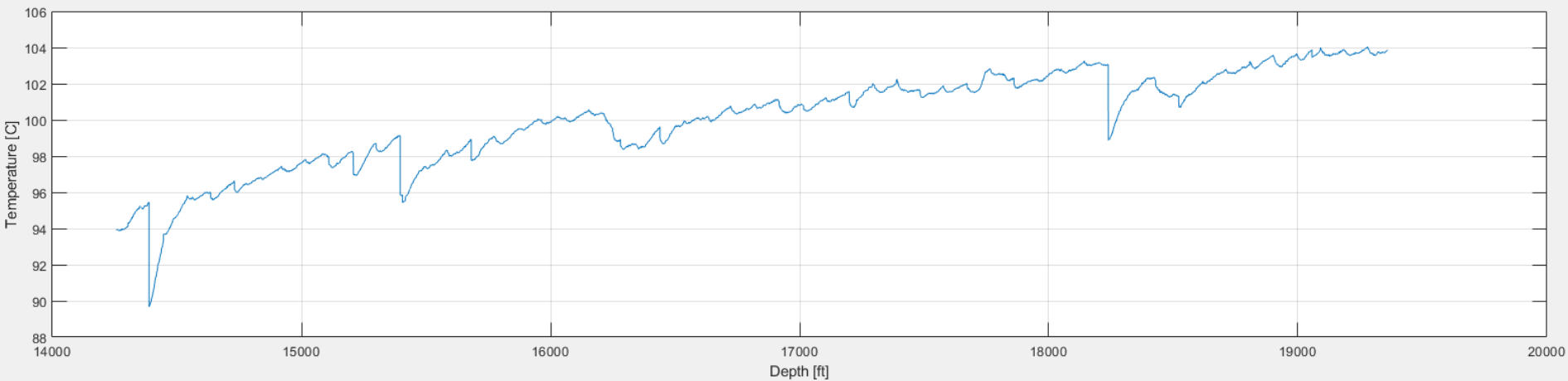
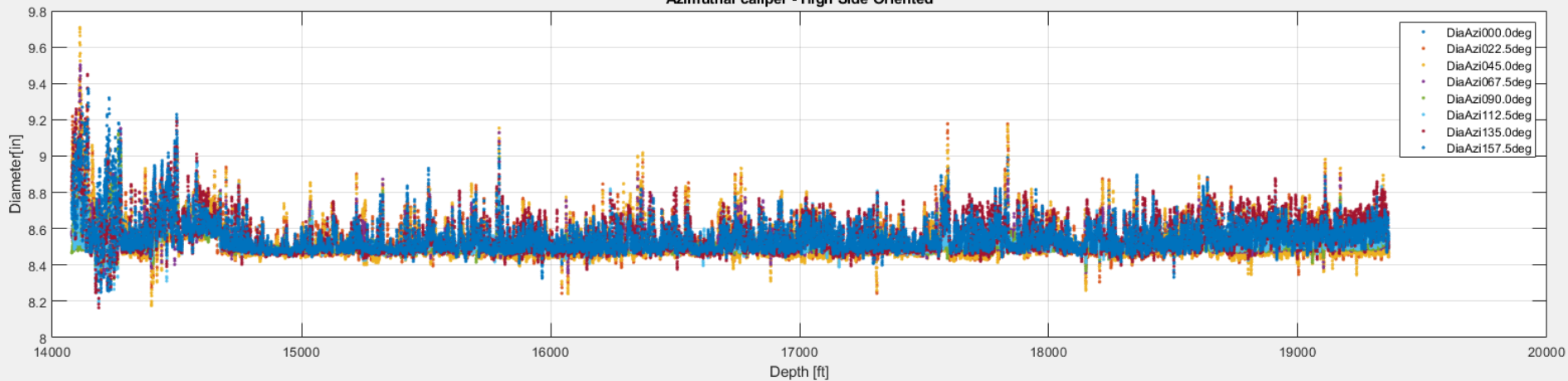


- **FV Sensor at 14,078 to 19,365 ft**
- **FV Sensor to Bit Distance ~115 ft**

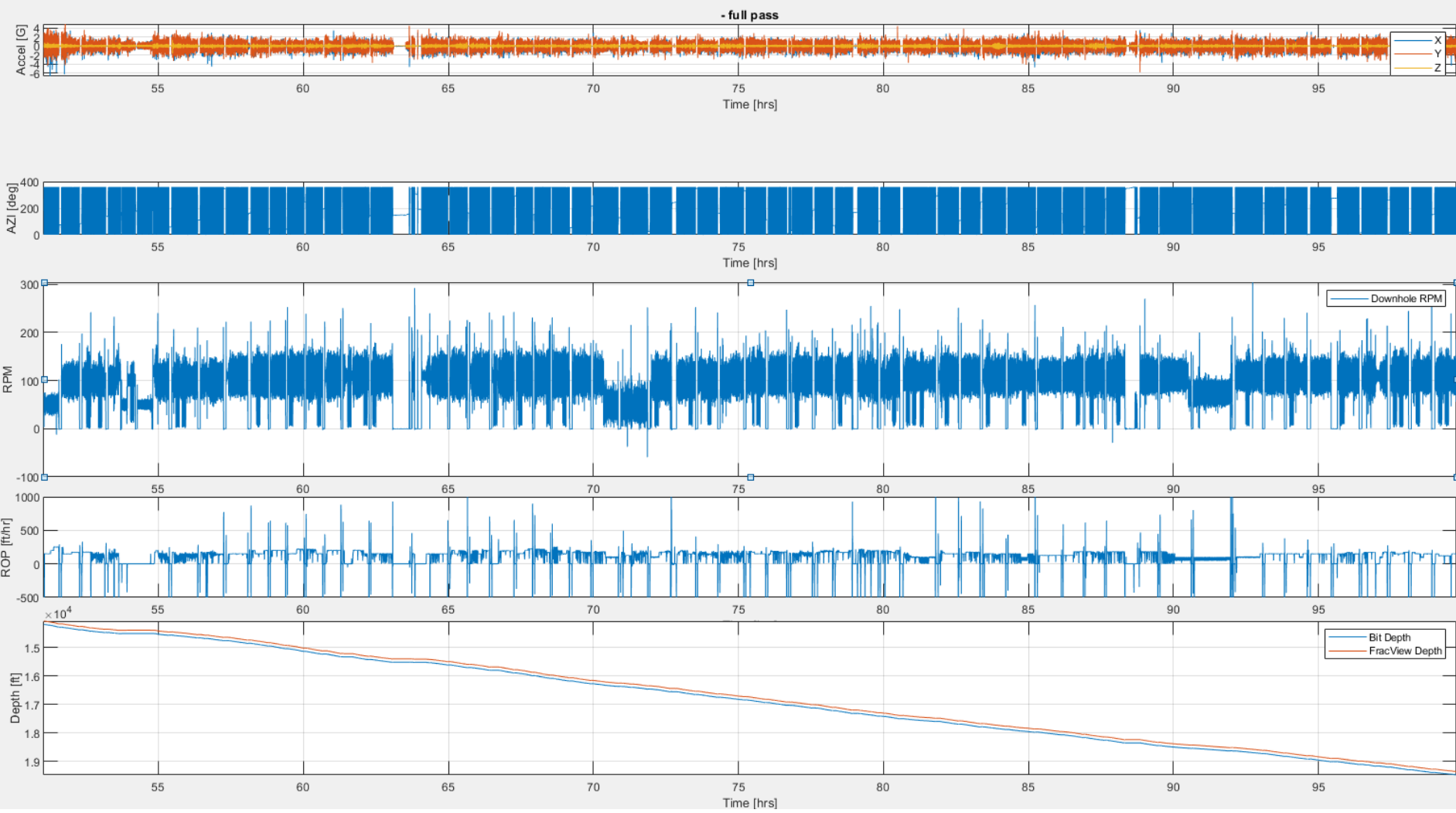
NE Boggess 3H– Job Summary. Section02. Pass02. Azimuthal Calipers.



Azimuthal caliper - High Side Oriented



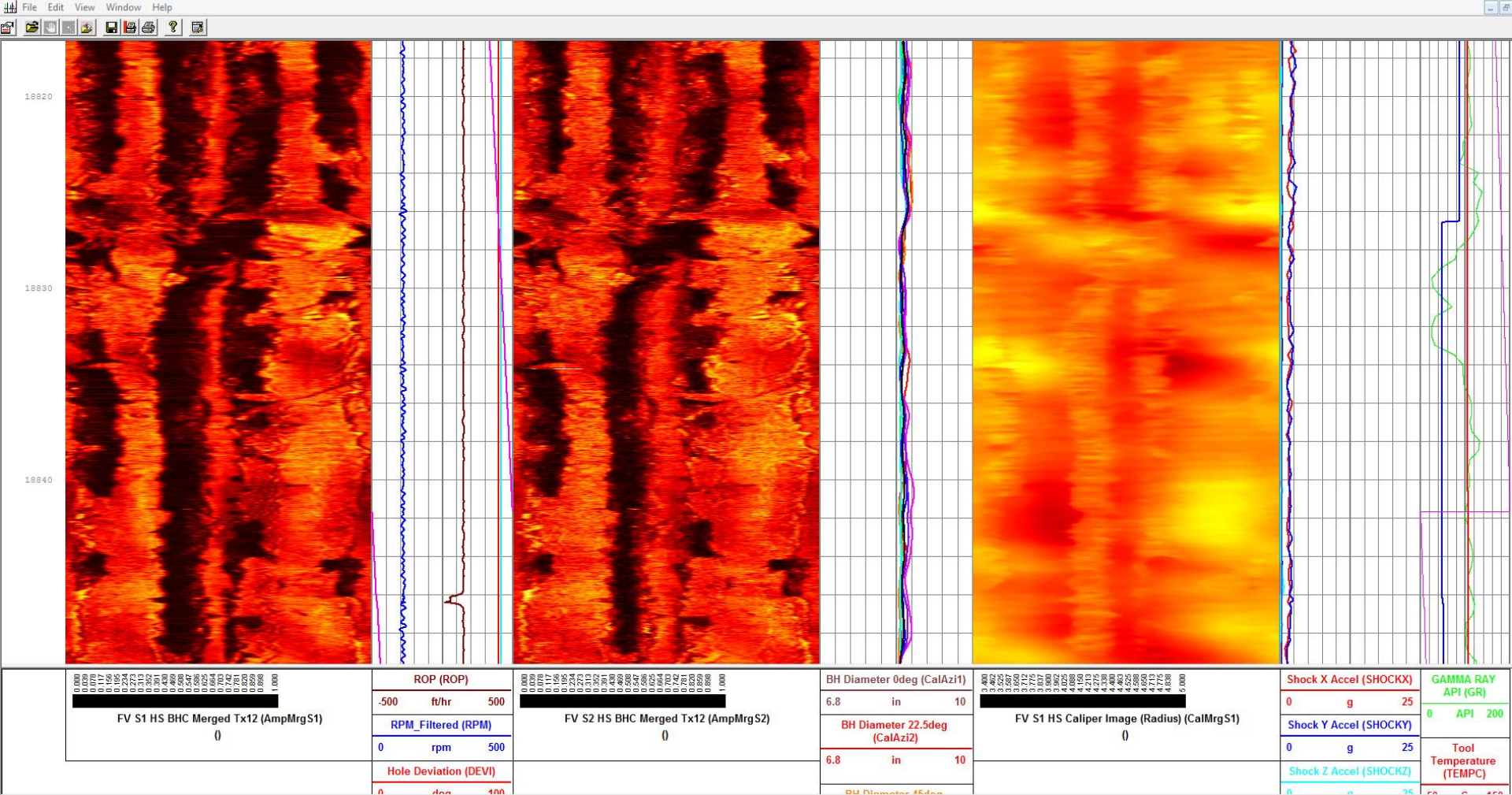
NE Boggess 3H– Job Summary. Section02. Pass02. Motion Dynamics.



NE Boggess 3H– Job Summary. Section02. Pass02. BHC HS S1 vs S2

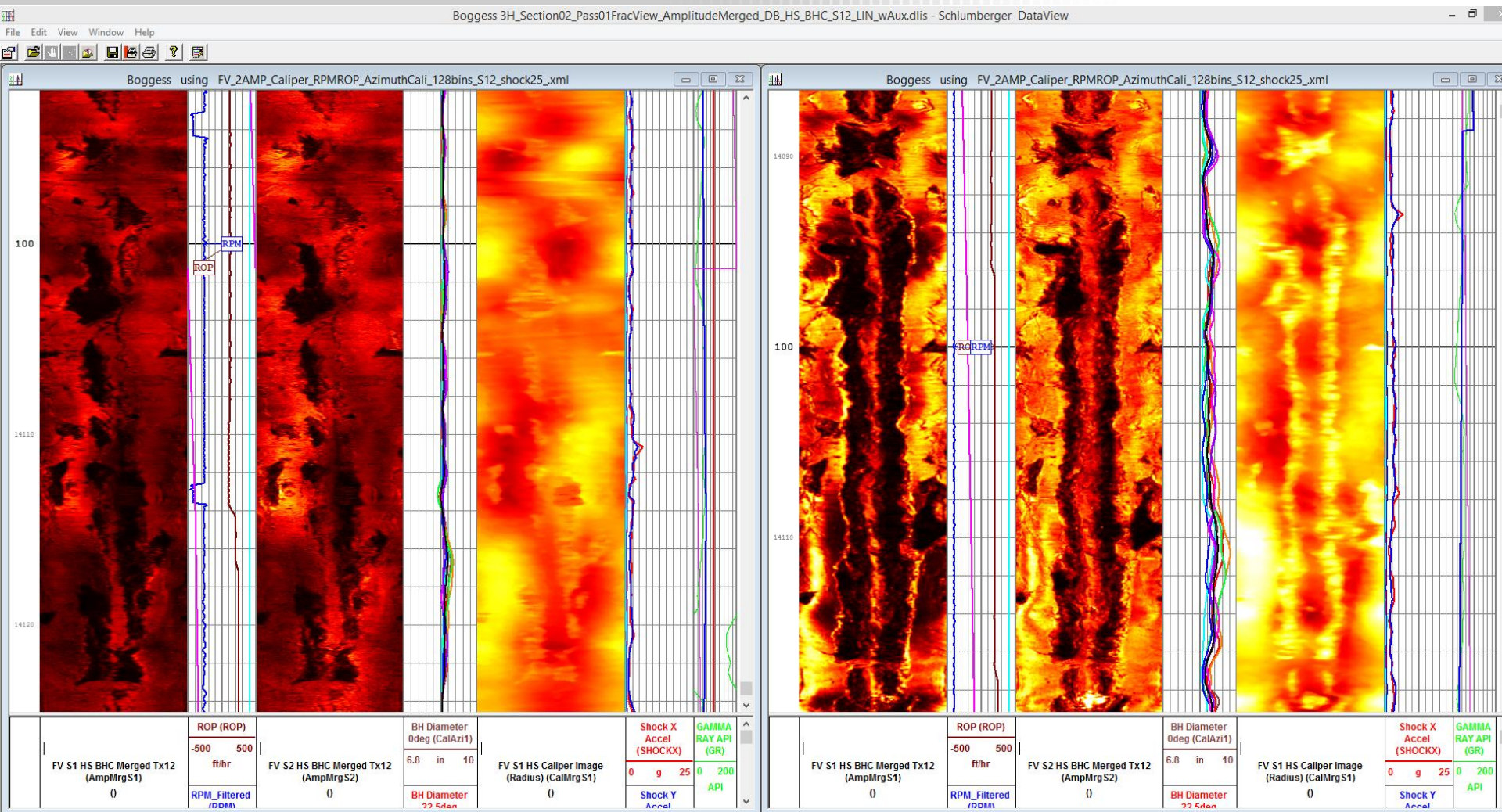


Boggess 3H_Section02_Pass02FracView_AmplitudeMerged_DB_HS_BHC_S12_LIN_wAux.dlls - Schlumberger DataView - [Boggess using FV_2AMP_Caliper_RPMROP_AzimuthCa]



18,820-18,850

NE Boggress 3H– Job Summary. Section02. Pass02 vs Pass01



Pass01

18,820-18,850

Pass02

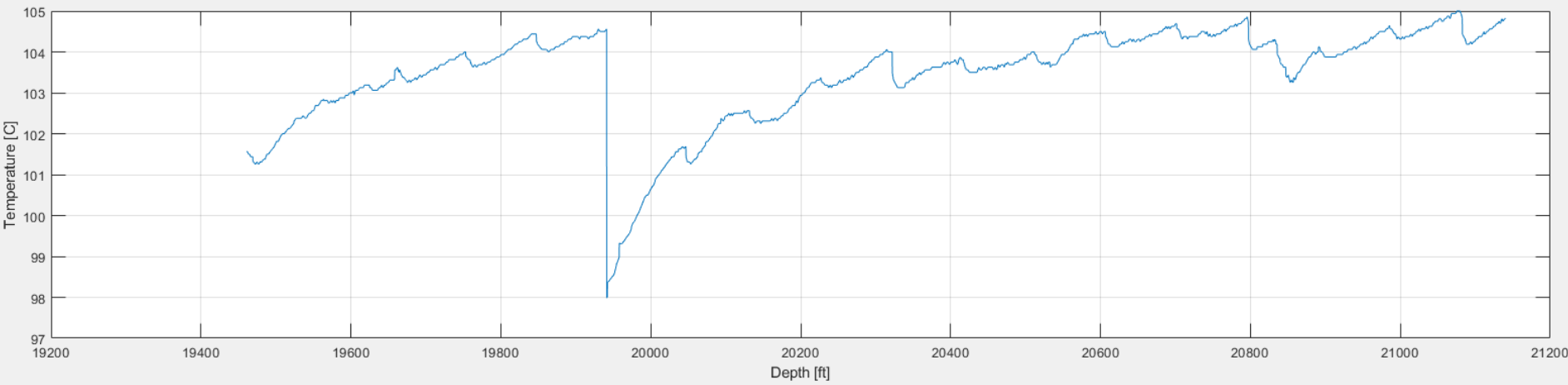
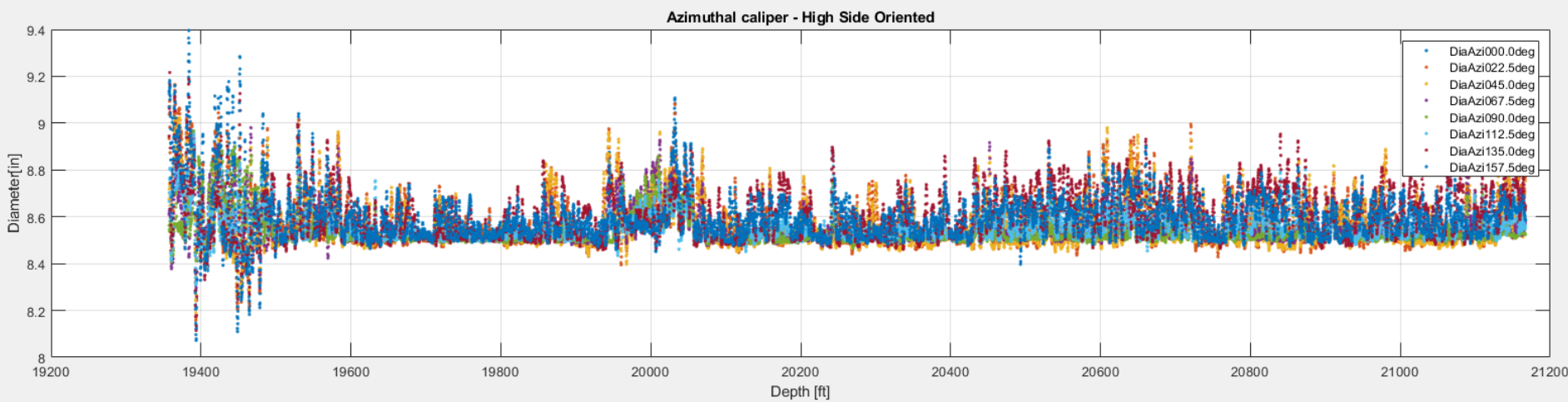
NNE Boggess 3H– Job Summary.

Section 02. Pass03 (drill)

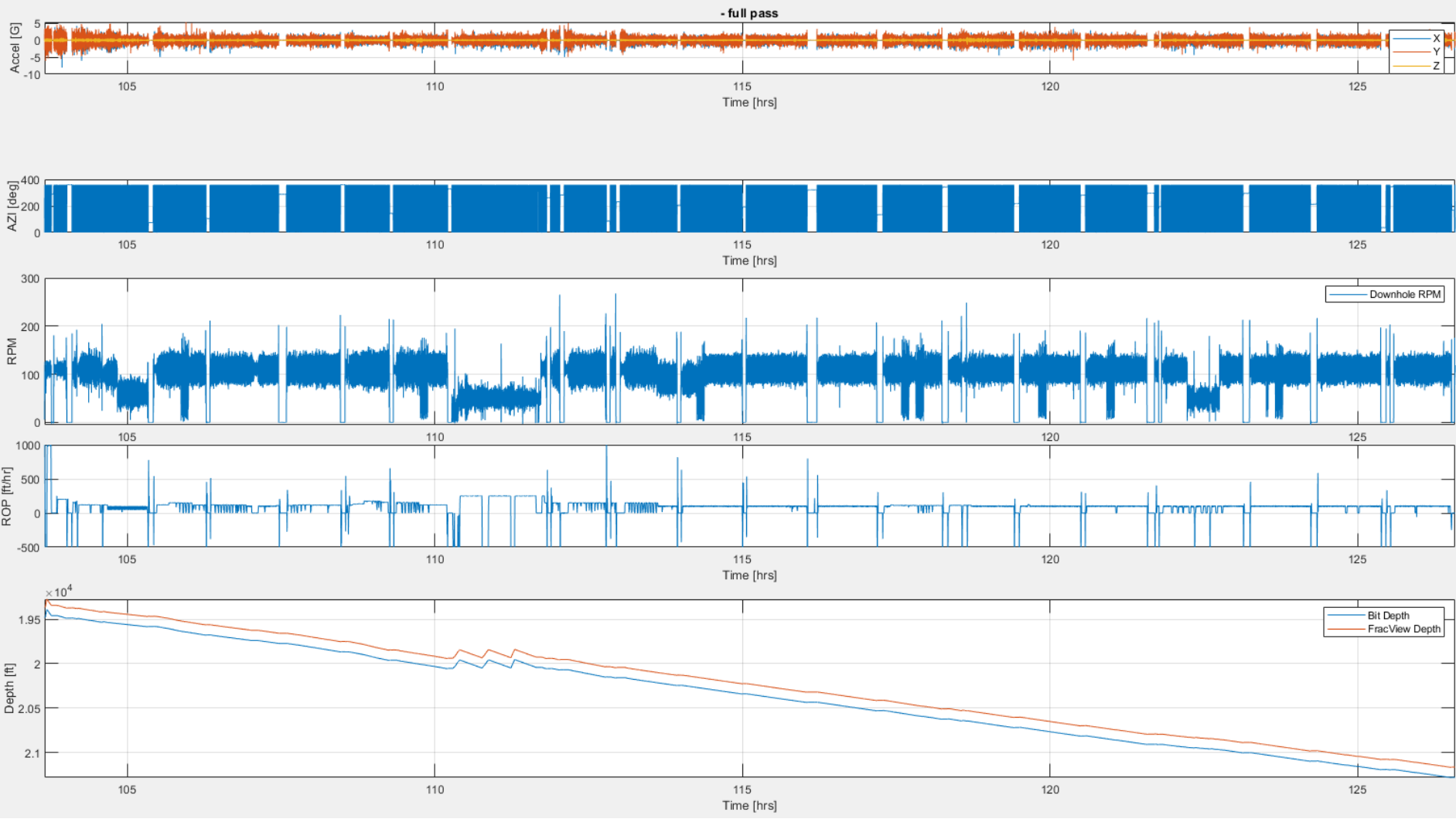


- **FV Sensor at 19,360 to 21,167 ft**
- **FV Sensor to Bit Distance ~115 ft**

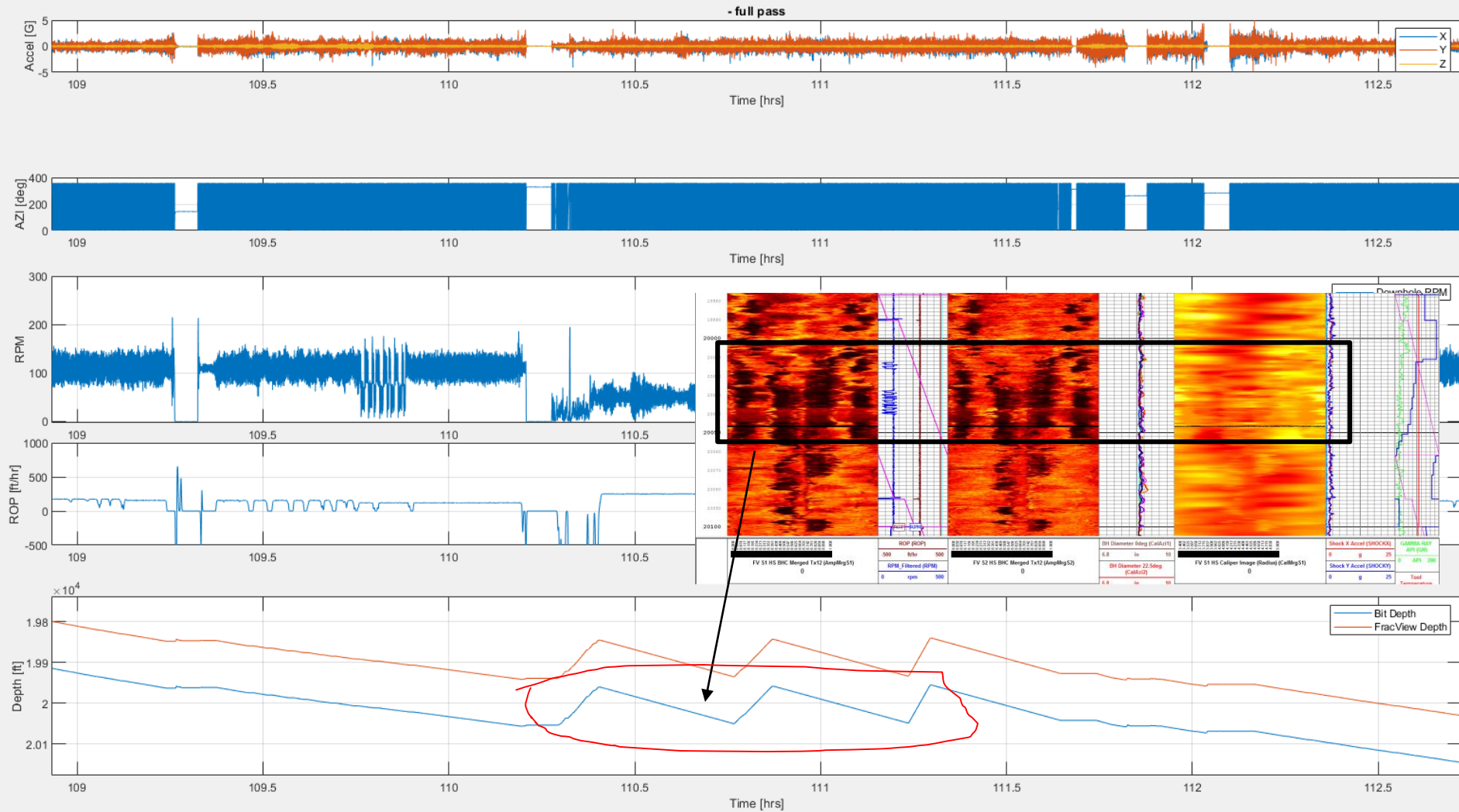
NE Bogges 3H– Job Summary. Section02. Pass03. Azimuthal Calipers.



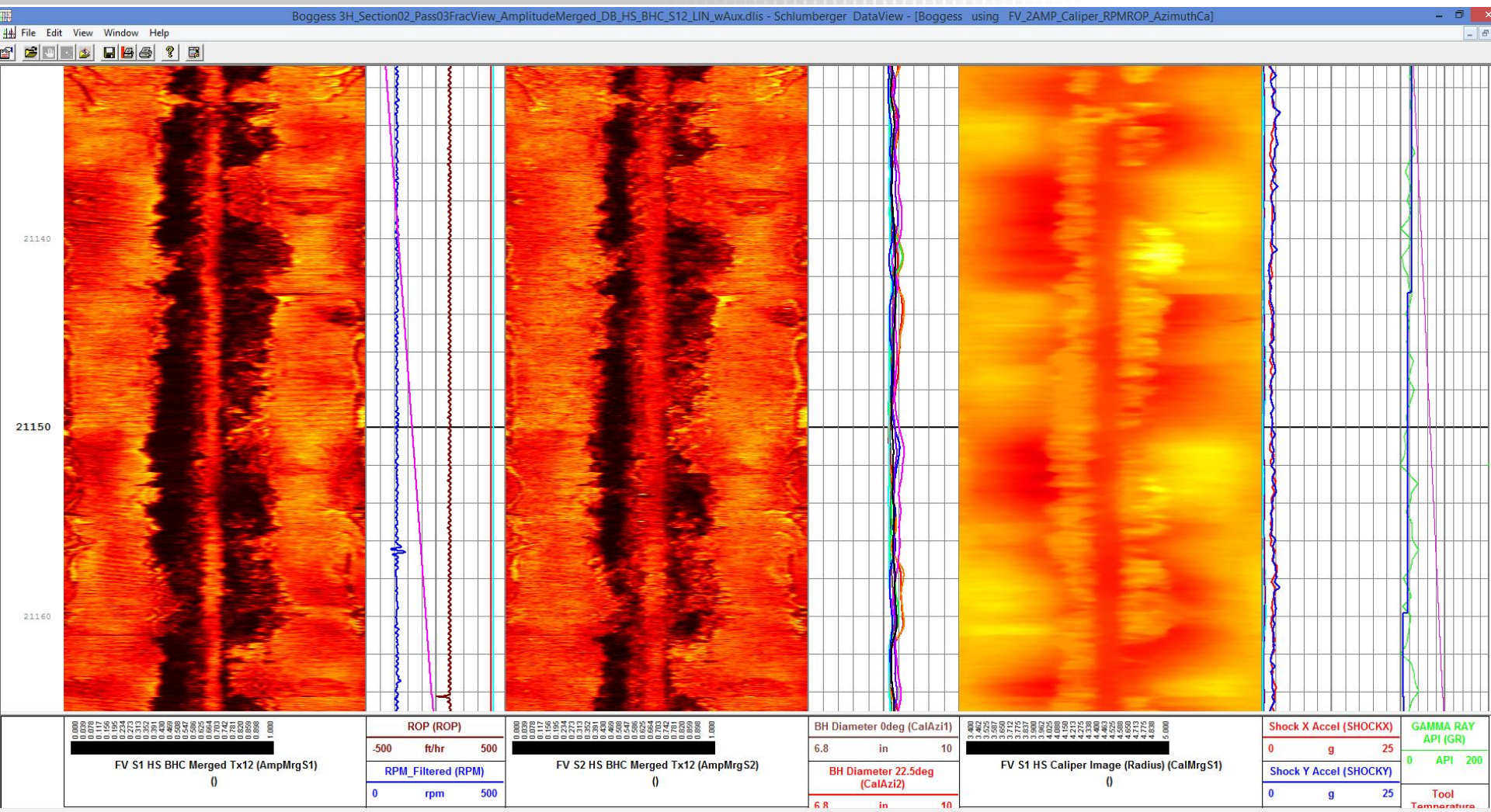
NE Boggess 3H– Job Summary. Section02. Pass03. Motion Dynamics.



NNE Boggess 3H– Job Summary. Section02. Pass03. Motion Dynamics (zoom in)



NNE Boggess 3H– Job Summary. Section02. Pass03. BHC HS S1 vs S2



21,130-21,165

NNE Boggess 3H– Job Summary.



Thank You