



# NNE\_Boggess\_17H–Job Summary Sections 01 (vertical, curve, lateral)

**02 July 2019**

Prepared by:  
**Dmitry Avdeev**

DRILLING  
OPERATIONS

DRILLING  
SOLUTIONS

DRILLING  
EQUIPMENT

 **PetroMar**  
A NABORS COMPANY

# NNE\_Boggess\_17H– Job Summary. Section01.

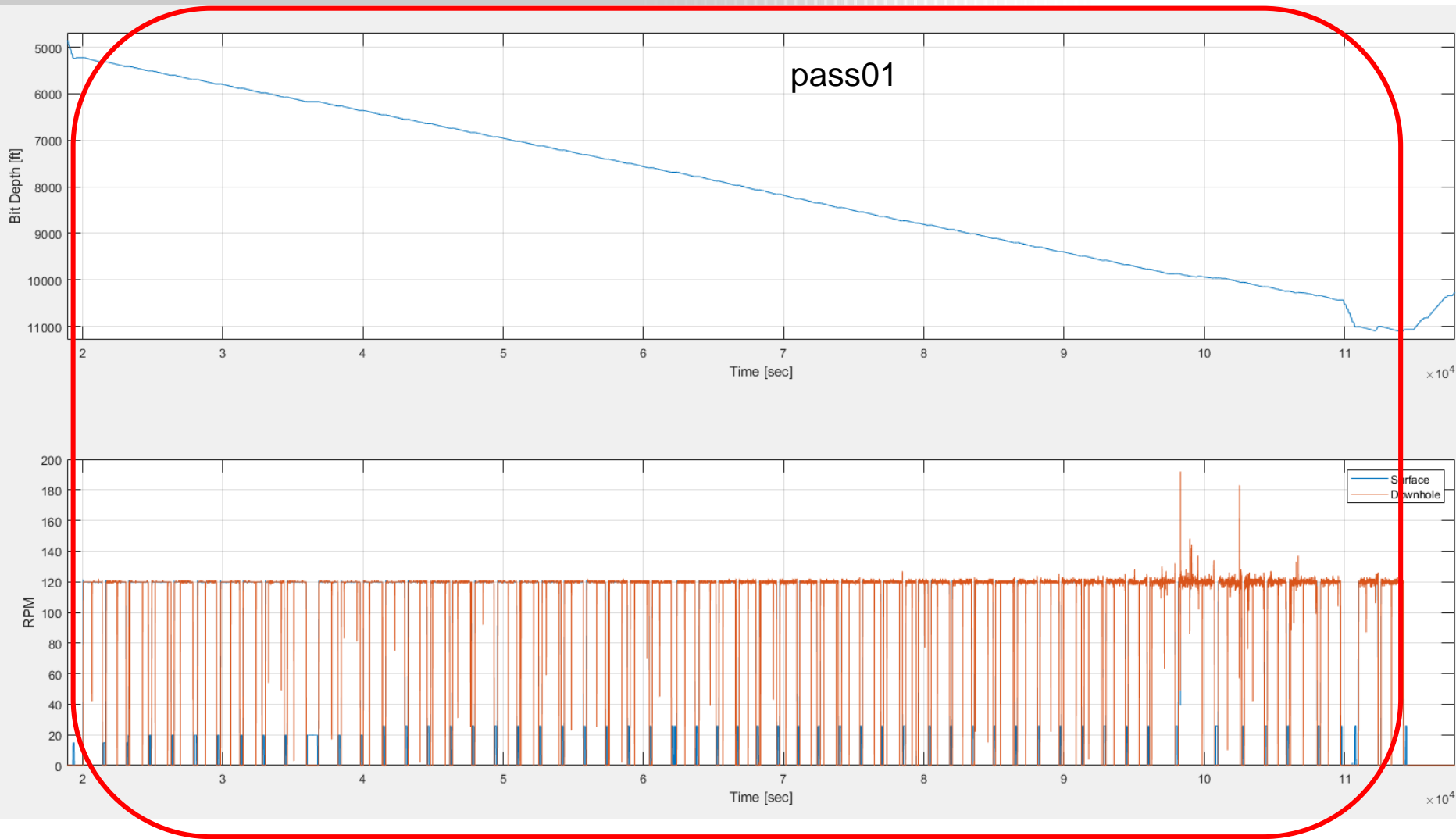


- **Section 01** (vertical, curve, lateral)
  - **Pass01**

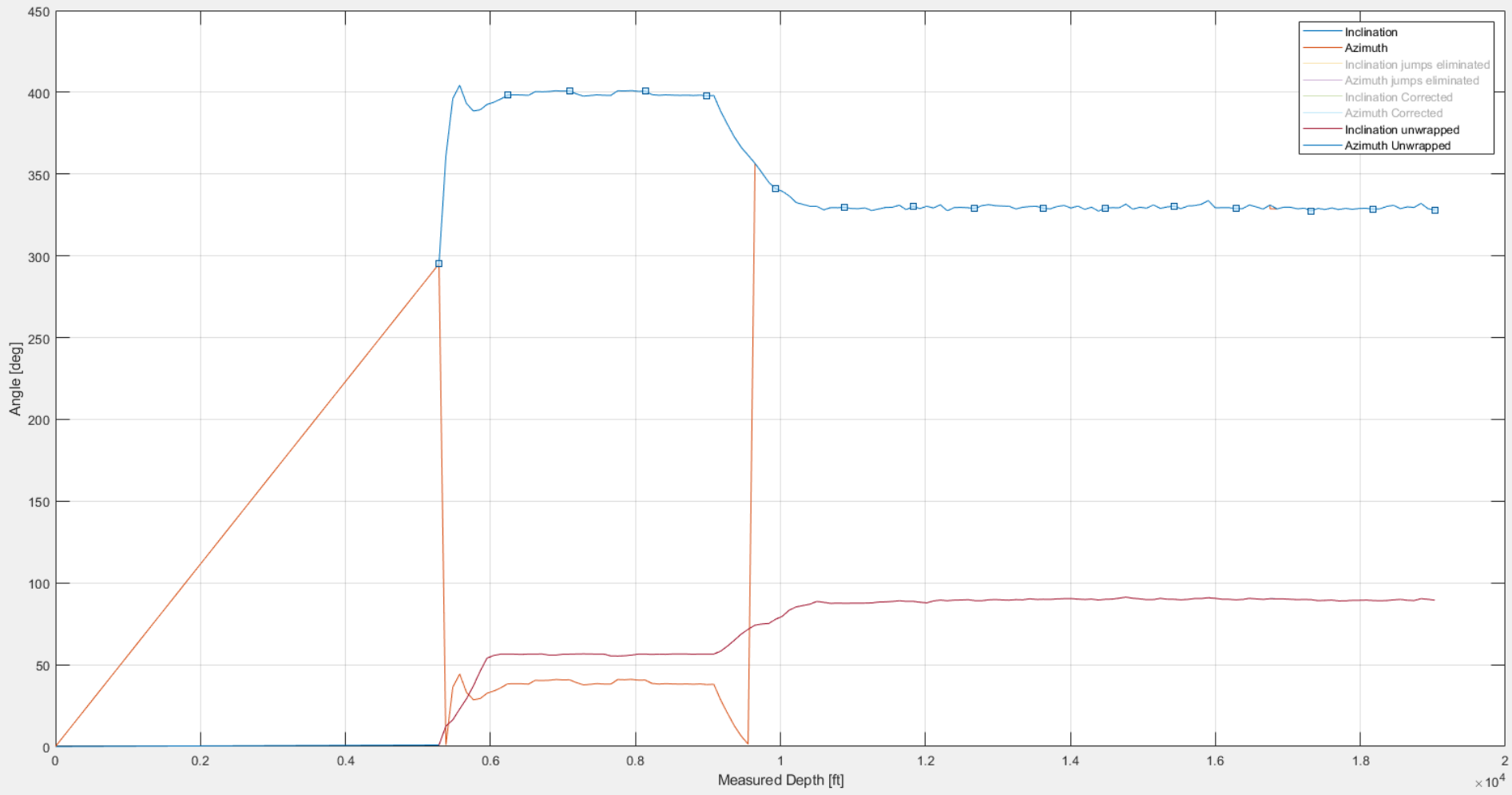
# NNE\_Boggess\_17H– Job Summary. Section01. Pass01.



# NNE\_Boggess\_17H– Job Summary. Section01. Pass01.



# NNE\_Boggess\_17H– Job Summary. Section01. Inclination & Azimuth.



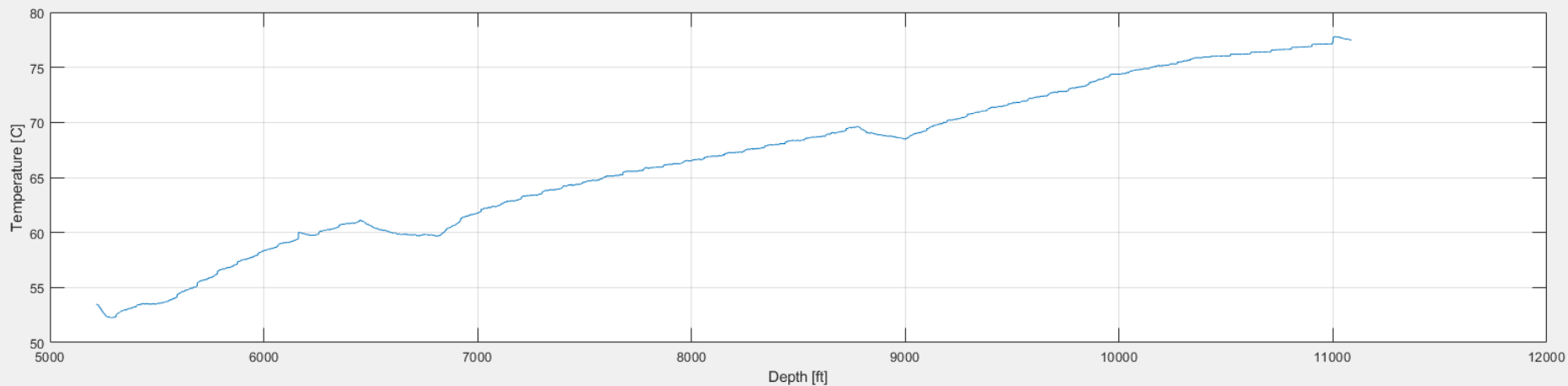
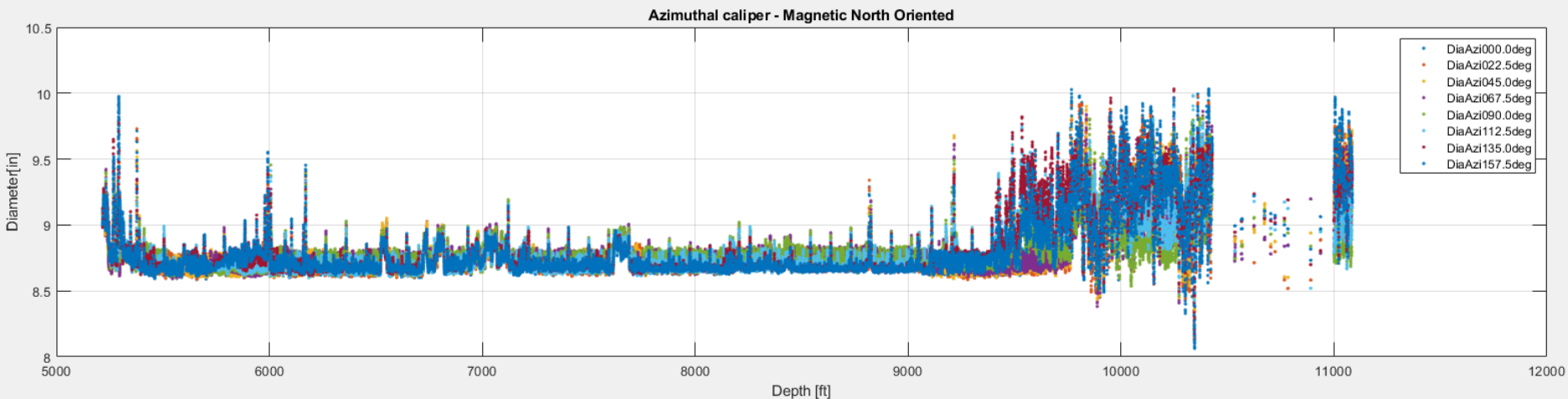
# NNE\_Bogges\_17H– Job Summary.

## Section 01. Pass01 (vertical, curve, lateral)

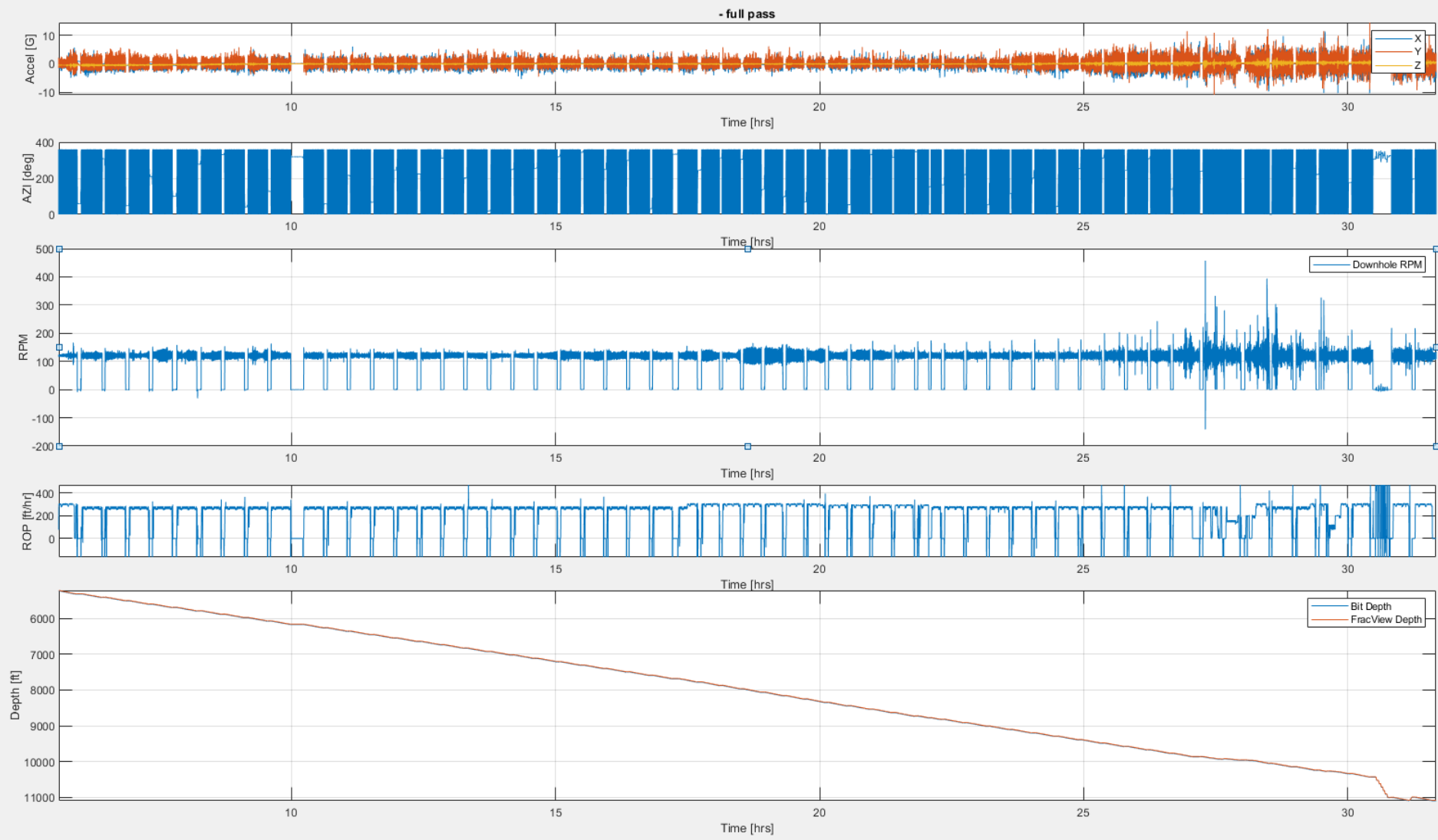


- **FV Sensor at 5,216 to 11,086 ft**
- **FV Sensor to Bit Distance ~ 8.89 ft**
- **“Nice Drilling” – Mostly No Stick-Slip**

# NE\_Bogges\_17H- Job Summary. Section01. Pass01. Azimuthal Calipers.

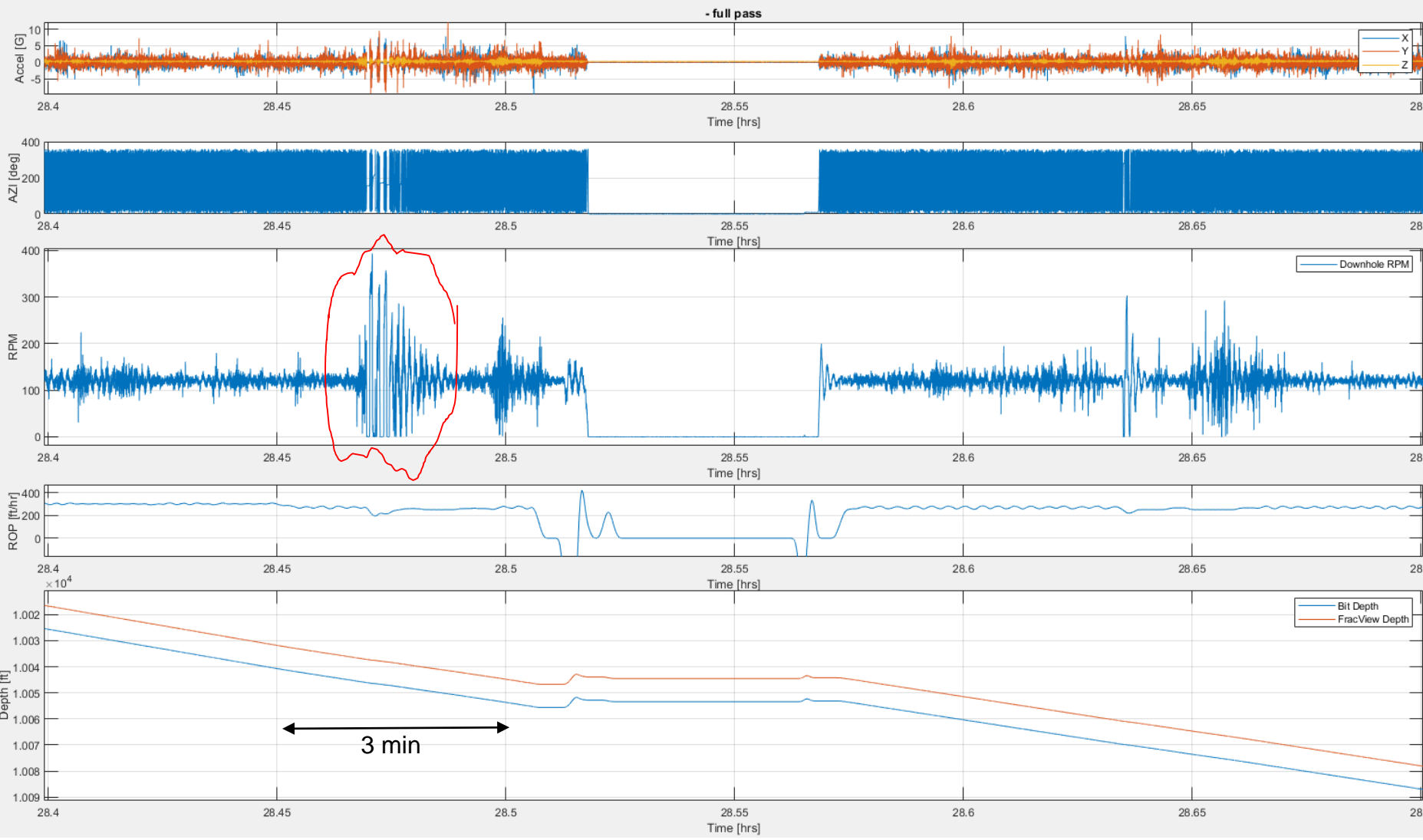


# NE\_Bogges\_17H– Job Summary. Section01. Pass01. Motion Dynamics.



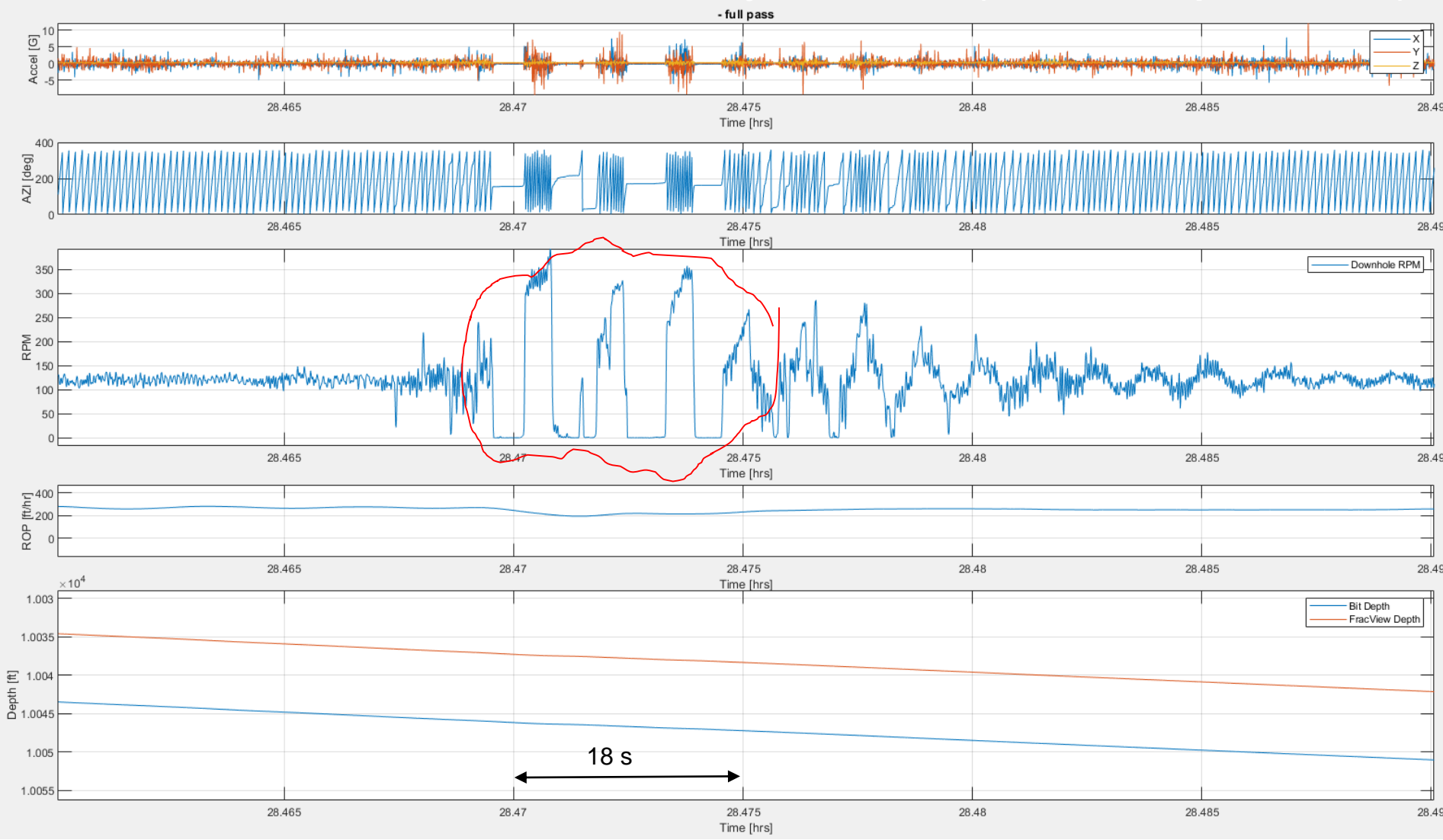


# NNE\_Bogges\_17H- Job Summary. Section01. Pass01. Motion Dynamics (zoom).

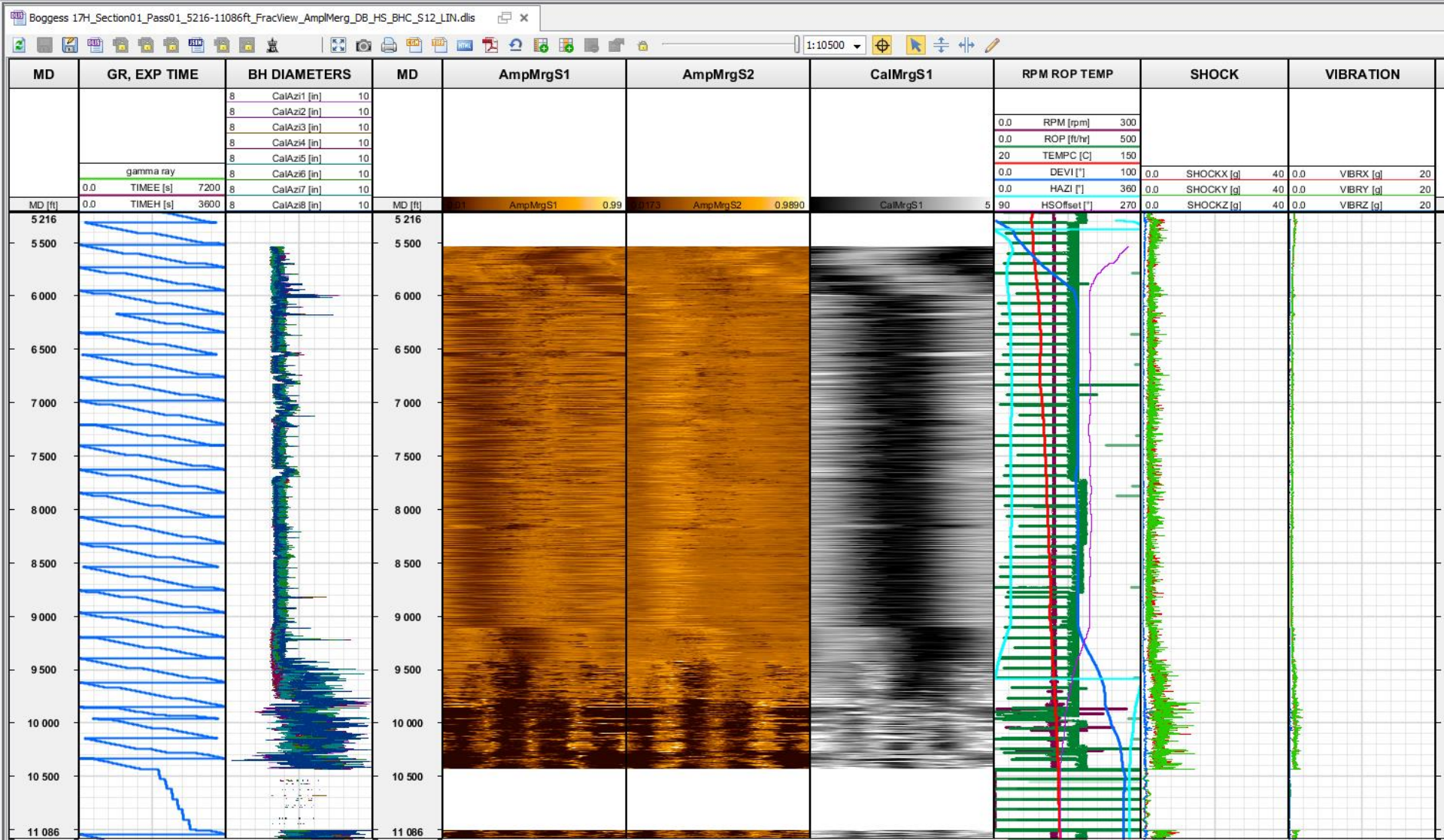


# NNE\_Bogges\_17H- Job Summary.

## Section01. Pass01. Motion Dynamics (Stick-Slip zoom)



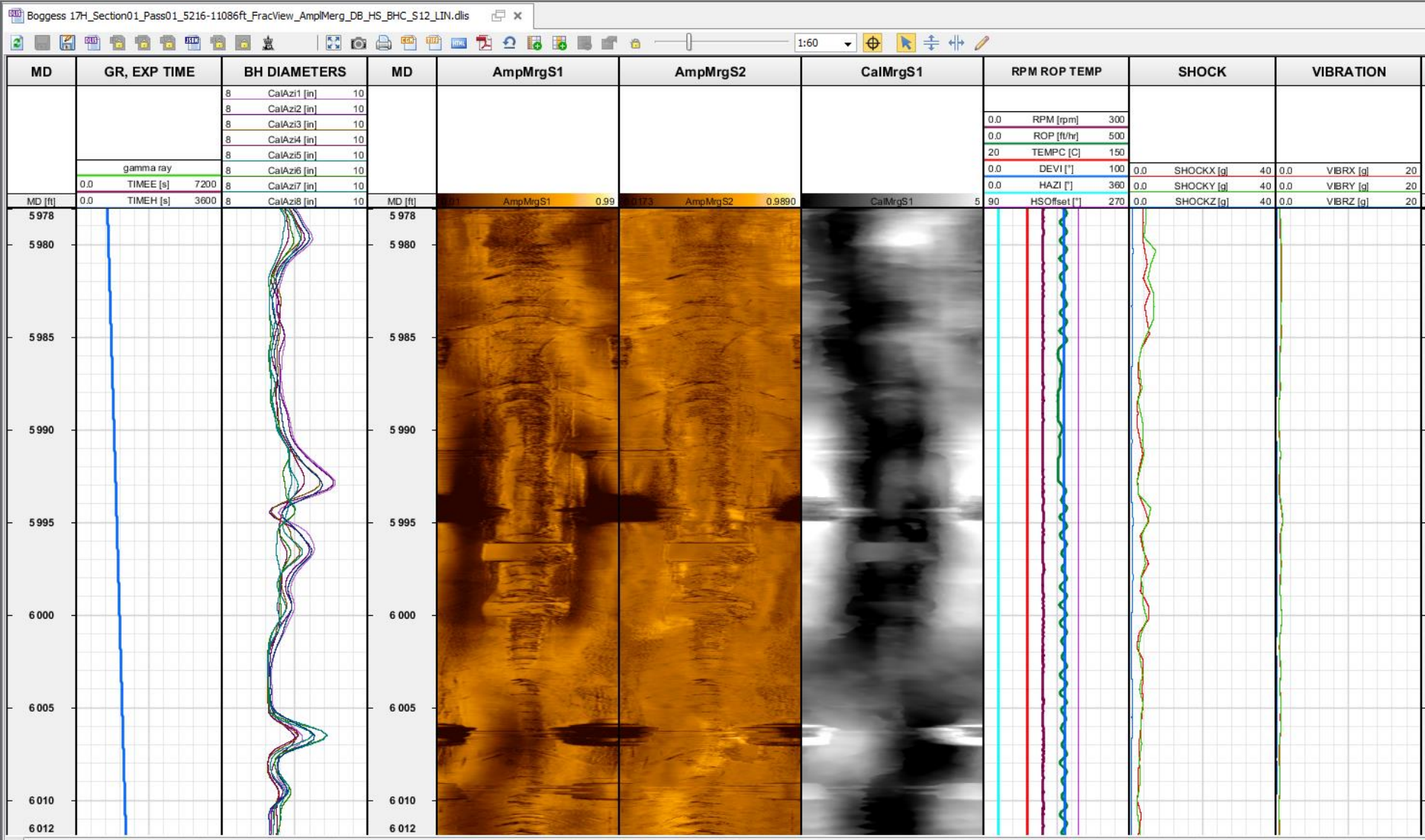
# NNE\_Bogges\_17H– Job Summary. Section01. Pass01. BHC HS S1 vs S2



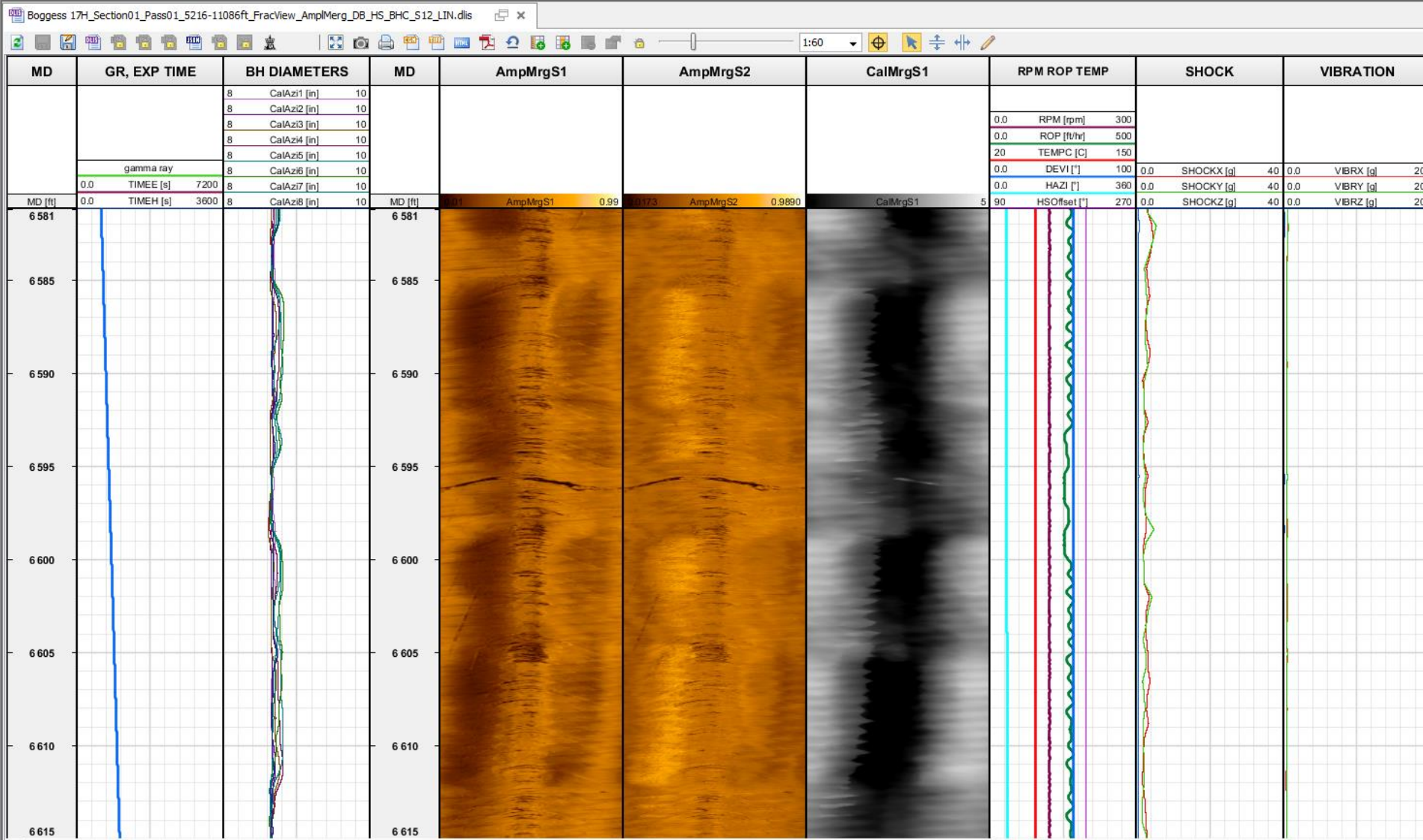


# NNE\_Bogges\_17H- Job Summary.

## Section01. Pass01. BHC HS S1 vs S2



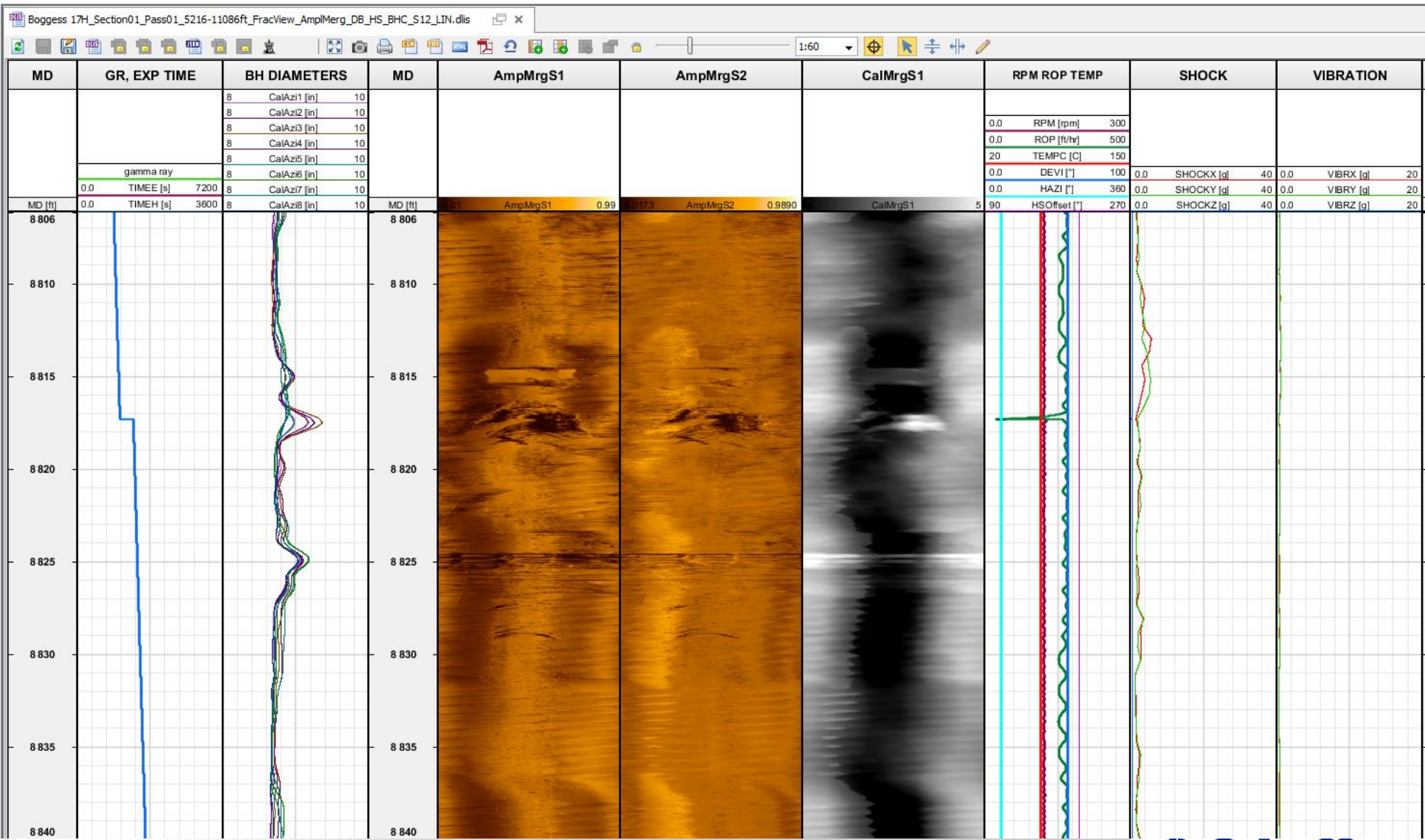
# NE\_Bogges\_17H- Job Summary. Section01. Pass01. BHC HS S1 vs S2



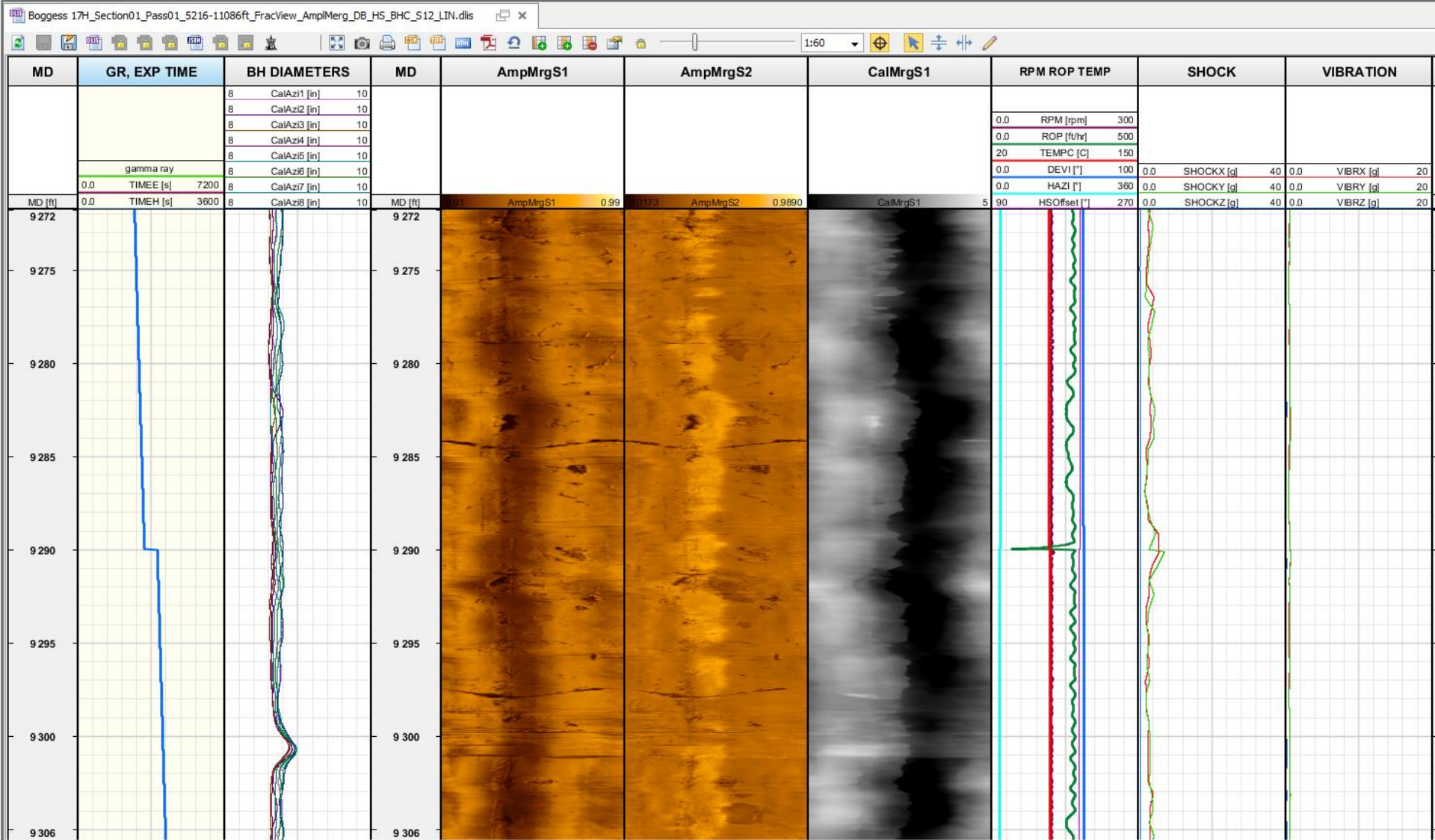


# NNE\_Bogges\_17H– Job Summary.

## Section01. Pass01. BHC HS S1 vs S2

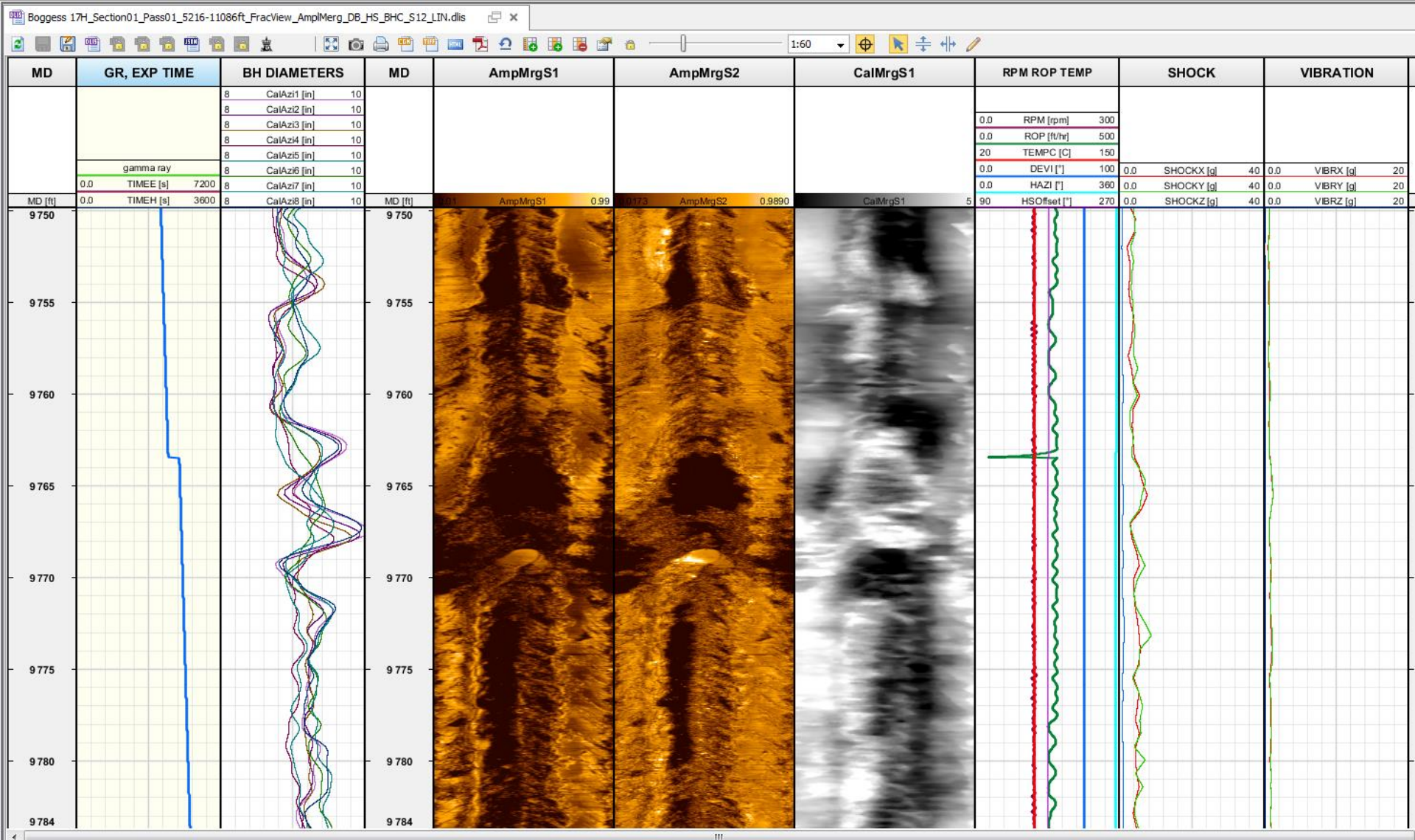


# NNE\_Boggess\_17H– Job Summary. Section01. Pass01. BHC HS S1 vs S2



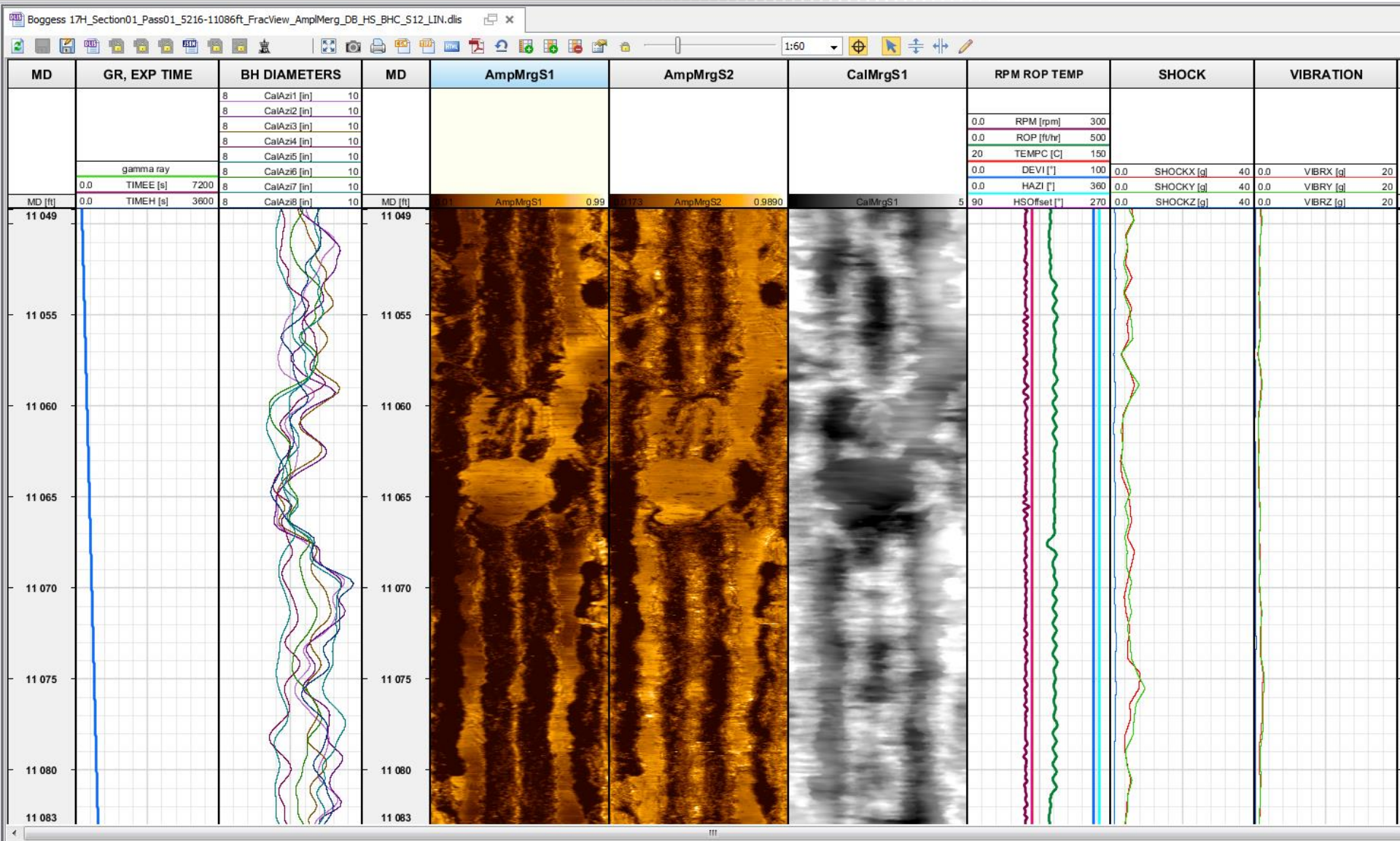


# NE\_Bogges\_17H- Job Summary. Section01. Pass01. BHC HS S1 vs S2





# NE\_Bogges\_17H- Job Summary. Section01. Pass01. BHC HS S1 vs S2





**Thank You**