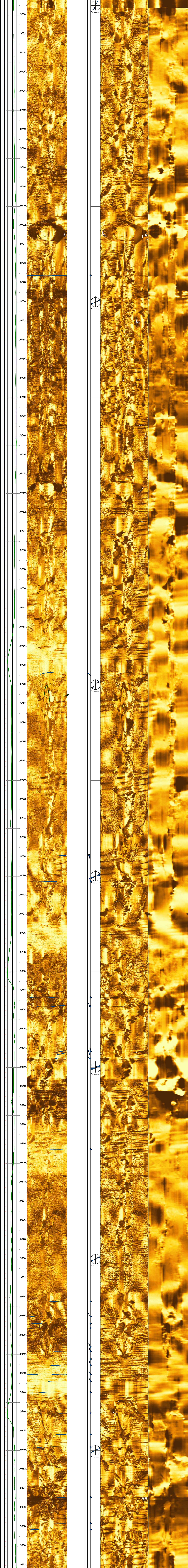
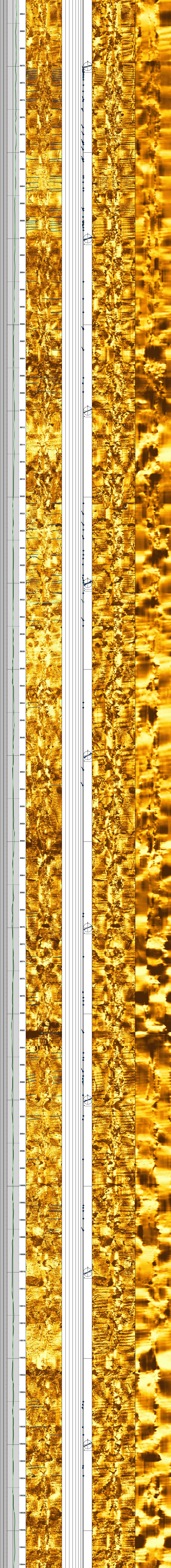


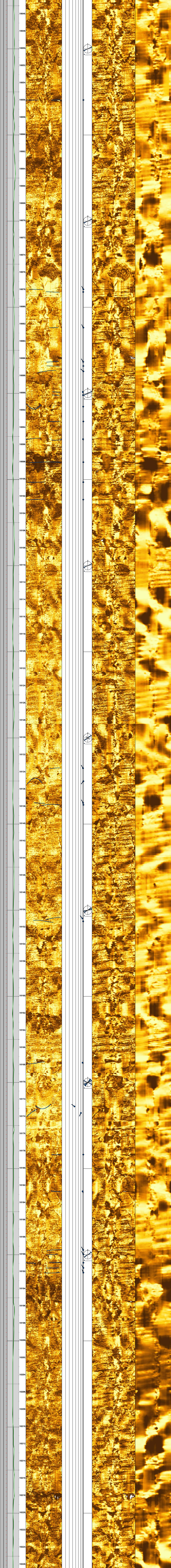
Country	USA	Well: Boggess-13H	Field Boggess-13H	Operator NorthEast Natural Energy
Operator	NNE			
Permanent Datum				
LOCATION		Country USA	Other Services:	
TD Driller - MD				

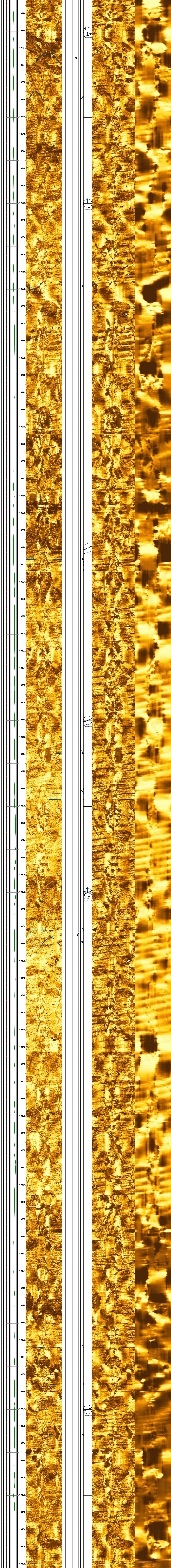
Country	USA
Operator	NNE
Permanent Datum	
TD Driller - MD	
Drilling Measured From:	ft
TD	
Top Log Int	5502.02 ft
Base Log Int	20327.7 ft
Top Pore Int	
Base Pore Int	
Bit Size	8.500 in
MUD VTI	16/g
RMI & Temp	ohmm
RMF & Temp	ohmm
RMC & Temp	ohmm
DLT Stale	100.00 us/f
RHOE Stale	2.40 g/cc
PHIN Stale	30.00 pu
GR Stale	GAPI
BHT	degF
BHMT Stability	ppm
Rv & Temp	ohmm
M and N	degF
Analysis Loc	2.00

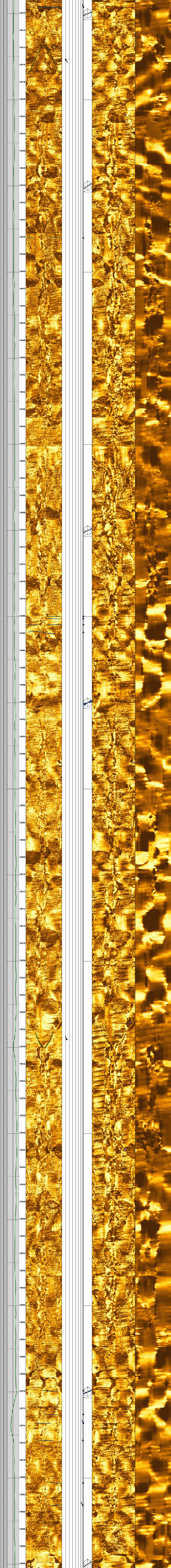
Country	USA
Operator	NNE
Permanent Datum	
TD Driller - MD	
Drilling Measured From:	ft
TD	
Top Log Int	5502.02 ft
Base Log Int	20327.7 ft
Top Pore Int	
Base Pore Int	
Bit Size	8.500 in
MUD VTI	16/g
RMI & Temp	ohmm
RMF & Temp	ohmm
RMC & Temp	ohmm
DLT Stale	100.00 us/f
RHOE Stale	2.40 g/cc
PHIN Stale	30.00 pu
GR Stale	GAPI
BHT	degF
BHMT Stability	ppm
Rv & Temp	ohmm
M and N	degF
Analysis Loc	2.00

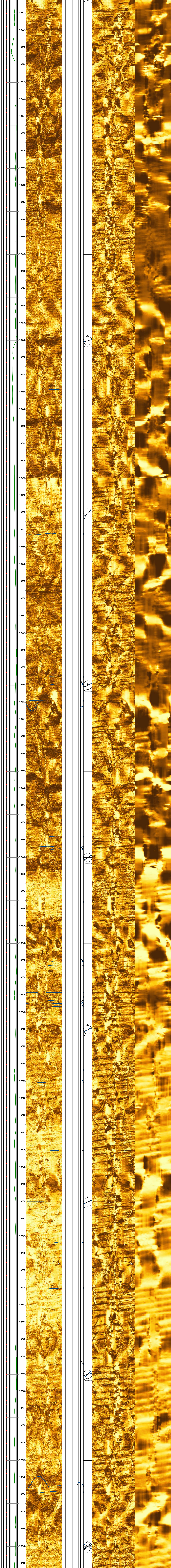


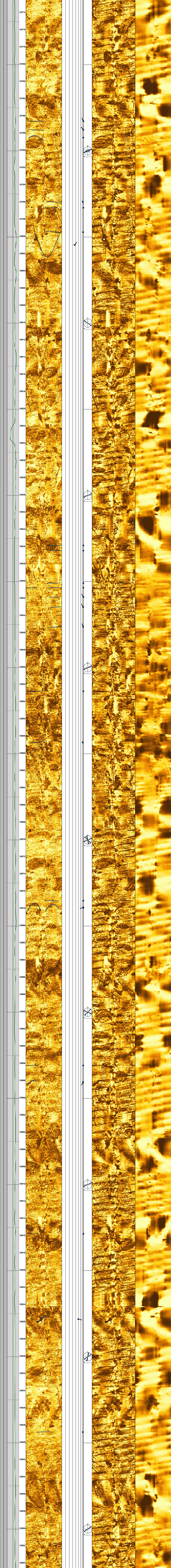


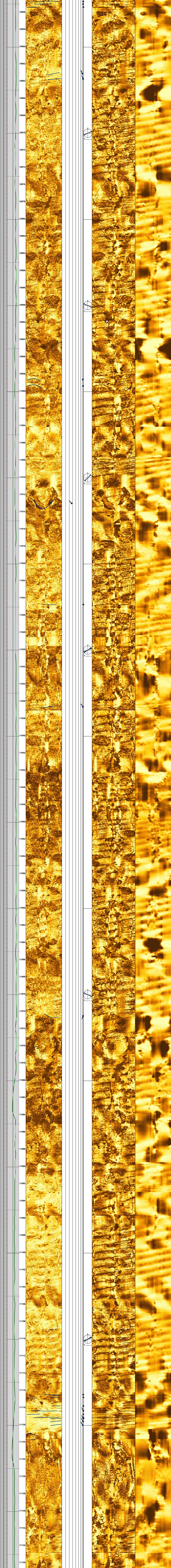




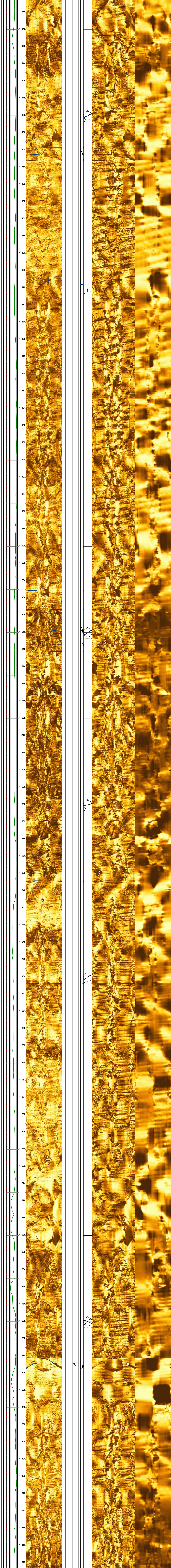


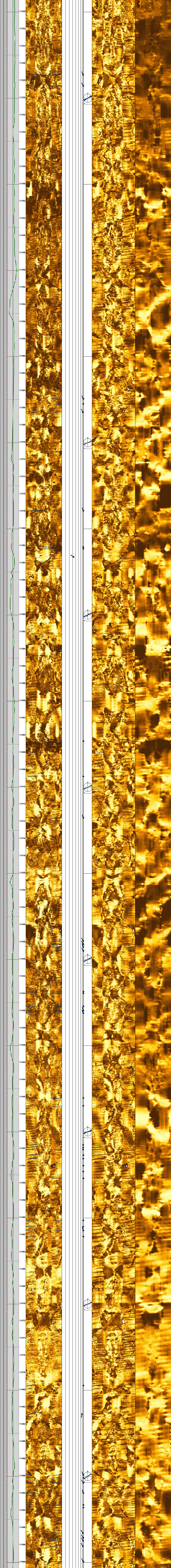


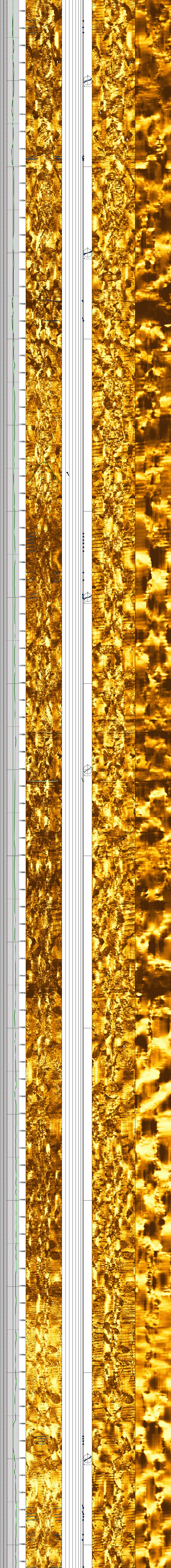


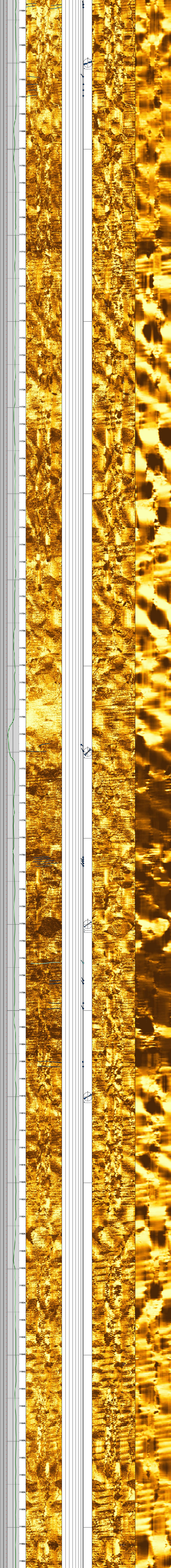


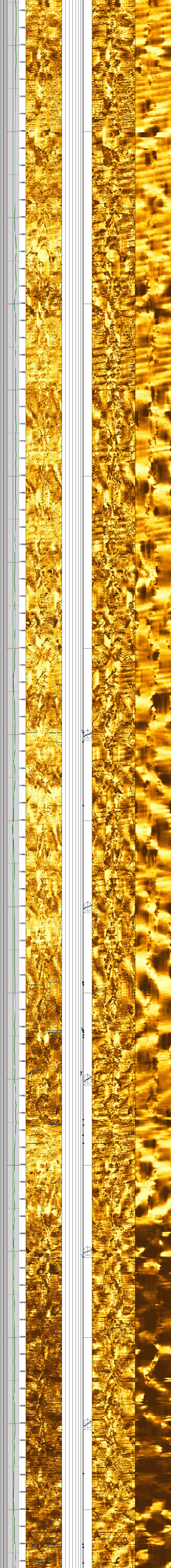


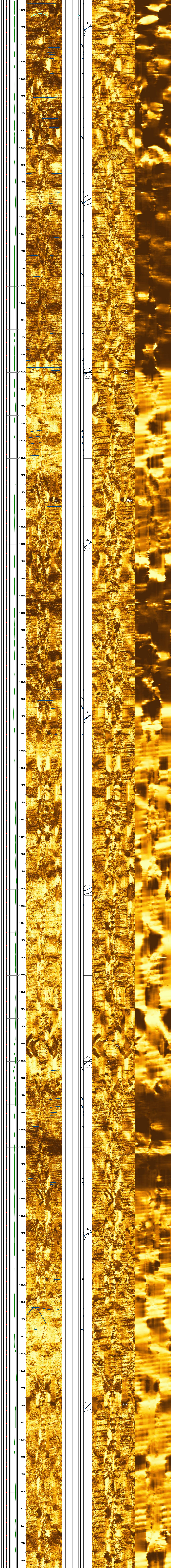


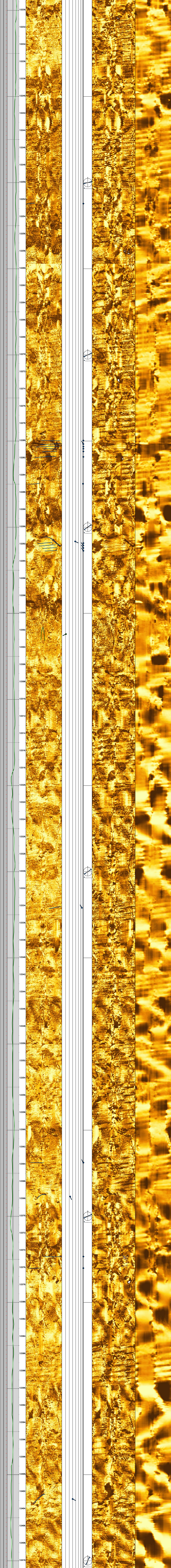


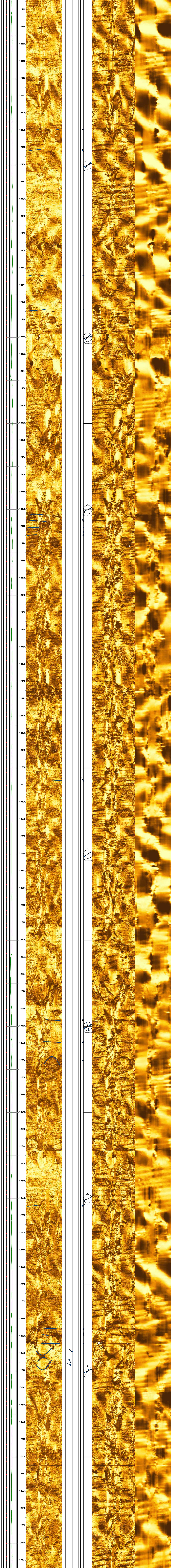




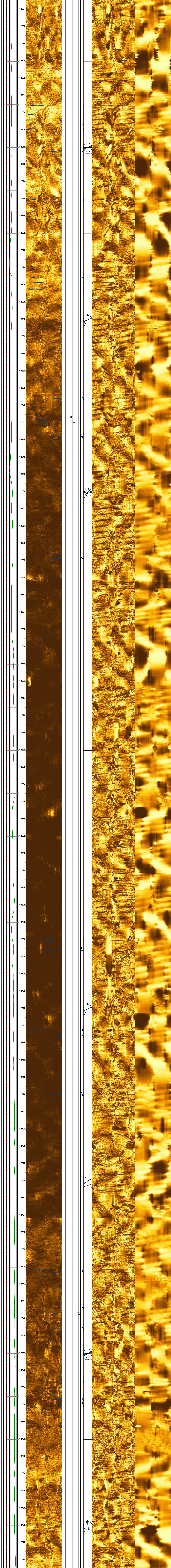












12594  
12596  
12598  
12600  
12602  
12604  
12606  
12608  
12610  
12612  
12614  
12616  
12618  
12620  
12622  
12624  
12626  
12628  
12630  
12632  
12634  
12636  
12638  
12640  
12642  
12644  
12646  
12648  
12650  
12652  
12654  
12656  
12658  
12660  
12662  
12664  
12666  
12668  
12670  
12672  
12674  
12676  
12678  
12680  
12682  
12684  
12686  
12688  
12690  
12692  
12694  
12696  
12698  
12700  
12702  
12704  
12706  
12708  
12710  
12712  
12714  
12716  
12718  
12720  
12722  
12724  
12726  
12728  
12730  
12732  
12734  
12736  
12738  
12740  
12742  
12744  
12746  
12748  
12750  
12752  
12754  
12756  
12758  
12760  
12762  
12764  
12766  
12768  
12770  
12772  
12774

